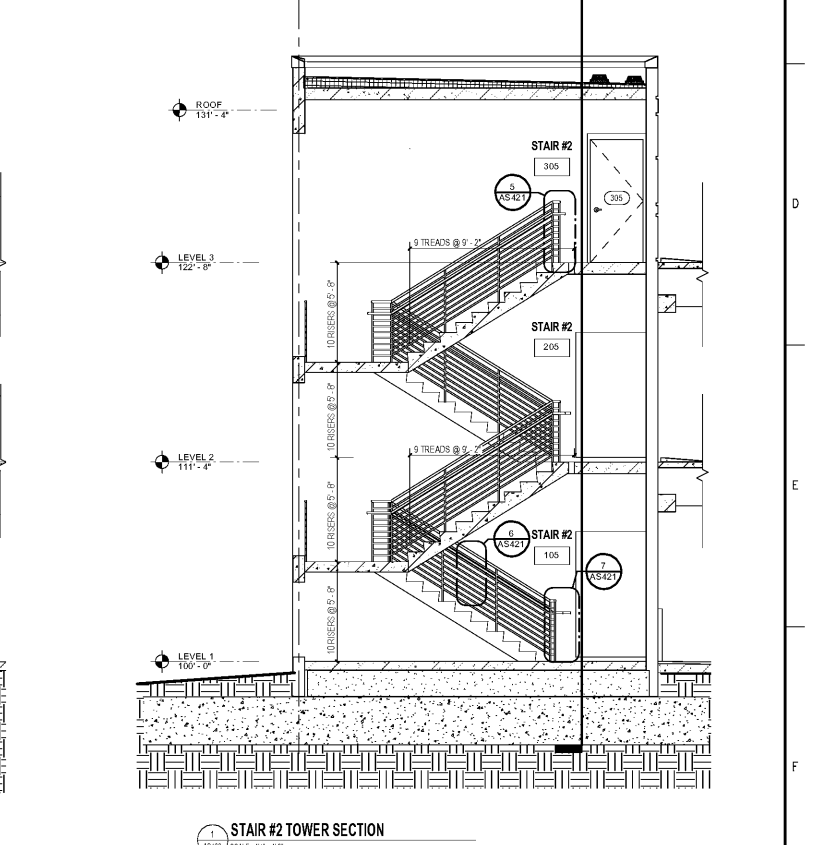
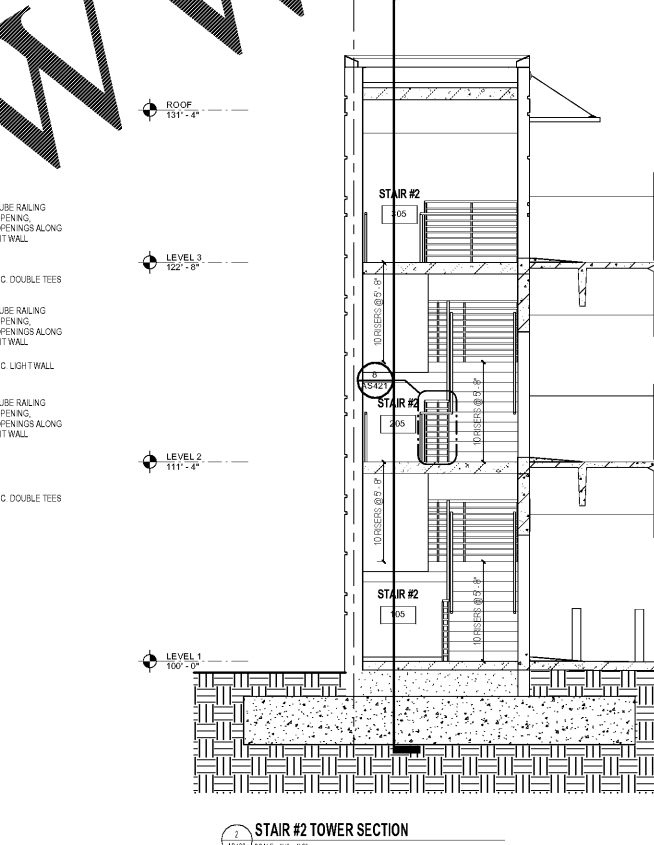
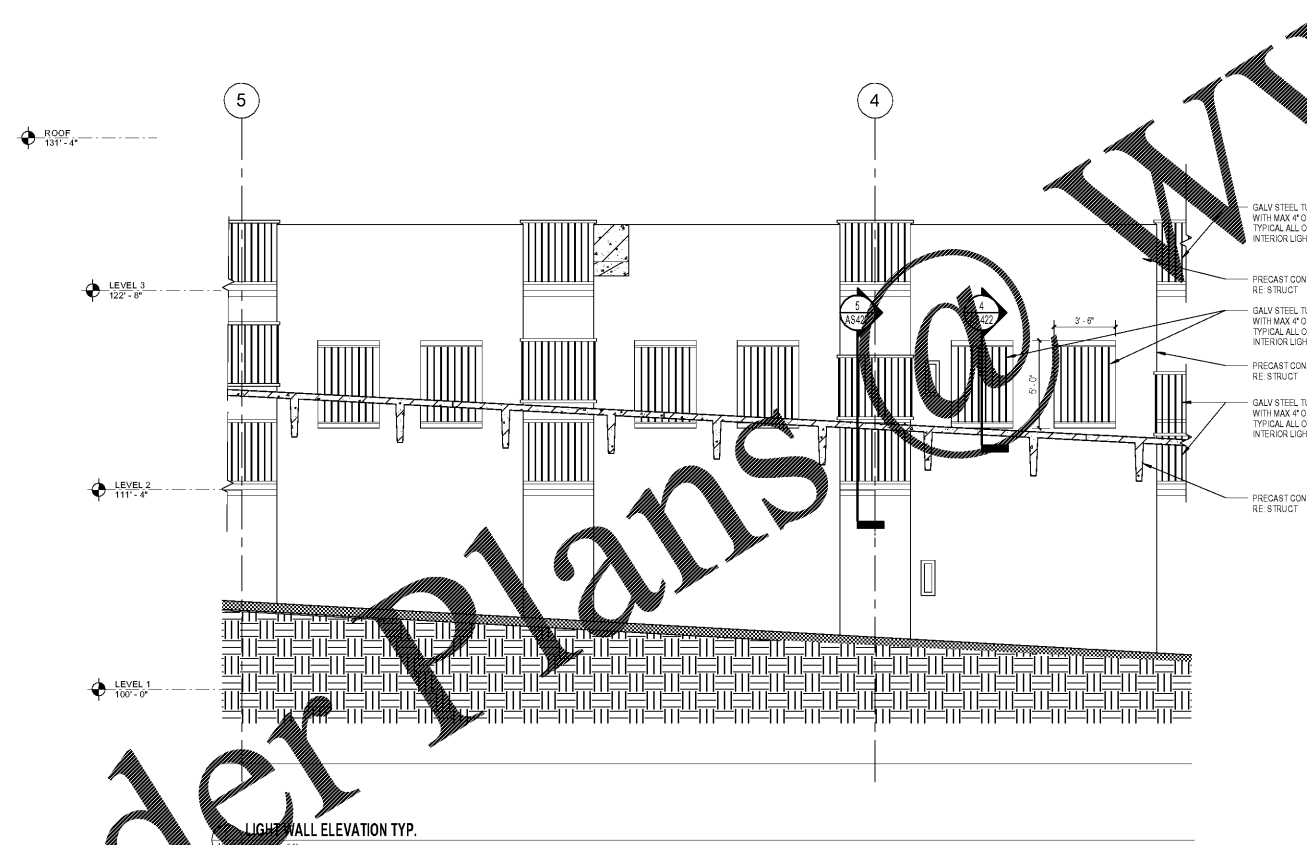
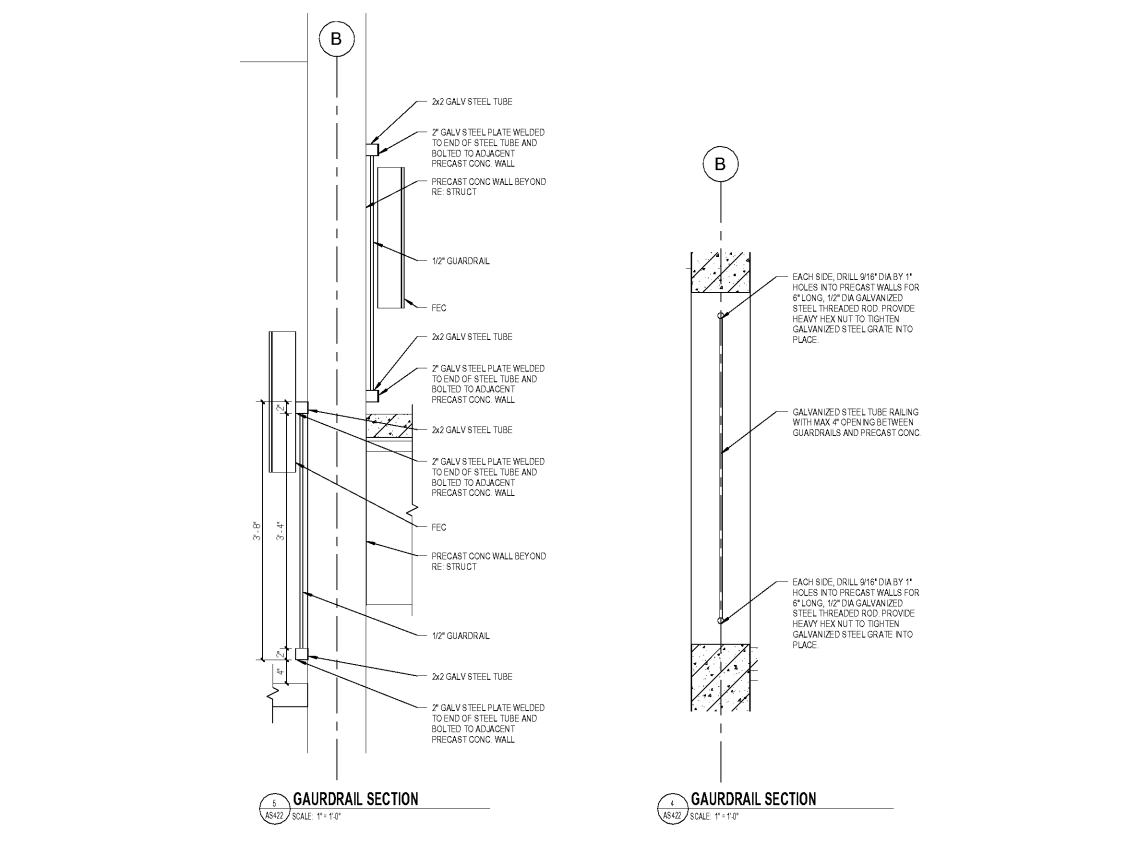


one eighth inch = one foot  
 one quarter inch = one foot  
 three eighths inch = one foot  
 one half inch = one foot  
 one and one half inches = one foot  
 three inches = one foot



WWW.LDILine.com

Order Plans @

Revisions:	Date

 <b>U.S. Department of Veterans Affairs</b> MEMPHIS VAMC 1030 JEFFERSON AVE, MEMPHIS, TN 38104	 ARCHITECT/ENGINEERS: <b>PROJECT LEAD</b> Architect, Structural Engineer, Civil Engineer <b>GUIDON DESIGN</b> <small>505 N. CAPITOL AVE. SUITE 100 INDIANAPOLIS, IN. 46204          317.860.6388 WWW.GUIDONDESIGN.COM          SUSTAINABLE ARCHITECTURE + ENGINEERING</small>	<b>MEP Engineer</b> APOGEE CONSULTING GROUP <small>1151 Kildaire Farm Rd. Suite 120 Cary, NC 27511          Tele: 919-858-7420</small>	<b>Functional Design</b> CARL WALKER INC. <small>3211 Internet Blvd., Suite 220 Frisco, TX 75034          Tele: 469-777-5143</small>	Drawing Title <b>STAIR SECTIONS</b>		Project Title <b>CONSTRUCT PARKING GARAGE ON WEST LOT</b>		Project Number <b>15.1067</b>		<b>OFFICE OF FACILITIES MANAGEMENT</b> VA Project Number <b>614-319</b>
				Approved for Design Concept: <b>FACILITY MANAGEMENT DIVISION MANAGER</b>		Location <b>MEMPHIS, TN</b>		Building Number <b>AS422</b>		
Date <b>11/14/2016</b>				Checked By: <b>UJ</b>		Drawn By: <b>KH</b>		BID SET		