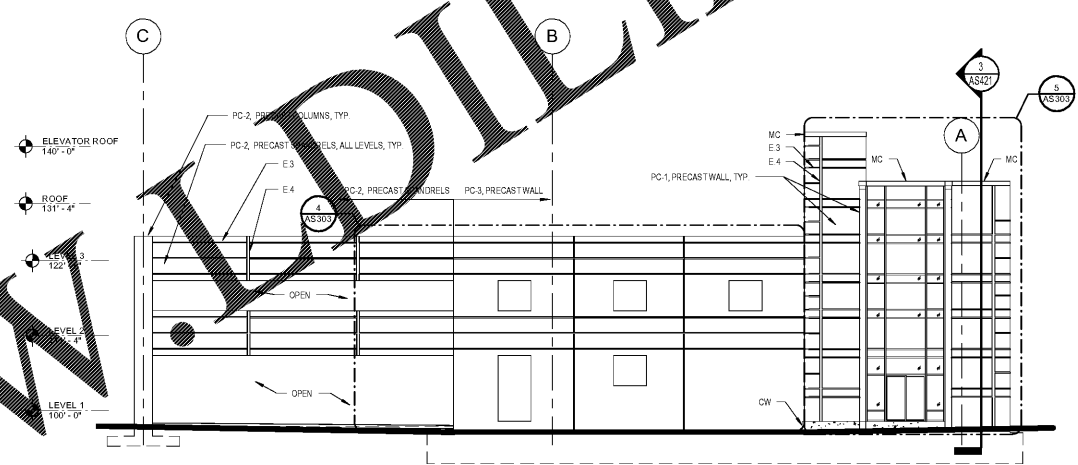
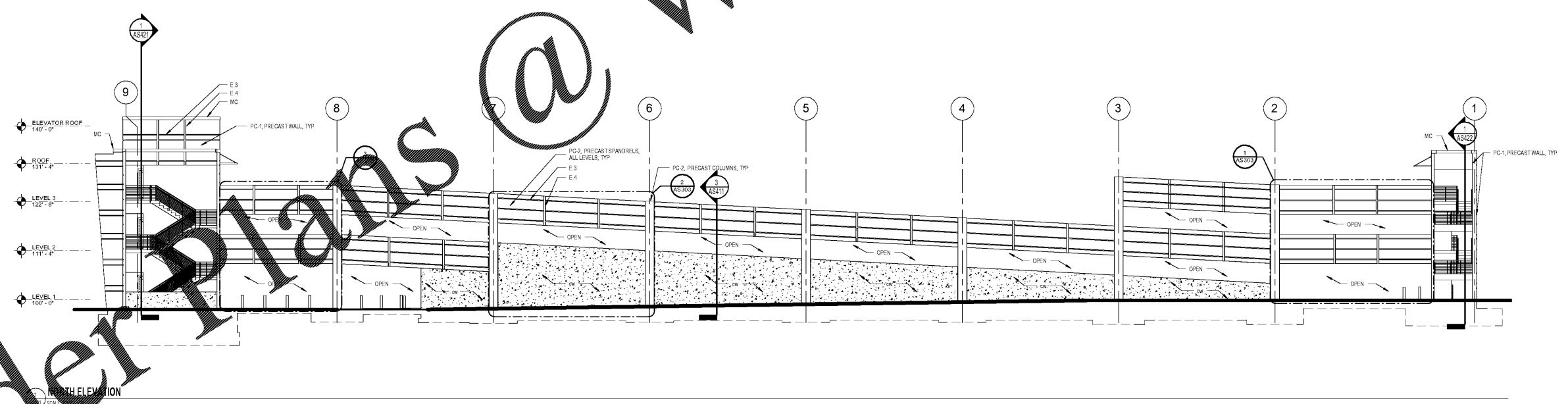


3D NORTHEAST ISOMETRIC
AS301 SCALE



EAST ELEVATION
AS301 SCALE 3/8"=1'-0"



NORTH ELEVATION
AS301 SCALE

SPECIFIC ELEVATION NOTES	
NOTE	DESCRIPTION
E.1	REFER TO CIVL DRAWINGS FOR FINAL SLOPE OF GRADE
E.2	BOLLARDS, RE: SHEET AP101 FOR MORE INFORMATION
E.3	1-1/2 PRECAST CONCRETE REVEAL TYP, REF DETAIL BA8311
E.4	5-1/2 PRECAST CONCRETE REVEAL TYP, REF DETAIL 7A8311

EXTERIOR FINISH LEGEND	
CODE	DESCRIPTION
AC	ALUMINUM CURTAIN WALL / STOREFRONT, RE: AS912
CW	POURED IN PLACE CONCRETE RETAINING WALL, SMOOTH FORM FINISH
MC	METAL COPING, COLOR TO MATCH PC-1

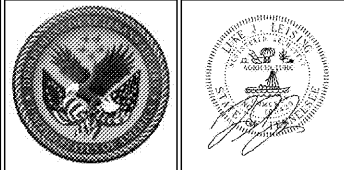
EXTERIOR FINISH LEGEND	
CODE	DESCRIPTION
NOTE: ALL FINISHES TO BE PC-1 UNLESS NOTED OTHERWISE	
PC-1	PRECAST CONCRETE - STAIN COLOR WHITE RE: SCHEDULE FOR FINISHES SPEC SECTION
PC-2	PRECAST CONCRETE - STAIN COLOR LIGHT BEIGE RE: SCHEDULE FOR FINISHES SPEC SECTION
PC-3	PRECAST CONCRETE - STAIN COLOR BLUE RE: SCHEDULE FOR FINISHES SPEC SECTION

GLAZING GENERAL NOTES	
ALL GLAZING IS TYPE "G" UNLESS NOTED BELOW	
1	TEMPER ALL GLAZING WITHIN 60 INCHES OF FINISH FLOOR AND WITHIN 24 INCHES HORIZONTALLY OF DOOR
2	TEMPER ALL GLAZING THAT OCCURS ADJACENT TO STAIRWAYS, LANDINGS, AND CORRIDORS WITHIN 36 INCHES HORIZONTALLY OF A WALKING SURFACE. WHEN EDGE OF THE GLASS IS LESS THAN 60 INCHES ABOVE THE PLANE OF THE ADJACENT WALKING SURFACE
3	TEMPER ALL GLAZING THAT OCCURS ADJACENT TO STAIRWAYS WITHIN 36 INCHES HORIZONTALLY OF THE BOTTOM TREAD OF A STAIR. WHEN AN OVERHANG WHEN THE EXPOSED SURFACE OF THE GLASS IS LESS THAN 60 INCHES ABOVE THE NOSE OF THE TREAD
4	TEMPER ALL GLAZING WITH AN AREA GREATER THAN 100 SQ FT
5	TEMPER PANE IF THE AREA IS GREATER THAN 100 SQ FT
6	"G" SYMBOL INDICATES SINGLE PANE

one eighth inch = one foot
 one quarter inch = one foot
 one half inch = one foot
 three eighths inch = one foot
 one inch = one foot
 one and one half inches = one foot
 two inches = one foot
 three inches = one foot
 four inches = one foot
 five inches = one foot
 six inches = one foot
 seven inches = one foot
 eight inches = one foot
 nine inches = one foot
 ten inches = one foot
 eleven inches = one foot
 twelve inches = one foot

Order Plans @ www.IDLine.com

Revisions:	Date



ARCHITECT/ENGINEERS:
PROJECT LEAD
 Architect, Structural Engineer, Civil Engineer
GUIDON DESIGN
 905 N. CAPITOL AVE. SUITE 100 INDIANAPOLIS, IN 46204
 317.860.6388 WWW.GUIDONDESIGN.COM
 SUSTAINABLE ARCHITECTURE + ENGINEERING

MEP Engineer
 APOGEE CONSULTING GROUP
 1151 Kildaire Farm Rd. Suite 120 Cary, NC 27511
 Tele: 919-858-7420

Functional Design
 CARL WALKER INC.
 3211 Internet Blvd., Suite 220 Frisco, TX 75034
 Tele: 469-777-5143

BID SET			
Drawing Title BUILDING ELEVATIONS	Project Title CONSTRUCT PARKING GARAGE ON WEST LOT	Project Number 15.1067	OFFICE OF FACILITIES MANAGEMENT
Approved for Design Concept: FACILITY MANAGEMENT DIVISION MANAGER	Location MEMPHIS, TN	Building Number	Drawing Number AS301
Date 11/14/2016	Checked By: UJ	Drawn By: KH	VA Project Number 614-319
			VA U.S. Department of Veterans Affairs