

PROJECT GENERAL NOTES

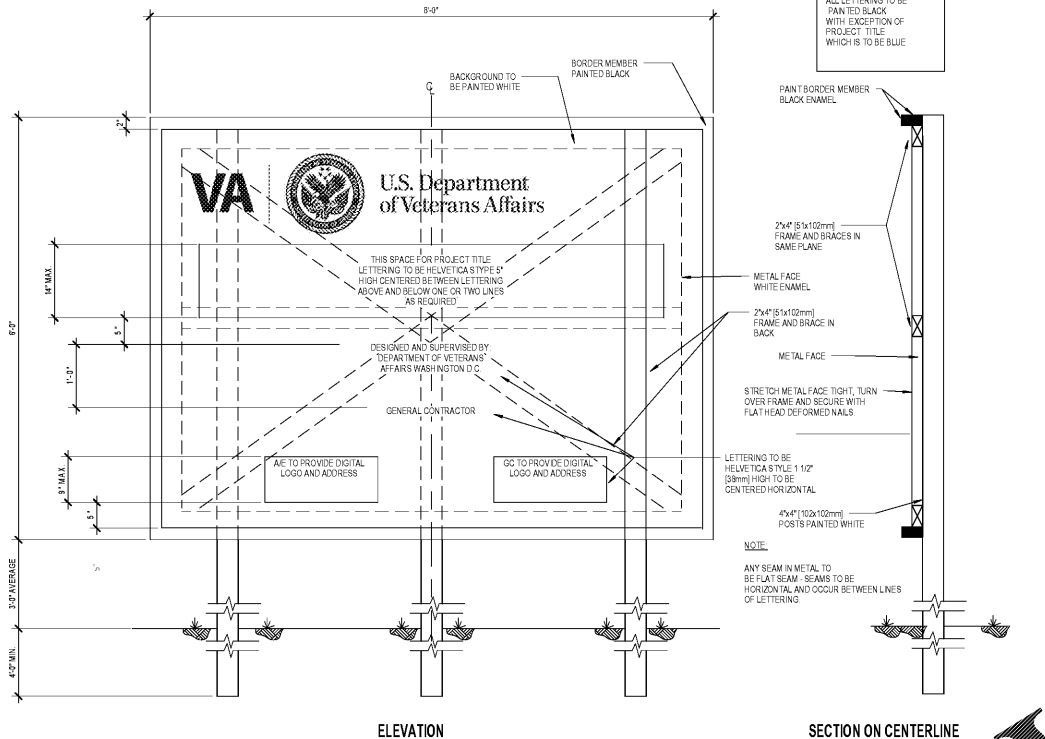
- 1. ATTENTION ALL USERS OF THESE DRAWINGS... 2. DO NOT PRESUME THAT YOUR SCOPE OF WORK IS SINGULARLY DEFINED... 3. EVERY EFFORT HAS BEEN MADE TO MAKE THESE DOCUMENTS CONCRETE AND COORDINATED... 4. MECHANICAL AND ELECTRICAL DRAWINGS SHOW INFORMATION IN A DIAGRAMMATIC FASHION WITHOUT DIMENSIONS... 5. THE CONTRACTOR SHALL VISIT THE SITE AND BECOME FAMILIAR WITH SITE CONDITIONS... 6. THE CONTRACTOR SHALL PROVIDE ALL MATERIALS, EQUIPMENT, LABOR, AND SERVICES NECESSARY TO COMPLETE THE WORK... 7. ALL PERSONS DIRECTLY OR INDIRECTLY ASSOCIATED WITH THE PROJECT SHALL BE FAMILIAR WITH THE RULES AND REGULATIONS OF THE OCCUPATIONAL SAFETY AND HEALTH ACT... 8. ALL WORK PERFORMED SHALL BE IN ACCORDANCE WITH THE BUILDING CODES AS NOTED ON CODE SHEETS... 9. CONTRACTOR SHALL SUBMIT CONFIRMATION OF ORDERED MATERIALS OR ITEMS NECESSARY TO COMPLETE THE PROJECT WITH PROJECTED DELIVERY DATE GREATER THAN FOUR WEEKS... 10. ALL SUBCONTRACTORS SHALL SUBMIT SHOP DRAWINGS AS REQUIRED FOR APPROVAL PRIOR TO COMMENCING ANY WORK... 11. THE GENERAL CONTRACTOR SHALL BE RESPONSIBLE FOR THE COORDINATION OF ALL TRADES AND THE PREVENTION OF CONFLICT AMONG ALL TRADES... 12. THE GENERAL CONTRACTOR SHALL BE RESPONSIBLE FOR LOCATING AND PROTECTING ALL UTILITY LINES... 13. GENERAL CONTRACTOR SHALL BE RESPONSIBLE FOR CHECKING ALL FIELD CONDITIONS AND DIMENSIONS RELATIVE TO THIS PROJECT... 14. ALL PENETRATIONS AT SMOKE AND FIRE RATED WALLS, FLOORS, OR CEILINGS, SHALL BE PROTECTED, SEALED OR DAMPED USING ONLY U.L. AND/OR I.C.B.O. APPROVED METHODS, MATERIALS AND INSTALLATION... 15. CONTRACTOR SHALL TAKE CARE TO MAINTAIN EXISTING FIRE PROTECTION SYSTEMS... 16. CONTRACTOR SHALL BE RESPONSIBLE FOR ALL TEMPORARY BRACING AND SHORING REQUIRED DURING CONSTRUCTION... 17. ALL WORK AND MATERIAL SHALL BE IDENTIFIED AS NEW UNLESS SPECIFICALLY INDICATED AS EXISTING... 18. TYPICAL DETAILS ARE NECESSARILY REFERENCED ON OTHER DRAWINGS... 19. SAFETY AND SECURITY ARE THE CONTRACTOR'S RESPONSIBILITY... 20. THE CONTRACTOR SHALL BE RESPONSIBLE FOR THE PROTECTION OF ALL EXISTING UTILITIES AND STRUCTURES...

DRAWINGS AND DIMENSIONS

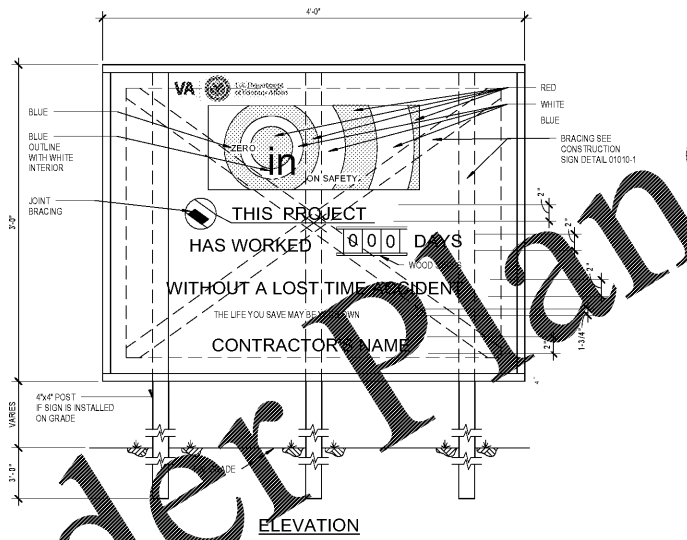
- 1. THE CONTRACT DOCUMENT DRAWINGS HAVE BEEN PREPARED USING REVIT/BIM SOFTWARE... 2. THESE DOCUMENTS WERE PRODUCED USING THE CONSTRUCTION SPECIFICATIONS INSTITUTES UNIFORM DRAWING SYSTEM AND THE NATIONAL CAD STANDARD AS GUIDES... 3. ANY INDICATION OF PROJECT LIMITS OR LINES OF DEMARCATION ARE SHOWN FOR THE CONVENIENCE OF THE CONTRACTOR... 4. DRAWINGS ARE PREPARED USING DIMENSIONS AND PRODUCT CONFIGURATIONS OR DETAILS OF SPECIFIC MANUFACTURERS... 5. THE DRAWINGS AND SPECIFICATIONS ARE SEPARATED INTO DISCIPLINES FOR CONVENIENCE... 6. THE DRAWINGS AND SPECIFICATIONS, INCLUDING DRAWINGS PREPARED BY SPECIFIC ENGINEERING DISCIPLINES... 7. USE OF THE WORD "VERIFY" IS OUT A SITUATION WHICH MUST BE CONFIRMED PRIOR TO PROCEEDING WITH THE WORK... 8. THE GENERAL CONTRACTOR SHALL BE RESPONSIBLE FOR NOTIFYING ARCHITECT IMMEDIATELY SHOULD ANY DISCREPANCIES BE FOUND... 9. THE GENERAL CONTRACTOR IS RESPONSIBLE FOR CHECKING ALL FIELD CONDITIONS AND DIMENSIONS RELATIVE TO THIS PROJECT... 10. DO NOT SCALE THE DRAWINGS... 11. ALL DIMENSIONS INDICATED ARE TO FACES OF CURVED SURFACES... 12. THE TERM "FINISH" REFERS TO LOCATING OFFERS... 13. IF ANY CONDITIONS ARE MISSING OR CONFLICTING, NOTIFY ARCHITECT PRIOR TO PROCEEDING WITH RELATED WORK...

ARCHITECTURAL ABBREVIATIONS

Table with 3 columns: Abbreviation, Description, Abbreviation, Description. Includes terms like AC (AIR CONDITIONING), AD (ACCUOUS), ADA (AMERICANS WITH DISABILITIES ACT), etc.

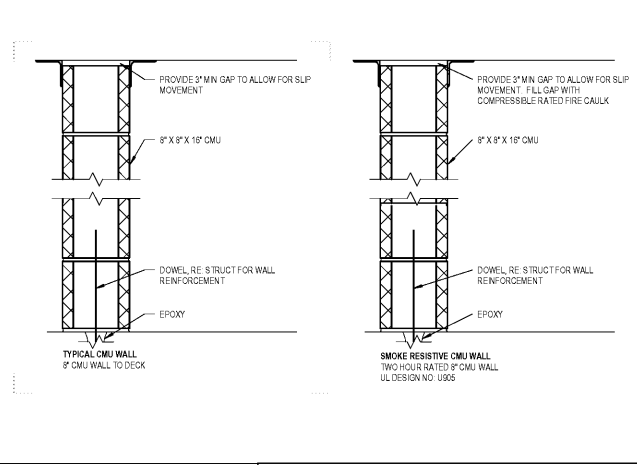


CONSTRUCTION SIGN SCALE 1/4"=1'-0"

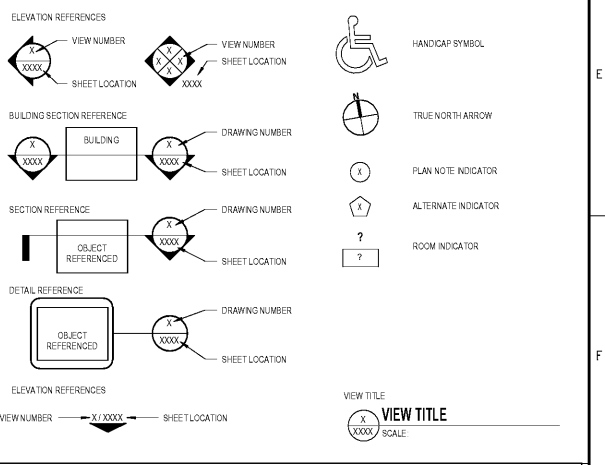


SAFETY SIGN SCALE 1/4"=1'-0"

3/AS01 - WALL TYPE LEGEND



ARCHITECTURAL SYMBOLS



BID SET

Table with 4 columns: Drawing Title, Project Title, Project Number, Office of Facilities Management. Includes details for 'ARCHITECTURAL SYMBOLS AND ABBREVIATIONS', 'CONSTRUCT PARKING GARAGE ON WEST LOT', '15.1067', and 'OFFICE OF FACILITIES MANAGEMENT'.

ARCHITECT/ENGINEERS: PROJECT LEAD Architect, Structural Engineer, Civil Engineer GUIDON DESIGN. Includes contact information for Memphis, TN and Cary, NC.

MEP Engineer APOGEE CONSULTING GROUP. Functional Design CARL WALKER INC. Includes contact information for Cary, NC and Frisco, TX.

Approved for Design Concept: FACILITY MANAGEMENT DIVISION MANAGER. Includes date 11/14/2016 and initials UJ, KH.

Revisions table with columns for Revision Number, Description, and Date.

U.S. Department of Veterans Affairs logo and address: MEMPHIS VAMC, 1030 JEFFERSON AVE, MEMPHIS, TN 38104.

Professional seals and signatures for the project lead and other team members.

Vertical text on the left margin: 'three eighths inch = one foot', 'one and one half inches = one foot', 'one inch = one foot', 'one quarter inch = one foot', 'one eighth inch = one foot'.