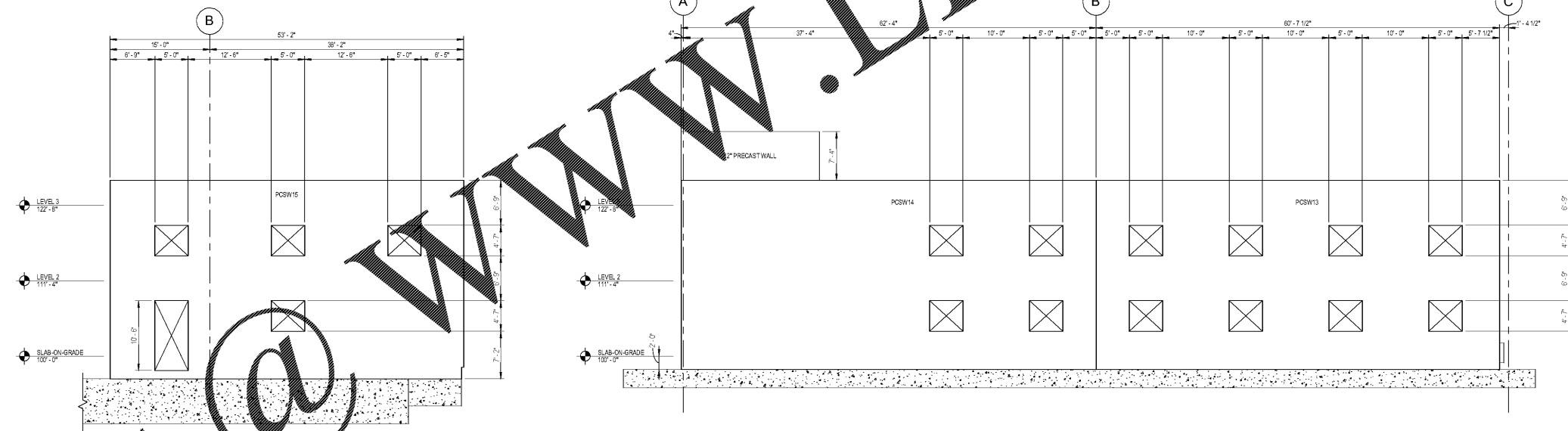
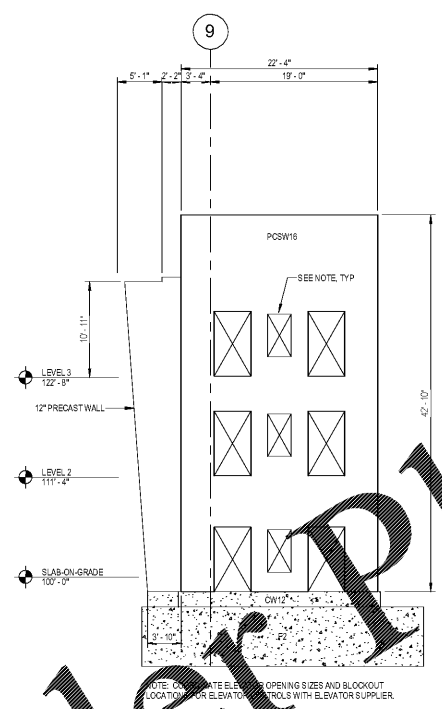


1 INTERIOR SHEARWALL ELEVATION @ GRID B
SCALE: 1/8" = 1'-0"



2 EXTERIOR SHEARWALL ELEVATION @ GRID 1
SCALE: 1/8" = 1'-0"

3 EXTERIOR SHEARWALL ELEVATION @ GRID 1
SCALE: 1/8" = 1'-0"



4 STAIR PRECAST ELEVATION
SCALE: 1/8" = 1'-0"

SHEARWALL LATERAL FORCE DISTRIBUTION

| WALL | LEVEL 3 | | LEVEL 2 | | SLAB-ON-GRADE | |
|--------|---------|--------|---------|--------|---------------|--------|
| | DEAD | LIVE | DEAD | LIVE | DEAD | LIVE |
| PCSW01 | 190 | 123.67 | 190 | 122.67 | 190 | 122.67 |
| PCSW02 | 190 | 123.67 | 190 | 122.67 | 190 | 122.67 |
| PCSW03 | 190 | 123.67 | 190 | 122.67 | 190 | 122.67 |
| PCSW04 | 190 | 123.67 | 190 | 122.67 | 190 | 122.67 |
| PCSW05 | 190 | 123.67 | 190 | 122.67 | 190 | 122.67 |
| PCSW06 | 190 | 123.67 | 190 | 122.67 | 190 | 122.67 |
| PCSW07 | 190 | 123.67 | 190 | 122.67 | 190 | 122.67 |
| PCSW08 | 190 | 123.67 | 190 | 122.67 | 190 | 122.67 |
| PCSW09 | 190 | 123.67 | 190 | 122.67 | 190 | 122.67 |
| PCSW10 | 190 | 123.67 | 190 | 122.67 | 190 | 122.67 |
| PCSW11 | 190 | 123.67 | 190 | 122.67 | 190 | 122.67 |
| PCSW12 | 190 | 123.67 | 190 | 122.67 | 190 | 122.67 |
| PCSW13 | 190 | 123.67 | 190 | 122.67 | 190 | 122.67 |
| PCSW14 | 190 | 123.67 | 190 | 122.67 | 190 | 122.67 |
| PCSW15 | 190 | 123.67 | 190 | 122.67 | 190 | 122.67 |
| PCSW16 | 190 | 123.67 | 190 | 122.67 | 190 | 122.67 |

SHEARWALL SCHEDULE

| WALL | THICKNESS | LENGTH | DESIGN REACTIONS | | | TOTAL LOAD (K/PSF) | REMARKS |
|--------|-----------|------------|-------------------|-------------------|-----------|--------------------|---------|
| | | | DEAD LOAD (K/PSF) | LIVE LOAD (K/PSF) | SNOW LOAD | | |
| PCSW01 | 10" | 14'-0" | 35 | 12 | 3 | 50 | |
| PCSW02 | 10" | 14'-0" | 35 | 12 | 3 | 50 | |
| PCSW03 | 10" | 14'-0" | 35 | 12 | 3 | 50 | |
| PCSW04 | 10" | 14'-0" | 35 | 12 | 3 | 50 | |
| PCSW05 | 10" | 14'-0" | 35 | 12 | 3 | 50 | |
| PCSW06 | 10" | 14'-0" | 35 | 12 | 3 | 50 | |
| PCSW07 | 10" | 14'-0" | 35 | 12 | 3 | 50 | |
| PCSW08 | 10" | 14'-0" | 35 | 12 | 3 | 50 | |
| PCSW09 | 10" | 14'-0" | 35 | 12 | 3 | 50 | |
| PCSW10 | 10" | 14'-0" | 35 | 12 | 3 | 50 | |
| PCSW11 | 10" | 14'-0" | 35 | 12 | 3 | 50 | |
| PCSW12 | 10" | 14'-0" | 35 | 12 | 3 | 50 | |
| PCSW13 | 1'-0" | 67'-7 1/2" | 45 | 14 | 6 | 65 | |
| PCSW14 | 1'-0" | 62'-4" | 45 | 14 | 6 | 65 | |
| PCSW15 | 1'-0" | 53'-0" | 45 | 14 | 6 | 65 | |
| PCSW16 | 8" | 22'-4" | 18 | 4 | 1 | 23 | |

NOTE: REFER TO ARCHITECTURAL DRAWINGS FOR REVEAL DIMENSIONS AND PANEL COLORS.

three eighths inch = one foot
 one and one half inches = one foot
 one inch = one foot
 three eighths inch = one foot
 one half inch = one foot
 one quarter inch = one foot
 one eighth inch = one foot

U.S. Department of Veterans Affairs
MEMPHIS VAMC
1030 JEFFERSON AVE, MEMPHIS, TN 38104

INDIANA
REGISTERED PROFESSIONAL ENGINEER
NO. 10809552

ARCHITECT/ENGINEERS:
PROJECT LEAD
Architect, Structural Engineer, Civil Engineer
GUIDON DESIGN
905 N. CAPITOL AVE. SUITE 100 INDIANAPOLIS, IN 46204
317.860.0386 WWW.GUIDONDESIGN.COM
SUSTAINABLE ARCHITECTURE + ENGINEERING

MEP Engineer
APOGEE CONSULTING GROUP
1151 Kildaire Farm Rd. Suite 120 Cary, NC 27511
Tele: 919-858-7420

Functional Design
CARL WALKER INC.
3211 Internet Blvd., Suite 220 Frisco, TX 75034
Tele: 469-777-5143

BID SET

| | | | |
|----------------------------------------------------------------------|-------------------------------------------------------|--------------------------------|-------------------------------------|
| Drawing Title SHEARWALL ELEVATIONS AND SCHEDULES | Project Title CONSTRUCT PARKING GARAGE ON WEST LOT | Project Number 15.1067 | OFFICE OF FACILITIES MANAGEMENT |
| Approved for Design Concept: FACILITY MANAGEMENT DIVISION MANAGER | Location MEMPHIS, TN | Drawing Number SF202 | VA Project Number 614-319 |
| Date 11/14/2016 | Checked By: MAV | Drawn By: WJT | U.S. Department of Veterans Affairs |