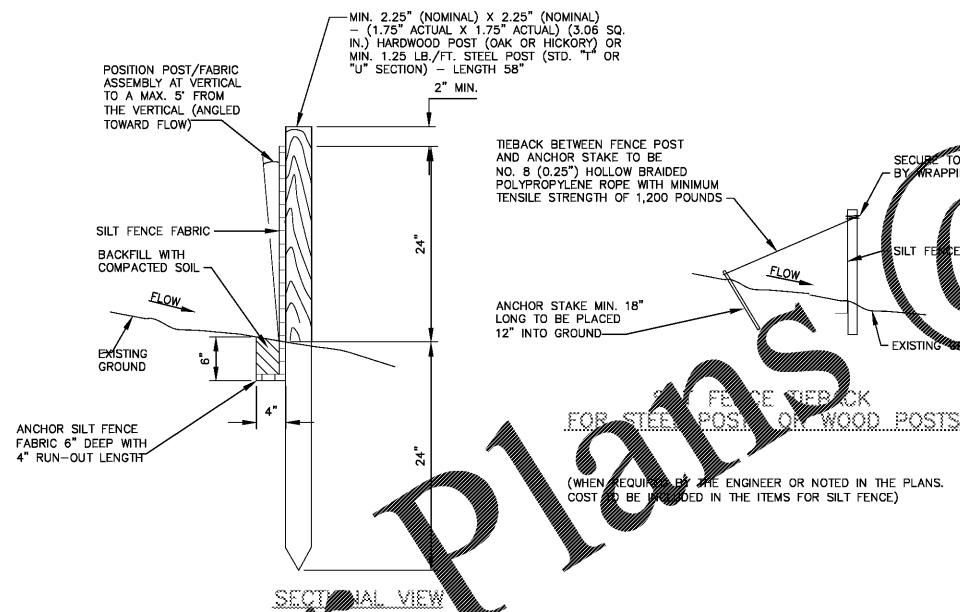


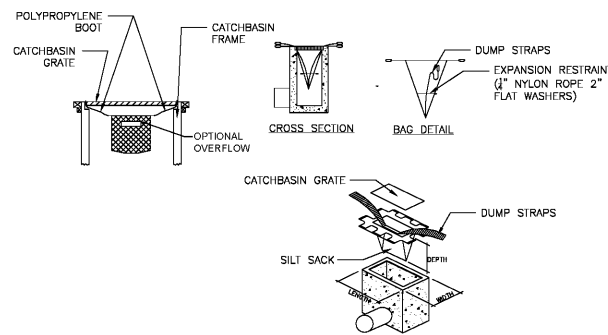
ELEVATION VIEW



SECTIONAL VIEW

TEMPORARY SILT BARRIER

NTS

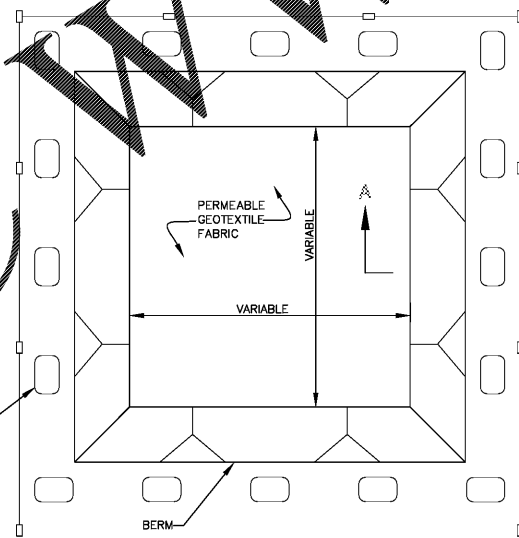


THIS METHOD OF INLET PROTECTION IS APPLICABLE WHERE THE INLET DRAINS SHEET, OVERLAND AND CONCENTRATED FLOWS (NOT GREATER THAN 1 CFS). THE METHOD CAN DRAIN FLAT AREA TO STEEP SLOPES. INLET CAPACITY WILL DECREASE WITH THIS METHOD AND CONTRACTOR SHALL EXPECT FLOODING TO OCCUR DURING HIGH FLOW EVENTS.

MAINTENANCE SHALL OCCUR WHEN NECESSARY. SILT SACKS SHALL BE CLEANED ONCE THE BAG IS FILLED HALF WAY WITH DEBRIS. CONTRACTOR SHALL REMOVE SILT SACK AND PLACE NEW UNIT. DO NOT EMPTY SILT SACK CONTENTS INTO THE CATCHBASIN.

INLET PROTECTION, TYPE 1

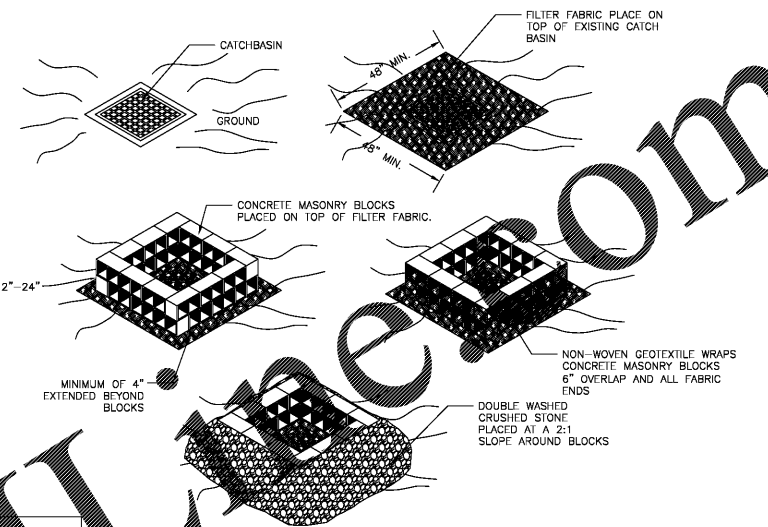
NTS



PLAN VIEW

NOT TO SCALE

TYPE "BELOW GRADE"

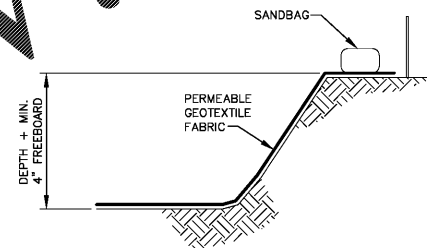


THIS METHOD OF INLET PROTECTION IS APPLICABLE WHERE HEAVY FLOWS ARE ANTICIPATED AND OVERFLOW CAPACITY IS NECESSARY TO PREVENT EXCESSIVE PONDING.

MAINTENANCE SHALL OCCUR WHEN NECESSARY. FILTER FABRIC SHALL BE SWEEPED CLEAN WHEN NEEDED AND GRAVEL SHALL BE REPLACED WHEN A NOTICEABLE AMOUNT OF FINES HAVE COLLECTED IN BETWEEN THE CRUSHED GRAVEL.

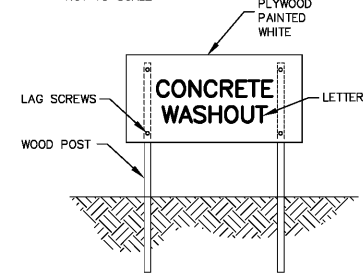
INLET PROTECTION, TYPE 2

NTS



SECTION A-A

NOT TO SCALE



CONCRETE WASHOUT SIGN (OR EQUIVALENT)

NOTES:

1. ACTUAL LAYOUT DETERMINED IN THE FIELD.
2. SIGNAGE IDENTIFYING THE CONCRETE WASHOUT AREA SHALL BE INSTALLED WITHIN 5 FT. OF THE WASHOUT FACILITY.

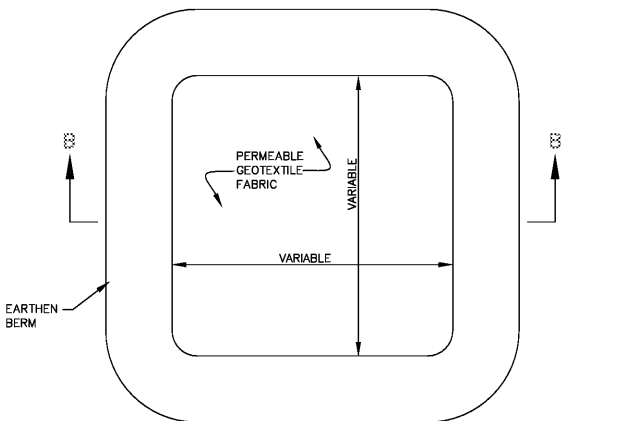
CONCRETE WASHOUT

NTS



SECTION B-B

NOT TO SCALE



PLAN VIEW

NOT TO SCALE

TYPE "ABOVE GRADE" WITH EARTHEN BERMS

BID SET			
Drawing Title EROSION CONTROL DETAILS	Project Title CONSTRUCT PARKING GARAGE ON WEST LOT	Project Number 15.1067	OFFICE OF FACILITIES MANAGEMENT
Approved for Design Concept: FACILITY MANAGEMENT DIVISION MANAGER	Location MEMPHIS, TN	Building Number	VA Project Number 614-319
Date 11/14/2016	Checked By KJC	Drawn By CMB	Drawing Number CJ501
ARCHITECT/ENGINEERS: PROJECT LEAD Architect, Structural Engineer, Civil Engineer GUIDON DESIGN 905 N. CAPITOL AVE. SUITE 100 INDIANAPOLIS, IN 46204 317.800.6388 WWW.GUIDONDESIGN.COM SUSTAINABLE ARCHITECTURE + ENGINEERING		MEP Engineer APOGEE CONSULTING GROUP 1151 Kildaire Farm Rd. Suite 120 Cary, NC 27511 Tele: 919-858-7420	Functional Design CARL WALKER INC. 3211 Internet Blvd., Suite 220 Frisco, TX 75034 Tele: 469-777-5143

one eighth inch = one foot
one quarter inch = one foot
one half inch = one foot
three eighths inch = one foot
one inch = one foot
one and one half inches = one foot
two inches = one foot
three inches = one foot
four inches = one foot
five inches = one foot
six inches = one foot
seven inches = one foot
eight inches = one foot
nine inches = one foot
ten inches = one foot
eleven inches = one foot
twelve inches = one foot
thirteen inches = one foot
fourteen inches = one foot
fifteen inches = one foot
sixteen inches = one foot
seventeen inches = one foot
eighteen inches = one foot
nineteen inches = one foot
twenty inches = one foot
twenty one inches = one foot
twenty two inches = one foot
twenty three inches = one foot
twenty four inches = one foot
twenty five inches = one foot
twenty six inches = one foot
twenty seven inches = one foot
twenty eight inches = one foot
twenty nine inches = one foot
thirty inches = one foot
thirty one inches = one foot
thirty two inches = one foot
thirty three inches = one foot
thirty four inches = one foot
thirty five inches = one foot
thirty six inches = one foot
thirty seven inches = one foot
thirty eight inches = one foot
thirty nine inches = one foot
forty inches = one foot
forty one inches = one foot
forty two inches = one foot
forty three inches = one foot
forty four inches = one foot
forty five inches = one foot
forty six inches = one foot
forty seven inches = one foot
forty eight inches = one foot
forty nine inches = one foot
fifty inches = one foot
fifty one inches = one foot
fifty two inches = one foot
fifty three inches = one foot
fifty four inches = one foot
fifty five inches = one foot
fifty six inches = one foot
fifty seven inches = one foot
fifty eight inches = one foot
fifty nine inches = one foot
sixty inches = one foot
sixty one inches = one foot
sixty two inches = one foot
sixty three inches = one foot
sixty four inches = one foot
sixty five inches = one foot
sixty six inches = one foot
sixty seven inches = one foot
sixty eight inches = one foot
sixty nine inches = one foot
seventy inches = one foot
seventy one inches = one foot
seventy two inches = one foot
seventy three inches = one foot
seventy four inches = one foot
seventy five inches = one foot
seventy six inches = one foot
seventy seven inches = one foot
seventy eight inches = one foot
seventy nine inches = one foot
eighty inches = one foot
eighty one inches = one foot
eighty two inches = one foot
eighty three inches = one foot
eighty four inches = one foot
eighty five inches = one foot
eighty six inches = one foot
eighty seven inches = one foot
eighty eight inches = one foot
eighty nine inches = one foot
ninety inches = one foot
ninety one inches = one foot
ninety two inches = one foot
ninety three inches = one foot
ninety four inches = one foot
ninety five inches = one foot
ninety six inches = one foot
ninety seven inches = one foot
ninety eight inches = one foot
ninety nine inches = one foot
one hundred inches = one foot

Order Plans @ www.littleblue.com



ARCHITECT/ENGINEERS:
PROJECT LEAD
Architect, Structural Engineer, Civil Engineer
GUIDON DESIGN
905 N. CAPITOL AVE. SUITE 100 INDIANAPOLIS, IN 46204
317.800.6388 WWW.GUIDONDESIGN.COM
SUSTAINABLE ARCHITECTURE + ENGINEERING

MEP Engineer
APOGEE CONSULTING GROUP
1151 Kildaire Farm Rd.
Suite 120
Cary, NC 27511
Tele: 919-858-7420

Functional Design
CARL WALKER INC.
3211 Internet Blvd., Suite 220
Frisco, TX 75034
Tele: 469-777-5143

Drawing Title EROSION CONTROL DETAILS	Project Title CONSTRUCT PARKING GARAGE ON WEST LOT	Project Number 15.1067	OFFICE OF FACILITIES MANAGEMENT
Approved for Design Concept: FACILITY MANAGEMENT DIVISION MANAGER	Location MEMPHIS, TN	Building Number	VA Project Number 614-319
Date 11/14/2016	Checked By KJC	Drawn By CMB	Drawing Number CJ501