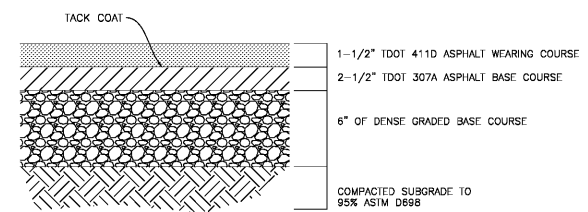
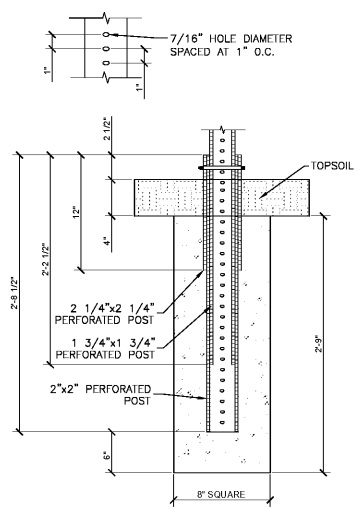


ADA CURB RAMP
N.T.S.



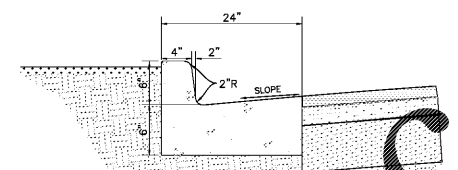
ASPHALT PAVEMENT
N.T.S.



SIGN POST DETAIL SQUARE TUBE FOUNDATION
N.T.S.

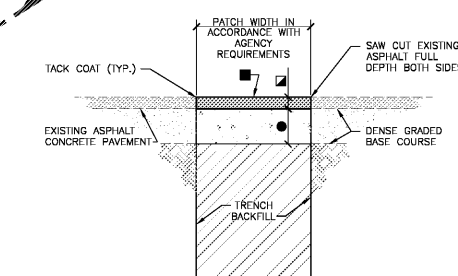
- MATERIALS:**
- PERFORATED POSTS SHALL BE SQUARE TUBE FORMED FROM 0.105 U.S.S. GAUGE ASTM A-368 COLD ROLLED CARBON STEEL. THE SQUARE TUBES SHALL BE WELDED DIRECTLY IN THE CORNER BY HIGH FREQUENCY RESISTANCE WELDING OR EQUAL. THE POSTS SHALL BE EXTERNALLY SCARFED TO AGREE WITH STD. CORNER RADIUS OF 5/32" TO 1/64".
 - PERFORATED POSTS SHALL BE GALVANIZED TO CONFORM TO ASTM A-525. COATING DESIGNATION G-90.
 - ALL HARDWARE SHALL CONFORM TO ASTM A-307 CLASS A.
 - ALL HARDWARE SHALL BE GALVANIZED TO CONFORM TO ASTM A-153 OR CADMIUM PLATED TO CONFORM TO ASTM A-185.
 - ALL CONCRETE SHALL BE 2500 PSI.

- NOTES:**
- FOUNDATION WILL BE CONSTRUCTED WITH 1 3/4"x1 3/4" STARTER SIGN POST. STARTER SIGN POST SHALL BE REMOVED AFTER CONCRETE HAS SET AND EXPOSED SQUARE TUBING WRAPPED AND SEALED WITH DUCT TAPE.
 - FOUNDATION LOCATED 1' FROM EDGE OF PAVEMENT.
 - POST FOUNDATIONS SHALL BE PERPENDICULAR TO THE PAVED SURFACE.
 - BOLT WITH NUT AND LOCK WASHER TO BE 7/16"x3" GALVANIZED.



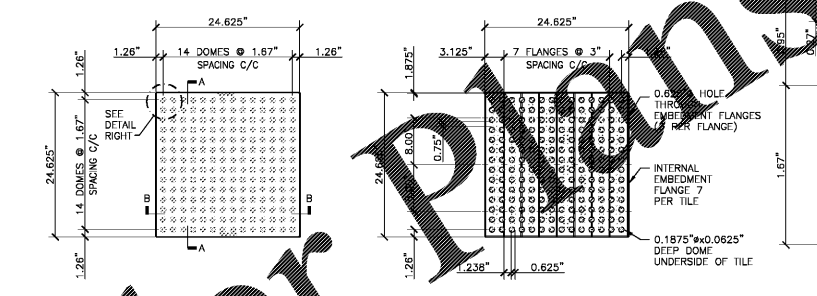
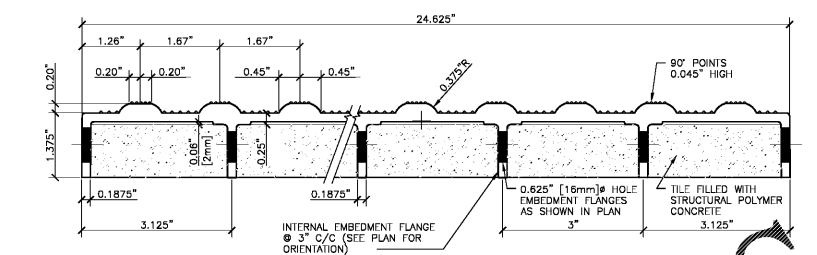
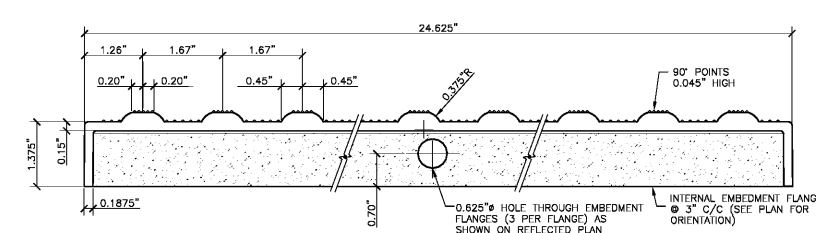
CONCRETE CURB AND GUTTER
N.T.S.

- NOTES:**
- INSTALL EXPANSION JOINTS EVERY 40 FT. MAXIMUM, AT ENDS OF RADIUS, AND A MINIMUM OF 5 FT. FROM INLET STRUCTURES.
 - WHEN CURB AND GUTTER IS USED ON THE INSIDE SIDE OF THE ROADWAY, THE CROSS SLOPE OF THE CURB SHALL MATCH THE ADJACENT PAVEMENT UNLESS OTHERWISE NOTED ON PLANS.
 - CONCRETE SHALL BE PER SPECIFICATIONS.



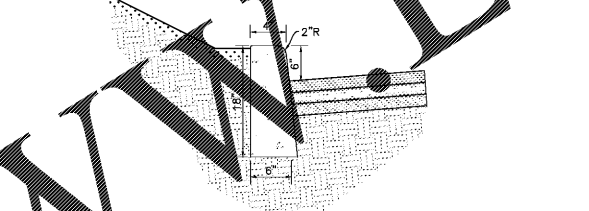
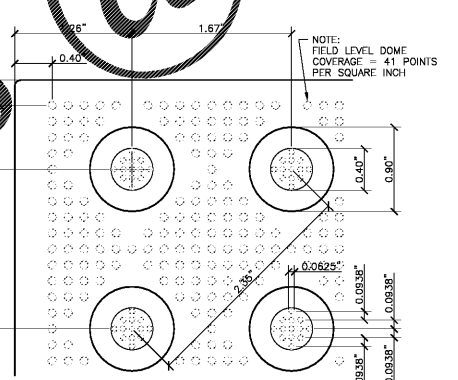
UTILITY TRENCH PATCH
N.T.S.

- SEE ASPHALT PAVEMENT SECTION OR MATCH THICKNESS OF EXISTING PAVEMENT, WHICHEVER IS GREATER.
- BITUMINOUS SURFACE TREATMENT (CHIPSEAL) REQUIRED ONLY FOR LONGITUDINAL TRENCHES WITH WIDTHS GREATER THAN 6" [152mm].
- 6" MINIMUM DENSE GRADED BASE COURSE OR THICKNESS OF EXISTING GRANULAR BASE COURSE MATERIALS, WHICHEVER IS GREATER.



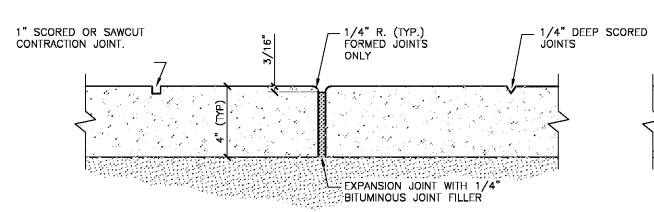
TRUNCATED DOME TACTILE - WARNING STRIP
N.T.S.

DETECTABLE WARNING NOTES:
THE DETECTABLE WARNING STRIP MUST COVER THE ENTIRE WIDTH OF THE RAMP OPENING, EXCLUDING THE WINGS. ALL DOMES MUST BE ALIGNED IN THE DIRECTION OF TRAVEL. ONE CORNER OF THE LEADING EDGE OF THE DETECTABLE WARNING MAY BE MORE THAN 1 FEET FROM THE BACK OF THE CURB. IF THE LEADING EDGE OF THE CURB RETURN, THE LEADING EDGE OF THE DETECTABLE WARNING MAY BE DEFINED BY THE CHORD DRAWN BETWEEN THE LEADING EDGES OF THE RAMP OPENING.

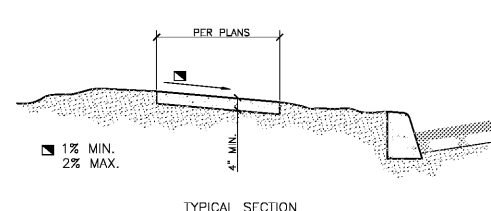


CONCRETE CURB (GUTTERLESS)
N.T.S.

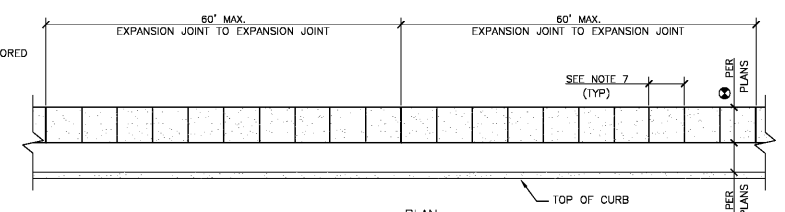
- NOTES:**
- INSTALL EXPANSION JOINTS EVERY 40 FT. MAXIMUM, AT ENDS OF RADIUS, AND A MINIMUM OF 5 FT. FROM INLET STRUCTURES.
 - CONCRETE SHALL BE PER SPECIFICATIONS.



EXPANSION AND SCORED JOINT DETAIL



TYPICAL SECTION



PLAN

- NOTES:**
- EXPANSION JOINTS SHALL BE LOCATED WHERE SIDEWALK ABUTS CONCRETE DRIVEWAYS, CURB OR OTHER ADJACENT STRUCTURES.
 - ONE-HALF INCH BITUMINOUS JOINT FILLER SHALL BE INSTALLED AT EXPANSION JOINT LOCATIONS AND SHALL EXTEND THE FULL DEPTH OF THE CONCRETE.
 - 1" DEEP CONTRACTION JOINTS SHALL BE PLACED AT INTERVALS OF APPROXIMATELY 15' OR AT A SPACING THAT MATCHES THE ADJACENT CURB.
 - FORMED CONTRACTION JOINTS SHALL BE FINISHED WITH A TOOL HAVING A 1/4" RADIUS.
 - SCORED JOINTS SHALL BE 1/4" DEEP AND PLACED AT THE SPACING INDICATED FOR THE WIDTH OF SIDEWALK OR MATCH SCORED JOINTS OF ADJACENT CURB.
 - CONCRETE SHALL BE FINISHED BY MEANS OF A FLOAT, STEEL TROWELLED AND BROOMED WITH A FINE BRUSH IN A TRANSVERSE DIRECTION.
 - 1/4" DEEP SCORED JOINTS (TYP) SPACED AT 6' OR EQUAL TO SIDEWALK WIDTH.

CONCRETE SIDEWALK
N.T.S.

one eighth inch = one foot
one quarter inch = one foot
one half inch = one foot
one inch = one foot
two inches = one foot
three quarters inch = one foot
one and one half inches = one foot
two and one half inches = one foot
three inches = one foot
four inches = one foot
five inches = one foot
six inches = one foot
seven inches = one foot
eight inches = one foot
nine inches = one foot
ten inches = one foot
eleven inches = one foot
twelve inches = one foot

Order Plans @ www.ldilinc.com

VA U.S. Department of Veterans Affairs
MEMPHIS VAMC
1030 JEFFERSON AVE, MEMPHIS, TN 38104

ARCHITECT/ENGINEERS:
PROJECT LEAD
Architect, Structural Engineer, Civil Engineer
GUIDE DESIGN
905 N. CAPITOL AVE. SUITE 100 INDIANAPOLIS, IN 46204
317.800.6388 WWW.GUIDEDSIGN.COM
SUSTAINABLE ARCHITECTURE + ENGINEERING

MEP Engineer
APOGEE CONSULTING GROUP
1151 Kildaire Farm Rd. Suite 120 Cary, NC 27511
Tel: 919-858-7420

Functional Design
CARL WALKER INC.
3211 Internet Blvd., Suite 220 Frisco, TX 75034
Tel: 469-777-5143

BID SET			
Drawing Title SITE DETAILS	Project Title CONSTRUCT PARKING GARAGE ON WEST LOT	Project Number 15.1067	OFFICE OF FACILITIES MANAGEMENT
Approved for Design Concept: FACILITY MANAGEMENT DIVISION MANAGER	Location MEMPHIS, TN	Building Number	VA Project Number 614-319
Date 11/14/2016	Checked By KJC	Drawn By CMB	Drawing Number CS501