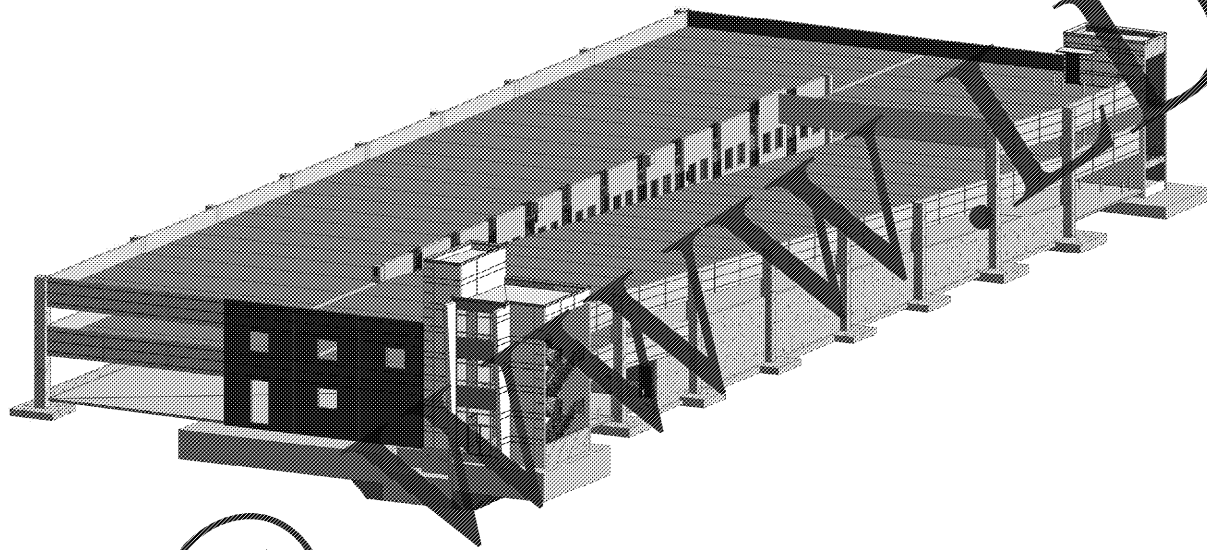
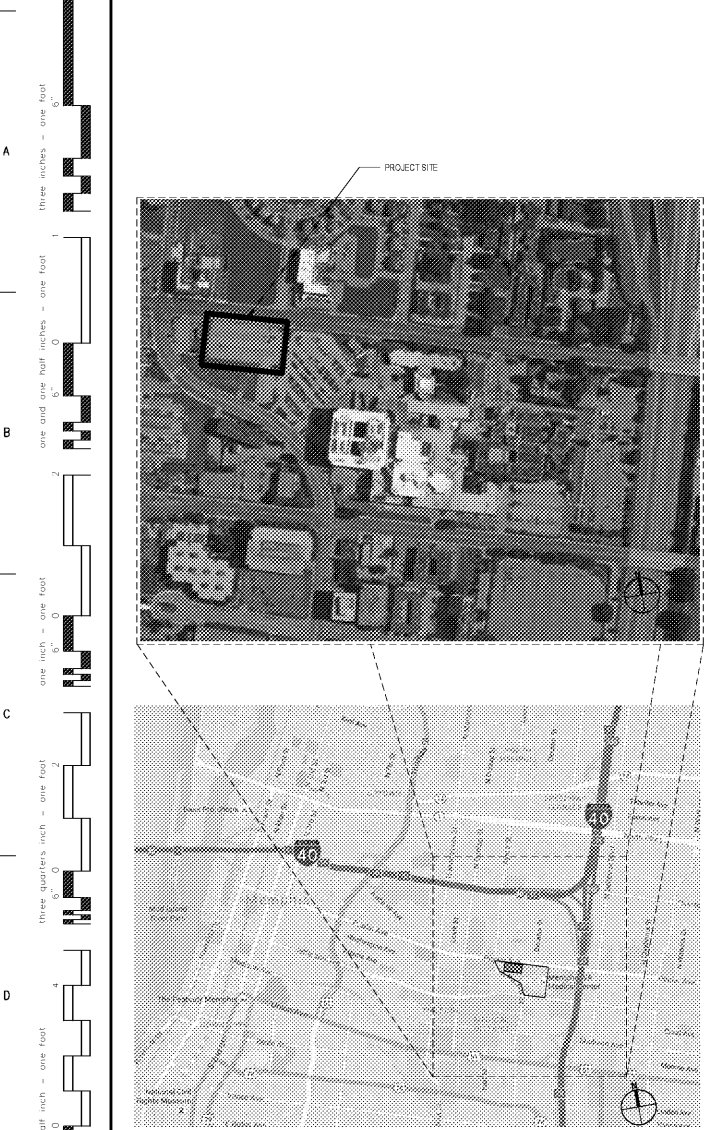


VA MEMPHIS MEDICAL CENTER  
MEMPHIS, TENNESSEE

# CONSTRUCT PARKING GARAGE ON WEST LOT

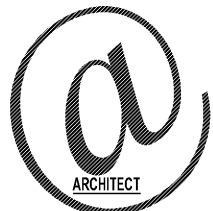
100% DESIGN SUBMISSION  
NOT FOR CONSTRUCTION



SHEET LIST		SHEET LIST	
SHEET NUMBER	SHEET NAME	SHEET NUMBER	SHEET NAME
GENERAL		FUNCTIONAL	
G000	COVER SHEET	AP101	LEVEL 1 PLAN - ARCHITECTURAL PARKING
G101	CODE ANALYSIS	AP102	LEVEL 2 PLAN - ARCHITECTURAL PARKING
G102	LIFE SAFETY PLAN	AP103	LEVEL 3 PLAN - ARCHITECTURAL PARKING
G103	BID ALTERNATES	AP104	ALTERNATE 1 PLAN - ARCHITECTURAL PARKING
CIVIL		AP105	ALTERNATE 2 PLAN - ARCHITECTURAL PARKING
CD101	GENERAL NOTES	AP106	ALTERNATE 3 PLAN - ARCHITECTURAL PARKING
VF101	TOPOGRAPHIC SURVEY	AP107	STRIPING DETAILS - ARCHITECTURAL PARKING
CD101	DEMOLITION PLAN	AW101	SEW SCHEDULE AND SIGNAGE DETAILS
CS101	SITE PLAN	AW102	LEVEL 1 PLAN - WATERPROOFING
CSS01	SITE DETAILS	AW103	LEVEL 2 PLAN - WATERPROOFING
CD101	GRADING PLAN	AW104	LEVEL 3 PLAN - WATERPROOFING
CU101	UTILITY PLAN		WATERPROOFING DETAILS
CUS01	UTILITY DETAILS	FIRE PROTECT	
CJ101	DEMOLITION PHASE EROSION CONTROL PLAN	FX101	FIRE SUPPLY PLAN
CJ102	CONSTRUCTION PHASE EROSION CONTROL PLAN	MECHANICAL	
CJ103	CONSTRUCTION PHASE TRAFFIC PLAN	M101	MECHANICAL NOTES, DETAILS, AND LEGEND
CJ104	MAINTENANCE OF TRAFFIC PLAN	M1401	MECHANICAL PLAN, DETAILS, AND SCHEDULES
CJ501	EROSION CONTROL DETAILS	PLUMBING	
CJ502	EROSION CONTROL DETAILS	P101	PLUMBING NOTES, LEGEND, AND DETAILS
STRUCTURAL		P1101	FIRST FLOOR PLUMBING PLAN
S001	ABBREVIATIONS AND SYMBOLS	P1102	SECOND FLOOR PLUMBING PLAN
S002	LOAD MAPS	P1103	THIRD FLOOR PLUMBING PLAN
S003	STRUCTURAL GENERAL NOTES	P1901	PLUMBING RISERS
S101	FOUNDATION PLAN	PLUMBING	
S102	ENLARGED FOUNDATION DETAILS	PE01	PLUMBING NOTES, LEGEND, AND DETAILS
S103	TYPICAL FOUNDATION SCHEDULES AND DETAILS	PE101	FIRST FLOOR PLUMBING PLAN
S104	FOUNDATION DETAILS, SECTIONS AND DETAILS	PE102	SECOND FLOOR PLUMBING PLAN
S105	FOUNDATION SCHEDULES AND DETAILS	PE103	THIRD FLOOR PLUMBING PLAN
S106	SLAB ON GRADE	EE01	ELECTRICAL NOTES, LEGENDS, AND LIGHT FIXTURE SCHEDULE
S107	FOUNDATION SCHEDULES AND DETAILS	EE101	ELECTRICAL SITE DEMO PLAN
S108	FOUNDATION SCHEDULES AND DETAILS	EE102	ELECTRICAL SITE PLAN
S109	FOUNDATION SCHEDULES AND DETAILS	EE103	HOSPITAL ELECTRICAL PLAN
S110	FOUNDATION SCHEDULES AND DETAILS	EE104	LEVEL 1 ELECTRICAL PLAN
S111	FOUNDATION SCHEDULES AND DETAILS	EE105	LEVEL 2 ELECTRICAL PLAN
S112	FOUNDATION SCHEDULES AND DETAILS	EE106	LEVEL 3 ELECTRICAL PLAN
S113	FOUNDATION SCHEDULES AND DETAILS	EE401	ELECTRICAL ENLARGEMENTS
S114	FOUNDATION SCHEDULES AND DETAILS	EE402	ELECTRICAL ENLARGEMENTS
S115	FOUNDATION SCHEDULES AND DETAILS	EE501	ELECTRICAL DETAILS
S116	FOUNDATION SCHEDULES AND DETAILS	EE502	ELECTRICAL DETAILS AND LAN RISERS
S117	FOUNDATION SCHEDULES AND DETAILS	EE601	SINGLE LINE, PANEL SCHEDULES, EQUIPMENT CONDUCTOR SCHEDULE
ARCHITECTURAL			
AS01	ARCHITECTURAL SYMBOLS AND ABBREVIATIONS		
AS02	FIRST FLOOR PLAN		
AS03	SECOND FLOOR PLAN		
AS04	THIRD FLOOR PLAN		
AS05	ROOF PLAN		
AS06	BUILDING ELEVATIONS		
AS07	BUILDING ELEVATIONS		
AS08	BUILDING ELEVATIONS		
AS09	ENLARGED BUILDING ELEVATIONS		
AS10	ENLARGED BUILDING ELEVATIONS		
AS11	BUILDING ELEVATIONS		
AS12	ENLARGED CURTAIN WALL ELEVATIONS		
AS13	WALL SECTIONS		
AS14	STAR SECTIONS		
AS15	STAR SECTIONS		
AS16	DETAILS		
AS17	ENLARGED PLANS		
AS18	INTERIOR ELEVATIONS		

Order Plans  
 C:\Users\lford\Documents\1517\_Memphis\_VA\_Memphis\_Parking\_Garage\_Shawkins.rvt

**OWNER**  
 MEMPHIS VA MEDICAL CENTER  
 1030 Jefferson Ave  
 Memphis, TN 38104  
 p: 901.523.8990 x 5023  
 e: leland\_ford@va.gov



**ARCHITECT**  
 GUIDON DESIGN INC.  
 Contact: Uglesja Arjic  
 Architect  
 905 North Capitol Avenue  
 Suite 100  
 Indianapolis, IN 46204  
 p: 317.800.6388 x 301  
 e: uarjic@guidondesign.com

**CIVIL ENGINEER**  
 GUIDON DESIGN INC.  
 Contact: Kyle Coy  
 Civil Engineer  
 Project PM  
 905 North Capitol Avenue  
 Suite 100  
 Indianapolis, IN 46204  
 p: 317.800.6388 x 110  
 e: kcoy@guidondesign.com

**STRUCTURAL ENGINEER**  
 GUIDON DESIGN INC.  
 Contact: Mark Vanderveide  
 Structural Engineer  
 905 North Capitol Avenue  
 Suite 100  
 Indianapolis, IN 46204  
 p: 317.800.6388 x 119  
 e: mvanderveide@guidondesign.com

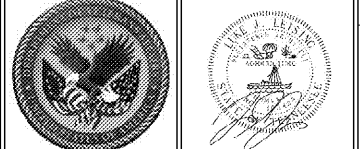
**MECHANICAL, ELECTRICAL & PLUMBING**  
 APOGEE CONSULTING GROUP  
 Contact: Jim Salty  
 Sr. Project Manager  
 1151 Kiddire Farm Rd  
 Suite 120  
 Cary, NC 27511  
 p: 919.858.7420 x 308  
 e: jksalty@apogee.com

**PARKING CONSULTANT**  
 CARL WALKER INC.  
 Contact: Gregg Wells  
 Senior Parking Specialist  
 3111 Internet Blvd  
 Suite 229  
 Frisco, TX 75043  
 p: 214.610.0720  
 e: gwells@carwalker.com

_____	_____
DIRECTOR	ITP CHAIRMAN
_____	_____
CHIEF FACILITIES MANAGEMENT	SAFETY OFFICER
_____	_____
NAME	

**BID ALTERNATES**

ALT.	DESCRIPTION (REFER TO SHEET G103 FOR MORE INFORMATION)
1.	<b>REMOVE ELEVATOR P17</b> SECOND ELEVATOR CAB, MACHINE, EQUIPMENT, KEEP THE SHAFT AND ALL CORRESPONDING ELEMENTS IN FILL OPENINGS WITH PRECAST PUNCH PANEL.
2.	<b>AREA DEDUCT #1</b> DEDUCT LEVEL 3 PRECAST CONCRETE STRUCTURE AND ASSOCIATED ITEMS FROM COLUMN LINE 1-9B TO LEVEL 3 COLUMN LINE 1-7-BIC. REDUCE WEST STAR TOWER 1 LEVEL. THIS AREA DEDUCT INCLUDES PRECAST SPANDRELS, DOUBLE TEES, REDUCED LIGHTING AND ELECTRICAL, REDUCED PARKING STRIPING, AND ALL OTHER ASSOCIATED ITEMS SHOWN AS BASE BID IN THIS LOCATION.
3.	<b>AREA DEDUCT #2</b> DEDUCT LEVEL 3 PRECAST CONCRETE STRUCTURE AND ASSOCIATED ITEMS FROM COLUMN LINE 1-9B TO LEVEL 2 COLUMN LINE 1-7-BIC. REDUCE EAST'S TOWER AND ELEVATOR TOWER 1 LEVEL. THIS AREA DEDUCT INCLUDES PRECAST SPANDRELS, DOUBLE TEES, REDUCED LIGHTING AND ELECTRICAL, REDUCED PARKING STRIPING, AND ALL OTHER ASSOCIATED ITEMS SHOWN AS BASE BID IN THIS LOCATION.
4.	<b>AREA DEDUCT #3</b> DEDUCT LEVEL 2 PRECAST CONCRETE STRUCTURE AND ASSOCIATED ITEMS FROM COLUMN LINE 1-9B TO LEVEL 2 COLUMN LINE 1-7-BIC. REDUCE WEST STAR TOWER 1 LEVEL. THIS AREA DEDUCT INCLUDES PRECAST SPANDRELS, DOUBLE TEES, REDUCED LIGHTING AND ELECTRICAL, REDUCED PARKING STRIPING, AND ALL OTHER ASSOCIATED ITEMS SHOWN AS BASE BID IN THIS LOCATION.



ARCHITECT/ENGINEERS:  
**PROJECT LEAD**  
 Architect, Structural Engineer, Civil Engineer  
**GUIDON DESIGN**  
 905 N. CAPITOL AVE. SUITE 100 INDIANAPOLIS, IN 46204  
 317.800.6388 WWW.GUIDONDESIGN.COM  
 SUSTAINABLE ARCHITECTURE + ENGINEERING

**MEP Engineer**  
 APOGEE CONSULTING GROUP  
 1151 Kiddire Farm Rd.  
 Suite 120  
 Cary, NC 27511  
 Tele: 919-858-7420

**Functional Design**  
 CARL WALKER INC.  
 3211 Internet Blvd., Suite 220  
 Frisco, TX 75034  
 Tele: 469-777-5143

Drawing Title: **COVER SHEET**  
 Approved for Design Concept:  
**FACILITY MANAGEMENT DIVISION MANAGER**

Project Title: **CONSTRUCT PARKING GARAGE ON WEST LOT**  
 Location: **MEMPHIS, TN**  
 Date: **11/14/2016**  
 Checked By: **UJ**  
 Drawn By: **KH**

Project Number: **15.1067**  
 Building Number:  
 Drawing Number: **G1000**  
**OFFICE OF FACILITIES MANAGEMENT**  
 VA Project Number: **614-319**  
 U.S. Department of Veterans Affairs