

MARK HQPA													
ENCLOSURE	MOUNTING SURFACE	VOLTAGE	WIRE	NAIC RATING	MAINS	PHASE RATING	N BUS RATING	SERVICE RATED	NOTES				
NEMA 1		480Y/277	3 4	14	MCB	400	100%	NO	NEW PANELBOARD				
CKT #	LOAD	BREAKER	PHASE (kVA)			BREAKER			LOAD	CKT #			
#	DESCRIPTION	P TRIP	A	B	C	A	B	C	TRIP P	DESCRIPTION	#		
1	SPACE									SPACE	2		
3	SPACE									SPACE	4		
5	SPACE									SPACE	6		
7	SPACE									SPACE	8		
9	SPACE									SPACE	10		
11	SPACE									SPACE	12		
13	SPACE	1 20							20 1	SPACE	14		
15	SPACE	1 20							20 1	SPACE	16		
17	SPACE	1 20							20 1	SPACE	18		
19	SPACE	1 20							20 1	SPACE	20		
21	LGT - ELEV SHAFT	1 20			EX			EX	20 1	SHUNT TRIP	22		
23	SPACE	1 20							20 1	SPACE	24		
25	SPACE	1 20							20 1	SPACE	26		
27	TRANSFORMER DT-QPA	3 40			EX			EX	60 3	PENTHOUSE AC UNIT	28		
29	SPACE									SPACE	30		
31	SPACE									SPACE	32		
33	ELEV S1	3 150								SPACE	34		
35	SPACE									SPACE	36		
37	SPACE									SPACE	38		
39	ELEV S2	3 150								SPACE	40		
41	SPACE									SPACE	42		

TOTAL (kVA) #A #B #C HIGH PHASE (AMPS)  
TOTAL CONNECTED LOAD (kVA) TOTAL LOAD (AMPS)

CREATE A DIRECTORY TO INDICATE INSTALLED LOADS. INDICATE LOAD TYPE (REC, LTG, AHU-1, ETC.) AND ROOM NUMBERS SERVED FOR EVERY BRANCH CIRCUIT.

NOTES:  
BOLD AND ITALIC INDICATES NEW LOADS BASED ON ASBUILT CONDITIONS. THESE LOADS WILL BE REVISED TO REFLECT THE CORRECT CONDITIONS AS LISTED BY THE CONTRACTOR'S APPROVED SUBMITTAL.

MARK QPA													
ENCLOSURE	MOUNTING SURFACE	VOLTAGE	WIRE	NAIC RATING	MAINS	PHASE RATING	N BUS RATING	SERVICE RATED	NOTES				
NEMA 1		208Y/120	3 4	MCB	50	125	100%	NO	NEW PANELBOARD				
CKT #	LOAD	BREAKER	PHASE (kVA)			BREAKER			LOAD	CKT #			
#	DESCRIPTION	P TRIP	A	B	C	A	B	C	TRIP P	DESCRIPTION	#		
1	LGT MACH RM	1 20			EX			EX	20 1	GFI ROOF/LGTS	2		
3	REC - MACH RM	1 20						EX	20 1	ELEV SHAFT LIGHTING	4		
5	PANEL REC & CUTSIDE WALL	1 20						EX	20 1	HOSTWAY DAMPER	6		
7	ELEV CAB LGT S1	1 20			EX			EX	20 1	ELEV SHAFT POWER	8		
9	ELEV CAB LGT S2	1 20			EX			EX	20 1	SPACE	10		
11	SPACE									SPACE	12		
13	SPACE	1 20							20 1	SPACE	14		
15	SPACE	1 20							20 1	SPACE	16		
17	SPACE	1 20							20 1	SPACE	18		
19	SPACE									SPACE	20		
21	SPACE									SPACE	22		
23	SPACE									SPACE	24		
25	SPACE									SPACE	26		
27	SPACE									SPACE	28		
29	SPACE									SPACE	30		

TOTAL (kVA) #A #B #C HIGH PHASE (AMPS)  
TOTAL CONNECTED LOAD (kVA) TOTAL LOAD (AMPS)

CREATE A DIRECTORY TO INDICATE INSTALLED LOADS. INDICATE LOAD TYPE (REC, LTG, AHU-1, ETC.) AND ROOM NUMBERS SERVED FOR EVERY BRANCH CIRCUIT.

NOTES:  
BOLD AND ITALIC INDICATES NEW LOADS

MARK HQPB													
ENCLOSURE	MOUNTING SURFACE	VOLTAGE	WIRE	NAIC RATING	MAINS	PHASE RATING	N BUS RATING	SERVICE RATED	NOTES				
NEMA 1		480Y/277	3 4	22	MCB	350	100%	NO	NEW PANELBOARD 2 SECTION				
CKT #	LOAD	BREAKER	PHASE (kVA)			BREAKER			LOAD	CKT #			
#	DESCRIPTION	P TRIP	A	B	C	A	B	C	TRIP P	DESCRIPTION	#		
1	EXHAUST FAN EF-16	3 15			EX				20 1	SHUNT TRIP	2		
3	SPACE									SPACE	4		
5	SPACE									SPACE	6		
7	ELEVATOR P-10	3 125			EX			EX	80 3	ROOFTOP AC	8		
9	SPACE									SPACE	10		
11	SPACE									SPACE	12		
13	SPACE									SPACE	14		
15	SPACE									SPACE	16		
17	SPACE									SPACE	18		
19	SPACE									SPACE	20		
21	SPACE									SPACE	22		
23	SPACE									SPACE	24		
25	SPACE									SPACE	26		
27	SPACE									SPACE	28		
29	SPACE									SPACE	30		
31	SPACE									SPACE	32		
33	SPACE									SPACE	34		
35	SPACE									SPACE	36		
37	SPACE									SPACE	38		
39	SPACE									SPACE	40		
41	SPACE									SPACE	42		
43	ELEVATOR P-12	3 125							125 3	ELEVATOR P-11	44		
45	SPACE									SPACE	46		
47	SPACE									SPACE	48		
49	TRANSFORMER DT-QPB	3 40			EX			EX	15 3	EXHAUST FAN EF-17	50		
51	SPACE									SPACE	52		
53	FIRE PROTECTION	1 20			EX			EX	20 1	LGT - HOSTWAY	54		
55	FIRE PROTECTION	1 20			EX			EX	20 1	SPACE	56		
57	FIRE PROTECTION	1 20							20 1	SPACE	58		
59	SPACE	1 20							20 1	SPACE	60		

TOTAL (kVA) #A #B #C HIGH PHASE (AMPS)  
TOTAL CONNECTED LOAD (kVA) TOTAL LOAD (AMPS)

CREATE A DIRECTORY TO INDICATE INSTALLED LOADS. INDICATE LOAD TYPE (REC, LTG, AHU-1, ETC.) AND ROOM NUMBERS SERVED FOR EVERY BRANCH CIRCUIT.

NOTES:  
BOLD AND ITALIC INDICATES NEW LOADS BASED ON ASBUILT CONDITIONS. THESE LOADS WILL BE REVISED TO REFLECT THE CORRECT CONDITIONS AS LISTED BY THE CONTRACTOR'S APPROVED SUBMITTAL.

MARK QPB													
ENCLOSURE	MOUNTING SURFACE	VOLTAGE	WIRE	NAIC RATING	MAINS	PHASE RATING	N BUS RATING	SERVICE RATED	NOTES				
NEMA 1		208Y/120	3 4	MCB	50	125	100%	NO	NEW PANELBOARD				
CKT #	LOAD	BREAKER	PHASE (kVA)			BREAKER			LOAD	CKT #			
#	DESCRIPTION	P TRIP	A	B	C	A	B	C	TRIP P	DESCRIPTION	#		
1	REC - ELEV MACH RM	1 20			EX			EX	20 1	LGT - MACH RM	2		
3	LGT & REC	1 20						EX	20 1	LGT - ELEV MACH RM	4		
5	CONTROLS MACH RM	1 20			EX			EX	20 1	TRANSFORMER CONTROLS MACH RM	6		
7	HOSTWAY DAMPER	1 20						EX	20 1	TRANSFORMER CONTROLS MACH RM	8		
9	EXHAUST FAN EF-19	1 20			EX			EX	20 1	TRANSFORMER CONTROLS MACH RM	10		
11	REC - ELEV PIT	1 20								SPACE	12		
13	REC - ELEV MACH RM	1 20			EX			EX	20 1	REC - ROOF	14		
15	P-10 ELEV CAB LGT	1 20						EX	20 1	REC - ROOF	16		
17	ELEV INTERFACE CONTROL	1 20						EX	20 1	SPACE	18		
19	REC - ELEV MACH RM	1 20			EX			EX	30 2	SPACE	20		
21	P-11 ELEV CAB LGT	1 20								SPACE	22		
23	P-12 ELEV CAB LGT	1 20								SPACE	24		
25	SPACE									SPACE	26		
27	SPACE									SPACE	28		
29	SPACE									SPACE	30		

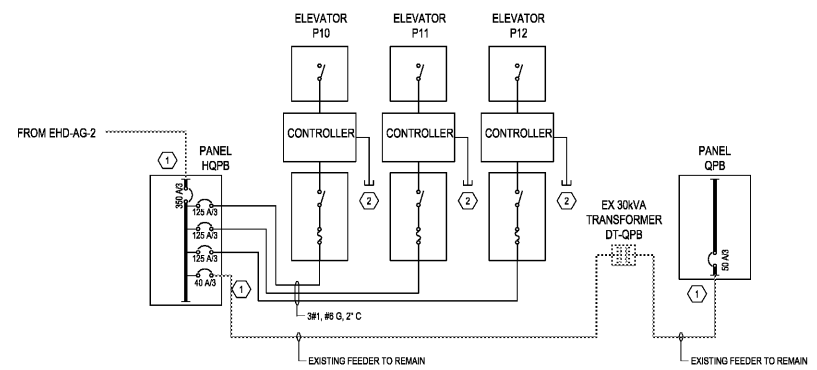
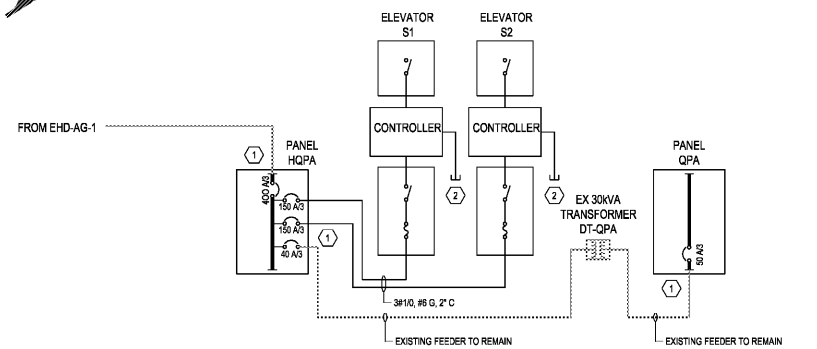
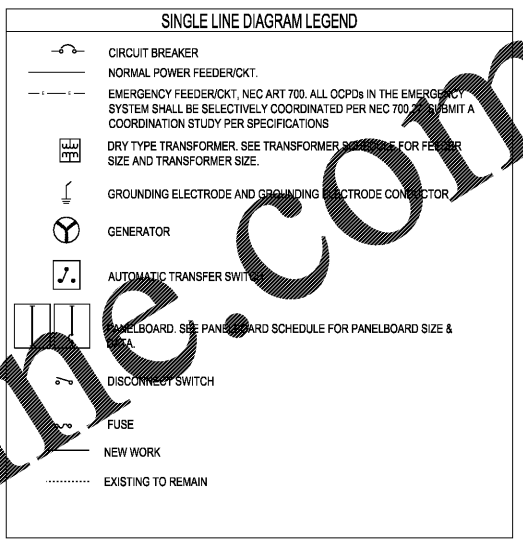
TOTAL (kVA) #A #B #C HIGH PHASE (AMPS)  
TOTAL CONNECTED LOAD (kVA) TOTAL LOAD (AMPS)

CREATE A DIRECTORY TO INDICATE INSTALLED LOADS. INDICATE LOAD TYPE (REC, LTG, AHU-1, ETC.) AND ROOM NUMBERS SERVED FOR EVERY BRANCH CIRCUIT.

NOTES:  
BOLD AND ITALIC INDICATES NEW LOADS

- ### SHEET NOTES
- EXISTING CONDUCTORS TO REMAIN. COULD AND PROTECT EXISTING CONDUCTORS DURING REMOVAL OF EXISTING PANELBOARDS. CONTRACTOR SHALL INSTALL ANY ADDITIONAL CONDUIT AND FITTINGS TO ALLOW INSTALLATION OF NEW PANELBOARDS.
  - NETWORK CONNECTION FROM ELEVATOR CONTROLLERS TO PC CONNECTION IN CONTROL RM.

- ### GENERAL NOTES
- THIS IS AN ELECTRICAL POWER DISTRIBUTION SYSTEM SINGLE LINE DIAGRAM. NOT ALL MECHANICAL EQUIPMENT CIRCUITS AND BRANCH CIRCUITS ARE SHOWN.
  - WORK ON THE SECONDARY OF DRY-TYPE XFORMERS SHALL BE INSTALLED WITHIN 10' PER NEC 240.21(C)(2).
  - LOCATION OF MAIN BREAKERS AND FEEDERS INTO EQUIPMENT IS NOT INTENDED TO SHOW TOP OR BOTTOM MOUNTED MAIN BREAKER OR BOTTOM TOP OR SIDE FEEDER ENTRY. THE SINGLE LINE DIAGRAM IS PURELY DIAGRAMMATIC. CONTRACTOR SHALL VERIFY PROPER BREAKER POSITIONS AND FEEDER ENTRIES INTO EQUIPMENT AND PROVIDE AS REQUIRED.
  - MINIMUM WIRE SIZE #12 CU, #12 CU GND.



1 NTS ELECTRICAL SINGLE LINE DIAGRAM - NEW

CONSTRUCTION DOCUMENTS FULLY SPRINKLERED

CONSULTANTS: Date: _____	ARCHITECT/ENGINEERS:  BES DESIGN/BUILD, LLC 766 Middle St, Fairhope, AL 36532 Phone: 251.990.5778 Fax: 251.990.3716	Drawing Title: <b>NEW SINGLE LINE DIAGRAMS &amp; SCHEDULES</b>	Project Title: <b>UPGRADE ELEVATORS BUILDINGS A, B, C, AND D</b>	Project Number: 508-14-123	Building Number: A	Drawing Number: <b>EP602</b>	ATLANTA VA MEDICAL CENTER 
Revisions: _____ Date: _____		Approved: Project Director	Location: ATLANTA VAMC 1670 CLAIRMONT ROAD, DECATUR, GA, 30033	Date: 05/01/2017	Drawn: KRW	Checked: MCE	Dwg. 27 of 28

Scale: one eighth inch = one foot  
 one quarter inch = one foot  
 one half inch = one foot  
 three quarters inch = one foot  
 one inch = one foot  
 one and one half inches = one foot  
 two inches = one foot  
 three inches = one foot  
 four inches = one foot  
 five inches = one foot  
 six inches = one foot  
 seven inches = one foot  
 eight inches = one foot  
 nine inches = one foot  
 ten inches = one foot  
 eleven inches = one foot  
 twelve inches = one foot

Scale: one eighth inch = one foot  
 one quarter inch = one foot  
 one half inch = one foot  
 three quarters inch = one foot  
 one inch = one foot  
 one and one half inches = one foot  
 two inches = one foot  
 three inches = one foot  
 four inches = one foot  
 five inches = one foot  
 six inches = one foot  
 seven inches = one foot  
 eight inches = one foot  
 nine inches = one foot  
 ten inches = one foot  
 eleven inches = one foot  
 twelve inches = one foot