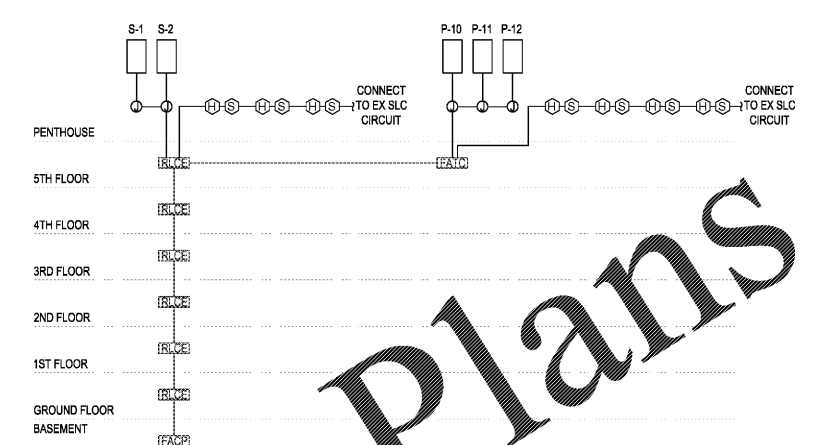
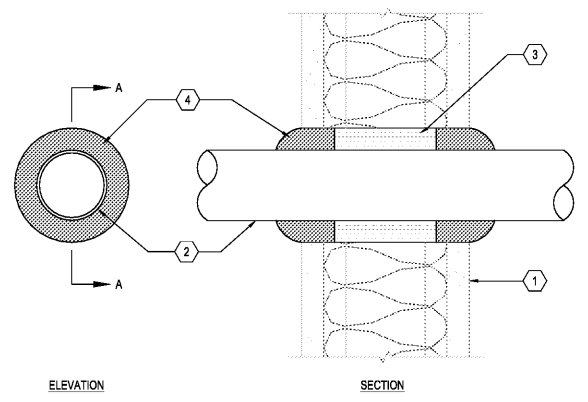


- ANSI/ASME A17.1-1998/A17.1a-1997/A17.1b-1998, SAFETY CODE FOR ELEVATORS AND ESCALATORS, IS APPLICABLE TO THIS PROJECT
- THE HOISTWAY(S) AND MACHINE ROOM(S) FOR THIS INSTALLATION ARE SPRINKLERED. THEREFORE, ANSI/ASME A17.1 REQUIRES THAT THE MAIN POWER SUPPLY TO THE AFFECTED ELEVATOR(S) BE AUTOMATICALLY DISCONNECTED UPON OR PRIOR TO APPLICATION OF WATER.
- IN ACCORDANCE WITH SECTION 3-9.4 OF ANSI/NFPA 72, NATIONAL FIRE ALARM CODE, HEAT DETECTORS USED TO SHUT DOWN ELEVATOR POWER PRIOR TO SPRINKLER OPERATION SHALL HAVE BOTH A LOWER TEMPERATURE RATING AND A HIGHER SENSITIVITY THAN THE SPRINKLER HEADS. COORDINATE REQUIREMENTS WITH INSTALLATION OF FIRE PROTECTION SYSTEM.
- FIRE ALARM SYSTEM SMOKE DETECTORS SHALL BE INSTALLED IN ELEVATOR LOBBIES, ELEVATOR HOISTWAYS, AND ELEVATOR MACHINE ROOMS TO INITIATE ELEVATOR RECALL FOR FIRE FIGHTERS' SERVICE IN ACCORDANCE WITH RULE 211.3 OF ANSI/ASME A17.1 AND SECTION 3-9.3 OF ANSI/NFPA 72
- IN ACCORDANCE WITH SECTION 3-9.3.7 OF ANSI/NFPA 72 AND ELEVATOR MANUFACTURER'S REQUIREMENTS, FOUR (4) EACH FIRE ALARM ADDRESSABLE INTERFACE MODULES WITH RELAY OUTPUTS SHALL BE PROVIDED IN EACH ELEVATOR MACHINE ROOM TO INTERFACE WITH THE ELEVATOR CONTROLLER(S). EACH MODULE SHALL PROVIDE THE FOLLOWING SIGNAL (OPERATION OF CONTACTS), RESPECTIVELY.
 - SMOKE DETECTOR IN THE DESIGNATED (PRIMARY) ELEVATOR LOBBY IS ACTIVATED.
 - SMOKE DETECTOR IN ANY OF THE ELEVATOR LOBBIES EXCEPT THE DESIGNATED (PRIMARY) LOBBY IS ACTIVATED.
 - SMOKE DETECTOR IN THE HOISTWAY IS ACTIVATED.
 - SMOKE DETECTOR IN THE ELEVATOR MACHINE ROOM IS ACTIVATED.

1 ELEVATOR ELECTRICAL REQUIREMENTS
NTS

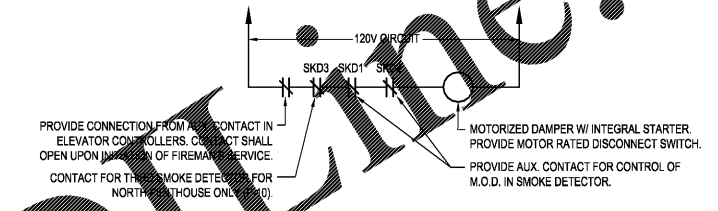


4 FIRE ALARM SYSTEM RISER DIAGRAM
NTS

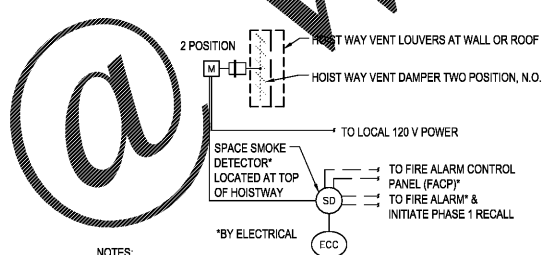


- REFER TO UL DETAIL W-L-1007
- UL U400 DESIGN SERIES 1-HR RATED WALL BY ARCH.
 - MAX 4" EMT.
 - MINIMUM 2-7/8" THICKNESS 4 PCF MINERAL WOOL INSULATION TIGHTLY PACKED INTO OPENING AS A PERMANENT FORM. PACKING MATERIAL SHALL BE RECESSED FROM BOTH SURFACES OF WALL AS REQUIRED TO ACCOMMODATE THE REQUIRED THICKNESS OF MATERIAL.
 - MINIMUM 5/8" THICKNESS OF FILL SEALANT APPLIED WITHIN ANNULUS, FLUSH WITH BOTH SURFACES OF WALL. APPLY ADDITIONAL SEALANT SUCH THAT A MINIMUM 1" THICK CROWN IS FORMED AROUND THE PENETRATING CONDUIT.

2 FIRE RATED WALL PENETRATION DETAIL
NTS



3 MOTORISED DAMPER WIRING DIAGRAM
NTS



- NOTES:
- THE DAMPER SHALL REMAIN CLOSED DURING NORMAL OPERATION AND OPEN UPON LOSS OF POWER FROM A SIGNAL FROM THE SMOKE DETECTOR, LOCATED AT THE TOP OF THE HOISTWAY. COORDINATE NUMBER OF CONTACTS WITH THE ELECTRICAL AND FIRE PROTECTION DESIGNS.
 - SHOW DAMPER LOCATION AND SIZE ON THE DRAWINGS.
 - PROVIDE A BINARY DDC POINT TO SOUND AN ALARM AT ECC.
 - REMOTE ALARM SHALL BE ACTIVATED WHEN THE HOISTWAY SMOKE DETECTOR DETECTS SMOKE.
 - SEE MECHANICAL DRAWINGS FOR LOCATIONS OF HOISTWAY VENT DAMPERS.

5 HOISTWAY VENT DAMPER (HVD) CONTROLS
NTS

Order Plans

| | | | | | | | | | | |
|--------------|--|----------------------|--|----------------------------|--|---|--|------------------|--|--------------------------------|
| CONSULTANTS: | | ARCHITECT/ENGINEERS: | | Drawing Title: | | Project Title: | | Project Number: | | ATLANTA VA MEDICAL CENTER |
| | | BES DESIGN/BUILD | | ELECTRICAL DETAILS | | UPGRADE ELEVATORS BUILDINGS A, B, C, AND D | | 508-14-123 | | |
| Revisions: | | Date: | | Approved: Project Director | | Location: | | Building Number: | | Department of Veterans Affairs |
| | | | | | | ATLANTA VAMC 1670 CLAIRMONT ROAD, DECATUR, GA, 30033 | | A | | |
| | | | | | | Date: | | Drawing Number: | | Dwg. 25 of 28 |
| | | | | | | 05/01/2017 | | EP501 | | |

CONSTRUCTION DOCUMENTS FULLY SPRINKLERED

