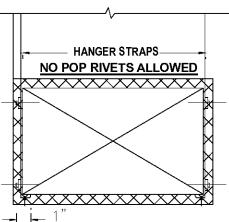


NOTES:  
 1. PROVIDE ACCESS DOOR IN DUCTWORK AS NEAR TO FIRE DAMPER AS POSSIBLE.  
 2. FIRE DAMPERS SHALL BE INSTALLED PER MANUFACTURERS REQUIREMENTS.

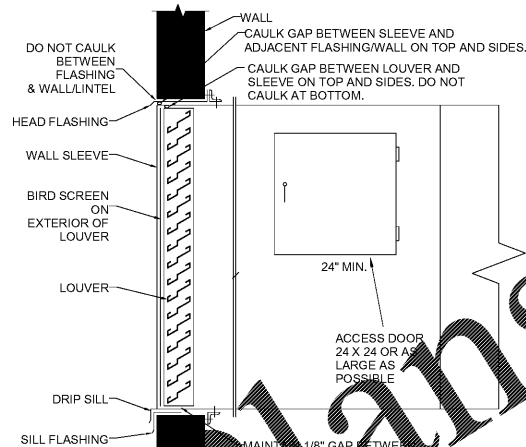
**1 FIRE DAMPER DETAIL**  
 NTS

NO. 10x3/4" SELF TAPPING CADMIUM PLATED SHEET METAL SCREWS TO ANCHOR STRAPS TO DUCT AND JOISTS. ALL STRAPS SHALL BE TIGHT AGAINST DUCT AND MEMBERS.

MAX. SIDE	HANGER	HORIZONTAL SUPPORT ANGLE	MAXIMUM SPACING
UP TO 34"	1" X 18 GAGE STRAP	NONE REQUIRED	8'-0"
MAX. 34" TO 40"	1" X 18 GAGE STRAP	NONE REQUIRED	6'-0"



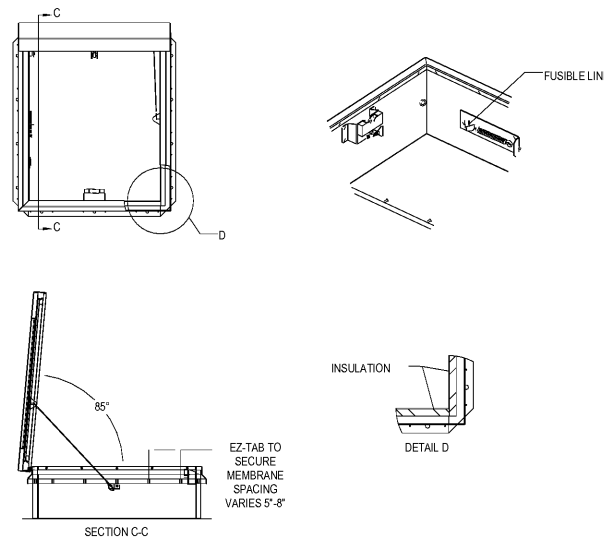
**2 DUCT STRAP HANGER**  
 NTS



**GENERAL NOTES**

- DO NOT ATTACH DUCT TO TOP OF LOWER LOUVER BLADE AS TYPICAL. THIS CREATES SEALING PROBLEMS AT MULLIONS AND OTHER VERTICAL MEMBERS.
- CONSTRUCT SLEEVE AND DUCTWORK TO SUPPORT WEIGHT OF SERVICE TECHNICIAN.
- SEAL JOINT BETWEEN DUCT AND SLEEVE WATER TIGHT ALL AROUND.
- INSULATE DUCT AND SLEEVE AS SPECIFIED.

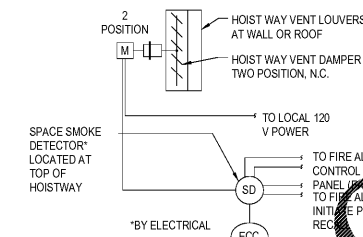
**LOUVER DETAIL**  
 NTS



- SPECIFICATIONS**
- COVER: 11 GAUGE ALUMINUM COVER STIFFENED TO WITHSTAND A LIVE LOAD OF 30 PSF WITH A MAX DEFLECTION OF 1/150 OF THE SPAN
  - LINER: 18 GAUGE ALUMINUM
  - CURB AND COUNTERFLASH W/ EZ TAB: 11 GAUGE ALUMINUM
  - FINISH: COVER - MIL CURB - MIL
  - GAS SPRING WITH DAMPER: DESIGNED TO OPEN AGAINST A 30 PSF SNOW LOAD IN NOT LESS THAN 2 SECONDS
  - HOLD OPEN ARM: LOCK COVER IN FULLY OPEN POSITION - ZINC PLATED STEEL
  - LATCH: ZINC PLATED ROTARY LATCH ASSEMBLY DESIGNED TO HOLD COVERS CLOSED AGAINST 30 PSF WIND UPLIFT ZINC PLATED STEEL LATCH STRIKERS ON COVERS
  - HINGES: ZINC PLATED STEEL WITH STAINLESS STEEL HINGE PINS
  - INSULATION: 1\"/>

NOTE:  
 PROVIDE NEW MEMBRANE FLASHING COMPATIBLE WITH EXISTING MEMBRANE ROOF. FLASH EZ-TAB PER VENT DAMPER MANUFACTURER'S WATERTIGHT SEAL. CONTRACTOR TO DETERMINE ROOFING MATERIAL FROM COR TO PREVENT VOIDING ROOF WARRANTY.

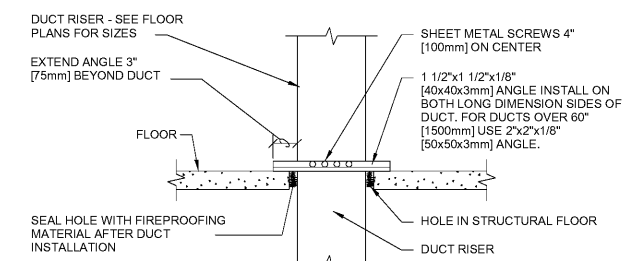
**3 HOISTWAY VENT DETAIL**  
 NTS



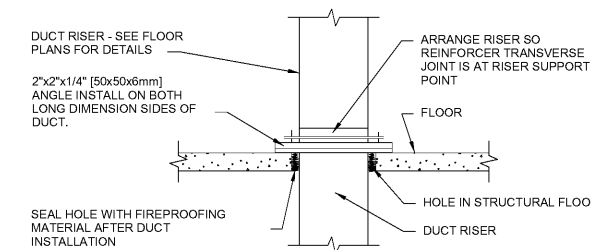
**NOTES:**

- THE DAMPER SHALL REMAIN CLOSED DURING NORMAL OPERATION AND OPEN UPON LOSS OF POWER FROM A SIGNAL FROM THE SMOKE DETECTOR LOCATED AT THE TOP OF THE HOISTWAY. COORDINATE NUMBER OF CONTACTS WITH THE ELECTRICAL AND FIRE DETECTOR SIGNS.
- PROVIDE A 5 AMP DDC POINT TO SOLID STATE RELAY AT ECC.
- REMOVE ALARM SIGNAL BE ACTIVATED WHEN THE HOISTWAY SMOKE DETECTOR DETECTS SMOKE.
- ECC LOCATED IN PLANT CONTROLS OFFICE IN ROOM GC200A. CONTROLS ARE TRIP FROM DDC FROM ELEC. SEE REFERENCE DRAWING LSPOG-C FOR PHYSICAL LOCATION.

**HOISTWAY VENT DAMPER (HVD) CONTROLS**  
 NTS



**0.5 INCH WG (125Pa) TO 2 INCHES WG (500Pa) DUCT RISER SUPPORT**



**2 INCHES WG (500Pa) TO 4 INCHES WG (1000Pa) DUCT RISER SUPPORT**

NOTE:  
 ALL DUCT WORK RISERS WHICH ARE RUN EXPOSED, SUCH AS THRU ATTIC FLOORS AND FAN ROOM FLOORS SHALL BE PROVIDED WITH A 3\"/>

**5 DUCT RISER SUPPORTS**  
 NTS

CONSULTANTS:

ARCHITECT/ENGINEERS:

Drawing Title  
**MECHANICAL DETAILS**

Project Title  
**UPGRADE ELEVATORS BUILDINGS A, B, C, and D**

Project Number  
**508-14-123**

Atlanta VA Medical Center



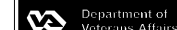
BES DESIGN/BUILD, LLC  
 766 Middle St, Fairhope, AL 36532  
 Phone: 251.990.5778  
 Fax: 251.990.3716

Approved: Project Director

Location  
**ATLANTA VAMC  
 1670 CLAIRMONT ROAD, DECATUR, GA, 30033**

Drawing Number  
**MH601**

Date: 2017.05.01  
 Drawn: MDF  
 Checked: WWB  
 Dwg. 20 of 28



100% CONSTRUCTION DOCUMENT SUBMISSION  
 FULLY SPRINKLERED

Vertical scale markers on the left side of the drawing, ranging from 'one eighth inch = one foot' to 'three eighths inch = one foot'.

Order Plans