

1 BLDG A - FIRST FLOOR

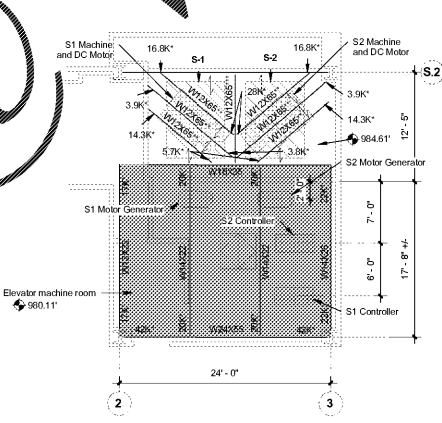
1/16" = 1'-0"

- : SIGNIFIES ELEVATOR STRUCTURES THAT HAVE BEEN EVALUATED FOR NEW ELEVATOR EQUIPMENT
- : SIGNIFIES ELEVATORS THAT ARE TO RECIEVE MODIFICATIONS TO INTERIORS ONLY. THESE ARE NOT IN STRUCTURAL SCOPE

CHANGES IN LOAD TO STRUCTURE:

IT IS OUR PROFESSIONAL OPINION THAT THE STRUCTURE IS SUFFICIENT TO CARRY THE EXPECTED LOADS DURING CONSTRUCTION AND WHILE IN USE. THIS IS BASED ON THE FOLLOWING ASSUMPTIONS AND CONDITIONS:

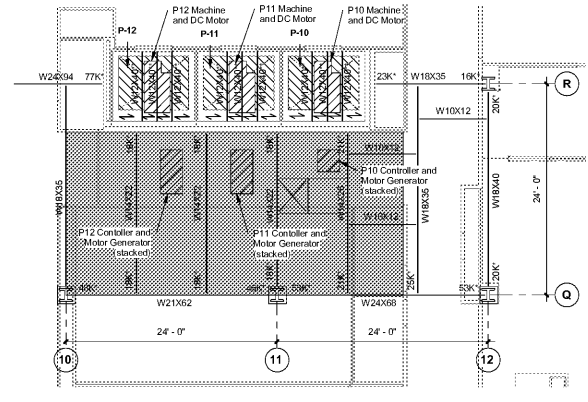
- 1) THE TOTAL WEIGHT OF THE CAR AFTER THE MODERNIZATION SHALL BE LESS THAN OR EQUAL TO THE CURRENT WEIGHT AS SHOWN IN TABLE 1. THE CAR WEIGHT IS DEFINED AS THE WEIGHT OF ALL OF THE COMPONENTS FASTENED TO THE CAR INCLUDING, BUT NOT LIMITED TO THE CROSSHEAD, HITCH PLATES, STILES, BRACE RODS, PLATFORM, SAFETY FLANK, TOE GUARD, CAR PANELS, FINISHES, DOOR OPERATOR MECHANISM AND GUIDE ASSEMBLIES.
- 2) THE TOTAL WEIGHT OF THE MOTOR GENERATOR (OR ANY OTHER EQUIPMENT LOCATED IN THE PLACE OF THE EXISTING MOTOR GENERATOR) AFTER THE MODERNIZATION SHALL BE LESS THAN OR EQUAL TO THE CURRENT WEIGHT AS SHOWN IN TABLE 1.
- 3) THE TOTAL WEIGHT OF THE CONTROLLER AFTER THE MODERNIZATION SHALL BE LESS THAN OR EQUAL TO THE CURRENT WEIGHT AS SHOWN IN TABLE 1.
- 4) THE TOTAL WEIGHT OF THE MACHINE AFTER THE MODERNIZATION SHALL BE LESS THAN OR EQUAL TO THE CURRENT WEIGHT AS SHOWN IN TABLE 1.
- 5) THE TOTAL WEIGHT OF THE DC MOTOR (AS PART OF THE MACHINE) AFTER THE MODERNIZATION SHALL BE LESS THAN OR EQUAL TO THE CURRENT WEIGHT AS SHOWN IN TABLE 1.
- 6) ANY NEW COMPONENTS AFFIXED TO THE STRUCTURE SHALL BE PLACED IN THE SAME LOCATION AS THE COMPONENT THEY ARE REPLACING.
- 7) AT SOME POINT IN CONSTRUCTION A TRAVEL ELEVATOR CARRYING TRAFFIC SHOULD BE SUPPORTED BY PIPE STANDS, A HYDRAULICALLY OPERATED SYSTEM OR SPRING BUFFER SYSTEM. IF A PIPE STAND IS USED, IT SHALL BE RATED TO SUPPORT 125 PERCENT OF THE CAR WEIGHT.
- 8) THE CAR CAPACITY SHALL NOT BE INCREASED.



2 BLDG A - PENTHOUSE FLOOR 2

1/8" = 1'-0"

- *: INDICATES THE BEAM END REACTIONS ON ORIGINAL CONSTRUCTION DOCUMENTS (ASSUMED ASD B/C NOT NOTED).
- ***: THIS BEAM WAS SHOWN AS W12X45 ON PLAN, BUT IS AT LEAST W12X65 IN THE FIELD BASED ON MEASUREMENTS.
- ****: THIS BEAM WAS SHOWN AS W12X40 ON PLAN, BUT IS AT LEAST W12X65 IN THE FIELD BASED ON MEASUREMENTS.
- : INDICATES DIRECTION OF DECK SPAN.
- : INDICATES 150 PSF LIVE LOAD ON ORIGINAL CONSTRUCTION DOCUMENTS.



3 BLDG A - PENTHOUSE FLOOR

1/8" = 1'-0"

- *: INDICATES THE BEAM END REACTIONS ON ORIGINAL CONSTRUCTION DOCUMENTS (ASSUMED ASD B/C NOT NOTED).
- ***: THIS BEAM WAS SHOWN AS W12X45 ON PLAN, BUT IS AT LEAST W12X65 IN THE FIELD BASED ON MEASUREMENTS.
- ****: THIS BEAM APPEARS TO BE AT LEAST W12X40.
- : INDICATES DIRECTION OF DECK SPAN.
- : INDICATES 150 PSF LIVE LOAD ON ORIGINAL CONSTRUCTION DOCUMENTS.



CONSTRUCTION DOCUMENTS

CONSULTANTS: Korngay Engineering Inc. Structural Consultant 363 Pierce Avenue, Suite 202 Macon, GA 31204 (478)745-6161 ph keimacon.com Project No: 15-266 	ARCHITECT/ENGINEERS: BES DESIGN/BUILD BES DESIGN/BUILD, LLC 766 Middle St, Fairhope, AL 36532 Phone: 251.990.5778 Fax: 251.990.3716	Drawing Title BLDG A ELEVATOR LOCATION PLAN	Project Title UPGRADE ELEVATORS - BUILDINGS A, B, C, and D	Project Number 508-14-123
		Approved: Project Director	Location ATLANTA VAMC 1670 CLAIRMONT ROAD, DECATUR, GA 30033	Building Number S101
Revisions: 4/29/2017 10:37 PM	THESE DRAWINGS ARE NOT TO BE USED FOR CONSTRUCTION, BIDDING, RECORDATION, CONVEYANCE, SALES, OR AS THE BASIS FOR THE ISSUANCE OF A PERMIT.	Date 2017.05.01	Drawn M. STEFANO	Checked A. CROSBY
VA FORM 08-0231		Date 2017.05.01	Drawn M. STEFANO	Checked A. CROSBY

