



SEALS
© COPYRIGHT 2017 ROSENBLUM COE ARCHITECTS, INC.
THIS DRAWING HAS BEEN PREPARED BY ROSENBLUM COE ARCHITECTS, INC. FOR THE PROJECT AND IS THE PROPERTY OF ROSENBLUM COE ARCHITECTS, INC. NO PART OF THIS DOCUMENT MAY BE REPRODUCED OR TRANSMITTED IN ANY FORM OR BY ANY MEANS, ELECTRONIC OR MECHANICAL, INCLUDING PHOTOCOPYING, RECORDING, OR BY ANY INFORMATION STORAGE AND RETRIEVAL SYSTEM, WITHOUT THE WRITTEN PERMISSION OF ROSENBLUM COE ARCHITECTS, INC.

- NOTES
- EXISTING TRACK LIGHTS TO BE RELOCATED HERE. EXTEND EXISTING TRACK LIGHTS TO NEW LOCATION. CONFIRM EXACT LOCATION. RECONNECT TO EXISTING CONTROLS.
 - VERIFY DIMMER COMPATIBLE WITH LAMP TYPE SPECIFIED IN LAMP SCHEDULE ON SHEET E201.
 - FIXTURES IN THIS AREA ARE TO BE CONNECTED TO EXISTING 277V CIRCUIT IN THIS AREA.

GENERAL NOTES
1. SEE ARCHITECTURAL DRAWINGS FOR REFLECTED CEILING PLAN.

MUSC
MEDICAL UNIVERSITY
of SOUTH CAROLINA
PROJECT NUMBER: H51-50068
DHEC PROJECT NUMBER: 580145

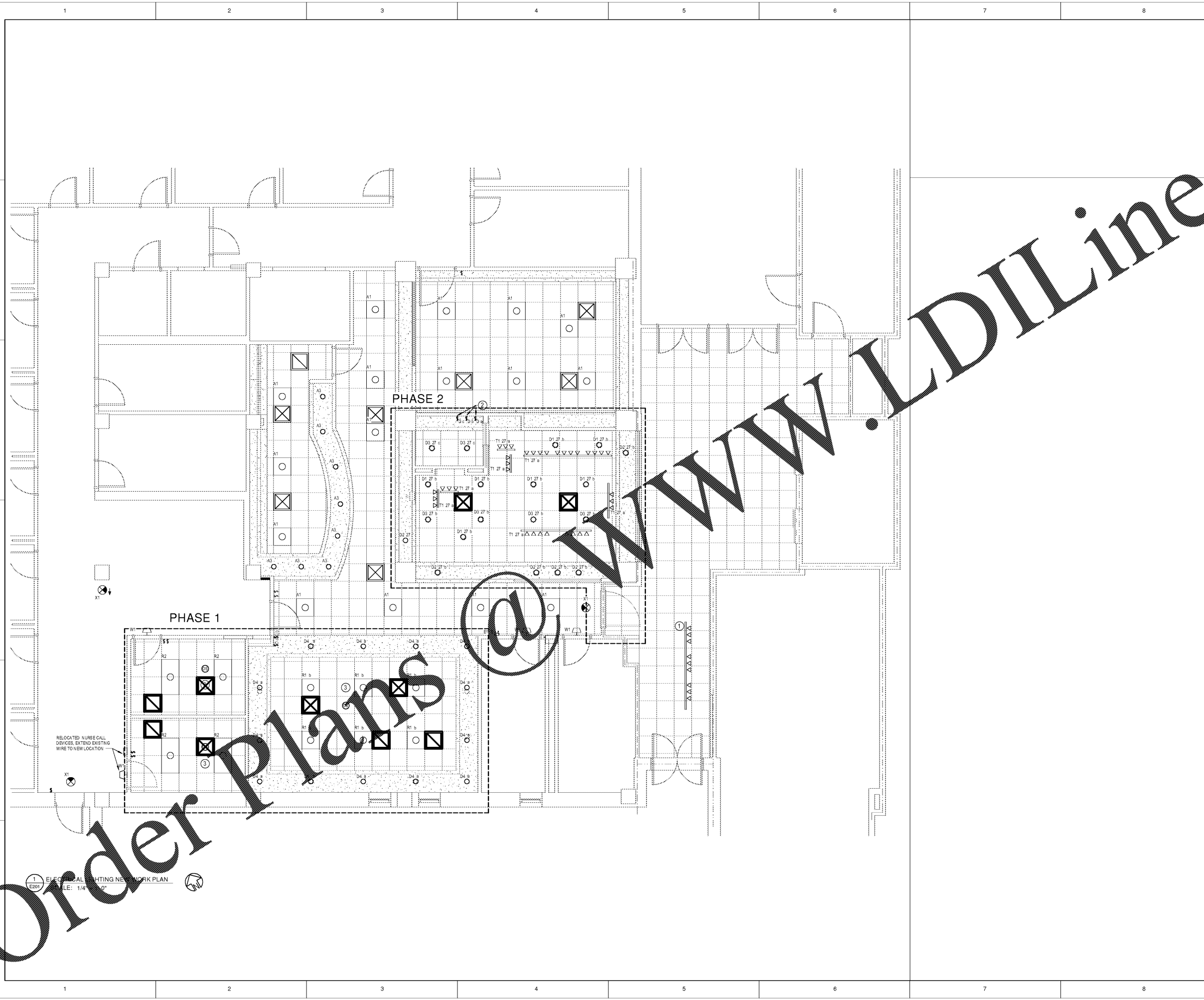
CONSTRUCTION DOCUMENTS

**STORM EYE INSTITUTE
OPTICAL SHOP
H51-50068**
167 ASHLEY AVE
CHARLESTON, SC 29425

**ROSENBLUM COE
ARCHITECTS,
INC.**
1643 MEANS STREET
CHARLESTON, SC 29412
843.577.6073

ELECTRICAL LIGHTING PLAN

SHEET NAME	
PROJECT NUMBER	17016
DRAWN BY	WSD
CHECKED BY	BAC
DATE	05/09/2018
SCALE	1/4" = 1'-0"
	E201



Order Plans

WWW.LDILine.com

1 ELECTRICAL LIGHTING NETWORK PLAN
SCALE: 1/4" = 1'-0"