



SEALS
© COPYRIGHT 2017 ROSENBLUM COE ARCHITECTS, INC.
THIS DRAWING HAS BEEN PREPARED BY ROSENBLUM COE ARCHITECTS, INC. FOR THE PROJECT AND IS THE PROPERTY OF ROSENBLUM COE ARCHITECTS, INC. NO PART OF THIS DOCUMENT MAY BE REPRODUCED OR TRANSMITTED IN ANY FORM OR BY ANY MEANS, ELECTRONIC OR MECHANICAL, INCLUDING PHOTOCOPYING, RECORDING, OR BY ANY INFORMATION STORAGE AND RETRIEVAL SYSTEM, WITHOUT THE WRITTEN PERMISSION OF ROSENBLUM COE ARCHITECTS, INC.

- NOTES
- 1. RECEPTACLES USED TO POWER CASEWORK. CONFIRM EXACT LOCATION WITH CONTRACTOR. RECEPTACLES TO BE SWITCHED BY NON-ELECTRICAL PERSONNEL.
 - 2. CONNECT TO EXISTING FIRE ALARM ANNUNCIATION CIRCUIT IN AREA.
 - 3. MOUNT DEVICES +4" ABOVE FINISHED FLOOR.

GENERAL NOTES

- 1. ALL CIRCUITS FED FROM PANEL 5_2 UNLESS OTHERWISE NOTED.

 **MUSC**
MEDICAL UNIVERSITY
of SOUTH CAROLINA
PROJECT NUMBER: H51-50068
DHEC PROJECT NUMBER: 580145

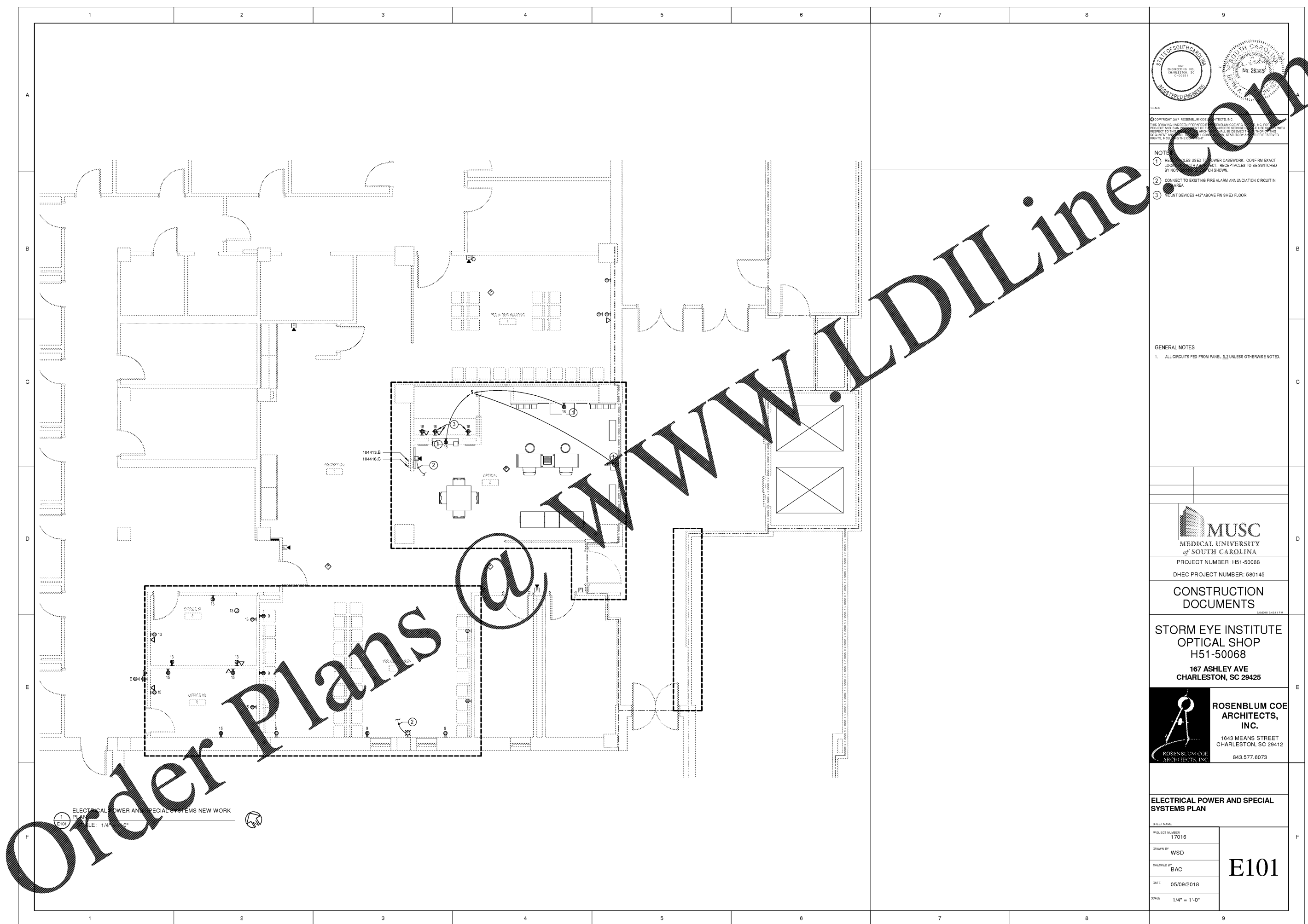
CONSTRUCTION DOCUMENTS

STORM EYE INSTITUTE
OPTICAL SHOP
H51-50068
167 ASHLEY AVE
CHARLESTON, SC 29425

 **ROSENBLUM COE ARCHITECTS, INC.**
1643 MEANS STREET
CHARLESTON, SC 29412
843.577.6073

ELECTRICAL POWER AND SPECIAL SYSTEMS PLAN

SHEET NAME	
PROJECT NUMBER	17016
DRAWN BY	WSD
CHECKED BY	BAC
DATE	05/09/2018
SCALE	1/4" = 1'-0"
E101	



Order Plans @ www.LDILine.com

ELECTRICAL POWER AND SPECIAL SYSTEMS NEW WORK
1 PLAN
SCALE: 1/4" = 1'-0"