



SEALS
© COPYRIGHT 2017 ROSENBLUM COE ARCHITECTS, INC.
THIS DRAWING HAS BEEN PREPARED BY ROSENBLUM COE ARCHITECTS, INC. FOR THE PROJECT AND IS THE PROPERTY OF ROSENBLUM COE ARCHITECTS, INC. NO PART OF THIS DOCUMENT MAY BE REPRODUCED OR TRANSMITTED IN ANY FORM OR BY ANY MEANS, ELECTRONIC OR MECHANICAL, INCLUDING PHOTOCOPYING, RECORDING, OR BY ANY INFORMATION STORAGE AND RETRIEVAL SYSTEM, WITHOUT THE WRITTEN PERMISSION OF ROSENBLUM COE ARCHITECTS, INC.

NOTE
1. TRACK LIGHTS TO BE RELOCATED. SEE SHEET ED01 FOR RELOCATED EXISTING CONTROLS.

GENERAL NOTES
1. CIRCUITS SERVING LIGHTING FIXTURES SHALL BE REUSED FOR NEW FIXTURES.
2. SEE ARCHITECTURAL PLANS FOR PHASING.

MUSC
MEDICAL UNIVERSITY
of SOUTH CAROLINA
PROJECT NUMBER: H51-50068
DHEC PROJECT NUMBER: 580145

CONSTRUCTION DOCUMENTS

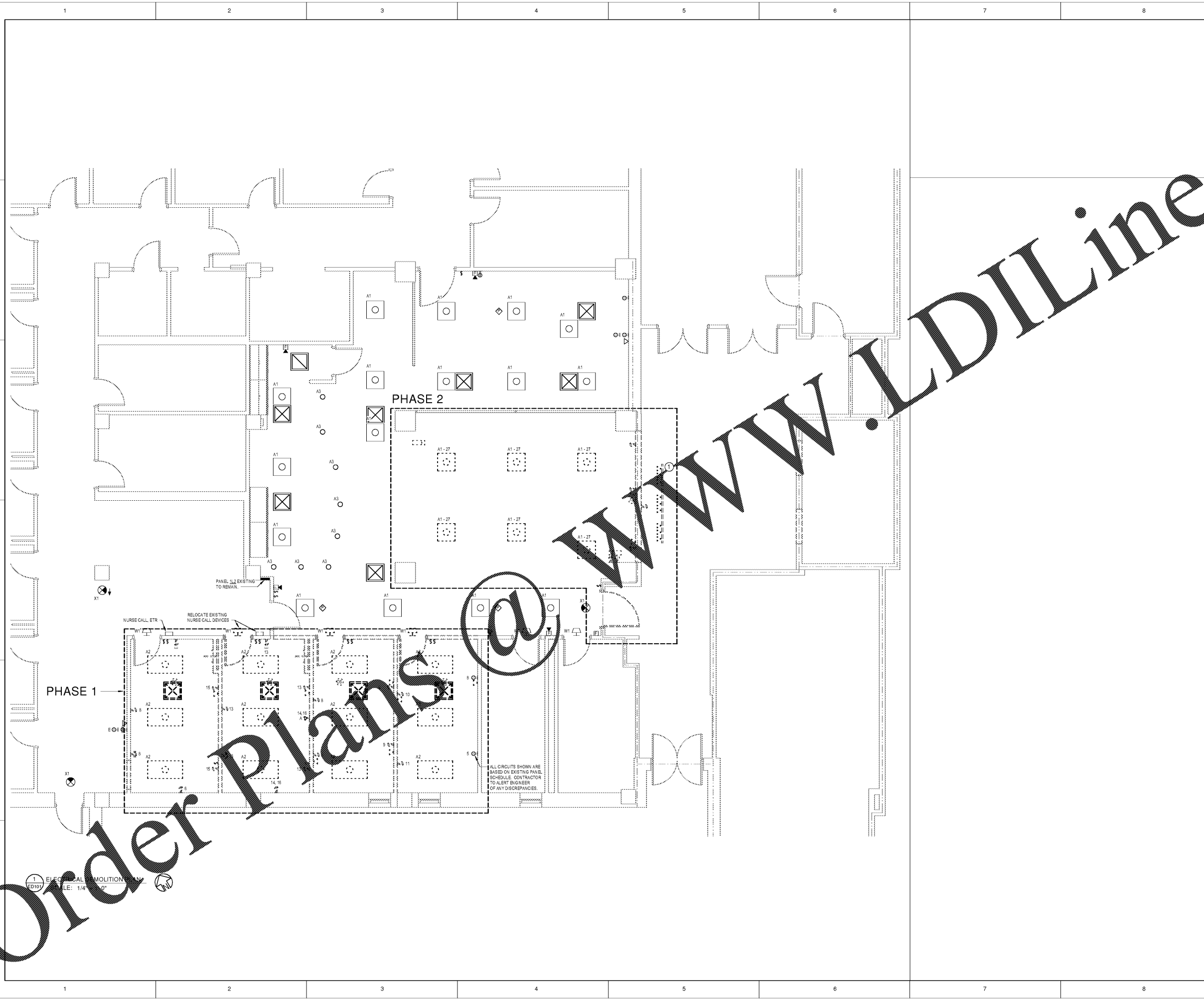
STORM EYE INSTITUTE
OPTICAL SHOP
H51-50068
167 ASHLEY AVE
CHARLESTON, SC 29425

ROSENBLUM COE
ARCHITECTS,
INC.
1643 MEANS STREET
CHARLESTON, SC 29412
843.577.6073

ELECTRICAL DEMOLITION PLAN

SHEET NAME	
PROJECT NUMBER	17016
DRAWN BY	WSD
CHECKED BY	BAC
DATE	05/09/2018
SCALE	1/4" = 1'-0"

ED101



Order Plans @ www.LDILine.com

1 ELECTRICAL DEMOLITION PLAN
ED101
SCALE: 1/4" = 1'-0"