



SEALS
 COPYRIGHT 2017 ROSENBLUM COE ARCHITECTS, INC.
 THIS DRAWING HAS BEEN PREPARED BY ROSENBLUM COE ARCHITECTS, INC. ENGINEERS AND ARCHITECTS. ALL RIGHTS ARE RESERVED. NO PART OF THIS DOCUMENT MAY BE REPRODUCED OR TRANSMITTED IN ANY FORM OR BY ANY MEANS, ELECTRONIC OR MECHANICAL, WITHOUT PERMISSION IN WRITING FROM ROSENBLUM COE ARCHITECTS, INC.

- NOTES
1. PROVIDE MANUAL BALANCING DAMPER IN VERTICAL DUCT DOWN TO AIR DEVICE BALANCE TO AIRFLOW INDICATED.
 2. TOP BOTTOM BRANCH WORK, PROVIDE MANUAL BALANCING DAMPER IN VERTICAL DUCT DOWN TO AIR DEVICE BALANCE TO AIRFLOW INDICATED.
 3. PLACE DIFFUSER IN NEW CEILING GRID LOCATION.
 4. RELOCATED DIFFUSER, BALANCE TO AIRFLOW INDICATED.
 5. RELOCATE ONE PNEUMATIC THERMOSTAT TO LOCATION INDICATED. SET BID PNEUMATIC TUBING TO THE TWO EXISTING VAV BOXES INTO RELOCATED THERMOSTAT.
 6. INSTALL NEW DDC THERMOSTAT.

- GENERAL NOTES
1. REFER TO M001 FOR GENERAL NOTES.
 2. BALANCE ALL AIR DEVICES AND VAV BOXES IN THE SCOPE OF WORK AS INDICATED.
 3. ALL NEW BRANCH PIPING SHALL BE 3/4", UNLESS OTHERWISE INDICATED.

MUSC
 MEDICAL UNIVERSITY
 OF SOUTH CAROLINA
 PROJECT NUMBER: H51-50068
 DHEC PROJECT NUMBER: 580145

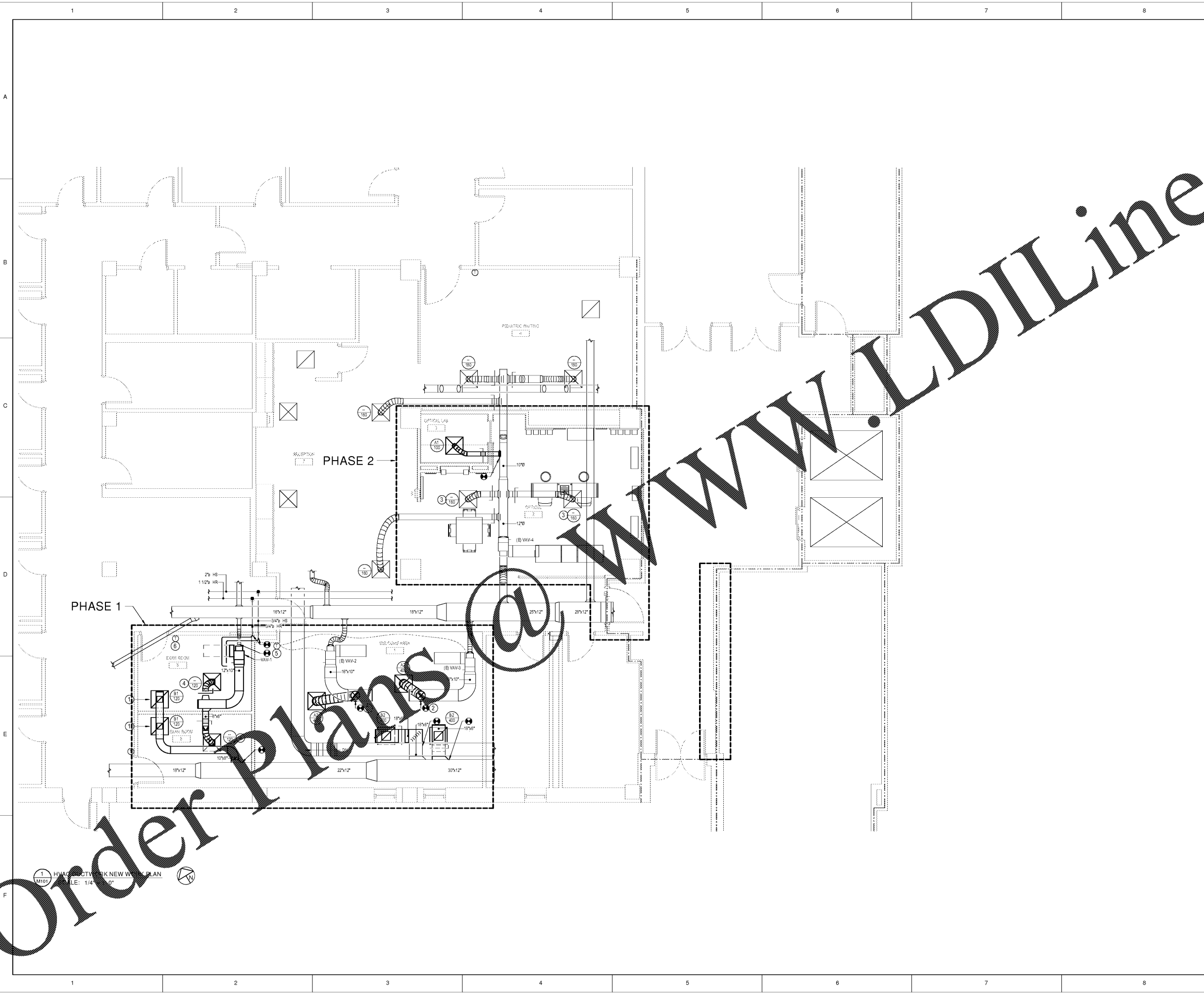
CONSTRUCTION DOCUMENTS

**STORM EYE INSTITUTE
 OPTICAL SHOP
 H51-50068
 167 ASHLEY AVE
 CHARLESTON, SC 29425**

**ROSENBLUM COE
 ARCHITECTS,
 INC.**
 1643 MEANS STREET
 CHARLESTON, SC 29412
 843.577.6073

MECHANICAL FIRST FLOOR PLAN

SHEET NAME		M101
PROJECT NUMBER	17016	
DRAWN BY	TSN	
CHECKED BY	CRB	
DATE	05/09/2018	
SCALE	1/4" = 1'-0"	



Order Plans

1 HVAC DUCTWORK NEW WORK PLAN
 M101
 SCALE: 1/4" = 1'-0"