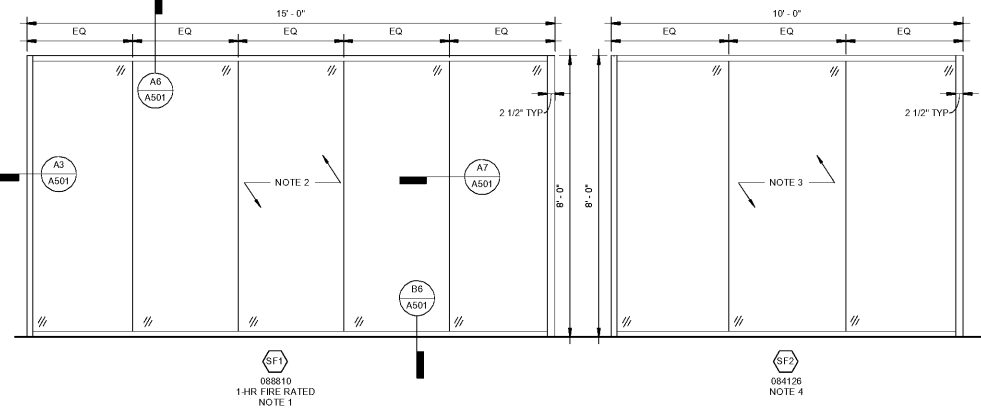
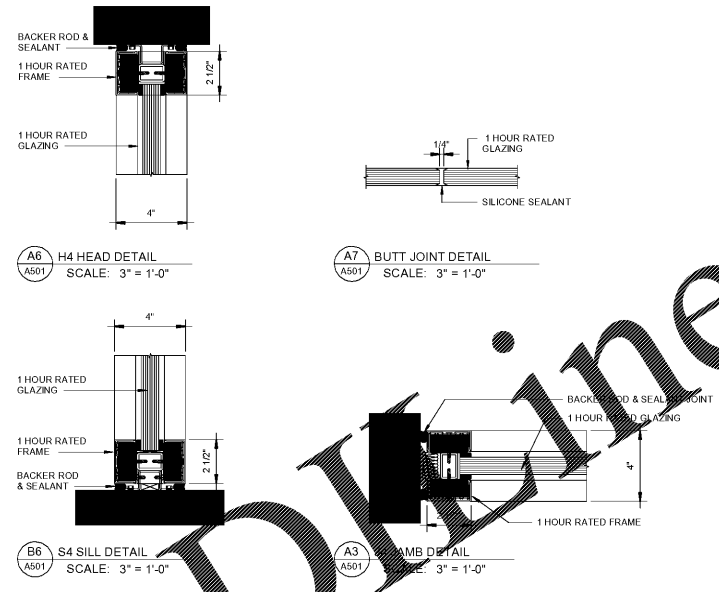


**B1** WALL TYPE A - 3 5/8" MTL STUD / GWB  
SCALE: 1 1/2" = 1'-0"

**B2** WALL TYPE B - 6" MTL STUD / GWB  
SCALE: 1 1/2" = 1'-0"



**B3** STOREFRONT TYPES  
SCALE: 1/2" = 1'-0"



**A6** H4 HEAD DETAIL  
SCALE: 3" = 1'-0"

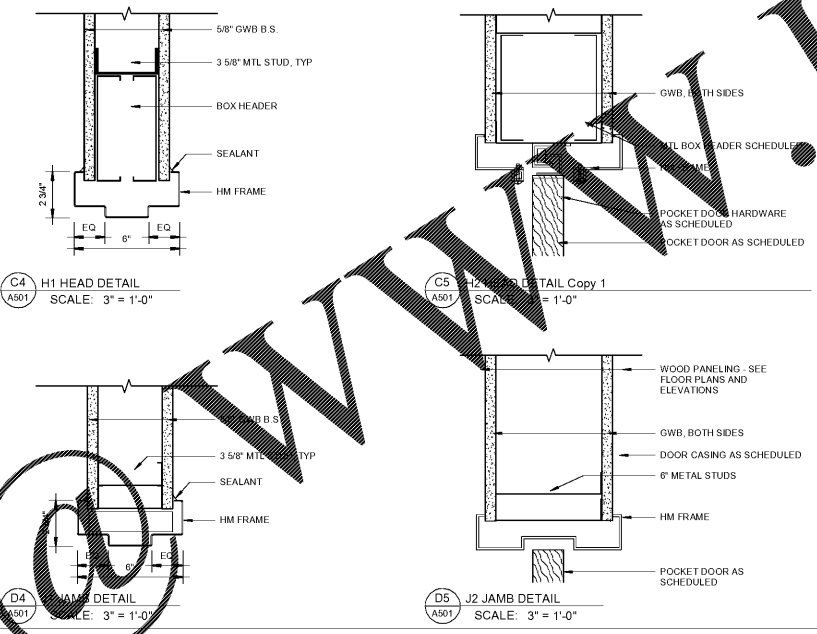
**A7** BUTT JOINT DETAIL  
SCALE: 3" = 1'-0"

**B6** S4 SILL DETAIL  
SCALE: 3" = 1'-0"

**A3** JAMB DETAIL  
SCALE: 3" = 1'-0"

Room Finish Schedule								
Room Number	Room Name	Floor	Base	Wall	Ceiling	Ceiling Height	Comments	
1	WELCMBE AREA	LVT	6" RUBBER	EXST'G / GWB-PAINT	ACT	9' - 0"	FS 1	
2	OPTICAL	EXST'G LVT	6" RUBBER	EXST'G / GWB-PAINT	ACT	9' - 0"	FS 1	
3	OPTICAL LAB	EXST'G LVT	6" RUBBER	EXST'G / GWB-PAINT	ACT	9' - 0"	FS 1	
5	EXAM ROOM	LVT	6" RUBBER	EXST'G / GWB-PAINT	ACT	8' - 8"	FS 1	
6	EXAM ROOM	LVT	6" RUBBER	EXST'G / GWB-PAINT	ACT	8' - 8"	FS 1	

**FINISH SCHEDULE NOTES:**  
 FS 1. RUBBER BASE TO MATCH EXISTING BASE.  
 FS 2. NO NEW FINISHES THIS SPACE. LIMIT ACCESS THROUGH SPACE TO MIN. REQUIRED.

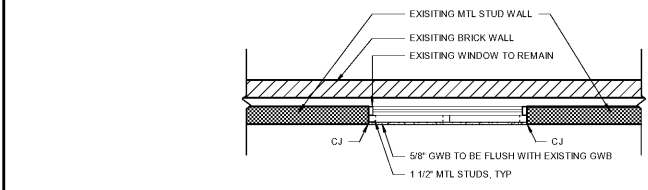


**C4** H1 HEAD DETAIL  
SCALE: 3" = 1'-0"

**C5** H2 HEAD DETAIL Copy 1  
SCALE: 3" = 1'-0"

**D4** J1 JAMB DETAIL  
SCALE: 3" = 1'-0"

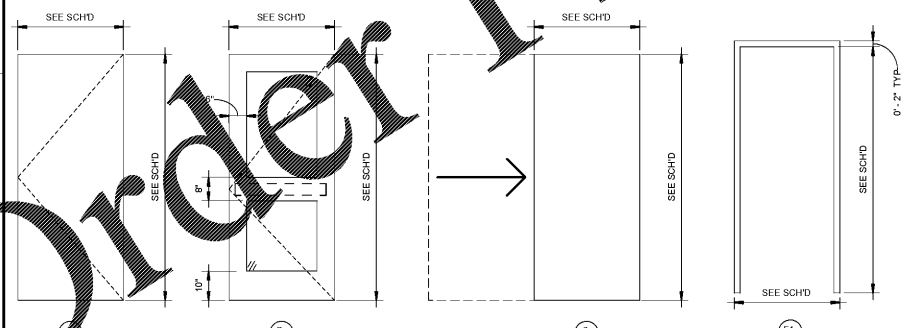
**D5** J2 JAMB DETAIL  
SCALE: 3" = 1'-0"



**D1** GWB OVER EXIST'G WINDOW  
SCALE: 3/4" = 1'-0"

Door Schedule														
Door Number	Type	Room	Door				Frame						Comments	
			Width	Height	Thickness	Material	Finish	Fire Rating	Type	Material	Finish	Jamb		Head
1	A	6	3'-0"	7'-0"	0' - 1 3/4"	WOOD	STAIN	N/A	F1	HM	PAINT	J1	H1	
2	B	7	4'-0"	7'-0"	0' - 1 3/4"	WOOD/GLASS	CLEAR	20 min	F1	HM	PAINT	J1	H1	
3	C	2	2'-6"	7'-0"	0' - 1 3/4"	WOOD	STAIN	NA		HM	PAINT	J2		

**DOOR SCHEDULE NOTES:**  
 DS 1 - NEW FRAME IN EXISTING WALL. FIELD VERIFY THROAT WIDTH

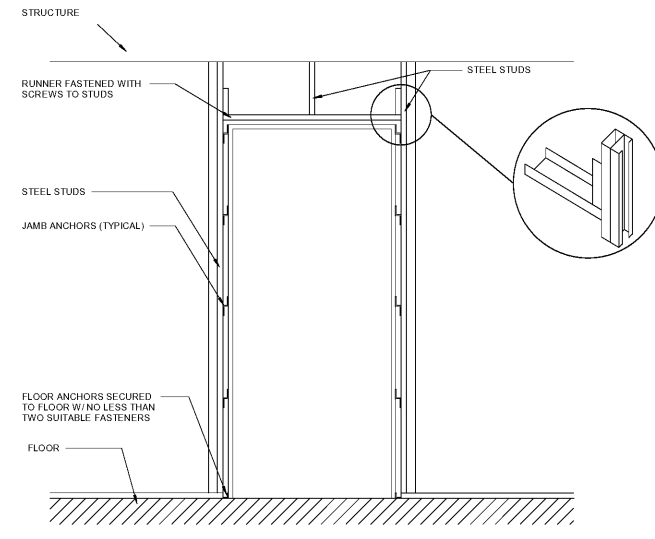


**F5** TYPICAL FRAME ELEVATION/ DETAIL  
SCALE: 3/4" = 1'-0"

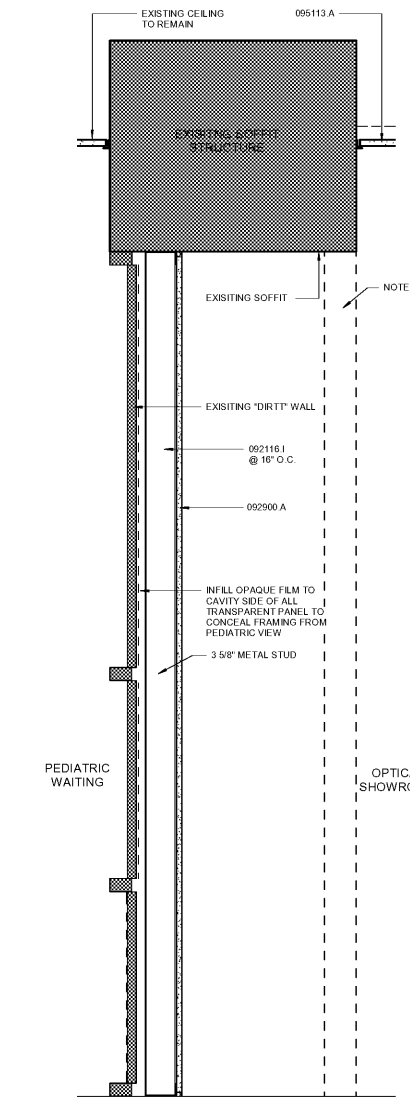
**F1** 081113 ALUM FRAME

- ALL DOORS MUST OPEN TO A FULL 90 DEGREES (OR 180 DEGREES WHERE INDICATED).
- MAINTAIN A 4" MINIMUM CLEARANCE (UNLESS OTHERWISE SHOWN IN PLAN) BETWEEN DOOR JAMB AND ADJACENT PARTITION.
- MAINTAIN CONTINUITY OF SMOKE AND RATED PARTITIONS AT FRAMES.
- CONTRACTOR TO COORDINATE DOOR VISION PANEL CUT-OUT WITH HARDWARE CUTOUPS.
- REFER TO SPECIFICATIONS FOR HARDWARE SET TYPES.
- ALL RATED DOORS AND SMOKE DOORS SHALL BE POSITIVE LATCHING.
- MANUFACTURER'S INSTALLATION INSTRUCTIONS SHALL BE AVAILABLE ON THE JOB SITE FOR ALL RATED DOOR ASSEMBLIES.
- HAND ACTIVATED DOOR OPENING HARDWARE SHALL BE CENTERED BETWEEN 30 INCHES AND 44 INCHES ABOVE THE FLOOR.
- FIELD VERIFY EXISTING WALL FOR THROAT DIMENSION OF FRAME WHERE A NEW DOOR IS INSTALLED IN AN EXISTING WALL. ALSO, FIELD VERIFY DIMENSIONS WHERE A NEW WALL IS TO ALIGN WITH THE EXISTING WALL.
- REFER TO SPECIFICATIONS FOR GLAZING TYPES.

**NOTES:**  
 1. LOCATE JAMB ANCHOR ABOVE HINGE REINFORCEMENTS AND JUST BELOW TOP REINFORCEMENT CLIPS ON STRIKE SIDE TO OCCUR DIRECTLY OPPOSITE HINGE SIDE ANCHORS. (POSITION CONCRETE AND MASONRY ANCHORS SIMILARLY.)  
 2. FOR DOUBLE DOORS 5'-0" OR WIDER, PROVIDE ADDITIONAL ANCHORS AT HEAD 8" FROM JAMBS AND 24" O.C. THEREAFTER.



**F5** TYPICAL FRAME ELEVATION/ DETAIL  
SCALE: 3/4" = 1'-0"



**F7** WALL SECTION AT DIRTT WALL  
SCALE: 1 1/2" = 1'-0"



THIS DRAWING HAS BEEN PREPARED BY ROSENBLUM COE ARCHITECTS, INC. FOR THE PROJECT AND IS NOT TO BE REPRODUCED OR TRANSMITTED IN ANY FORM OR BY ANY MEANS, ELECTRONIC OR MECHANICAL, INCLUDING PHOTOCOPYING, RECORDING, OR BY ANY INFORMATION STORAGE AND RETRIEVAL SYSTEM, WITHOUT THE WRITTEN PERMISSION OF ROSENBLUM COE ARCHITECTS, INC.

- NOTE:**
- BASIS OF DESIGN FOR RATED STOREFRONT SYSTEM TO BE SUPERSEDED BY:
  - RESISTIVE BUTT-GLAZED TEMPERED GLASS ANCHORED FRAME.
  - 3/8" TEMPERED GLASS (888000) WITH STRUCTURAL SILICONE SEALANT.
  - MATCH RATED STOREFRONT IN APPEARANCE.
  - SEE FLOOR PLAN FOR LOCATION OF NEW WALL.

Keynote Legend	
Key Value	Keynote Text
078100.A	APPLIED FIREPROFFING
079200.A	JOINT SEALANTS
081113.A	HOLLOW METAL FRAMES
081416.A	FLUSH WOOD DOOR
084126.A	BUTT GLAZED STOREFRONT SYSTEM
088810.A	FIRE RATED GLASS AND FRAMING SYSTEM
092116.J	NON-STRUCTURAL METAL FRAMING
092900.A	GYPSON BOARD
092900.B	SOUND ATTENUATION BATTS
095113.A	ACOUSTICAL PANEL CEILINGS
095113.B	CEILING GRID
096513.B	RESILIENT BASE
099123.A	INTERIOR PAINTING
102600.A	BUMPER GUARD
104413.B	FIRE EXTINGUISHER CABINET
104416.C	FIRE EXTINGUISHER
123661.A	SOLID SURFACING COUNTERTOPS
260000.A	INTERIOR LIGHTING - SEE 'E' SHEETS

**MUSC**  
 MEDICAL UNIVERSITY  
 of SOUTH CAROLINA  
 PROJECT NUMBER: H51-50068  
 DHEC PROJECT NUMBER: 580145

**CONSTRUCTION DOCUMENTS**

**STORM EYE INSTITUTE**  
 OPTICAL SHOP  
 H51-50068  
 167 ASHLEY AVE  
 CHARLESTON, SC 29425

**ROSENBLUM COE ARCHITECTS, INC.**  
 1643 MEANS STREET  
 CHARLESTON, SC 29412  
 843.577.6073

DETAILS	
SHEET NAME	A501
PROJECT NUMBER	17016
DRAWN BY	RML
CHECKED BY	SHC
DATE	05/09/2018
SCALE	As Indicated