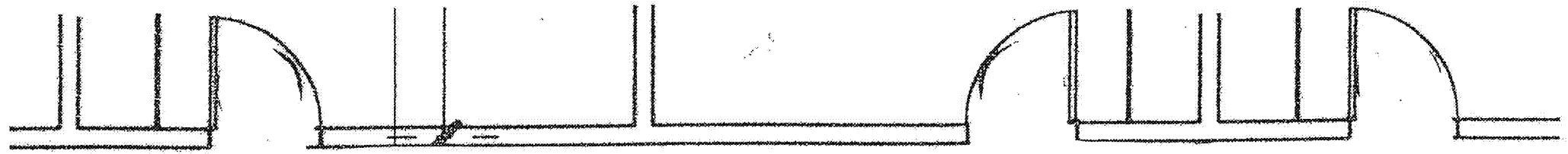
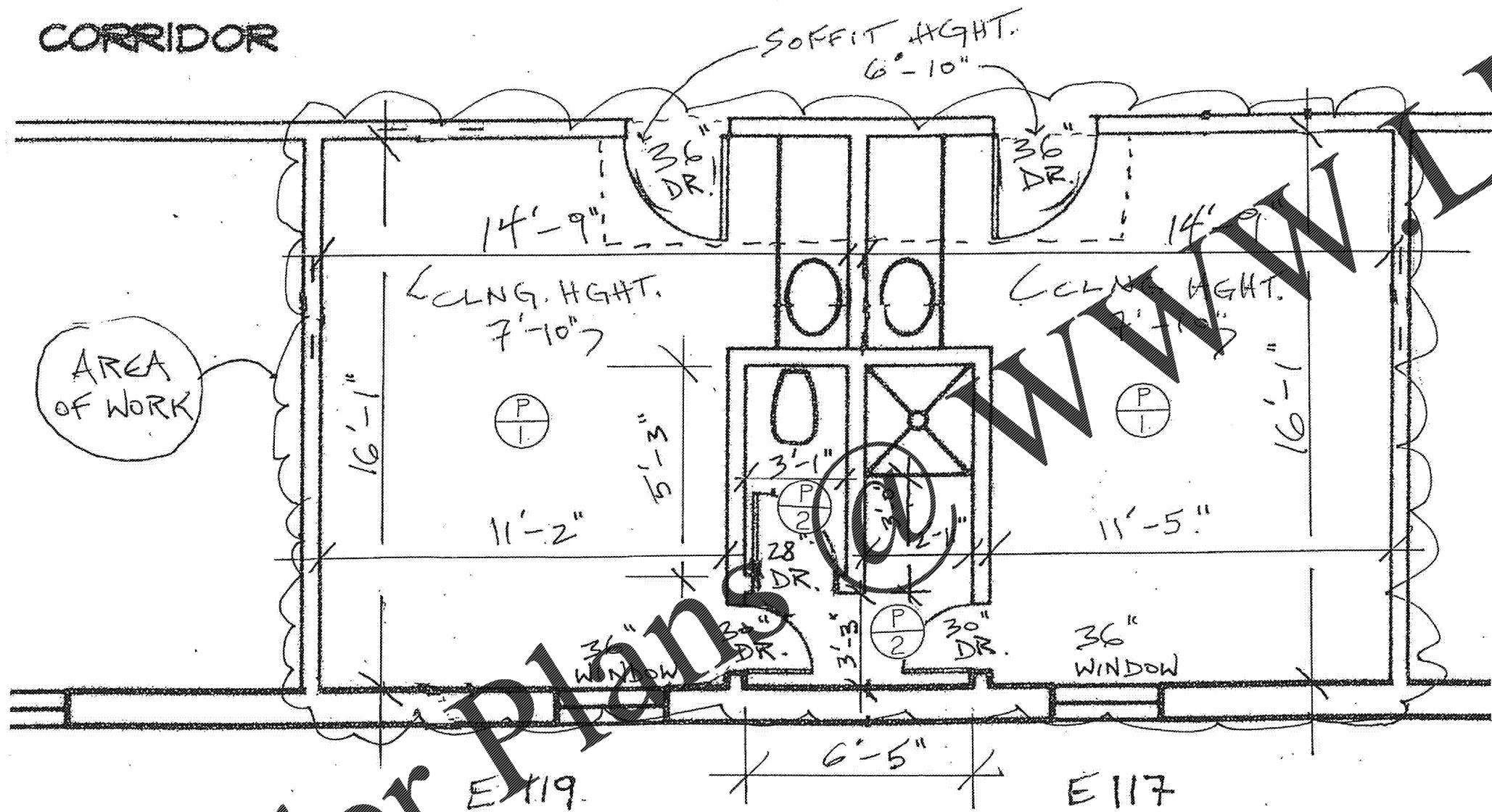


SNOW ISLAND HALL

KEY PLAN



CORRIDOR



MEMO NOTES:

1. ALL WORK TO BE COORDINATED WITH FMU FACILITIES STAFF
2. SEE SPECIFICATIONS & SCHEDULE
3. MOVE FURNITURE & WALL HANGINGS LEFT IN SPACES AS REQUIRED TO COMPLETE WORK AND COVER/ PROTECT & INSTALL BACK TO ORIGINAL LOCATIONS WHEN COMPLETE
4. CONTRACTOR TO CONFIRM WITH FMU ON SITE RE: OWNER PROVIDED PRIMER & PAINT.
5. CONTRACTOR TO VERIFY ALL DIMENSIONS

FINISH NOTES:

1. ALL WORK TO BE COORDINATED WITH FMU FACILITIES STAFF
2. SEE SPECIFICATIONS & SCHEDULE
3. MOVE FURNITURE & WALL HANGINGS LEFT IN SPACES AS REQUIRED TO COMPLETE WORK AND COVER/ PROTECT & INSTALL BACK TO ORIGINAL LOCATIONS WHEN COMPLETE
4. CONTRACTOR TO CONFIRM WITH FMU ON SITE RE: OWNER PROVIDED PRIMER & PAINT.
5. CONTRACTOR TO VERIFY ALL DIMENSIONS

SYMBOL LEGEND:

(P) DORM ROOMS PAINT FINISH:
WALLS, DOORS & FRAMES, WINDOW FRAMES,
& ALL TRIM PAINT FINISH (EXCEPT VINYL BASE)

1 COAT OF OWNER PROVIDED PRIMER:
MANUF - SHERWIN WILLIAMS
EXTREME BLOCK
COLOR - WHITE B49 W00600
FINISH - N/A

2 COATS OF OWNER PROVIDED PAINT:
MANUF - SHERWIN WILLIAMS
PRO INDUSTRIAL MULTI-SURFACE ACRYLIC COATING
COLOR - FMU DORM COLOR B66 W 1501 6508-67500
FINISH - GLOSS

(P/2) BATHROOMS (INCLUDING CORRIDOR) PAINT FINISH:
WALLS, DOORS & FRAMES, WINDOW FRAMES,
& ALL TRIM PAINT FINISH (EXCEPT VINYL BASE & SHOWER UNIT)

1 COAT OF OWNER PROVIDED PRIMER:
MANUF - SHERWIN WILLIAMS
KEM KROMIK UNIVERSAL
COLOR - OFF WHITE B50 WZ 1 6401-15325
FINISH - N/A

2 COATS OF OWNER PROVIDED PAINT:
MANUF - SHERWIN WILLIAMS
PRO INDUSTRIAL PRE-CATALYZED WATERBASED
EPOXY SEMI-GLOSS
COLOR - FMU RES HALL BATHROOMS
K46 W 151 6500-44795
FINISH - SEMI-GLOSS

FRANCIS MARION UNIVERSITY
DORM ROOMS F217/219, E117/119, A105/107 & C309/311
INTERIOR FINISHES PROJECT
IDC REPRESENTATIVE PROJECT H18-N073-PD
FLORENCE, SOUTH CAROLINA, 29506

SHEET TITLE: FINISH PLAN

SCALE: GRAPHIC

DRAWN BY: FMU

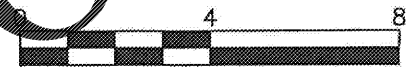
DATE: 3/9/18

F-2

2 OF 4

1 PARTIAL 1ST FL PLAN - SNOW ISLAND "E"

F2 SCALE:



Order Plans