

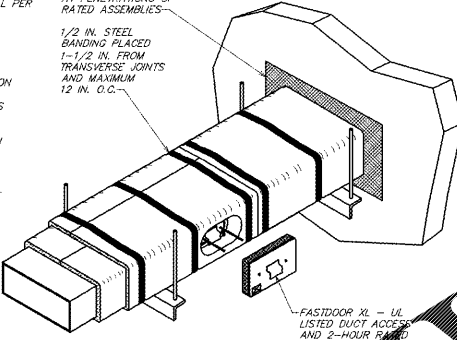
SYMBOLS

HEATING-VENTILATING-AIR CONDITIONING			
SYMBOL	DESCRIPTION	SYMBOL	DESCRIPTION
[Symbol]	STEAM (WATER PRESSURE)	[Symbol]	AUTOMATIC CONTROL VALVE
[Symbol]	STEAM (NON-WATER PRESSURE)	[Symbol]	PRESSURE REGULATING VALVE (PRV)
[Symbol]	CONDENSATE (WATER PRESSURE)	[Symbol]	SAFETY RELIEF VALVE
[Symbol]	CONDENSATE (NON-WATER PRESSURE)	[Symbol]	BLOW OFF VALVE
[Symbol]	HOT WATER SUPPLY (HEATING)	[Symbol]	F AND T TRAP (FAN)
[Symbol]	HOT WATER RETURN (HEATING)	[Symbol]	THEMATIC TRAP
[Symbol]	ETHYLENE GLYCOL SUPPLY	[Symbol]	STATIC PRESSURE
[Symbol]	ETHYLENE GLYCOL RETURN	[Symbol]	ORIFICE FLOW CONTROL VALVE
[Symbol]	CHILLED WATER SUPPLY	[Symbol]	MO VALVE (SHAMANT PANEL)
[Symbol]	CHILLED WATER RETURN	[Symbol]	AIR CLEANER
[Symbol]	COOLANT SUPPLY	[Symbol]	AUTOMATIC BALANCING VALVE
[Symbol]	COOLANT RETURN	[Symbol]	STRAINING VALVE (REFRIGERANT)
[Symbol]	FUELS OIL SUPPLY	[Symbol]	THEMATIC PRESSURE RELIEF VALVE (TRPV)
[Symbol]	FUELS OIL RETURN	[Symbol]	BACK PRESSURE VALVE
[Symbol]	FUELS OIL VENT	[Symbol]	SHIRT GLASS
[Symbol]	GAS LINE	[Symbol]	FRESH AIR INLET
[Symbol]	REFRIGERANT LIQUID LINE	[Symbol]	REFRIGERANT LIQUID INLET
[Symbol]	REFRIGERANT SUCCTION LINE	[Symbol]	REFRIGERANT LIQUID RETURN
[Symbol]	REFRIGERANT GAS DISCHARGE LINE	[Symbol]	REFRIGERANT GAS DISCHARGE INLET
[Symbol]	CONDENSATE WATER	[Symbol]	CABINET UNIT HEATER & MATH
[Symbol]	CONDENSATE WATER RETURN	[Symbol]	TYPE TUBE, MAKE AND CAPACITY
[Symbol]	DRYER BLOW OFF	[Symbol]	CONVEYOR AND MAKE
[Symbol]	EXHAUST STEAM	[Symbol]	UNIT VENTILATOR AND MAKE
[Symbol]	CONCENTRIC REDUCER	[Symbol]	CONCENTRIC REDUCER
[Symbol]	ECONOMIC REDUCER	[Symbol]	ECONOMIC REDUCER
[Symbol]	UNION	[Symbol]	UNION
[Symbol]	SHOWER	[Symbol]	SHOWER
[Symbol]	EXPANSION JOINT	[Symbol]	EXPANSION JOINT
[Symbol]	THERMOSTAT	[Symbol]	THERMOSTAT
[Symbol]	PRESSURE GAUGE	[Symbol]	PRESSURE GAUGE

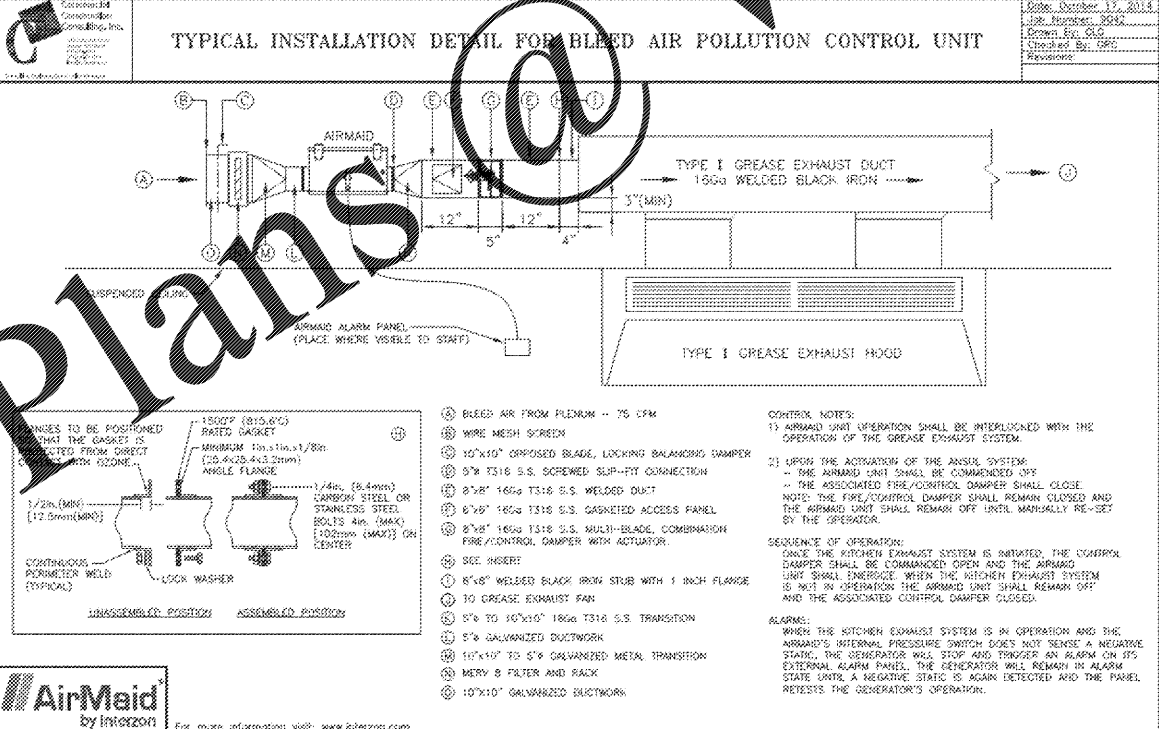
THERMOSTAT SCHEDULE

MARK	SERVICE & LOCATION	OCCUPIED		UNOCCUPIED		REMARKS
		COOLING	HEATING	COOLING	HEATING	
RTU-1	LOUNGE/BAR	75	70	78	60	
RTU-2	DINING	75	70	78	60	
RTU-3	KITCHEN	78	68	78	60	
MAU-1	HOOD-1 AND HOOD-2	78	68			
MAU-2	HOOD-3	78	68			
MAU-3	HOOD-4	78	68			
AC-1	PATIO	78	68	78	60	
AC-2	PATIO	78	68	78	60	

- #### NOTES:
- THERMAL CERAMICS FIREMASTER FASTWRAP XL IS TESTED TO ASTM E2336 AND UL LISTED PER HMK1.G18 TO PROVIDE ZERO CLEARANCE TO COMBUSTIBLES AND TO PROVIDE A 1 OR 2 HOUR EXPOSURE THROUGH PENETRATIONS FIRESTOP SYSTEMS ARE TESTED IN ACCORDANCE WITH ASTM E 814 (UL 1479). ICC-ES APPROVAL PER REPORT ESR 2213 OR ESR 2823.
 - COMPLIANT TO THE FOLLOWING CODES:
 - NFPA 98
 - INTERNATIONAL MECHANICAL CODES
 - UNIFORM MECHANICAL CODE
 - CALIFORNIA MECHANICAL CODE
 - INSULATION APPLIED IN TWO LAYERS WITH TIGHT COMPRESSION JOINT ON BOTH LAYERS AT ALL JOINTS.
 - MINIMUM 16 GAUGE CARBON STEEL (OR 18 GAUGE STAINLESS STEEL) RECTANGULAR OR ROUND GREASE EXHAUST DUCT.
 - INSTALL UL LISTED AND LIQUID TIGHT THERMAL CERAMICS FASTDOOR XL ACCESS DOORS AT ALL CHANGES IN DIRECTION AND AT MINIMUM EVERY 20 FT ON HORIZONTAL RUNS.
 - SUPPORT HANGER SYSTEMS DO NOT NEED TO BE RAPPED PROVIDED THE HANGER RODS ARE MINIMUM OF 3/8" IN DIAMETER AND SUPPORTS ARE MINIMUM 2 2/3" X 1/8" IN STEEL ANGLE OR SMACNA EQUIVALENT SUPPORT SYSTEM.
 - THERMAL CERAMICS DUCT WRAP SHALL BE INSTALLED DIRECTLY ONTO THE DUCT AND APPLIED FROM THE HOOD CONNECTION TO THE CONNECTION OF THE FAN.
 - THERMAL CERAMICS DUCT ENCLOSURE SYSTEM SHALL BE INSTALLED IN STRICT ACCORDANCE WITH MANUFACTURERS INSTRUCTIONS AND UL LISTINGS.



1 FIREMASTER FASTWRAP XL DETAIL
SCALE: NONE



2 AIRMAID POLLUTION CONTROL INSTALLATION DETAIL
SCALE: NONE

ROOF TOP UNITS (BY LANDLORD)

MARK	OLE CAP. (MBH)	COMP. TONS	HPS CAP. (MBH)	CFM	EXT. S.P. (IN. H2O)	SONES	MOTOR DATA	RPM	MFR.	REMARKS
							HP VOLTS PH CYC.			
RTU-1	119.7	132.5	12.5	1012	256.0	30.0	0.6 115 1	60	LOREN COOK	ACED-80C150H
RTU-2	68.63	92.0	7.5	754	200.0	16.0	0.6 115 1	60	LOREN COOK	ACED-80C150H
RTU-3	68.63	92.0	7.5	754	200.0	16.0	0.6 115 1	60	LOREN COOK	ACED-80C150H
RTU-4	68.63	92.0	7.5	754	200.0	16.0	0.6 115 1	60	LOREN COOK	ACED-80C150H
RTU-5	68.63	92.0	7.5	754	200.0	16.0	0.6 115 1	60	LOREN COOK	ACED-80C150H

EXHAUST FANS

MARK	LOCATION	SERVICE	CFM	EXT. S.P. (IN. H2O)	SONES	MOTOR DATA			RPM	MFR.	REMARKS
						HP	VOLTS	PH			
EF-6	ROOF	RESTROOMS	400	0.5	8.0	1/8	115	1	60	LOREN COOK	ACED-80C150H

UNITS ARE PROVIDED BY THE OWNER. CONTACT McNAMARA & COMPANY - RICK THOMAS AT (704) 243-3811 FOR LIST OF OWNER PROVIDED HVAC EQUIPMENT.
NOTES:
1. PROVIDE SOLID STATE SPEED CONTROL.
2. PROVIDE MINIMUM 14" HEIGHT ROOF CURB.

DIFFUSERS, GRILLES AND REGISTERS

MARK	SERVICE	LOCATION	TYPE	MANUFACTURE	CATALOG NUMBER	REMARKS
D-1	SUPPLY	CEILING	AC TILE	METALAIR	5700-1-24x24-01 BDS	SEE PLAN FOR NECK SIZE
D-2	SUPPLY	DUCT	N/A	METALAIR	4004PCF X X [2]	SEE PLAN FOR NECK SIZE
D-3	SUPPLY	CEILING	TILE	METALAIR	7500R-6-AL X 24x24-01 BDS	SEE PLAN FOR NECK SIZE
D-4	SUPPLY	CEILING	TILE	METALAIR	5700-1-AL X 24x24-01 BDS	SEE PLAN FOR NECK SIZE
D-5	SUPPLY	WALL	N/A	METALAIR	4004-1 X X 01 OBD [2]	SEE PLAN FOR NECK SIZE
D-6	SUPPLY	DUCT	N/A	METALAIR	5700-1 X 12x12-01 BDS	SEE PLAN FOR NECK SIZE
D-7	SUPPLY	DUCT	N/A	METALAIR	5700-1 X 12x12-01 BDS	SEE PLAN FOR NECK SIZE
D-8	RETURN	CEILING	AC TILE	METALAIR	RHE-1 X X 01 [1]	SEE PLAN FOR NECK SIZE
D-9	EXHAUST	CEILING	AC TILE	METALAIR	RHE-1 X X 01 [1]	SEE PLAN FOR NECK SIZE
D-10	RETURN	CEILING	GYP. BD.	METALAIR	RHE-1 X X 01 [1]	SEE PLAN FOR NECK SIZE
D-11	EXHAUST	WALL	N/A	METALAIR	RHE-1 X X 01 [1]	SEE PLAN FOR NECK SIZE

UNITS ARE PROVIDED BY THE OWNER. CONTACT McNAMARA & COMPANY - RICK THOMAS AT (704) 243-3811 FOR LIST OF OWNER PROVIDED HVAC EQUIPMENT.
NOTES:
1. PROVIDE 1/2" X 1/2" X 1" CORE.
2. COORDINATE DIFFUSER/GRILLE PAINT COLOR IN FIELD WITH ARCHITECT AND OWNER.

CIRCULATION FANS

MARK	LOCATION	SERVICE	CFM	EXT. S.P. (IN. H2O)	SONES	MOTOR DATA			RPM	MFR.	REMARKS	
						HP	VOLTS	PH	CYC.			
CF-1	SUP. RM STRUCTURE	MECH. RM.	400	0.475	3.0	150(W)	120	1	60	1400	LOREN COOK	GC-622

UNITS ARE PROVIDED BY THE OWNER. CONTACT McNAMARA & COMPANY - RICK THOMAS AT (704) 243-3811 FOR LIST OF OWNER PROVIDED HVAC EQUIPMENT.
NOTES:
1. PROVIDE SOLID STATE SPEED CONTROL.
2. FAN SHALL OPERATE 24/7.
3. PROVIDE WITH BACKDRAFT DAMPER.

FANCOIL / AIR SOURCE HEAT PUMP

MARK	TOTAL COOLING (MBH)	REF. TYPE	HEATING CAPACITY		CFM	ELECTRICAL			MANUFACTURER / MODEL NUMBER	
			ELECT. KW	HEATPUMP MBH		EXT. S.P. (IN. H2O)	MCA	VOLTS		PH
AC-1	NA	R410A	-	-	-	-	-	-	MITSUBISHI / PLA-A24BA	
COND-1	24.0	R410A	NA	28.0 @ 47' F	NA	NA	18	208	1	MITSUBISHI / PUZ-A24NH
AC-2	NA	R410A	-	-	-	-	-	-	MITSUBISHI / PLA-A30AA	
COND-2	30.0	R410A	NA	32.0 @ 47' F	NA	NA	25	208	1	MITSUBISHI / PUZ-A30NH

UNITS ARE PROVIDED BY THE OWNER. CONTACT McNAMARA & COMPANY - RICK THOMAS AT (704) 243-3811 FOR LIST OF OWNER PROVIDED HVAC EQUIPMENT.
NOTES:
1. INDOOR UNIT (AC) IS POWERED THROUGH OUTDOOR UNIT (COND).
2. PROVIDE WITH ALUMINUM MOUNTS FOR OUTDOOR CONDENSING UNITS.
3. PROVIDE WITH THERMOSTAT AND LOCATE AS SHOWN ON SHEET M1.01.

AIR BALANCE SCHEDULE

SUPPLY AIR UNIT	OUTSIDE AIRFLOW (CFM)	RETURN AIRFLOW (CFM)	SUPPLY AIRFLOW (CFM)	OA/SA	EXHAUST AIR UNIT	EXHAUST AIRFLOW (CFM)	REMARKS
RTU-1	1420	3580	5000	28.4	EF-1	-3160	
RTU-2	870	2130	3000	29.0	EF-2	-2400	
RTU-3	870	2130	3000	29.0	EF-3	-3400	
RTU-4	350	2050	2400	14.6	EF-4	-2400	
RTU-5	470	2730	3200	14.6	EF-5	-800	
MAU-1	4525	0	4525	100.00	EF-6	-400	
MAU-2	2110	0	2110	100.00			
MAU-3	2040	0	2040	100.00			
TOTAL	12665	12620	25285	50.08	TOTAL	-12560	

RESULTING BUILDING PRESSURIZATION: +105 CFM
PRESSURIZATION PERCENTAGE: 0.416%

HVAC RESPONSIBILITY SCHEDULE

MARK	PROVIDE	INSTALL	NOTES
RTU-1, RTU-2 AND RTU-3	LANDLORD	LANDLORD	
CAPITVEARE PACKAGE (HOODS, EF, MAU, ETC.)	OWNER	MECHANICAL CONTRACTOR	
EF-6	OWNER	MECHANICAL CONTRACTOR	
EXPOSED SPIRAL DUCT	OWNER	MECHANICAL CONTRACTOR	NOTE 1
DIFFUSERS/GRILLES	OWNER	MECHANICAL CONTRACTOR	
PC-1	MECHANICAL CONTRACTOR	MECHANICAL CONTRACTOR	
REFRIGERATION WORK (COOLER/FREEZER/MACHINE)			NOTE 2
GREASE DUCT LEAK TEST			NOTE 2
TEST AND BALANCE			NOTE 3
SMOKE DETECTORS	FIRE ALARM CONTRACTOR	MED. CONTRACTOR (WORK BY FIRE CONTRACTOR)	
THERMOSTAT, SENSORS, HUMIDISTATS	OWNER	MECHANICAL CONTRACTOR	
WIRING AND PROGRAMMING OF 1-STAT/HUMIDISTATS	MECHANICAL CONTRACTOR	MECHANICAL CONTRACTOR	
UNIT STARTUP	MECHANICAL CONTRACTOR	MECHANICAL CONTRACTOR	
TRAINING FOR HVAC UNITS TO OPERATIONS	MECHANICAL CONTRACTOR		
FILTERS CHANGED PRIOR TO STORE OPENING	MECHANICAL CONTRACTOR	MECHANICAL CONTRACTOR	

MECHANICAL ITEMS NOT COVERED IN THE ABOVE SCHEDULE TO BE PROVIDED AND INSTALLED BY THE MECHANICAL CONTRACTOR UNLESS NOTED OTHERWISE.
NOTES:
1. DOES NOT APPLY TO KITCHEN SPIRAL DUCTWORK.
2. CONTRACTED SEPARATELY BY OWNER.
3. MECH SUB AND EC SUB REQUIRED TO BE ON WHILE RTU/FAN BALANCE COMPLETED BY McNAMARA AND THE T&B ON THE EXHAUST HOODS BY CAPTIVEARE.

Firebirds Peachtree Corners

5215 Town Center Blvd,
Peachtree Corners, GA 30092

Firebirds

WOOD-FRED GRILL

starr design

interior environments

Starr Design, PLLC
1435 West Morehead St., Suite 240
Charlotte, NC 28208
V: 704 377 5200 F: 704 377 5201
www.starrdesign.com

CONSTRUCTION DOCUMENTS

05/10/18

H.V.A.C. SCHEDULES

M2.01

16F8008 © Starr Design, PLLC 2016 sheet number title

Order Plans

AirMaid by Intron