

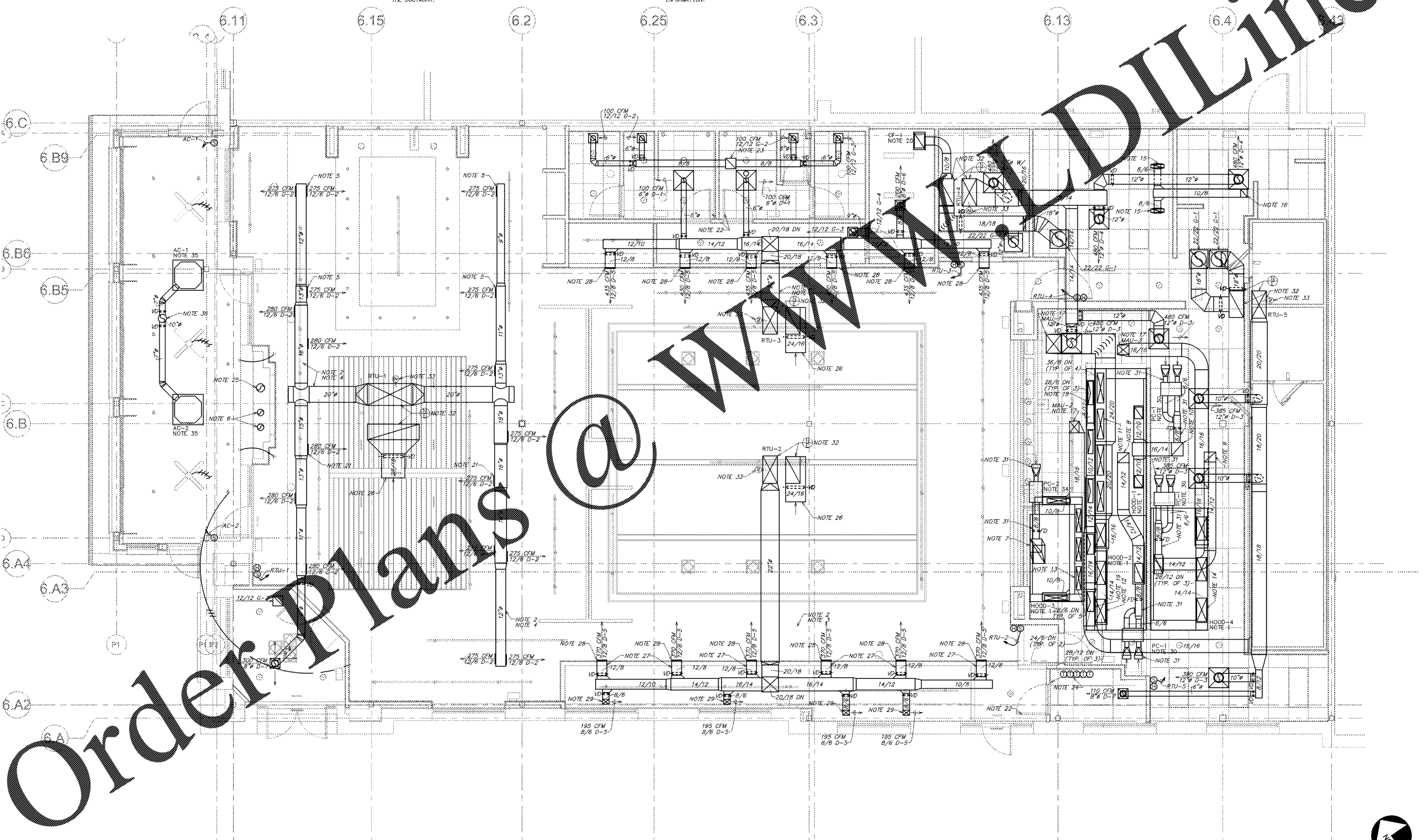
- GENERAL NOTES**
- THE MAXIMUM LENGTH OF FLEX DUCT TO DIFFUSERS SHALL BE 5'-0". NO FLEX DUCT SHALL BE PERMITTED ON RETURN OR EXHAUST SYSTEMS.
 - CONTRACTOR SHALL BE RESPONSIBLE FOR FIELD VERIFICATION OF ALL EXISTING CONDITIONS PRIOR TO SUBMITTING HIS BID. NO ADDITIONAL COMPENSATION WILL BE PROVIDED FOR ANY EXTRAS DUE TO THE CONTRACTOR'S FAILURE TO VISIT THE PROJECT SITE PRIOR TO SUBMITTING THE BID. ANY DISCREPANCIES SHALL BE IMMEDIATELY REPORTED TO THE ENGINEER FOR RESOLUTION.
 - AT THE COMPLETION OF CONSTRUCTION AN NEBS, AABC OR TABS CERTIFIED AIR BALANCE REPORT SHALL BE SUBMITTED TO THE ENGINEER AND LANDLORD. THE BALANCING MUST BE COMPLETED BY AN INDEPENDENT, THIRD PARTY CONTRACTOR WITH NO TIES TO THE INSTALLING CONTRACTORS.
 - ALL WORK SHALL BE COMPLETED IN ACCORDANCE WITH ALL APPLICABLE GOVERNMENT AND LOCAL CODES.
 - MECHANICAL CONTRACTOR SHALL FIELD COORDINATE WITH ELECTRICAL CONTRACTOR FOR ALL POWER REQUIREMENTS.
 - ALL CONTRACTORS SHALL REVIEW A COMPLETE SET OF CONSTRUCTION DOCUMENTS AND COOPERATE WITH THE OTHER TRADES SO THAT THE INSTALLATION OF ALL EQUIPMENT MAY BE PROPERLY COORDINATED.
 - ALL EQUIPMENT FURNISHED SHALL FIT THE SPACE AVAILABLE WITH CONNECTIONS IN THE REQUIRED LOCATIONS AND WITH ADEQUATE SPACE FOR OPERATING AND SERVICING. THE DRAWINGS ARE GENERALLY DIAGRAMMATIC AND INDICATE THE INTENT OF THE INSTALLATION WHILE THE SPECIFICATIONS AND EQUIPMENT LIST DENOTE THE TYPE AND QUALITY OF MATERIAL AND WORKMANSHIP TO BE USED. THE DRAWINGS SHALL NOT BE SCALED FOR EXACT MEASUREMENTS. WHERE A CONFLICT EXISTS BETWEEN THE DRAWINGS AND THE SPECIFICATIONS, THE HIGHER AND/OR MORE COSTLY STANDARD WILL APPLY. THE CONTRACTOR SHALL PROMPTLY NOTIFY THE ENGINEER WHOSE DECISION SHALL BE FINAL. NO ALLOWANCE WILL BE MADE SUBSEQUENTLY IN THIS REGARD ON BEHALF OF THE CONTRACTOR AFTER AWARD OF THE CONTRACT.
 - COORDINATE DUCT ROUTING AND HEIGHTS WITH GENERAL CONTRACTOR. VERIFY ALL CLEARANCES BEFORE STARTING WORK.
 - THE CONTRACTOR SHALL INSTALL ALL PIPING, DUCTWORK AND EQUIPMENT AS REQUIRED TO CONFORM TO THE STRUCTURE, AVOID OBSTRUCTIONS, PRESERVE CEILING HEIGHTS AND HEADROOM AND MAKE ALL EQUIPMENT REQUIRING MAINTENANCE OR REPAIR ACCESSIBLE.
 - ALL DUCT CONNECTIONS TO HVAC EQUIPMENT MUST BE MADE WITH FLEXIBLE CONNECTORS.

- DO NOT ATTACH CONNECTIONS TO DECK ABOVE. ATTACH TO STRUCTURE (I.e. BEAMS, JOISTS) ONLY. DUCT HANGERS SHALL BE INSTALLED IN ACCORDANCE WITH LOCAL CODE. ALL CONNECTIONS TO JOISTS SHALL BE MADE AT THE TOP CORNER.
- ALL DUCT DIMENSIONS INDICATED ARE CLEAR INSIDE DIMENSIONS. ALL SUPPLY AND UNTEMPERED OUTDOOR AIR DUCTWORK SHALL BE LINED WITH 1" ACOUSTICAL DUCT LINER OR WRAPPED WITH 1-1/2" THICK FIRE RETARDANT FIBERGLASS WITH A REINFORCED ALUMINUM FOIL JACKET AND SHALL BE APPROVED FOR USE BY SMOGMA AND MAHMA. RETURN AIR TRANSFER DUCTS AND RETURN DUCTWORK WITHIN 10 FEET OF THE UNIT FAN SHALL BE LINED WITH 1" ACOUSTICAL DUCT LINER. ALL SUPPLY AND UNTEMPERED OUTDOOR AIR DUCTWORK VISIBLE TO THE PUBLIC SHALL BE INTERNALLY LINED AND PAINTED TO MATCH THE SURROUNDING AREA. DUCT WRAP INSULATION IS NOT PERMITTED IN THESE AREAS.
- EXPOSED SPIRAL DUCT TO BE GALVANIZED FINISH, FREE FROM SCRATCHES, DENTS OR BLEMISHES AND PAINTED TO MATCH THE SURROUNDING AREA. DUCT SHALL BE INTERNALLY LINED AND SEALED WITH JOINT SEALER COMPLETELY CONCEALED WITHIN THE DUCT JOINT. NO EXPOSED SEALER OR TAPE WILL BE ACCEPTED.
- ROUTE DUCTWORK AS HIGH AS POSSIBLE ABOVE FLOATING CEILING ELEMENT. MOUNT EXPOSED DUCT AT 18'-4" AFF TO DUCT CENTERLINE.
- MOUNT SIDEWALL DIFFUSER AT ZERO DEGREE TO KEEP AIRFLOW HORIZONTAL OVER THE BAR SOFFIT. ALL OTHER DIFFUSERS SHALL BE MOUNTED PER DETAIL ON SHEET M1.02 UNLESS NOTED OTHERWISE.
- PROVIDE 8" CONSUMPTION AIR DUCT FROM FIREPLACE UP TO ROOF CAP. SEE SHEET M1.02 FOR CONTINUATION. INSTALL DUCT PER FIREPLACE MANUFACTURERS INSTRUCTIONS.
- TRANSITION FROM HOOD COLLAR AND EXTEND 16/14 KITCHEN HOOD GREASE EXHAUST DUCTWORK UP TO EF-3. OFFSET DUCT TO AVOID STRUCTURE. GREASE DUCT SHALL BE WRAPPED WITH TWO (2) LAYERS OF THERMAL CERAMICS FAST WRAP XL 1 1/2" THICK WITH 3" PERIMETER AND LONGITUDINAL OVERLAPS, OR EQUIVALENT U.L. LISTED GREASE DUCT WRAP FOR ZERO CLEARANCE TO COMBUSTIBLES. REFER TO DETAIL ON SHEET M1.01 FOR ADDITIONAL INFORMATION.
- TRANSITION FROM HOOD COLLAR AND EXTEND 14/12 KITCHEN HOOD GREASE EXHAUST DUCTWORK UP TO EF-2. OFFSET DUCT TO AVOID STRUCTURE. GREASE DUCT SHALL BE WRAPPED WITH TWO (2) LAYERS OF THERMAL CERAMICS FAST WRAP XL 1 1/2" THICK WITH 3" PERIMETER AND LONGITUDINAL OVERLAPS, OR EQUIVALENT U.L. LISTED GREASE DUCT WRAP FOR ZERO CLEARANCE TO COMBUSTIBLES. REFER TO DETAIL ON SHEET M1.01 FOR ADDITIONAL INFORMATION.
- TRANSITION FROM HOOD COLLAR AND EXTEND 14/12 KITCHEN HOOD GREASE EXHAUST DUCTWORK UP TO EF-4. OFFSET DUCT TO AVOID STRUCTURE. GREASE DUCT SHALL BE WRAPPED WITH TWO (2) LAYERS OF THERMAL CERAMICS FAST WRAP XL 1 1/2" THICK WITH 3" PERIMETER AND LONGITUDINAL OVERLAPS, OR EQUIVALENT U.L. LISTED GREASE DUCT WRAP FOR ZERO CLEARANCE TO COMBUSTIBLES. REFER TO DETAIL ON SHEET M1.01 FOR ADDITIONAL INFORMATION.

- NEW EXHAUST HOOD PROVIDED BY OWNER AND INSTALLED BY MECHANICAL CONTRACTOR. INSTALL PER MANUFACTURER REQUIREMENTS. MAINTAIN CLEARANCE TO ACCESS PANELS. REFER TO CAPTURE SHEETS 44.01-44.03 FOR ADDITIONAL INFORMATION.
- ALL SUPPLY AND UNTEMPERED OUTDOOR AIR DUCTWORK VISIBLE TO THE PUBLIC SHALL BE INTERNALLY LINED AND PAINTED TO MATCH THE SURROUNDING AREA. DUCT WRAP INSULATION IS NOT PERMITTED IN THESE AREAS.
- EXPOSED SPIRAL DUCT TO BE GALVANIZED FINISH, FREE FROM SCRATCHES, DENTS OR BLEMISHES AND PAINTED TO MATCH THE SURROUNDING AREA. DUCT SHALL BE INTERNALLY LINED AND SEALED WITH JOINT SEALER COMPLETELY CONCEALED WITHIN THE DUCT JOINT. NO EXPOSED SEALER OR TAPE WILL BE ACCEPTED.
- ROUTE DUCTWORK AS HIGH AS POSSIBLE ABOVE FLOATING CEILING ELEMENT. MOUNT EXPOSED DUCT AT 18'-4" AFF TO DUCT CENTERLINE.
- MOUNT SIDEWALL DIFFUSER AT ZERO DEGREE TO KEEP AIRFLOW HORIZONTAL OVER THE BAR SOFFIT. ALL OTHER DIFFUSERS SHALL BE MOUNTED PER DETAIL ON SHEET M1.02 UNLESS NOTED OTHERWISE.
- PROVIDE 8" CONSUMPTION AIR DUCT FROM FIREPLACE UP TO ROOF CAP. SEE SHEET M1.02 FOR CONTINUATION. INSTALL DUCT PER FIREPLACE MANUFACTURERS INSTRUCTIONS.
- TRANSITION FROM HOOD COLLAR AND EXTEND 16/14 KITCHEN HOOD GREASE EXHAUST DUCTWORK UP TO EF-3. OFFSET DUCT TO AVOID STRUCTURE. GREASE DUCT SHALL BE WRAPPED WITH TWO (2) LAYERS OF THERMAL CERAMICS FAST WRAP XL 1 1/2" THICK WITH 3" PERIMETER AND LONGITUDINAL OVERLAPS, OR EQUIVALENT U.L. LISTED GREASE DUCT WRAP FOR ZERO CLEARANCE TO COMBUSTIBLES. REFER TO DETAIL ON SHEET M1.01 FOR ADDITIONAL INFORMATION.
- TRANSITION FROM HOOD COLLAR AND EXTEND 14/12 KITCHEN HOOD GREASE EXHAUST DUCTWORK UP TO EF-2. OFFSET DUCT TO AVOID STRUCTURE. GREASE DUCT SHALL BE WRAPPED WITH TWO (2) LAYERS OF THERMAL CERAMICS FAST WRAP XL 1 1/2" THICK WITH 3" PERIMETER AND LONGITUDINAL OVERLAPS, OR EQUIVALENT U.L. LISTED GREASE DUCT WRAP FOR ZERO CLEARANCE TO COMBUSTIBLES. REFER TO DETAIL ON SHEET M1.01 FOR ADDITIONAL INFORMATION.
- TRANSITION FROM HOOD COLLAR AND EXTEND 14/12 KITCHEN HOOD GREASE EXHAUST DUCTWORK UP TO EF-4. OFFSET DUCT TO AVOID STRUCTURE. GREASE DUCT SHALL BE WRAPPED WITH TWO (2) LAYERS OF THERMAL CERAMICS FAST WRAP XL 1 1/2" THICK WITH 3" PERIMETER AND LONGITUDINAL OVERLAPS, OR EQUIVALENT U.L. LISTED GREASE DUCT WRAP FOR ZERO CLEARANCE TO COMBUSTIBLES. REFER TO DETAIL ON SHEET M1.01 FOR ADDITIONAL INFORMATION.

- TRANSITION FROM HOOD COLLAR AND EXTEND 16/14 KITCHEN HOOD GREASE EXHAUST DUCTWORK UP TO EF-1. OFFSET DUCT TO AVOID STRUCTURE. GREASE DUCT SHALL BE WRAPPED WITH TWO (2) LAYERS OF THERMAL CERAMICS FAST WRAP XL 1 1/2" THICK WITH 3" PERIMETER AND LONGITUDINAL OVERLAPS, OR EQUIVALENT U.L. LISTED GREASE DUCT WRAP FOR ZERO CLEARANCE TO COMBUSTIBLES. REFER TO DETAIL ON SHEET M1.01 FOR ADDITIONAL INFORMATION.
- BALANCE MAKE-UP AIR COLLAR FOR HOOD-1 TO 650 CFM. TYPICAL OF 4.
- BALANCE MAKE-UP AIR COLLAR FOR HOOD-2 TO 650 CFM. TYPICAL OF 11.
- BALANCE MAKE-UP AIR COLLAR FOR HOOD-3 TO 430 CFM. TYPICAL OF 5.
- BALANCE MAKE-UP AIR COLLAR FOR HOOD-4 TO 680 CFM. TYPICAL OF 3.
- PROVIDE 8" EXHAUST AIR DUCT DOWN THROUGH CEILING TO DISHWASHER AND TRANSITION TO 18" CONNECTION ON DISHWASHER.
- PROVIDE 10" EXHAUST AIR DUCT UP TO EF-3 ON ROOF.
- PROVIDE FULL-SIZE DUCT DROP DOWN FROM MAKE-UP AIR UNIT ON ROOF.
- BALANCE SUPPLY AIR COLLAR FOR HOOD-1 TO 360 CFM. TYPICAL OF 3.
- BALANCE SUPPLY AIR COLLAR FOR HOOD-2 TO 425 CFM. TYPICAL OF 2.
- PROVIDE CEILING MOUNTED CIRCULATION FAN. FAN SHALL OPERATE 24/7 AND SHALL BE TIED INTO THE RETURN FOR RTU-3. PROVIDE WITH BACKGROUND DAMPER.
- MOUNT SIDEWALL DIFFUSER AT SIXTY DEGREE TO KEEP BELOW CEILING ELEMENT. ALL OTHER DIFFUSERS SHALL BE MOUNTED PER DETAIL ON SHEET M1.01 UNLESS NOTED OTHERWISE.
- CONTRACTOR SHALL UNDERCUT DOOR 1".
- PROVIDE 10" EXHAUST AIR DUCT UP TO EF-6 ON ROOF.
- NEW 7 DAY DIGITAL 7 DAY PROGRAMMABLE TYPE THERMOSTAT WITH REMOTE SENSING CAPABILITIES. AUTO CHANGE OVER AND AUTO SET BACK BY OWNER. MOUNT THERMOSTAT AT 48" ABOVE FINISHED FLOOR. THERMOSTATS SERVING THE SAME TEMPERATURE ZONE SHALL BE INTERLOCKED TO PREVENT SIMULTANEOUS HEATING AND COOLING. COORDINATE LOCATION WITH WALL GRAPHICS LAYOUT. MOUNT REMOTE TEMPERATURE SENSORS AND HUMIDISTATS AS INDICATED ON PLAN.
- PROVIDE 10" VENT AIR DUCT FROM FIREPLACE UP TO ROOF VENT. SEE SHEET M1.02 FOR CONTINUATION. INSTALL DUCT PER FIREPLACE MANUFACTURERS INSTRUCTIONS.
- OPEN END RETURN AIR DUCT. PROVIDE OPENING WITH 1/4" MESH GALVANIZED SCREEN.
- OFFSET BRANCH DUCT TO SIDEWALL GRILLE AS NECESSARY TO MOUNT GRILLE AT 13'-6" AFF TO GRILLE CENTERLINE.

- MOUNT SIDEWALL GRILLES AT 13'-6" AFF TO GRILLE CENTERLINE.
- MOUNT SIDEWALL GRILLE TO THE UNDERSIDE OF THE SOFFIT ABOVE THE FLOATING CEILING ELEMENT.
- PROVIDE AIRMAID 2000V POLLUTION CONTROL SYSTEM, PC-1, FOR HOOD-1, HOOD-2, AND HOOD-4. CONTACT AIR CONTROL PRODUCTS AT 440-526-3020 FOR ORDERING INFORMATION. INSTALL PER MANUFACTURER INSTRUCTIONS.
- INSTALL AND CONNECT DUCTWORK FROM AIRMAID TO THE HOOD GREASE EXHAUST DUCT PER MANUFACTURERS INSTRUCTIONS. SEE DETAIL #2 ON SHEET M1.01 FOR INSTALLATION INSTRUCTIONS. DUCTWORK SHALL BE TYPE-1 WELDED AND INSULATED DUCT. BALANCE UNIT TO PROVIDE 25 CFM OF BLEED AIR FROM PLENUM PER MANUFACTURERS INSTRUCTIONS.
- PROVIDE NEW FULL-SIZE SUPPLY AND RETURN DUCT AND CONNECT TO EXISTING SUPPLY AND RETURN DROPS FROM LANDLORD PROVIDED STUDS.
- DUCT SMOKE DETECTOR ON SUPPLY SIDE DUCT AND SHUTDOWN RELAY SHALL BE PROVIDED BY THE FIRE ALARM CONTRACTOR. INSTALLED BY THE MECHANICAL CONTRACTOR AND WIRING SHALL BE BY THE FIRE ALARM CONTRACTOR.
- BALANCE SUPPLY AIR COLLAR FOR HOOD-3 TO 440-526-3020 FOR ORDERING INFORMATION. CONTACT AIR CONTROL PRODUCTS AT 440-526-3020 FOR ORDERING INFORMATION.
- PROVIDE NEW CEILING MOUNTED CASSETTE UNIT AS NOTED ON PLANS AND SCHEDULED ON SHEET M1.01. PROVIDE REFRIGERANT LINES FROM COND ON ROOF TO AC IN UNIT. LINES SHALL BE SIZED ACCORDING TO MANUFACTURER'S SPECIFICATIONS. PROVIDE ALL ACCESSORIES AS REQUIRED BY MANUFACTURER FOR COMPLETE WORKING SYSTEM, INCLUDING ANY ACCESSORIES ASSOCIATED WITH LONG LENGTH APPLICATIONS WHERE APPROPRIATE.
- PROVIDE NEW OUTDOOR AIR DUCT FOR AC UNIT. CONNECT TO AC UNIT. SITE UP THROUGH ROOF TO ROOF CAP. PROVIDE ROOF CAP WITH BURGERS.



Order Plans @ [firebirds.com](mailto:plans@firebirds.com)

Firebirds Peachtree Corners

5215 Town Center Blvd,
Suite 650
Peachtree Corners, GA 30092

Firebirds
WOOD FRED GRILL

starr design
blended environments

Starr Design, PLLC
1435 West Morehead St, Suite 240
Charlotte, NC 28208
V. 704.377.5200 F. 704.377.5201
www.starrdesignnc.com

CONSTRUCTION DOCUMENTS
05/10/18

No.	Description	Date



H.V.A.C. FLOOR PLAN

M1.01

18FB008 © Starr Design, PLLC 2018

project address | name | client | designers | job status | revisions | seal