

project address | name

client

designer

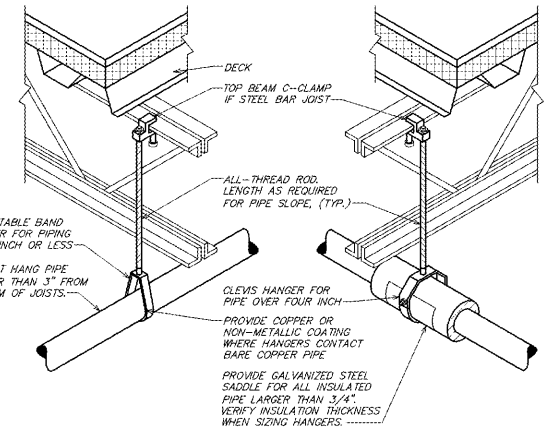
designer

job status

revisions

seal

sheet number | title

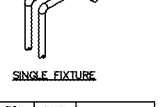


NOTE:
PROVIDE UPPER ATTACHMENT AS REQUIRED FOR CASES NOT SHOWN HERE. DO NOT INSTALL HANGER INSIDE INSULATION OR OTHERWISE PENETRATE VAPOR BARRIER. DO NOT HANG ONE PIPE FROM ANOTHER EXCEPT IN CHASSES. TRAPEZOIDAL HANGERS MAY BE USED FOR MULTIPLE PARALLEL PIPES. HANGER SPACING FOR PIPE SIZE:
COPPER: 4\"/>

3 PIPE HANGER DETAIL
NOT TO SCALE

FIXTURE UNIT TABULATION

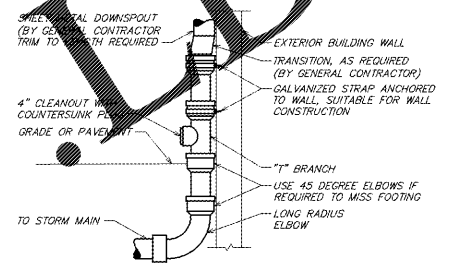
FIXTURE	COLD	HOT
VALVE WATER CLOSET	10	---
TANK WATER CLOSET	5	---
URINAL	5	---
LAVATORY/SINK	1.5	1.5
JANITOR'S SINK	3	3
SHOWER/BATHTUB	2	2



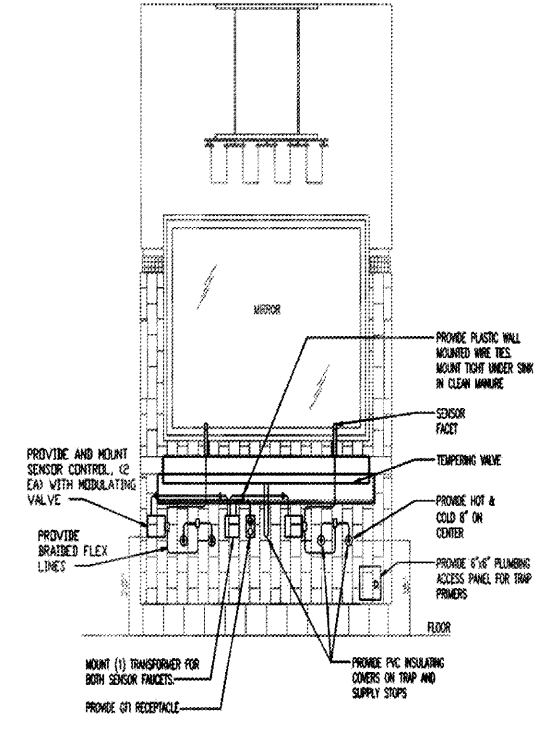
PDI SIZE	PIPE SIZE	FIXTURE UNIT LOAD
A	1/2"	1-11
B	3/4"	12-32
C	1"	33-60
D	1-1/4"	61-113
E	1-1/2"	114-154
F	2"	155-330

PLUMBING CONTRACTOR SHALL PROVIDE WATER HAMMER ARRESTERS BY SLOTTED CHIEF, PRECISION PLUMBING PRODUCTS OR APPROVED EQUIVALENT WITH PISTON AND O-RING CONSTRUCTION, HAVING PDI #WH-201, ASSE #1010 AND ANSI #M12.26.14. INSTALL IN HORIZONTAL OR VERTICAL POSITION, BUT NEVER UPSIDE DOWN. INSTALL IN LINE WITH WATER FLOW DIRECTION IF POSSIBLE. SIZE AS SHOWN ON THE DRAWINGS AND/OR PER THE TABLES SHOWN ABOVE.

5 WATER HAMMER ARRESTERS
NOT TO SCALE



6 EXTERIOR DOWNSPOUT SHOE
NOT TO SCALE



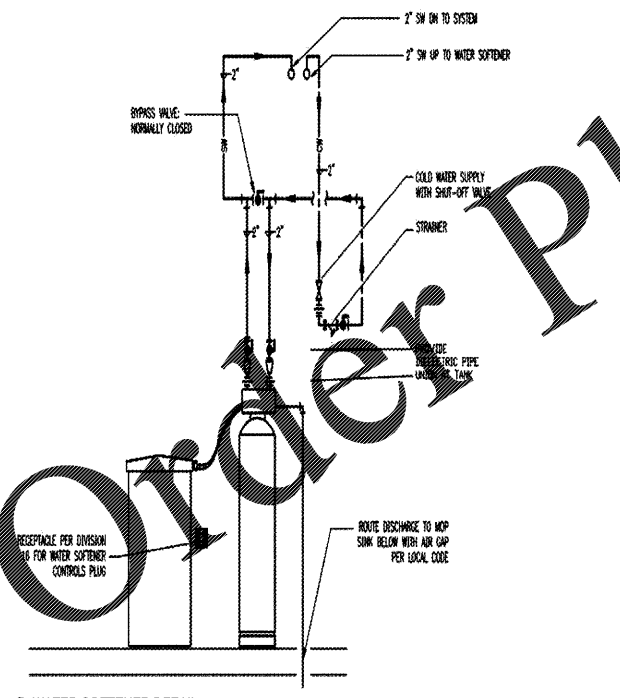
1 TYPICAL LAVATORY ELEVATION
NOT TO SCALE

NOTES:

- PIPE SHALL BE BROKEN LINES TO BE FABRICATED BY OTHERS.
- ALL CONDENSING ARE 1/2" (3/8") AND SUBJECT TO CHANGE WITHOUT NOTICE.
- CONDENSING SHALL BE LOCATED ON INLET AND OUTLET CONNECTIONS OF CONTROL VALVE TO FACILITATE SERVICING.
- THE USE OF DISCONNECT METALS IN A PIPING SYSTEM IS NOT RECOMMENDED WHERE DISCONNECT METALS MUST BE CONNECTED IN A BRASS SYSTEM THE USE OF NONDISCONNECTIBLE FITTINGS MAY REDUCE GALVANIC CORROSION.
- AN ELECTRICAL CLOSET SHOULD BE PROVIDED WITHIN THE FOOT OF THE EQUIPMENT LOCATION.
- ALLOW A MINIMUM OF 24 HOURS BEFORE REPAIR FOR FILLING.
- TO PREVENT THE OBSTRUCTION OF THE DRAIN LINE DO NOT MAKE A DIRECT CONNECTION TO THE DRAIN THROUGH AN AIR GAP OR AT LEAST FOUR TIMES THE DIAMETER OF THE DRAIN PIPE OR CONNECTION TO LOCAL SEWERAGE CODES.
- WHEN USED A BRASS METAL THERE MUST BE A BRASS INLET OR STRAIGHT PIPE BEFORE AND AFTER THE SENSOR. REFER TO THE INSTALLATION INSTRUCTIONS FOR DETAILS.
- STEEL USED FOR DRAIN BARS MUST NOT BE SUBJECT TO BRASS OR GALVANIC CORROSION. ON DRAIN LINE INSTALL VALVE BREAKER OR INLET PIPING IF THE DRAIN LINE IS SUBJECT TO A VIBRATION.
- BRASS THESE DIMENSIONS SHOWN ARE FOR THE BRASS BODY. MUST BE CAREFULLY SELECTED FOR USE WITH THIS SENSITIVE SYSTEM.

DIMENSIONS (INCHES)		WEIGHT (POUNDS)	
MODEL	SIZE	DRY WEIGHT	WET WEIGHT
100-10-1.5	1.5	1.0	1.5
100-10-1.5	2.0	1.5	2.0
100-10-1.5	2.5	2.0	2.5
100-10-1.5	3.0	2.5	3.0
100-10-1.5	3.5	3.0	3.5
100-10-1.5	4.0	3.5	4.0
100-10-1.5	4.5	4.0	4.5
100-10-1.5	5.0	4.5	5.0
100-10-1.5	5.5	5.0	5.5
100-10-1.5	6.0	5.5	6.0
100-10-1.5	6.5	6.0	6.5
100-10-1.5	7.0	6.5	7.0
100-10-1.5	7.5	7.0	7.5
100-10-1.5	8.0	7.5	8.0
100-10-1.5	8.5	8.0	8.5
100-10-1.5	9.0	8.5	9.0
100-10-1.5	9.5	9.0	9.5
100-10-1.5	10.0	9.5	10.0

4 WATER SOFTENER SPECIFICATION
NOT TO SCALE



2 WATER SOFTENER DETAIL
NOT TO SCALE

Calligan ENGINEERED SYSTEMS
ROCKWELL, GEORGIA

DATE: 05/10/18
BY: [Signature]
CHECKED BY: [Signature]

Order Plans

CONSTRUCTION DOCUMENTS
05/10/18

No.	Description	Date

