

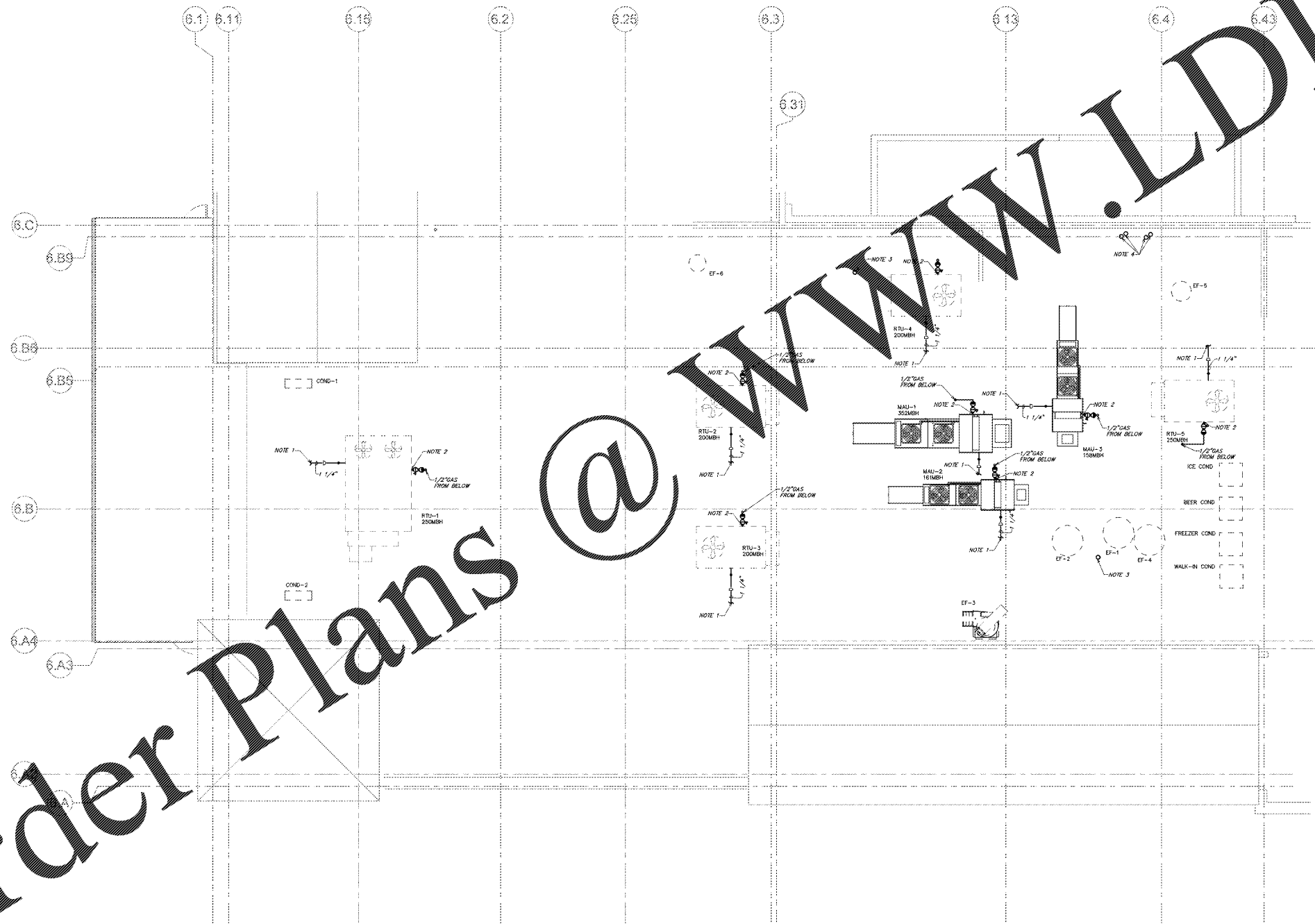


starr design

Starr Design, PLLC  
1435 West Morehead St, Suite 240  
Charlotte, NC 28208  
V: 704 377 5200 F: 704 377 5201  
www.starrdesignnc.com

- GENERAL NOTES:**
- ALL WORK SHALL BE COMPLETED IN ACCORDANCE WITH ALL APPLICABLE GOVERNMENTAL AND LOCAL CODE REQUIREMENTS.
  - PROVIDE ACCESS PANELS AS REQUIRED TO ALLOW ACCESS TO VALVES, EQUIPMENT, ETC. LOCATED ABOVE INACCESSIBLE CEILINGS AND WALL CAVITIES.
  - ALL SANITARY LINES AND PLUMBING FIXTURES ON THE PROJECT SHALL HAVE AN APPROVED MEANS OF SEWAGE BACKFLOW PREVENTION. FIXTURE SPECIFIC BACKFLOW PREVENTION INCLUDING AIR GAPS AND VACUUM BREAKERS ARE AN ACCEPTABLE MEANS OF BACKFLOW PREVENTION.
  - PIPE SIZES INDICATED ON THE PLANS ARE MINIMUM. THE CONTRACTOR SHALL PROVIDE PIPE SIZES EQUAL TO OR GREATER THAN THE SPECIFIED SIZES. THE CONTRACTOR MAY INCREASE PIPE SIZES AS REQUIRED AT NO ADDITIONAL EXPENSE TO THE PROJECT.
  - REFER TO THE PLUMBING FIXTURE SCHEDULE FOR INDIVIDUAL PLUMBING FIXTURE CONNECTION SIZE REQUIREMENTS.
  - COORDINATE ALL SLAB PENETRATIONS WITH GENERAL CONTRACTOR PRIOR TO CONSTRUCTION. MAINTAIN A MINIMUM OF 2" CLEARANCE FROM THE EDGE OF THE SLAB OPENING TO ANY STRUCTURAL MEMBERS AND PIPES.
  - SLEEVE OR CORE-DRILL FLOOR SLABS, WALLS, ETC. AS REQUIRED FOR PIPING AND FIRE-STOP OPENING AROUND PIPE. VERIFY LOCATION OF STRUCTURAL BEAMS, JOISTS, ETC. BEFORE DRILLING.
  - ALL STORM PIPING SHALL BE INSTALLED AS HIGH AS POSSIBLE AND AS CLOSE TO THE BOTTOM OF ROOF DECKING AS POSSIBLE. THE STORM PIPING SHALL BE SLOPED AT 1/8" PER FOOT UNLESS NOTED OTHERWISE.

- PLUMBING NOTES:**
- ROUTE THE CONDENSATE PIPING ON THE ROOF FROM THE ROOFTOP UNIT TO THE NEAREST ROOF DRAIN OR GUTTER. THE CONDENSATE SHALL BE CONNECTED TO ROOFTOP UNIT IN ACCORDANCE WITH THE MANUFACTURER'S RECOMMENDATIONS. VERIFY CONDENSATE REMOVAL REQUIREMENTS WITH ARCHITECT PRIOR TO INSTALLATION. IF CONFLICTS OCCUR, NOTIFY THE ARCHITECT/ENGINEER IMMEDIATELY.
  - CONNECT NATURAL GAS SERVICE TO ROOFTOP UNIT IN ACCORDANCE WITH MANUFACTURER'S RECOMMENDATIONS. REFER TO DETAIL SHEET FOR ADDITIONAL INFORMATION. VERIFY EXACT LOCATION OF NATURAL GAS CONNECTION ON ROOFTOP UNIT WITH EGRESS PRIOR TO INSTALLATION.
  - 4" VENT THROUGH ROOF. 1/2" VENT THROUGH ROOF. MINIMUM DISTANCE OF 15'-0" FROM ALL FRESH AIR INTAKES AND EXHAUST OPENINGS.
  - FLUEVISH AND INSTALLED 4" DIAMETER PVC CONNECTION AIR AND EXHAUST FROM THE WATER HEATER TO EXTERIOR. FINISH AND INSTALL VENT TERMINAL AND MESH WIRE SCREEN ON INTAKE AND EXHAUST. VENT TERMINATIONS SHALL BE A MINIMUM OF 36" AWAY MINIMUM OF 36" HORIZONTALLY AND VERTICALLY FROM ANY BUILDING OPENING INCLUDING FRESH AIR INTAKES. EXTEND THE EXHAUST TERMINAL 6" FROM THE AIR INTAKE TERMINAL. THE INSTALLATION SHALL BE IN ACCORDANCE WITH THE MANUFACTURER'S RECOMMENDATIONS AND ALL APPLICABLE LOCAL AND STATE CODES. COORDINATE MAXIMUM ALLOWABLE EXHAUST AND VENT LENGTHS WITH THE MANUFACTURER'S RECOMMENDATIONS.



Order Plans @

WWW.LDIDLE.COM



project address | name

client

ent

designers

CONSTRUCTION DOCUMENTS  
05/10/18  
job status

revisions

seal

sheet number | title