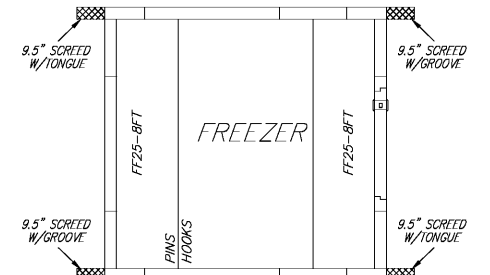


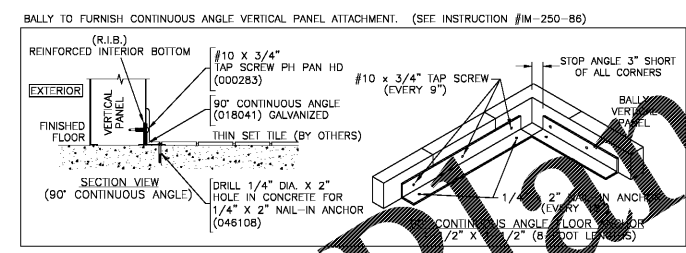
— VERTICAL & CEILING PANEL LAYOUT —



— FLOOR PANEL LAYOUT —

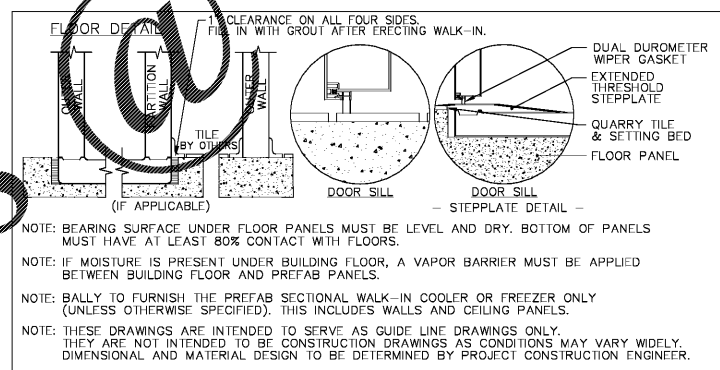
— PLAN VIEW A —

SCALE: 3/8" = 1' - 0"



BALLY TO FURNISH CONTINUOUS ANGLE VERTICAL PANEL ATTACHMENT. (SEE INSTRUCTION #IM-250-86)

REINFORCED INTERIOR BOTTOM
#10 X 3/4" TAP SCREW PH PAN HD (000283)
90° CONTINUOUS ANGLE (018041) GALVANIZED
THIN SET TILE (BY OTHERS)
SECTION VIEW (90° CONTINUOUS ANGLE)
DRILL 1/4" DIA. X 2" HOLE IN CONCRETE FOR 1/4" X 2" NAIL-IN ANCHOR (046108)
CONTINUOUS ANGLE FLOOR ATTACHMENT (EVERY 9")
STOP ANGLE 3" SHORT OF ALL CORNERS
BALLY VERTICAL PANEL



FLOOR DETAIL
1" CLEARANCE ON ALL FOUR SIDES.
FIT IN WITH GROUT AFTER ERECTING WALK-IN.

DUAL DUROMETER WIPER GASKET
EXTENDED THRESHOLD STEPPLATE
QUARRY TILE & SETTING BED
FLOOR PANEL

NOTE: BEARING SURFACE UNDER FLOOR PANELS MUST BE LEVEL AND DRY. BOTTOM OF PANELS MUST HAVE AT LEAST 80% CONTACT WITH FLOORS.

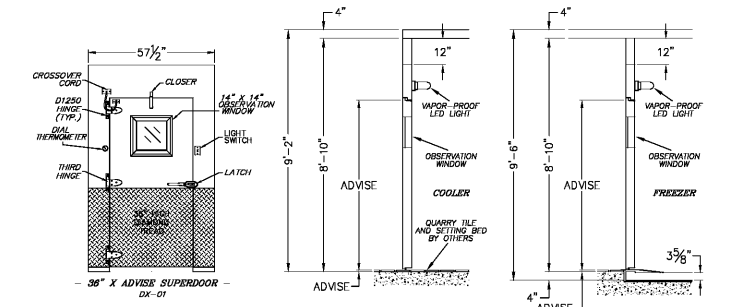
NOTE: IF MOISTURE IS PRESENT UNDER BUILDING FLOOR, A VAPOR BARRIER MUST BE APPLIED BETWEEN BUILDING FLOOR AND PREFAB PANELS.

NOTE: BALLY TO FURNISH THE PREFAB SECTIONAL WALK-IN COOLER OR FREEZER ONLY (UNLESS OTHERWISE SPECIFIED). THIS INCLUDES WALLS AND CEILING PANELS.

NOTE: THESE DRAWINGS ARE INTENDED TO SERVE AS GUIDE LINE DRAWINGS ONLY. THEY ARE NOT INTENDED TO BE CONSTRUCTION DRAWINGS AS CONDITIONS MAY VARY WIDELY. DIMENSIONAL AND MATERIAL DESIGN TO BE DETERMINED BY PROJECT CONSTRUCTION ENGINEER.

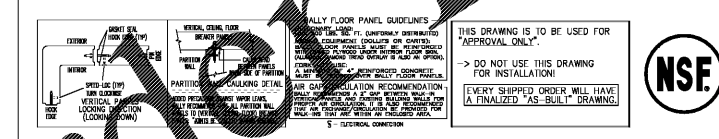
- SPECIFICATIONS**
43'-2 1/2" X 7'-9" X 9'-6"
(L/FLOOR, EXTENDED HEIGHT)
- INSTALLATION**
- INDOOR
 - LOADING HEIGHT — AT LEAST 24" OF OPEN SPACE MUST BE MAINTAINED BETWEEN TOP OF PRODUCT AND CEILING PANELS
- INSULATION**
- POURED IN-PLACE POLYURETHANE FOAM
 - BALLY PANELS AND DOORS ARE CERTIFIED COMPLIANT WITH CURRENT FEDERAL DOE REGULATIONS FOR WALK-IN COOLERS & FREEZERS
 - BALLY PANELS AND DOORS MEET MINIMUM R-VALUE FOR COOLERS (MINIMUM R-25) AND FLOORS AND DOORS (MINIMUM R-32 EXCEPT FLOORS, WHICH ARE MINIMUM R-28) UNLESS NOTED PER ASIM C518 OR FEDERAL STANDARD 231.304
- EXTERIOR FINISH**
- EMBOSSED GALVALUME
- EXTERIOR FINISH**
- EMBOSSED GALVALUME
- FLOOR FINISH (FREEZER)**
- EXTERIOR SMOOTH ALUMINUM
 - EXTERIOR EMBOSSED GALVALUME
- DOORS/ACCESSORIES**
- (1) 36" X ADVISE LEFT SWING HINGED WALK-IN DOOR
 - (2) 36" X ADVISE RIGHT SWING HINGED WALK-IN DOOR
 - SUPERDOOR: 3RD HINGE, DT INT & EXT 36"71
 - PRP
 - VAPOR-PROOF LIGHT W/ LED BULB
 - 14" X 14" HEATED OBSERVATION WINDOW
 - EXTERIOR CROSSOVER CORD
 - EXTENDED STEPPLATE (DX-02, DX-03)
- REFRIGERATION — BY BALLY (CONDENSING UNIT MOUNTED OUTDOORS)**
- | QTY | WV | REF | MODEL NUMBER | POWER SUPPLY | COMPRESSOR | EVAP. MFRS. | TOTAL WEIGHT | AMPS | MAX. HGT. | WV# |
|-----|-----|---------------|---------------|---------------|------------|-------------|--------------|------|-----------|------|
| 1 | 1.0 | PROHIBITED | 16-HI38B | 208-230V/1/60 | 4.2 31.0 | 1 | 0.5 | | 5.8 | 15 C |
| 1 | 1.0 | BLP209-MA-S18 | 208-230V/1/60 | 1 | 1/15 | 0.6 | 1080 | 4.6 | 5.8 | 15 C |
| 1 | 1.5 | PROHIBITED | 16-HI38B | 208-230V/1/60 | 6.6 50.0 | 1 | 1.1 | | 8.4 | 15 F |
| 1 | 1.5 | BLP209-MA-S18 | 208-230V/1/60 | 1 | 1/15 | 0.6 | 1080 | 4.6 | 5.8 | 15 F |
| 1 | 2.0 | PROHIBITED | 16-HI38B | 208-230V/1/60 | 8.9 55 | 1 | 1.1 | | 12.2 | 30 C |
| 2 | 2.0 | BLP209-MA-S18 | 208-230V/1/60 | 2 | 1/15 | 0.6 | 2160 | 9.2 | 11.5 | 30 C |
- ALL CONDENSATION DRAIN LINES MUST BE SLOPED AT LEAST 1/32" PER FOOT
■ FREEZER CONDENSATION DRAIN LINES MUST BE HEATED, INSULATED AND TRAPPED INDIVIDUALLY BY OTHERS
- (1) TIME CLOCK SHIPPED LOOSE
- FIELD NOTIFICATION OF THERMOSTAT WIRING FOR MULTI-COIL INSTALLATION —
THE COMPRESSOR COILS PROVIDED ON THIS COOLER/FREEZER HAVE BEEN MANUFACTURED WITH INDIVIDUAL THERMOSTATS AND SOLENOIDS. WHEN WIRING THESE COILS IN THE FIELD MAKE CERTAIN TO CONNECT ALL SOLENOIDS IN PARALLEL TO A SINGLE THERMOSTAT. IT IS RECOMMENDED THAT THE THERMOSTAT LOCATED CLOSEST TO THE ENTRANCE DOOR BE USED AS THE PRIMARY.

- GENERAL NOTES**
- NOTE: BALLY TO FURNISH 1 1/2" X 1 1/2" CONTINUOUS ANGLE FOR VERTICAL PANEL BASE ATTACHMENT (COOLERS).
 - NOTE: BALLY TO FURNISH (?) KILN 48" LED LIGHTS. LIGHTS SHIPPED LOOSE AND MOUNTED AND WIRED BY OTHERS. (LIGHT SWITCH (12) AMPS MAX.)
 - NOTE: BALLY TO FURNISH CLOSURE TRIM. PLEASE ADVISE SIZE AND QUANTITY. ALL FASTENERS AND INSTALLATION BY OTHERS.



— SECTION VIEW —
THRU ENTRANCE DOOR

SCALE: 3/8" = 1' - 0" SHEET 1 OF 1



BALLY FLOOR PANEL GUIDELINES

THIS DRAWING IS TO BE USED FOR APPROVAL ONLY.
DO NOT USE THIS DRAWING FOR INSTALLATION.
EVERY SHIPPED ORDER WILL HAVE A FINALIZED "AS-BUILT" DRAWING.



RESTRICTED, CONFIDENTIAL DOCUMENT.

THIS DRAWING AND ALL INFORMATION SHOWN HEREON ARE THE EXCLUSIVE PROPERTY OF BALLY REFRIGERATED BOXES, INC. AND ARE SUBMITTED ONLY ON A CONFIDENTIAL BASIS. THE RECIPIENT AGREES NOT TO REPRODUCE THE DRAWING, TO RETURN IT UPON REQUEST, AND THAT NO DISCLOSURE OF THE DRAWING OR THE INFORMATION SHOWN HEREON WILL BE MADE TO A THIRD PARTY WITHOUT PRIOR WRITTEN CONSENT FROM BALLY REFRIGERATED BOXES, INC.

SIGNED APPROVAL
SIGNED _____
DATE _____

PLEASE READ
THIS DRAWING HAS BEEN CAREFULLY CHECKED BY OUR DRAFTING DEPARTMENT. HOWEVER, ERRORS OF INTERPRETATION CAN OCCUR. THE RECIPIENT IS RESPONSIBLE FOR CHECKING THE DRAWING CAREFULLY. NOTE — THIS DRAWING WILL NOT BE REVISITED FOR PRODUCTION UNTIL RECEIPT OF APPROVED DRAWINGS BY BALLY.

IMPORTANT — PLEASE READ

THESE DRAWINGS ARE NOT TO BE CONSIDERED AS APPROVED BY LOCAL OR STATE BUILDING AUTHORITIES. THEY HAVE BEEN PREPARED SOLELY FOR THE GUIDANCE OF DESIGNER ARCHITECTS AND ENGINEERS AND FOR THE ASSISTANCE OF LOCAL BUILDING DEPARTMENTS. THE RECIPIENT IS RESPONSIBLE FOR OBTAINING ALL NECESSARY PERMITS AND FOR THE INDUSTRY'S COMPLIANCE WITH ALL APPLICABLE CODES AND REGULATIONS. THE DRAWINGS AND SPECIFICATIONS PROVIDED ARE THE PROPERTY OF BALLY REFRIGERATED BOXES, INC. BALLY REFRIGERATED BOXES, INC. PROVIDES SAMPLE PANEL FINISH FOR ANY BUILDING OR WALK-IN APPLICATION.

FOR		FIREBIRDS PEACHTREE CORNERS, GA	
DRAWING NUMBER	17651AD	DATE	08/17/17
DRAWN BY	RCB	ORDER NUMBER	17651
REV	DESCRIPTION	DATE	
1	REVISED DOOR LOCATION (OFFSET)	08/18/17	
		BY	RCB

CONSTRUCTION DOCUMENTS
5/10/2018

No.	Description	Date

Steven A. Starr, AIA
Lic. #
Signature Date:
Date of expiration:

HOOD
MANUFACTURER
SHOP
DRAWINGS
QF713