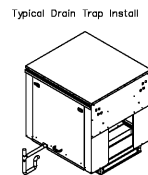
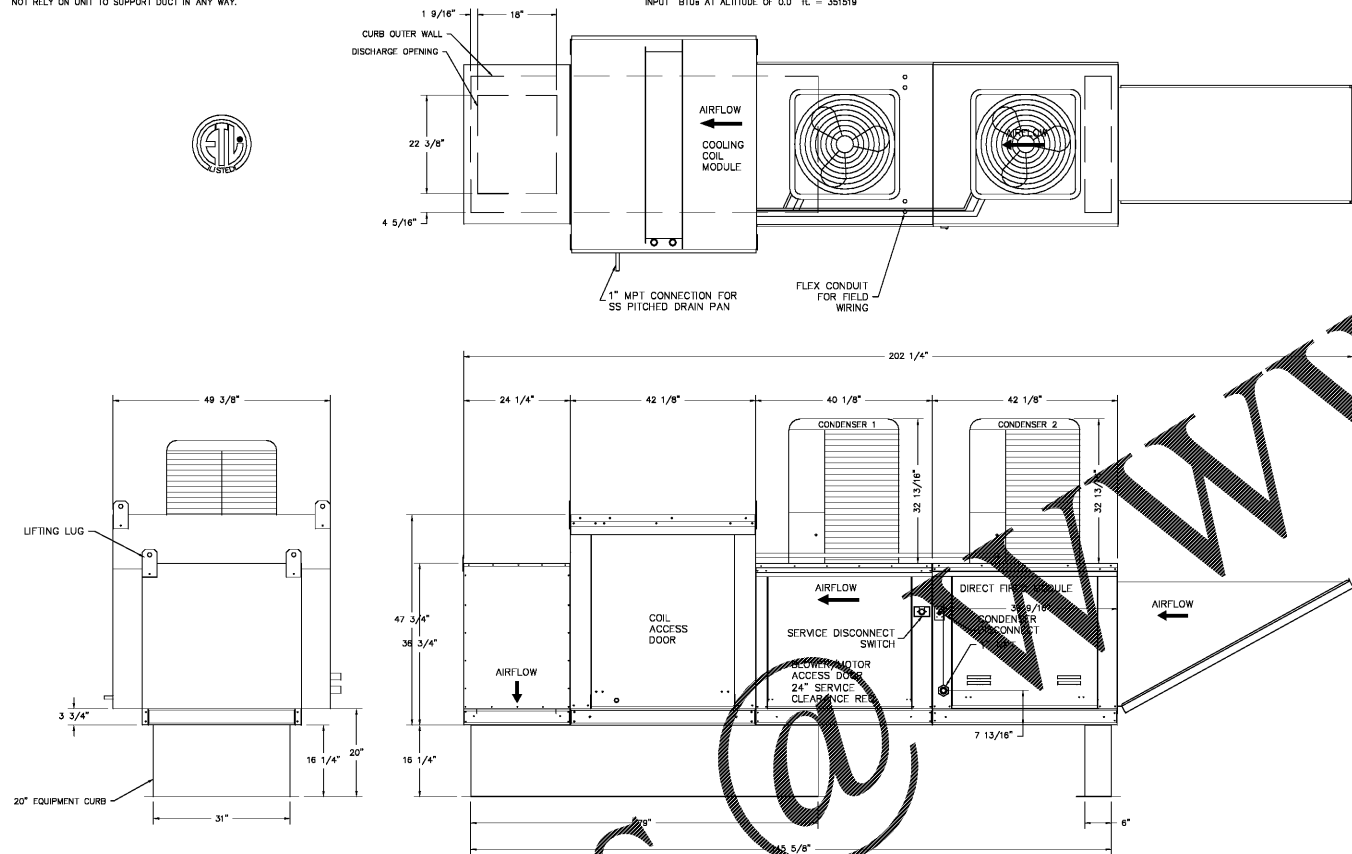
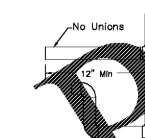


- FAN #3 A2-D-750-G15-MPU - HEATER (MAIN SF)
1. DIRECT GAS FIRED HEATED MAKE UP AIR UNIT WITH 15" BLOWER
  2. INTAKE HOOD WITH FZ FILTERS
  3. DOWN DISCHARGE - AIR FLOW RIGHT -> LEFT
  4. COOLING INTERLOCK RELAY - 24VAC COIL - 120V CONTACTS. LOOKS OUT BURNER CIRCUIT WHEN AC IS ENERGIZED.
  5. MOTORIZED BACK DRAFT DAMPER 22 7/8" X 24" FOR SIZE 2 STANDARD & MODULAR HEATER UNITS W/EXTENDED SHAFT, STANDARD GALVANIZED CONSTRUCTION, 3/4" REAR FLANGE, LEVER ACTUATOR INCLUDED.
  6. LOW FIRE START - ALLOWS THE BURNER CIRCUIT TO ENERGIZE WHEN THE MODULATION CONTROL IS IN A LOW FIRE POSITION.
  7. GAS PRESSURE GAUGE, 0-35", 2.5" DIAMETER, 1/4" THREAD SIZE
  8. GAS PRESSURE GAUGE, 0-115 INCHES WC, 2.5" DIAMETER, 1/4" THREAD SIZE
  9. FULL ORATING FOR COMMERCIAL HEATERS FOR SHIPPING.
  10. DX COOLING MAKE AIR THERMOSTAT AND RELAYS MOUNTED IN UNIT - SET POINT FOR THERMOSTAT SHOULD BE 85°F.
  11. SEPARATE 120VAC WIRING PACKAGE FOR MAKE-UP AIR UNITS. OPTION MUST BE SELECTED WHEN MOUNTING VFD IN PREWIRE PANEL OR WITH DCV PACKAGE. PROVIDES SEPARATE 120VAC INPUT TO SUPPLY FAN. THIS 120V SIGNAL MUST BE RUN BY ELECTRICIAN FROM DCV TO MUA SWITCH.
  12. 10 TOR. DUAL CIRCUIT (5/5) MODULAR PACKAGED COOLING OPTION FOR SIZE 2 MODULAR PACKAGED UNIT. INCLUDES CONDENSER, DX COIL, FILTER/DRYER KIT, THERMAL EXPANSION VALVE, R410A REFRIGERANT, AND REFRIGERANT PIPING. (3,500 TO 5,000 CFM) NOT BUILT WITH OPPOSITE SIDE CONTROLS OR OPPOSITE AIRFLOW DIRECTION. CONDENSERS REQUIRE SEPARATE 208V, 3 PHASE POWER SUPPLY. COIL = SF200002
  13. DOWNTURN PLUNAM FOR SIZE 2 COOLING COIL MODULE - REQUIRED FOR DOWN DISCHARGE COOLING COIL APPLICATIONS

SUPPLY SIDE HEATER INFORMATION:  
WINTER TEMPERATURE = 9°F. TEMP. RISE = 69°F.  
BTUs CALCULATED OFF STANDARD AIR DENSITY.  
OUTPUT BTUs AT ALTITUDE OF 0.0 FL = 322387  
INPUT BTUs AT ALTITUDE OF 0.0 FL = 351519

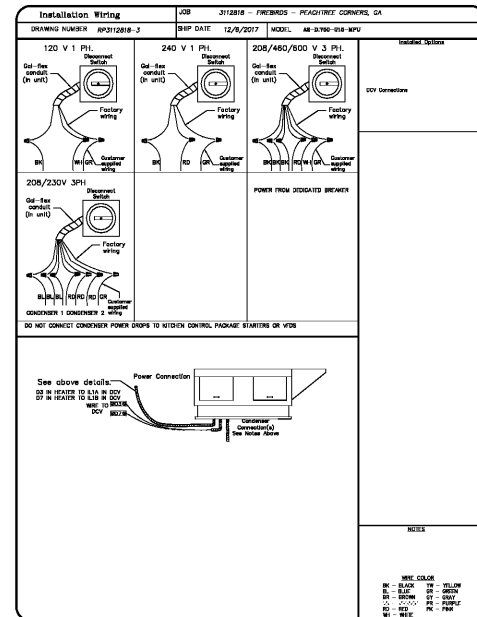
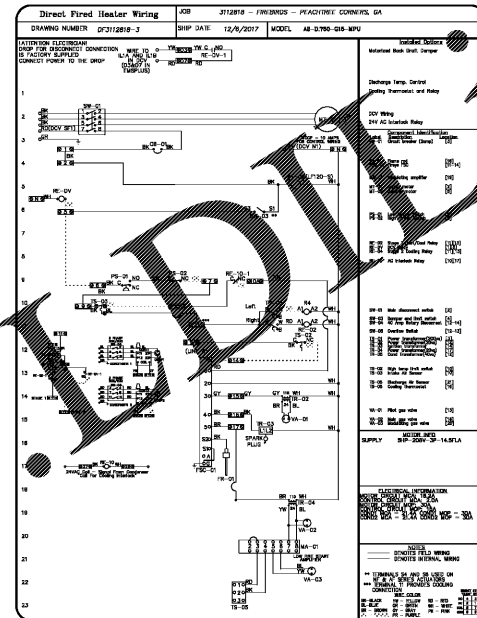


Typical Drain Trap Install



Recommended Cooling Coil Drain Trap Configuration

- Notes:
- 1) 1" diameter pipe size only
  - 2) Use only low pressure couplings
  - 3) Add clean out at end of line



REVISIONS	
DESCRIPTION	DATE

**CAPTIVE**  
Piedmont Area Office  
6303 Camel Road, Suite #105, Charlotte, NC 28226 PHONE: (704) 844-8888 FAX: (919) 227-5852 EMAIL: rpg3@captivedesign.com

FIREBIRDS - PEACHTREE CORNERS, GA  
NORCROSS, GA, 30071

DATE: 12/6/2017  
DWG.#: 3112818  
DRAWN BY: evon.zipperer  
SCALE: 3/4" = 1'-0"  
MASTER DRAWING

SHEET NO. 7

CONSTRUCTION  
DOCUMENTS  
5/10/2018

No.	Description	Date

Steven A. Starr, AIA  
Lic. #  
Signature Date:  
Date of expiration:

HOOD  
MANUFACTURER  
SHOP  
DRAWINGS  
**QF707**