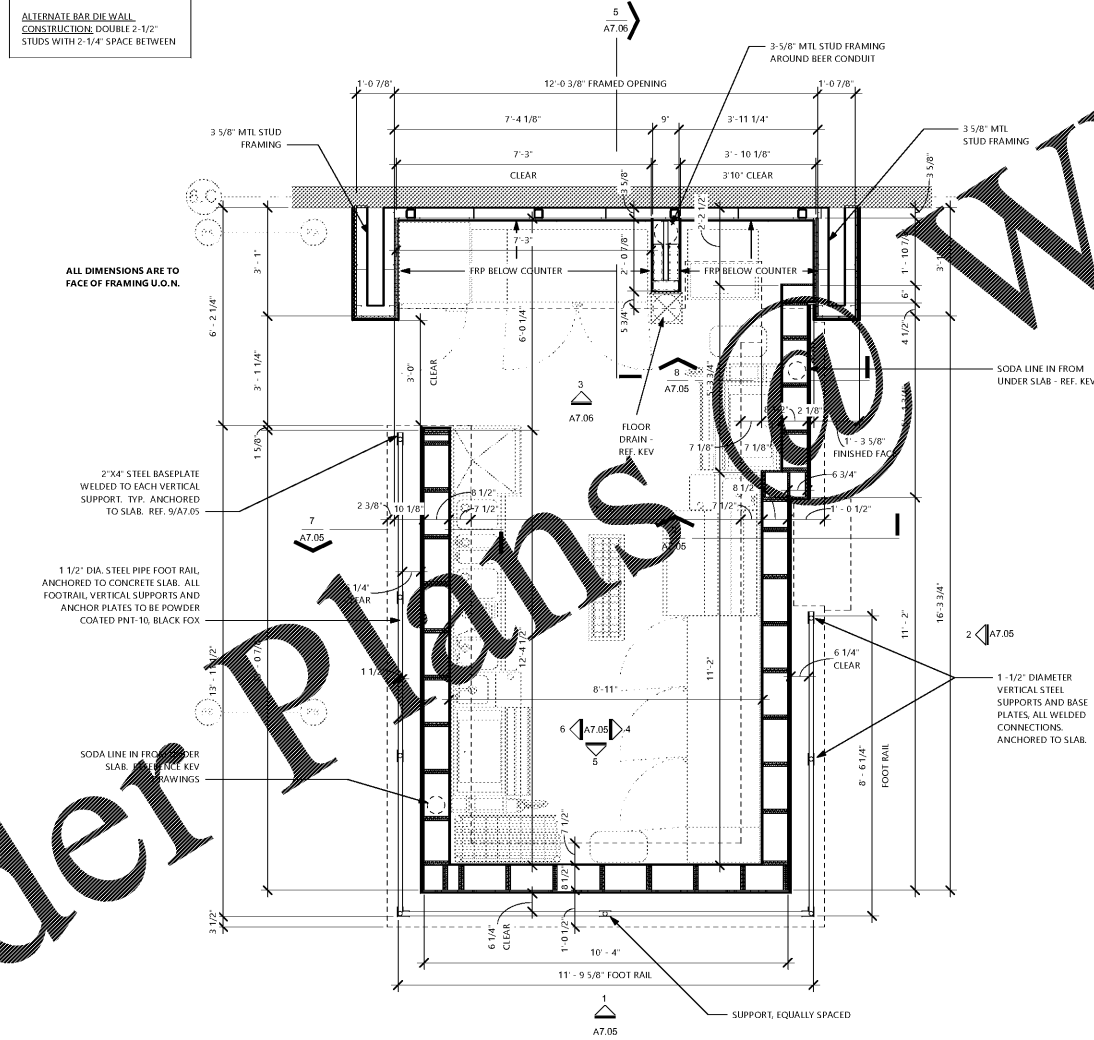
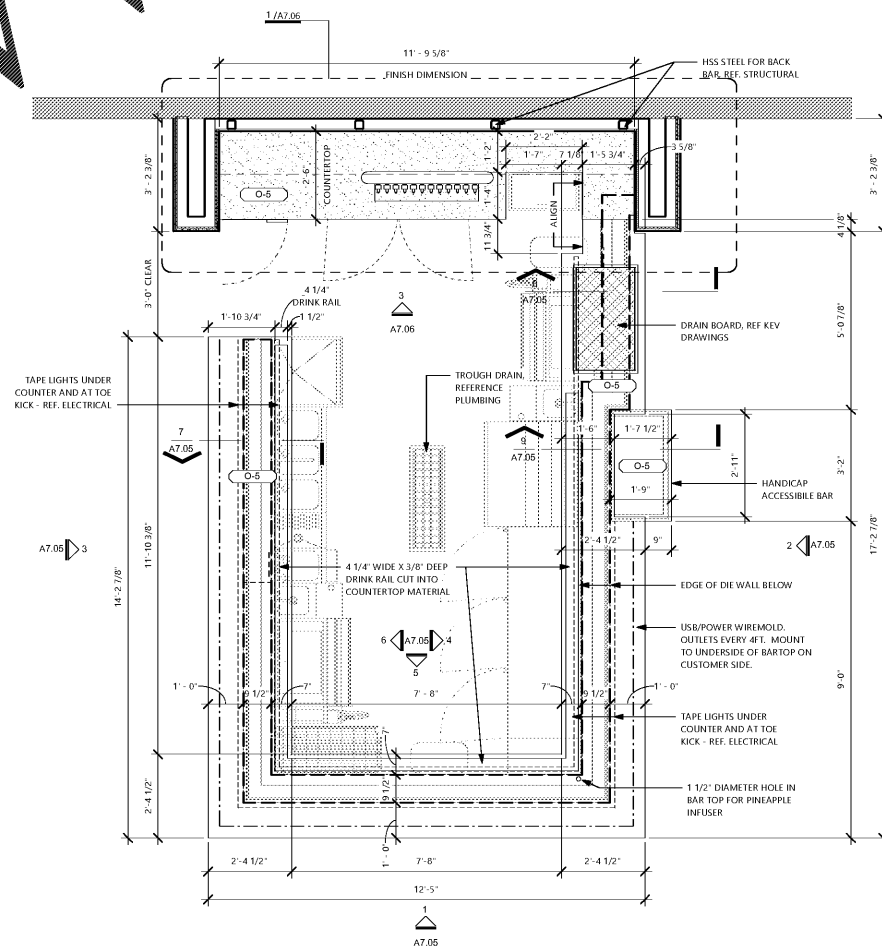


ALTERNATE BAR DIE WALL  
CONSTRUCTION: DOUBLE 2-1/2"  
STUDS WITH 2-1/4" SPACE BETWEEN



2 ENLARGED BAR PLAN - DIE WALL  
1/2\"/>



1 ENLARGED BAR PLAN  
1/2\"/>

CONSTRUCTION  
DOCUMENTS  
05/10/2018

No.	Description	Date

Steven A. Starr, AIA  
Lic. # RA013717  
Signature Date: 05/10/2018  
Date of expiration: 6/30/2019



INTERIOR  
COMPONENTS -  
BAR

**A7.04**

Order Plans

WWW.WWLD.COM