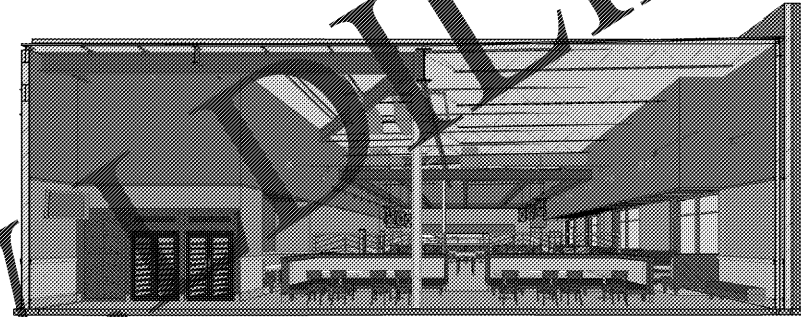
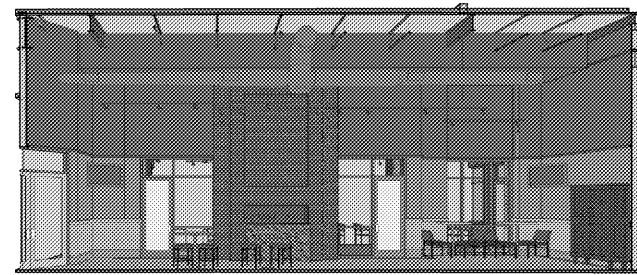


14 CORRIDOR ELEVATION 4
SW + 1'-0"

13 CORRIDOR ELEVATION 3
SW + 1'-0"

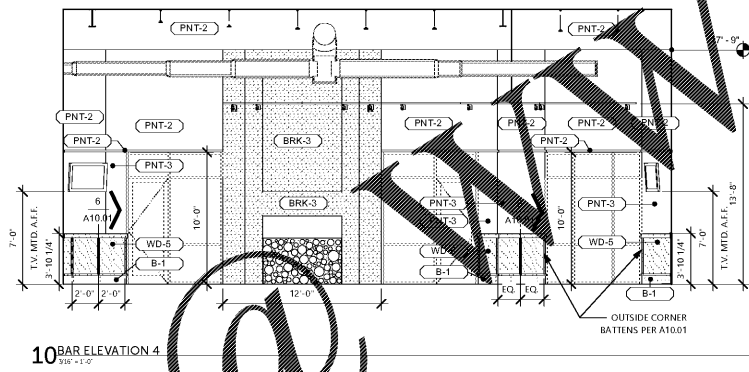
12 CORRIDOR ELEVATION 2
SW + 1'-0"

11 CORRIDOR ELEVATION 1
SW + 1'-0"

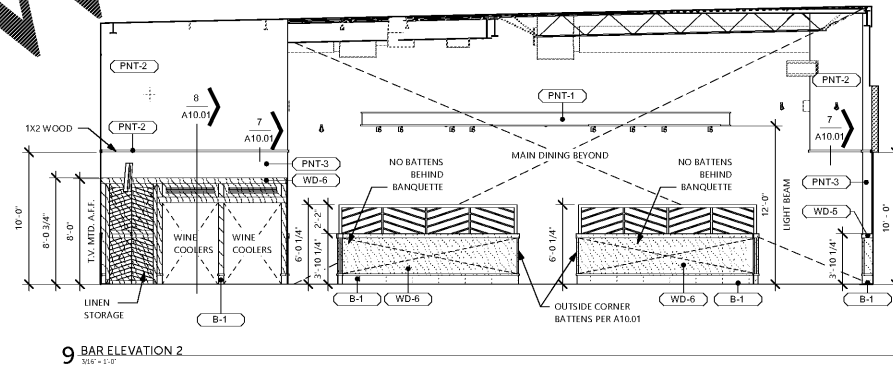


INTERIOR ELEVATION GENERAL NOTES

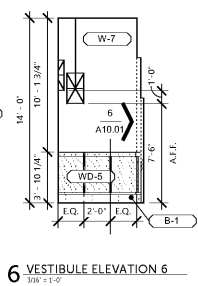
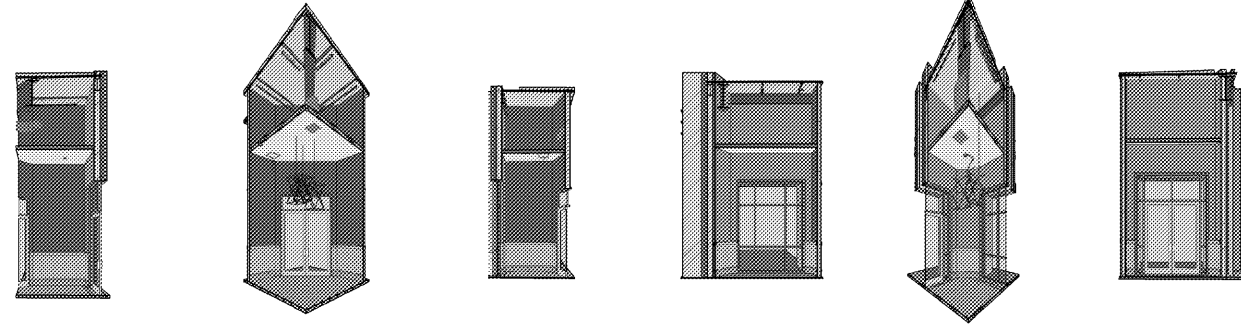
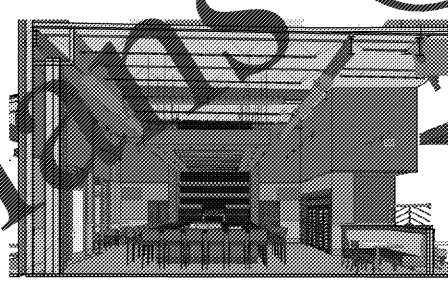
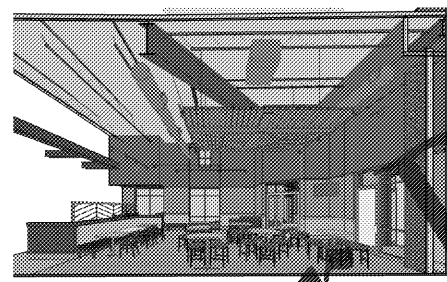
1. ALL EXPOSED DUCTWORK TO BE PNT-2, U.N.O.
2. ALL EXPOSED ROOF DECK AND STRUCTURE TO BE PNT-10, U.N.O.
3. REFERENCE A10.01 FOR TYPICAL WAINSCOT, BATTEN, AND CORNER BATTEN DETAILS/ASSEMBLY. PROVIDE CORNER BATTENS AT ALL OUTSIDE CORNERS OF MILLWORK/WAINSCOT.
4. ALIGN BATTENS TO CENTER OF TABLES ON MILLWORK WALLS. DO NOT INSTALL BATTENS BEHIND BACK OF BOOTHS OR BANQUETTES.
5. REFERENCE A10.02 FOR MILLWORK DIVIDER WALL CONSTRUCTION.
6. REFERENCE A11.05 FOR MAIN DINING CIRCULAR BOOTH ASSEMBLY.



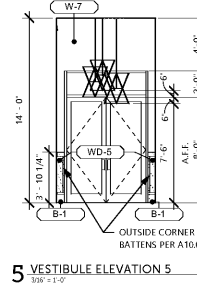
10 BAR ELEVATION 4
SW + 1'-0"



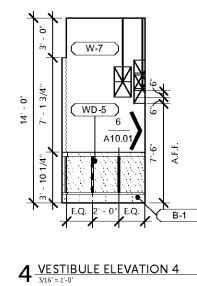
9 BAR ELEVATION 2
SW + 1'-0"



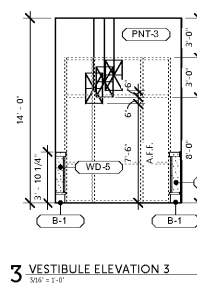
6 VESTIBULE ELEVATION 6
SW + 1'-0"



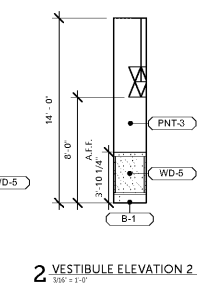
5 VESTIBULE ELEVATION 5
SW + 1'-0"



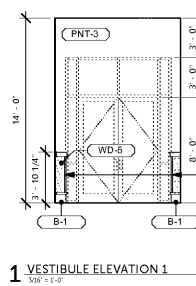
4 VESTIBULE ELEVATION 4
SW + 1'-0"



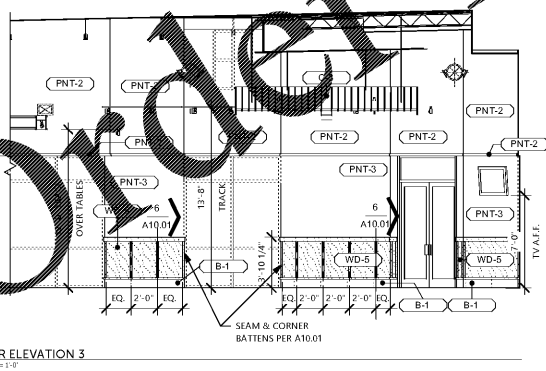
3 VESTIBULE ELEVATION 3
SW + 1'-0"



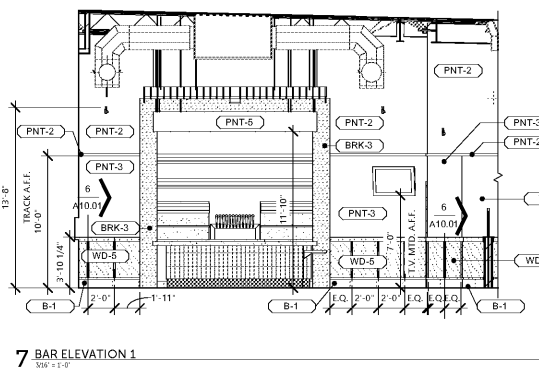
2 VESTIBULE ELEVATION 2
SW + 1'-0"



1 VESTIBULE ELEVATION 1
SW + 1'-0"



8 BAR ELEVATION 3
SW + 1'-0"



7 BAR ELEVATION 1
SW + 1'-0"

CONSTRUCTION DOCUMENTS
05/10/2018

No.	Description	Date

Steven A. Starr, AIA
Lic. # RA013717
Signature Date: 05/10/2018
Date of expiration: 6/30/2019



INTERIOR ELEVATIONS
A6.01
16FB008 | © Starr Design, PLLC