

EXTERIOR WALL SCHEDULE						
TYPE MARK	STUD SIZE	STUD MATERIAL	STUD HEIGHT	SOUND ATTENUATION	SIDE 1	SIDE 2
X1	6"	STEEL	DECK		5/8" EXTERIOR SHEATHING, PAINTED HARDIE PANEL	5/8" EXTERIOR SHEATHING, MASONRY
X1-A	6"	STEEL	DECK		5/8" EXTERIOR SHEATHING, PAINTED HARDIE PANEL	5/8" EXTERIOR SHEATHING, MASONRY
X2	6"	STEEL	DECK		5/8" EXTERIOR SHEATHING, PAINTED HARDIE PANEL	5/8" EXTERIOR SHEATHING, MASONRY

WALL SCHEDULE						
TYPE MARK	STUD SIZE	STUD MATERIAL	STUD HEIGHT	SOUND ATTENUATION	SIDE 1	SIDE 2
2SC-1CD	2 1/2"	STEEL	CEILING	No	5/8" CEMENTITIOUS BACKER BOARD FROM T.O. FLOOR TO 1'-0"; 5/8" FRT PLYWOOD FROM 1'-0" TO 9'-0"; M.R. GWP ABOVE 9'-0"	N/A
2SK-1KD MLWK	2 1/2"	STEEL	KNEE WALL	No	N/A	5/8" CEMENTITIOUS BACKER BOARD
2SK-2KD MLWK	2 1/2"	STEEL	KNEE WALL	No	5/8" CEMENTITIOUS BEHIND TILE BASE; 5/8" CDX PLYWOOD ABOVE	5/8" CEMENTITIOUS BEHIND TILE BASE; 5/8" CDX PLYWOOD ABOVE
3SC-1CD	3 5/8"	STEEL	DECK	No	N/A	5/8" CEMENTITIOUS BACKER BOARD FROM T.O. FLOOR TO 1'-0"; 5/8" FRT PLYWOOD FROM 1'-0" TO 9'-0"; M.R. GWP ABOVE 9'-0"
3SC-2CD	3 5/8"	STEEL	CEILING	No	5/8" CEMENTITIOUS BACKER BOARD FROM T.O. FLOOR TO 1'-0"; 5/8" FRT PLYWOOD FROM 1'-0" TO 9'-0"; M.R. GWP ABOVE 9'-0"	N/A
3SD-1DA	3 5/8"	STEEL	DECK	No	5/8" GYPSUM	N/A
3SD-1DD	3 5/8"	STEEL	DECK	No	5/8" CEMENTITIOUS BACKER BOARD FROM T.O. FLOOR TO 1'-0"; 5/8" FRT PLYWOOD FROM 1'-0" TO 9'-0"; M.R. GWP ABOVE 9'-0"	5/8" CEMENTITIOUS BACKER BOARD FROM T.O. FLOOR TO 1'-0"; 5/8" FRT PLYWOOD FROM 1'-0" TO 9'-0"; M.R. GWP ABOVE 9'-0"
3SD-1DF	3 5/8"	STEEL	DECK	No	5/8" CEMENTITIOUS BACKERBOARD BEHIND TILE; M.R. GYPSUM ABOVE	N/A
3SD-2DA	3 5/8"	STEEL	DECK	No	5/8" GYPSUM	N/A
3SD-2DB	3 5/8"	STEEL	DECK	Yes	5/8" GYPSUM	5/8" CEMENTITIOUS BACKER BOARD FROM T.O. FLOOR TO 1'-0"; 5/8" FRT PLYWOOD FROM 1'-0" TO 9'-0"; M.R. GWP ABOVE 9'-0"
3SD-2DC	3 5/8"	STEEL	DECK	Yes	5/8" GYPSUM	5/8" CEMENTITIOUS BACKERBOARD BEHIND TILE; M.R. GYPSUM ABOVE
3SD-2DD	3 5/8"	STEEL	DECK	Yes	5/8" CEMENTITIOUS BACKER BOARD FROM T.O. FLOOR TO 1'-0"; 5/8" FRT PLYWOOD FROM 1'-0" TO 9'-0"; M.R. GWP ABOVE 9'-0"	5/8" CEMENTITIOUS BACKER BOARD FROM T.O. FLOOR TO 1'-0"; 5/8" FRT PLYWOOD FROM 1'-0" TO 9'-0"; M.R. GWP ABOVE 9'-0"
3SD-2DE	3 5/8"	STEEL	DECK	No	5/8" CEMENTITIOUS BACKER BOARD FROM T.O. FLOOR TO 1'-0"; 5/8" FRT PLYWOOD FROM 1'-0" TO 9'-0"; M.R. GWP ABOVE 9'-0"	5/8" CEMENTITIOUS BACKERBOARD BEHIND TILE; M.R. GYPSUM ABOVE
3SD-2DF	3 5/8"	STEEL	DECK	Yes	5/8" CEMENTITIOUS BACKERBOARD BEHIND TILE; M.R. GYPSUM ABOVE	N/A
3SK-1KF	3 5/8"	STEEL	KNEE WALL	No	5/8" CEMENTITIOUS BACKERBOARD BEHIND TILE	N/A
3SK-2KE	3 5/8"	STEEL	KNEE WALL	No	5/8" CEMENTITIOUS BACKERBOARD	5/8" CEMENTITIOUS BEHIND TILE BASE; 5/8" FRT PLYWOOD ABOVE
3SD-1DF	6"	STEEL	DECK	Yes	5/8" CEMENTITIOUS BACKER BOARD FROM T.O. FLOOR TO 1'-0"; 5/8" FRT PLYWOOD FROM 1'-0" TO 9'-0"; M.R. GWP ABOVE 9'-0"	N/A
6SD-1DF	6"	STEEL	DECK	No	5/8" CEMENTITIOUS BACKER BOARD BEHIND TILE; M.R. GYPSUM ABOVE	N/A
6SD-2DA	6"	STEEL	DECK	No	5/8" GYPSUM	5/8" GYPSUM
6SD-2DB	6"	STEEL	DECK	Yes	5/8" GYPSUM	5/8" CEMENTITIOUS BACKER BOARD FROM T.O. FLOOR TO 1'-0"; 5/8" FRT PLYWOOD FROM 1'-0" TO 9'-0"; M.R. GWP ABOVE 9'-0"
6SK-2KF	6"	STEEL	KNEE WALL	No	5/8" CEMENTITIOUS BACKERBOARD	5/8" CEMENTITIOUS BACKERBOARD
6SD-2DE	6"	STEEL	OTHER	Yes	5/8" CEMENTITIOUS BACKER BOARD FROM T.O. FLOOR TO 1'-0"; 5/8" FRT PLYWOOD FROM 1'-0" TO 9'-0"; M.R. GWP ABOVE 9'-0"	5/8" CEMENTITIOUS BACKER BOARD FROM T.O. FLOOR TO 1'-0"; 5/8" FRT PLYWOOD FROM 1'-0" TO 9'-0"; M.R. GWP ABOVE 9'-0"
6SD-2DD	6"	STEEL	DECK	No	5/8" CEMENTITIOUS BACKER BOARD FROM T.O. FLOOR TO 1'-0"; 5/8" FRT PLYWOOD FROM 1'-0" TO 9'-0"; M.R. GWP ABOVE 9'-0"	5/8" CEMENTITIOUS BACKER BOARD FROM T.O. FLOOR TO 1'-0"; 5/8" FRT PLYWOOD FROM 1'-0" TO 9'-0"; M.R. GWP ABOVE 9'-0"

NOMINAL WALL WIDTH	STUD (RE: NOTE 1)	TOP TRACK (RE: NOTE 2)	KICKER SPACING	KICKER (RE: NOTE 3)	MAX. KICKER LENGTH	STUD WALL SCHEDULE WALLS THAT TERMINATE ABOVE CEILING	
						CONNECTION #2	CONNECTION #3
3 5/8"	3621125-27 AT 16" O.C.	3621125-33	4'-0" O.C.	3625125-27	9'-0"	(3)-#8 TEKS SCREWS	(6)-#8 TEKS SCREWS
3 5/8"	3625125-27 AT 16" O.C.	3621125-33	4'-0" O.C.	3625125-27 PLUS 3621125-27	16'-0"	(3)-#8 TEKS SCREWS	(6)-#8 TEKS SCREWS
3 5/8"	3625125-27 AT 16" O.C.	3621125-43	6'-0" O.C.	3625125-27	7'-0"	(4)-#8 TEKS SCREWS	(8)-#8 TEKS SCREWS
3 5/8"	3625125-27 AT 16" O.C.	3621125-43	6'-0" O.C.	3625125-27 PLUS 3621125-27	11'-0"	(4)-#8 TEKS SCREWS	(8)-#8 TEKS SCREWS
6"	6005125-27 AT 16" O.C.	6001125-33	4'-0" O.C.	6005125-27	9'-0"	(3)-#8 TEKS SCREWS	(6)-#8 TEKS SCREWS
6"	6005125-27 AT 16" O.C.	6001125-33	4'-0" O.C.	6005125-27 PLUS 6001125-27	18'-0"	(3)-#8 TEKS SCREWS	(6)-#8 TEKS SCREWS
6"	6005125-27 AT 16" O.C.	6001125-43	6'-0" O.C.	6005125-27	6'-0"	(4)-#8 TEKS SCREWS	(8)-#8 TEKS SCREWS
6"	6005125-27 AT 16" O.C.	6001125-43	6'-0" O.C.	6005125-27 PLUS 6001125-27	11'-0"	(4)-#8 TEKS SCREWS	(8)-#8 TEKS SCREWS

- NOTES:**
- STUDS SHALL BE SHEATHED FULL HEIGHT AT BOTH FACES.
 - TOP TRACK SHALL BE CONTINUOUS. WHERE A SPLICE IS NECESSARY, LOCATE SPLICE BETWEEN STUDS AND INSERT A MATCHING 1'-2" STUD SECTION TO REST HORIZONTALLY INSIDE TRACK. INSTALL (2)-#8 TEKS SCREWS EACH FLANGE EACH SIDE OF SPLICE.
 - CONNECT COMBINATION SECTION KICKERS AS A BOX SECTION WITH #8 TEKS SCREWS AT 12" O.C. EACH FLANGE.
 - KICKER ANGLE FROM VERTICAL MAY BE GREATER THAN 30 DEGREES BUT NOT LESS THAN 30 DEGREES.
 - RE: 10/51 FOR WALL FRAMING CONFIGURATION.
 - RE: ARCH. FOR WALLS REQUIRED TO EXTEND UP TO ROOF DECK.

PARTITION KEY

STUD SIZE: #XXX-XXX

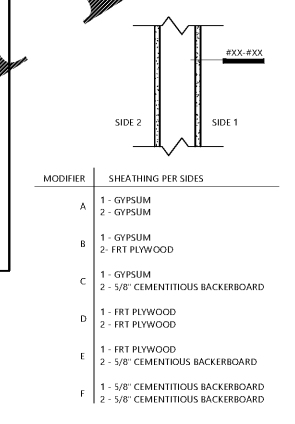
SHEATHING SIDE: #XXX-XXX

BASE WALL MATERIAL: #XXX-XXX

MODIFIER (SEE PARTITION TYPES): #XXX-XXX

SHEATHING HEIGHT: D = TO DECK, C = 6" ABOVE CEILING, K = KNEE WALL, O = OTHER

NOTE:
ALL WALLS WITH WAINSCOT TO HAVE THE FOLLOWING SUBSTRATES:
- CEMENTITIOUS BACKERBOARD BEHIND BASE MATERIAL
- CDX PLYWOOD SUBSTRATE BEHIND WOOD PANELING
- GYPSUM (FINISH AS SCHEDULED) ABOVE WAINSCOT, IF APPLICABLE



CONSTRUCTION DOCUMENTS
05/10/2018

No.	Description	Date

Steven A. Starr, AIA
Lic. # RA013717
Signature Date: 05/10/2018
Date of expiration: 6/30/2019

