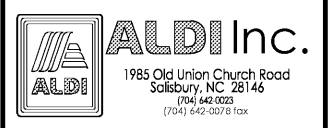


Issued:	Date:
A Permit Set	12/05/17
B Client Review Set	05/03/18
C	
D	
Revisions:	Date:
1	
2	
3	
4	
5	
6	
7	
8	
9	

DO NOT SCALE PLANS
 Copying, Printing, Software and other processes required to produce these prints can stretch or shrink the actual paper or layout. Therefore, scaling of this drawing may be inaccurate. Contact ins consultants with any need for additional dimensions or clarifications.

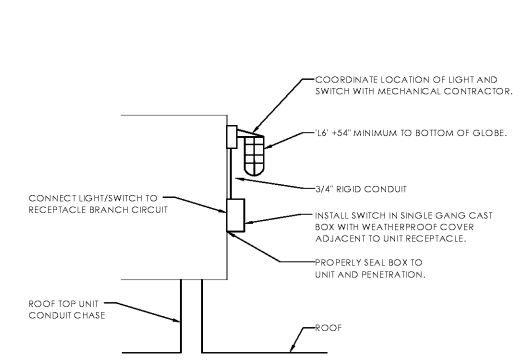
DRAWN BY: MEM
 REVIEWED BY: KFF

Seal



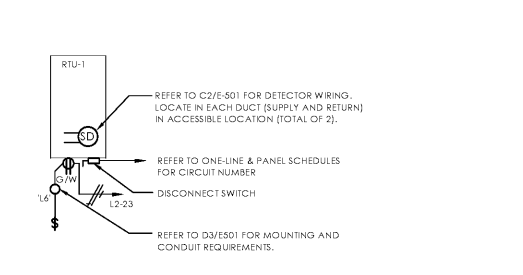
ALDI Inc. Store #: 65
 Charlotte, NC
 6113 Idlewild Road
 Charlotte, NC 28212
 Mecklenburg County
 Project Name & Location:

Electrical
 Details
 Drawing Name:
 Prototype Rls. 09/07/17
 Project No. 40452-13
 Type: LHSD-V8
 Scale: As Noted
 Drawing No. E-501



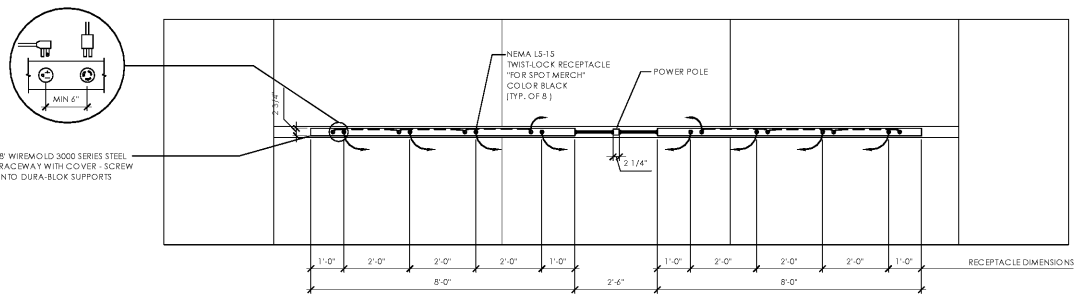
NOTES:
 1. REFER TO DETAIL C3/E-501 AND C2/E-501 FOR WIRING.

D3 RTU Service Light Mounting Detail
 SCALE: N.T.S.

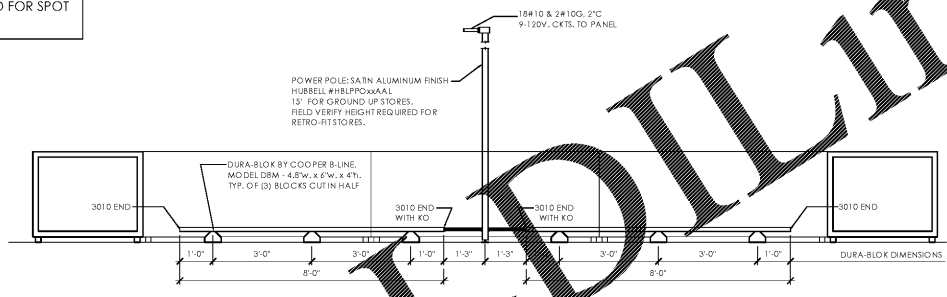


NOTES:
 1. COORDINATE LOCATION OF DISCONNECT WITH MECHANICAL CONTRACTOR. ROUTE CONDUIT THRU ROOF. SEAL ROOF PENETRATION WATER-TIGHT USING METHOD APPROVED BY ROOFING MANUFACTURER. DO NOT PENETRATE DRAIN PAN WITH CONDUITS.
 2. REFER TO SHEET E-201 FOR LOCATION.

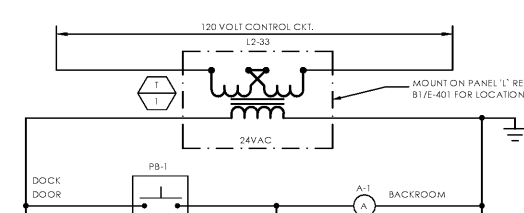
C3 RTU-1 & RTU-2 Detail
 SCALE: N.T.S.



NOTE:
 CONTRACTOR SHALL FIELD VERIFY RECEPTACLE TYPE REQUIRED FOR SPOT MERCHANDISER UNIT.

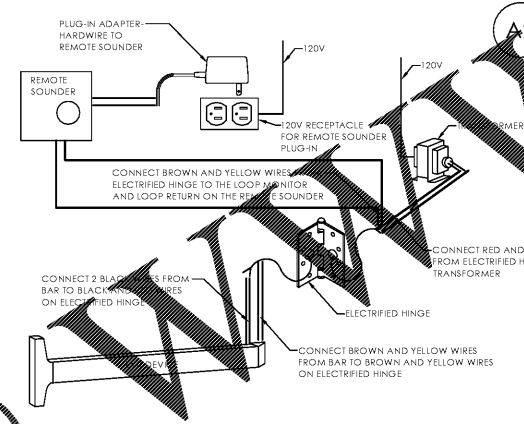


A2 Spot Merchandiser Raceway Detail
 SCALE: N.T.S.

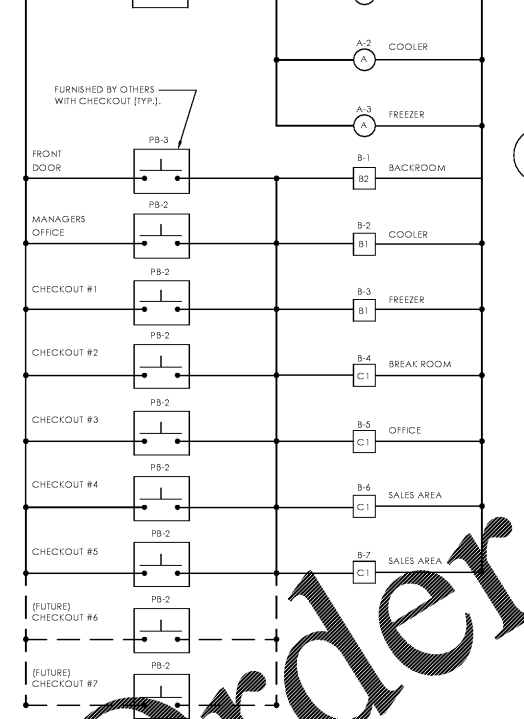


NOTES:
 1. REFER TO DETAIL C3/E-501 FOR LOCATION OF SMOKE DETECTORS.
 2. REFER TO DETAIL B1/E-401 FOR LOCATION OF REMOTE TEST STATIONS.
 3. SMOKE DETECTORS FURNISHED AND INSTALLED BY M.C. ALL WIRING BY E.C.

C2 Duct Smoke Detector Wiring Detail
 SCALE:

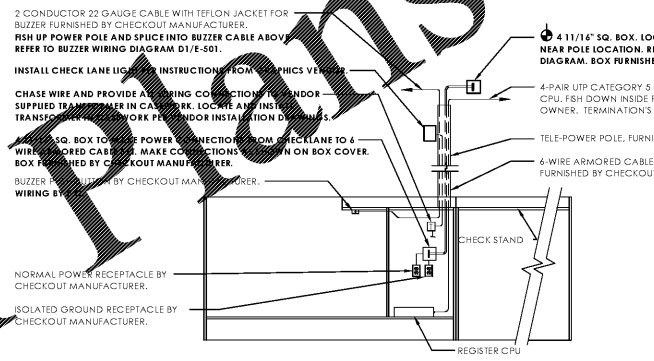


B1 Exit Device/Remote Sounder Detail
 SCALE:



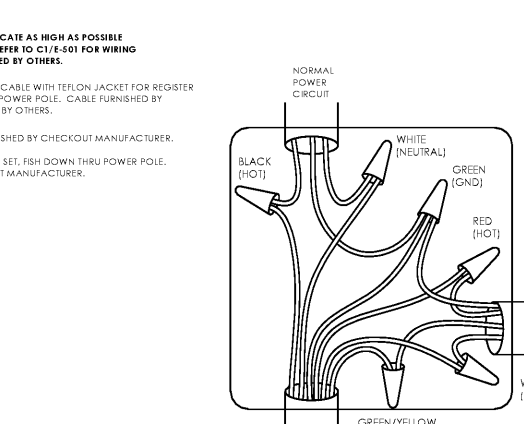
NOTES:
 1. ALL LOW VOLTAGE CONDUCTORS SHALL BE MINIMUM 18 GAUGE AND U.L. RATED FOR USE IN HANDLING ARENAS. WIRING SHALL BE IN CONDUIT WHERE EXPOSED IN CHECK ROOM AND SALES AREA.

D1 Bell and Buzzer Wiring Diagram
 SCALE: N.T.S.



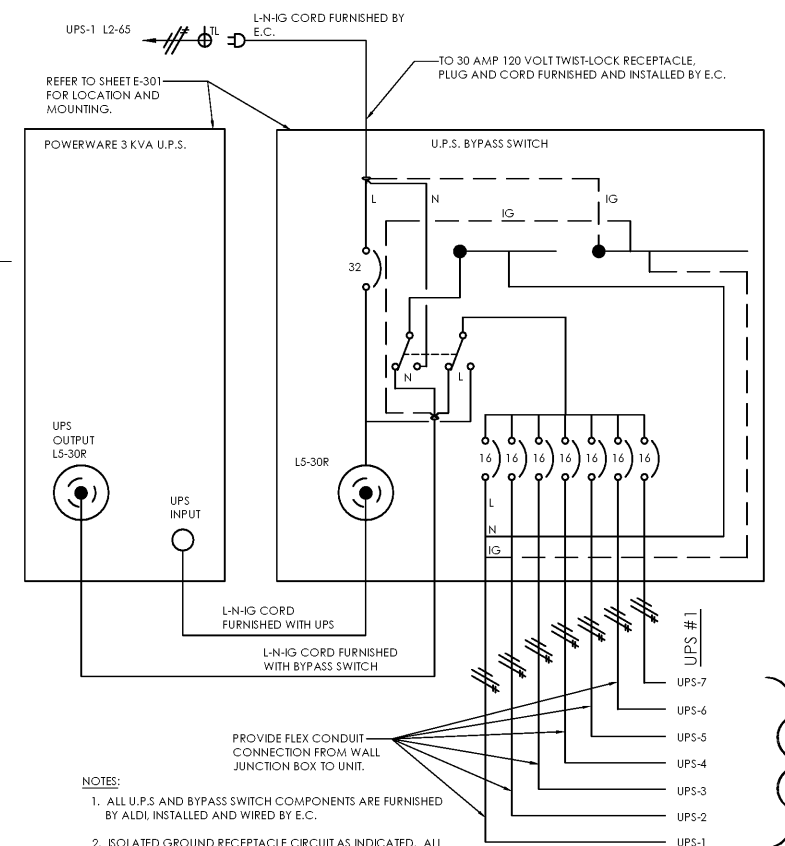
NOTES:
 1. BOLD PRINT TEXT IN DETAIL INDICATES WORK BY THE ELECTRICAL CONTRACTOR. LIGHT PRINT TEXT IN DETAIL INDICATES WORK BY OTHERS.
 2. ALL CONDUITS TO CHECKOUTS SHALL BE RUN AS HIGH AS POSSIBLE. COMBINE POWER CIRCUITS IN COMMON CONDUIT. PROVIDE DEDICATED 2\"/>

C1 Checkout Wiring Detail
 SCALE: N.T.S.



NOTES:
 1. ALL U.P.S. AND BYPASS SWITCH COMPONENTS ARE FURNISHED BY ALDI. INSTALLED AND WIRED BY E.C.
 2. ISOLATED GROUND RECEPTACLE CIRCUIT AS INDICATED. ALL WIRING SHALL BE MINIMUM #12 IN CONDUIT. REFER TO SHEET E-201 & E-301 FOR LOCATIONS.
 3. ALL UPS POWERED RECEPTACLES SHALL BE LABELED ON DEVICE FACEPLATE 'UPS-#' WHERE # = CIRCUIT NUMBER.

B1 Checkout Wiring Diagram
 SCALE: N.T.S.



NOTE 2

A1 UPS Wiring Diagram
 SCALE: N.T.S.

PLOTTED: 5/10/2018 11:56 AM