

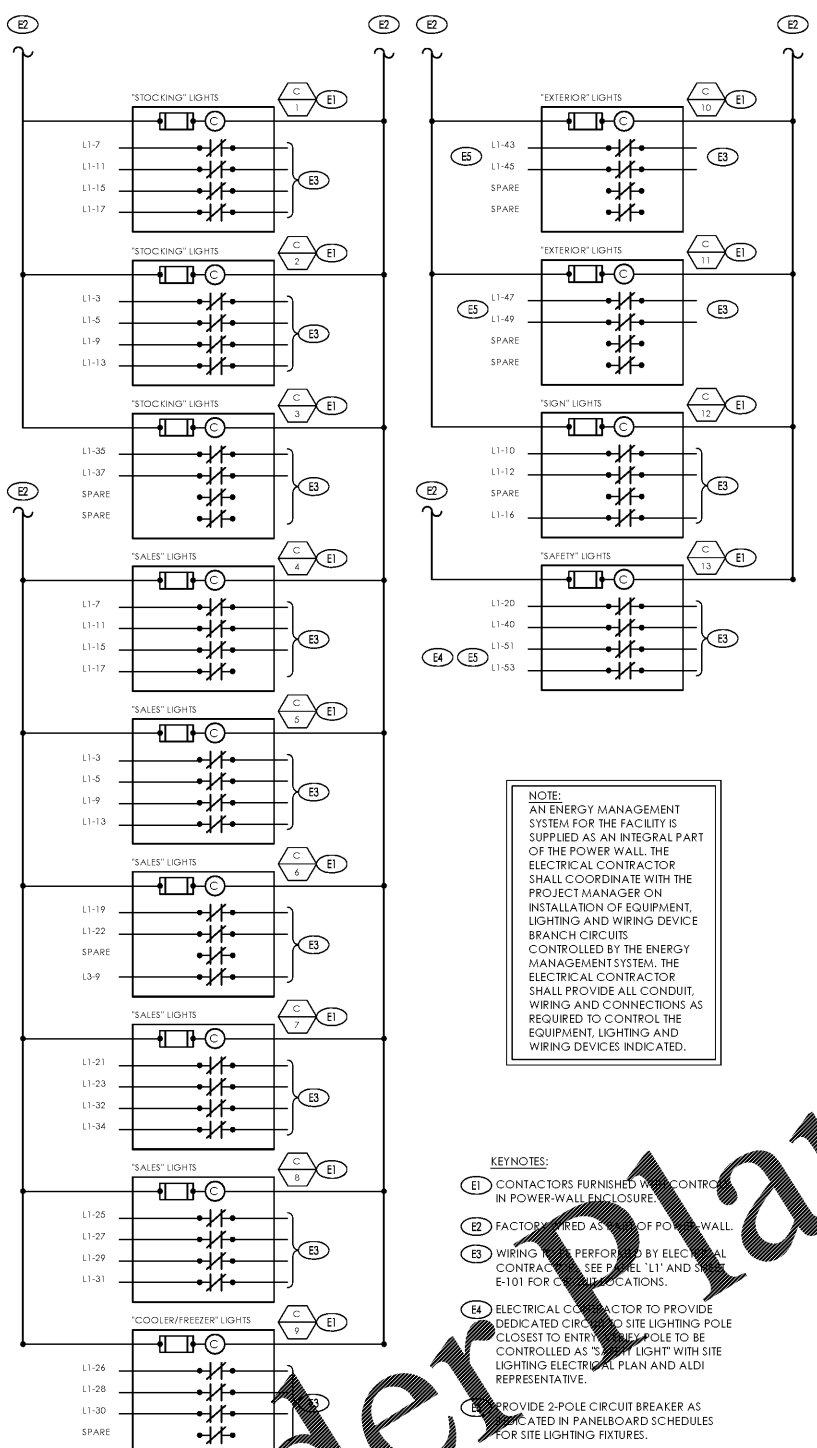
Revision table with columns for Revisions (A-D) and Dates. Includes entries for Permit Set (12/05/17), Client Review Set (05/03/18), and Bid Set (05/11/18).

LIGHTING LUMINAIRE SCHEDULE

- MOUNTING (M/G) KEY: RE - RECESSED, SF - SUSPENDED, CL - CEILING SURFACE, WL - WALL, UC - UNDERCABINET, CV - COVE, PL - POLE, O - OTHER (SEE REMARKS)
LAMP TYPE KEY: FL - FLUORESCENT, CF - COMPACT FLUORESCENT, IN - INCANDESCENT, LED - LIGHT EMITTING DIODE, HS - HIGH PRESSURE SODIUM, MH - METAL HALIDE, MV - MERCURY VAPOR, LV - LOW VOLTAGE, O - OTHER (SEE REMARKS)
LENS/COVER (L/L) KEY: A - 2 1/2" ACRYLIC, B - BLACK MILLIGROOVE, C - CLEAR ALZAK, D - PARABOLIC, E - ...

- NOTES: 1. CATALOG NUMBERS SHALL NOT BE CONSIDERED COMPLETE AND MATERIAL SHALL NOT BE ORDERED BY MANUFACTURER AND CATALOG NUMBER ONLY. 2. ALL LAMPS FOR THIS PROJECT SHALL BE FURNISHED BY MANUFACTURER WITH FIXTURES AND INSTALLED BY THE ELECTRICAL CONTRACTOR UNLESS OTHERWISE NOTED. 3. FOR NATIONAL ACCOUNTS PRICING CONTACT MIKE KRENER @ CREE LIGHTING MIKE.KRENER@CREE.COM PHONE: 262-504-5037. 4. NORDEON LIGHTING SYSTEM SHALL BE OWNER FURNISHED AND CONTRACTOR INSTALLED. 5. FOR NATIONAL ACCOUNTS PRICING CONTACT KEN BLUDER @ FACILITY SOLUTIONS GROUP. 6. LUMINAIRES ARE TYPICAL FOR ALDI STORES. 7. FIXTURE AND POLE SPECIFICATION SHALL BE VERIFIED WITH FINAL SITE PLANS AND ENGINEER FOR LOCAL REQUIREMENTS.

Main table containing lighting fixture specifications. Columns include FXT. NO., DESCRIPTION, FXT. SIZE, M/G., LAMPS (TYPE, QUANTITY & SIZE), VOLTS/BLS TYPE, L/L, MANUFACTURER, REMARKS, FXT. NO., DESCRIPTION, FXT. SIZE, M/G., LAMPS, VOLTS/BLS TYPE, L/L, MANUFACTURER, REMARKS.



NOTE: AN ENERGY MANAGEMENT SYSTEM FOR THE FACILITY IS SUPPLIED AS AN INTEGRAL PART OF THE POWER WALL. THE ELECTRICAL CONTRACTOR SHALL COORDINATE WITH THE PROJECT MANAGER ON INSTALLATION OF EQUIPMENT, LIGHTING AND WIRING DEVICE BRANCH CIRCUITS CONTROLLED BY THE ENERGY MANAGEMENT SYSTEM.

- KEYNOTES: E1 CONTACTORS FURNISHED AND CONTROL IN POWER-WALL ENCLOSURE. E2 FACTORY WIRE AS PART OF POLE/WALL. E3 WIRING SHALL BE PERFORMED BY ELECTRICAL CONTRACTOR. E4 ELECTRICAL CONTRACTOR TO PROVIDE DEDICATED CIRCUIT TO SITE LIGHTING POLE. E5 PROVIDE 2-POLE CIRCUIT BREAKER AS INDICATED IN PANELBOARD SCHEDULES FOR SITE LIGHTING FIXTURES.

D1 Lighting Control Diagram

Watermark: WWWWLDLINE.COM. Text: E.C. SHALL BE RESPONSIBLE TO VERIFY FIXTURE AND POLE SPECIFICATIONS WITH APPROVED PHOTOGRAPHIC/CIVIL DRAWINGS PRIOR TO ORDER BEING PLACED.

STRIP FIXTURE MOUNTING NOTES (BACK ROOM):

ALL FIXTURES SHALL BE POSITIONED PER THE DIMENSIONS ON DRAWING A-111. BACK ROOM: MOUNT FIXTURES PERPENDICULAR TO ROOF JOISTS WITH SUPPLIED AIRCRAFT CABLE KITS ATTACHED TO BOTTOM OF JOISTS AT 12'-0" AFF.

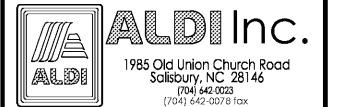
WIRE TRUNK MOUNTING NOTES (SALES FLOOR - GROUND UP):

ALL FIXTURES SHALL BE POSITIONED PER THE DIMENSIONS ON DRAWING A-111. SUSPENDED FIXTURE TRUNKS @ 13'-4" A.F.F. (UNLESS OTHERWISE NOTED) WITH SUPPLIED AIRCRAFT CABLE KITS AND SAMMYS SCREWS TO ROOF DECK PER MANUFACTURER'S RECOMMENDATIONS.

DO NOT SCALE PLANS

Copying, Printing, Software and other processes required to produce these prints can stretch or shrink the actual paper or layout. Therefore, scaling of this drawing may be inaccurate. Contact us consultants with any need for additional dimensions or clarifications.

DRAWN BY: MEM
REVIEWED BY: KFF



ALDI Inc. Store #: 65
Charlotte, NC
6113 Idlewild Road
Charlotte, NC 28212
Mecklenburg County
Project Name & Location:

Schedules & Diagrams
Drawing Name:
Prototype Rls. 09/07/17
Project No. 40452-13
Type: LHSD-V8
Scale: As Noted
Drawing No. E-102