

ENLARGED PLUMBING PLAN KEYNOTES (D1):

- P1 PROVIDE WATER CLOSET AND PIPING CONNECTIONS.
- P2 PROVIDE URINAL AND PIPING CONNECTIONS.
- P3 PROVIDE LAVATORY AND PIPING CONNECTIONS.
- P4 PROVIDE DRINKING FOUNTAIN AND PIPING CONNECTIONS.
- P5 PROVIDE SINK, GARBAGE DISPOSAL AND PIPING CONNECTIONS.
- P6 PROVIDE MOP BASIN AND PIPING CONNECTIONS.
- P7 PROVIDE SANITARY PIPING BELOW FLOOR.
- P8 PROVIDE FLOOR DRAIN WITH TRAP GUARD INSERT.
- P9 1 1/2" V UP, REFER TO SANITARY ISOMETRIC DIAGRAM D1/P-301 FOR CONTINUATION.
- P10 2" V UP, REFER TO SANITARY ISOMETRIC DIAGRAM D1/P-301 FOR CONTINUATION.
- P11 PROVIDE DISHWASHER AND PIPING CONNECTIONS. ROUTE DRAIN TO GARBAGE DISPOSAL OR SINK TAIL PIECE VIA CODE-COMPLIANT AIR GAP.
- P12 PROVIDE CLEANOUT.
- P13 REFER TO PLUMBING DRAWING P-101 FOR CONTINUATION.
- P14 PROVIDE 1" CONDENSATE DRAIN FROM FCU-1. ROUTE TO MOP BASIN. SHOW SLOPE AT 1/4" PER FOOT. TERMINATE DRAIN 4" ABOVE BASIN WITH AIR GAP PER CODE.

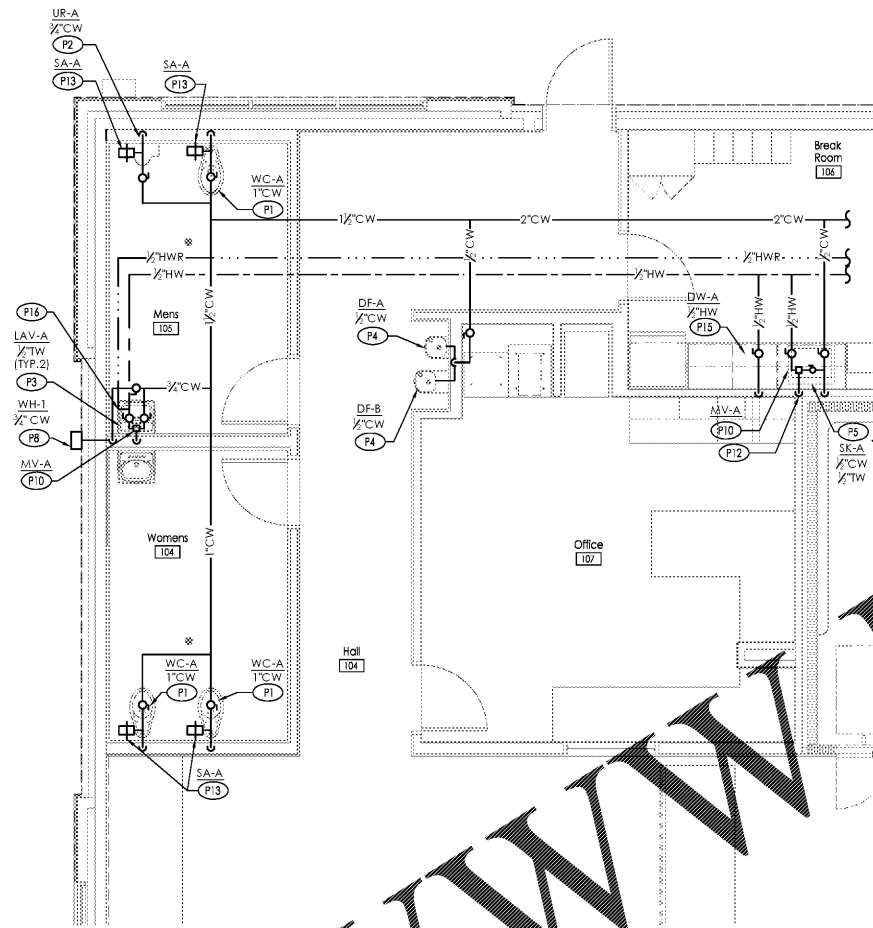
SANITARY NOTE:

A. PRIOR TO BID, P.C. AND S.C. SHALL VERIFY SANITARY SYSTEM LOCATION, ROUTING, PITCHES, INVERTS, SEES, AND TIE-IN POINT. ALL SEWER SYSTEM INFORMATION SHALL BE COORDINATED WITH ALL S.C. REFLECTIVE AT TIME OF WALK-THROUGH. INFORM PLUMBING ENGINEER OF ANY DISCREPANCIES FROM WORK SHOWN ON PLUMBING DRAWING PRIOR TO BID.

NOTE:

ALL ELEVATIONS ARE TAKEN FROM FINISHED FLOOR: 0'-0"

D1 Sanitary Enlarged Plan
SCALE: 1/4" = 1'-0"



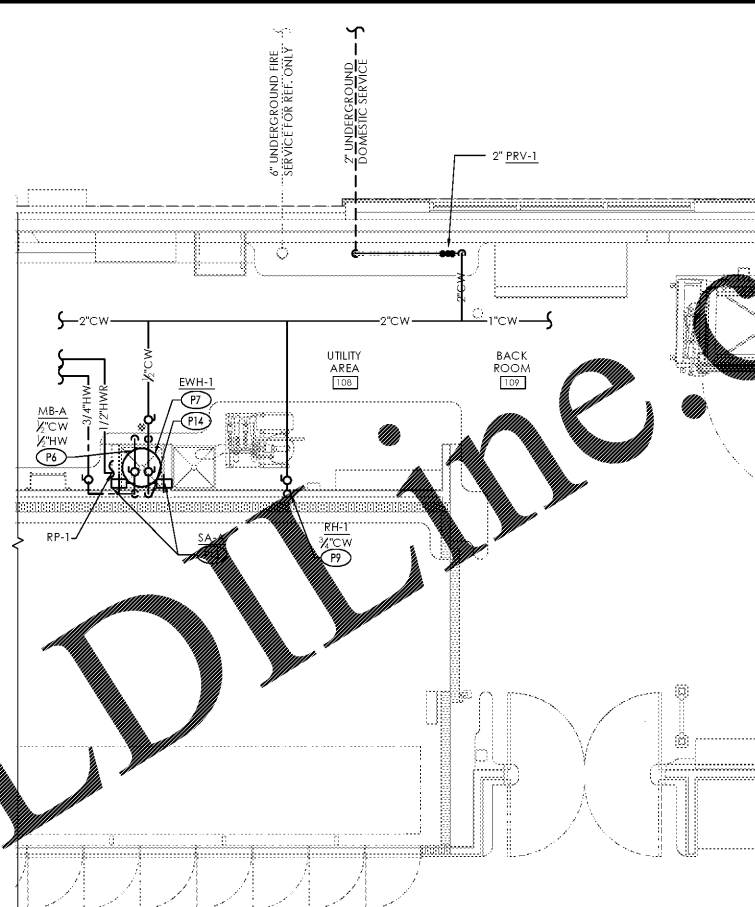
ENLARGED PLUMBING PLAN KEYNOTES (B1):

- P1 PROVIDE WATER CLOSET AND PIPING CONNECTIONS.
- P2 PROVIDE URINAL AND PIPING CONNECTIONS.
- P3 PROVIDE LAVATORY AND PIPING CONNECTIONS.
- P4 PROVIDE DRINKING FOUNTAIN AND PIPING CONNECTIONS.
- P5 PROVIDE SINK AND PIPING CONNECTIONS.
- P6 PROVIDE MOP BASIN AND PIPING CONNECTIONS.
- P7 PROVIDE ELECTRIC WATER HEATER. REFER TO ARCHITECTURAL DRAWINGS FOR WATER HEATER SHELF.
- P8 PROVIDE 3/4" ANTI-FREEZE LOCKABLE BOX WALL HYDRANT. MOUNT 18" ABOVE FINISHED GRADE.
- P9 PROVIDE ROOF HYDRANT AT A MINIMUM OF DISTANCE OF 4'-0" FROM ROOF HATCH OPENING.
- P10 PROVIDE TEMPERING MIXING VALVE. MOUNT ABOVE CEILING IN ACCESSIBLE LOCATION.
- P11 REFER TO SITE UTILITY DRAWINGS FOR CONTINUATION OF PIPING. P.C. SHALL MAKE FINAL CONNECTIONS TO SITE PIPING. COORDINATE WITH S.C. FOR CONNECTIONS.
- P12 PROVIDE 1/2" TW & 1/2" CW DN. IN WALL TO SINK.
- P13 PROVIDE WATER HAMMER SHOCK ABSORBER ABOVE UNIT SERVED. LOCATION SHOWN FOR CLARITY PURPOSES ONLY.
- P14 PROVIDE 1/2" CW & 1/2" HW DN. IN WALL TO MOP BASIN.
- P15 PROVIDE DISHWASHER AND PIPING CONNECTIONS.

GENERAL DOMESTIC WATER NOTES:

- A. REFER TO DETAIL A1/P-401 AND ISOMETRIC DIAGRAM B1/P-301.
- B. PROVIDE DOMESTIC CW & HW PIPING. PIPING SHALL BE COPPER OR CPVC WATER SUPPLY PIPING. CPVC PIPING SHALL BE APPROVED FOR POTABLE WATER SYSTEMS.
- C. ROUTE CW & HW SUPPLY PIPING ABOVE CEILING.
- D. ALL WATER PIPING SHALL BE ROUTED AWAY FROM ELECTRICAL EQUIPMENT WHENEVER POSSIBLE. REFER TO P-501 GENERAL NOTES FOR ROUTING INFORMATION.

B1 Domestic Water Enlarged Plan
SCALE: 1/4" = 1'-0"

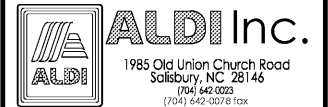


Issued:	Date:
A Permit Set	12/05/17
B Client Review Set	05/03/18
C Bid Set	05/11/18
D	
Revisions:	Date:
1	
2	
3	
4	
5	
6	
7	
8	
9	

DO NOT SCALE PLANS
Copying, Printing, Software and other processes required to produce these prints can stretch or shrink the actual paper or layout. Therefore, scaling of this drawing may be inaccurate. Contact our consultants with any need for additional dimensions or clarifications.

DRAWN BY: MEM
REVIEWED BY: KFF

Seal



ALDI Inc. Store #: 65
Charlotte, NC
6113 Idlewild Road
Charlotte, NC 28212
Mecklenburg County
Project Name & Location:

Enlarged Plumbing Plans Drawing Name:	
Prototype Rls. 09/07/17	Project No. 40452-13
Type: LHSD-V8	
	P-201
Scale: As Noted	Drawing No.

Order Plans @ WWW.LDILINE.COM