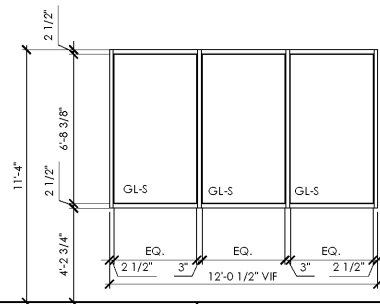
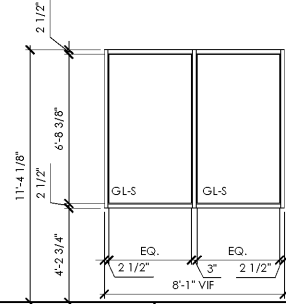


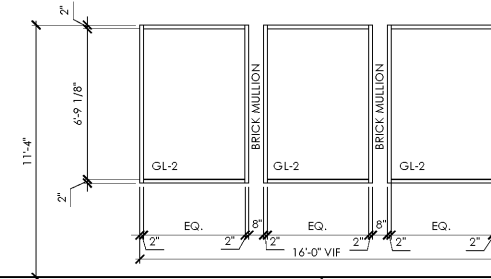
A STOREFRONT



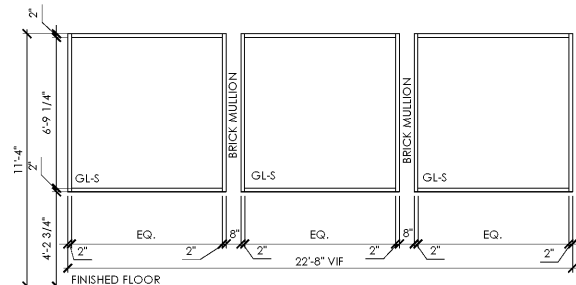
B STOREFRONT



C STOREFRONT



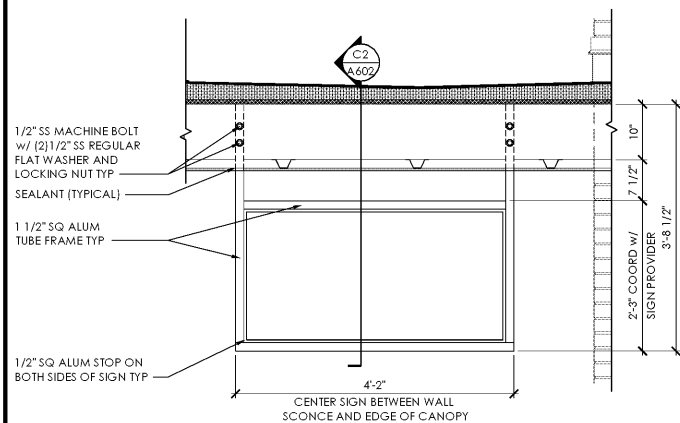
D STOREFRONT



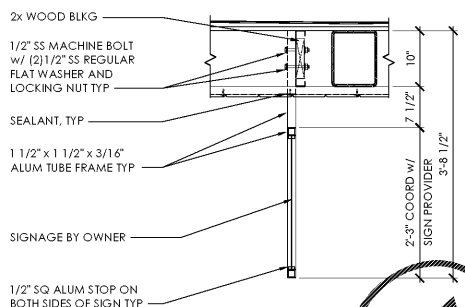
E STOREFRONT

F NOT USED

D3 Window Types
SCALE: 1/4" = 1'-0"

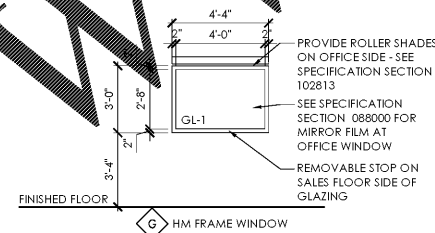


D2 Quarter Cart Sign Frame
SCALE: 1/4" = 1'-0"



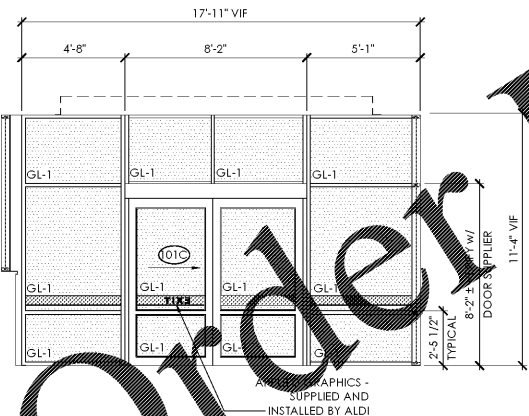
C2 Quarter Cart Sign Frame
SCALE: 1/4" = 1'-0"

B2 Office
SCALE: 1/4" = 1'-0"

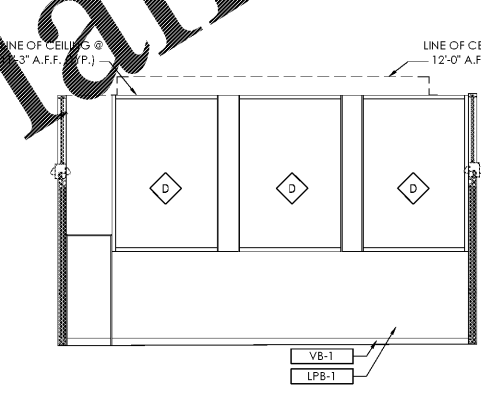


NOTE:
1. ALUMINUM FRAMING 1 3/4" (2" INSULATED) X 4 1/2" AND 4 1/2" X 4 1/2" (SEE PLAN).
2. SEE SPEC FOR GLASS TYPES
3. ALL STOREFRONT DIMENSIONS TO BE VERIFIED IN FIELD AND ADJUSTED AS NEEDED
4. SHADED GLAZED PANES TO BE SAFETY (TEMPERED) GLASS - SEE SPEC SECTION 088000.
5. ALL GLASS THERMAL CHARACTERISTICS SHALL COMPLY WITH ALL "SHGC" REQUIREMENTS AS LISTED IN THE COMCHECK SEE SHEET G-003.

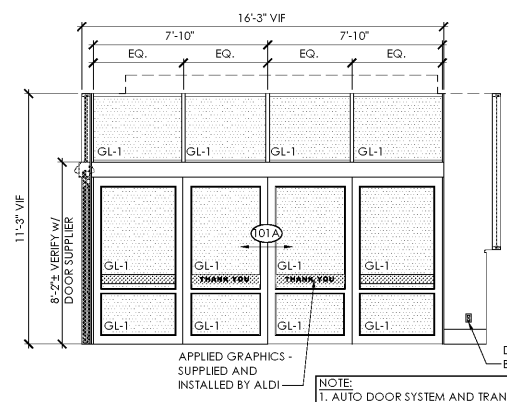
GLAZING SCHEDULE:			
MAT. KEY	KEY DESCRIPTION	DESCRIPTION - COLOR	REMARKS
GL-1	FULLY TEMPERED FLOAT GLASS	CLEAR	SEE PROJECT MANUAL - SECTION 088000
GL-2	LOW E, INSULATING GLASS	CLEAR	SEE PROJECT MANUAL - SECTION 088000
GL-5	CERAMIC FRIT-COATED SPANDREL GLASS	COLOR CHARCOAL	SEE PROJECT MANUAL - SECTION 088000



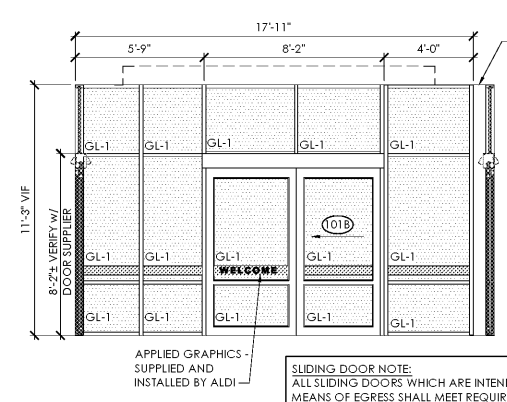
D1 Vestibule
SCALE: 1/4" = 1'-0"



C1 Vestibule
SCALE: 1/4" = 1'-0"



B1 Vestibule
SCALE: 1/4" = 1'-0"



A1 Vestibule
SCALE: 1/4" = 1'-0"

Order Plans @

WWW.LDILine.com

Issued:	Date:
A Permit Set	12/05/17
B Client Review Set	05/03/18
C Bid Set	05/11/18
D	
Revisions:	Date:
1	
2	
4	
5	
7	
8	
9	

DO NOT SCALE PLANS
Copying, printing, software and other processes required to produce these prints can stretch or shrink the actual paper or layout. Therefore, scaling of this drawing may be inaccurate. Contact ms consultants with any need for additional dimensions or clarifications.

ms consultants, inc.
engineers, architects, planners
920 Main Campus Drive
Suite 430
Raleigh, NC 27606-5213
phone 919.772.5565
fax 919.779.2308

DRAWN BY: MEM/KNW
REVIEWED BY: JAB

Seal

ALDI Inc.
1985 Old Union Church Road
Salisbury, NC 28146
(704) 642-0023
(704) 642-0078 fax

ALDI Inc. Store #: 65
Charlotte, NC
6113 Idlewild Road
Charlotte, NC 28212
Mecklenburg County
Project Name & Location:

Window Elevations & Details
Drawing Name:

Prototype Rls. 09/07/17	Project No. 40452-13
Type: LHSD-V8	
	A-602
Scale: As Noted	Drawing No.