

| DOOR NO. | DOOR SCHEDULE     |        |        |       |       |      |            |       |      |      | DOOR NO. | ROOM NAME  |            |            |         |                                                                                                                                                                                                              |      |            |
|----------|-------------------|--------|--------|-------|-------|------|------------|-------|------|------|----------|------------|------------|------------|---------|--------------------------------------------------------------------------------------------------------------------------------------------------------------------------------------------------------------|------|------------|
|          | DOOR              |        |        | FRAME |       |      | DETAIL     |       |      |      |          |            |            |            |         |                                                                                                                                                                                                              |      |            |
|          | WIDTH             | HEIGHT | THICK. | ELEV. | MAT.  | FIN. | FIRE LABEL | ELEV. | MAT. | FIN. |          |            | FIRE LABEL | HDW. GROUP | HEAD    | JAMB                                                                                                                                                                                                         | SILL | REMARK     |
| 101A     | +/- 16'-0" V.I.F. | 8'-2"  | --     | DD    | ALUM. | --   | --         | ALUM. | --   | --   | --       | 100        | --         | --         | C1/A501 | DOOR ELEVATIONS ON THIS SHEET. SEE SHEET A504 FOR JAMB DETAILS - FIXED SIDELIGHT PANEL SHALL MAKE UP DIFFERENCE IN MASONRY OPENING; DOORS WILL HAVE 1/2" THRESHOLD TO COMPENSATE FOR THICKNESS OF ENTRY MAT. | 101A | VESTIBULE  |
| 101B     | +/- 8'-2" V.I.F.  | 8'-2"  | --     | EE    | ALUM. | --   | --         | ALUM. | --   | --   | --       | 100        | --         | --         | C1/A501 |                                                                                                                                                                                                              | 101B | VESTIBULE  |
| 101C     | +/- 8'-2" V.I.F.  | 8'-2"  | --     | EE    | ALUM. | --   | --         | ALUM. | --   | --   | --       | 100        | --         | --         | C1/A501 |                                                                                                                                                                                                              | 101C | VESTIBULE  |
| 102A     | 7'-0"             | 8'-0"  | 1 1/2" | CC    | POLY  | --   | --         | E     | H.M. | 1    | --       | SEE REMARK | 6/A601     | 7/A601     | A2/A513 | HARDWARE BY DOOR SUPPLIER FRAME BY G.C.                                                                                                                                                                      | 102A | SALES      |
| 102B     | 4'-0"             | 7'-0"  | 1 3/4" | BB    | H.M.  | 1/2  | --         | D     | H.M. | 1/2  | --       | 500        | 1/A601     | 2/A601     | 3/A601  | INSUL. EXT. DOOR - PREPARE DOOR FRAME FOR ALARMED EXIT DEVICE BEFORE GROUTING SOLID. DOOR FRAME TO CONTAIN CONDUIT AND ELECTRIFIED HINGE.                                                                    | 102B | SALES      |
| 103      | 3'-0"             | 7'-0"  | 1 3/4" | AA    | H.M.  | 1    | --         | A     | H.M. | 1    | --       | 200        | 4/A601     | 5/A601     | --      | SEE REMARKS FOR 102B; OMIT REMOTE SOUNDER & CONNECT TO RS FOR DOOR 102B.                                                                                                                                     | 103  | WOMENS     |
| 104      | 3'-0"             | 7'-0"  | 1 3/4" | AA    | H.M.  | 1/2  | --         | B     | H.M. | 1/2  | --       | 500        | 1/A601     | 2/A601     | 3/A601  |                                                                                                                                                                                                              | 104  | HALL       |
| 105      | 3'-0"             | 7'-0"  | 1 3/4" | AA    | H.M.  | 1    | --         | A     | H.M. | 1    | --       | 200        | 4/A601     | 5/A601     | --      |                                                                                                                                                                                                              | 105  | MENS       |
| 106A     | 3'-0"             | 7'-0"  | 1 3/4" | AA    | H.M.  | 1    | --         | A     | H.M. | 1    | --       | 401        | 4/A601     | 5/A601     | --      |                                                                                                                                                                                                              | 106A | BREAK ROOM |
| 106B     | 3'-0"             | 7'-0"  | 1 3/4" | AA    | H.M.  | 1    | --         | A     | H.M. | 1    | --       | 401        | 4/A601     | 5/A601     | --      |                                                                                                                                                                                                              | 106B | BREAK ROOM |
| 107      | 3'-0"             | 7'-0"  | 1 3/4" | AA    | H.M.  | 1    | --         | A     | H.M. | 1    | --       | 400        | 4/A601     | 5/A601     | --      |                                                                                                                                                                                                              | 107  | OFFICE     |
| 109A     | 3'-0"             | 7'-0"  | 1 3/4" | AA    | H.M.  | 1/2  | --         | B     | H.M. | 1/2  | --       | 600        | 1/A601     | 2/A601     | 3/A601  | SEE REMARKS FOR 102B                                                                                                                                                                                         | 109A | BACK ROOM  |
| 109B     | 8'-2"             | 8'-1"  | --     | FF    | STL   | 3/2  | --         | --    | --   | 3/2  | --       | SEE REMARK | 8/A601     | 9/A601     | 10/A601 | HARDWARE BY DOOR SUPPLIER                                                                                                                                                                                    | 109B | BACK ROOM  |

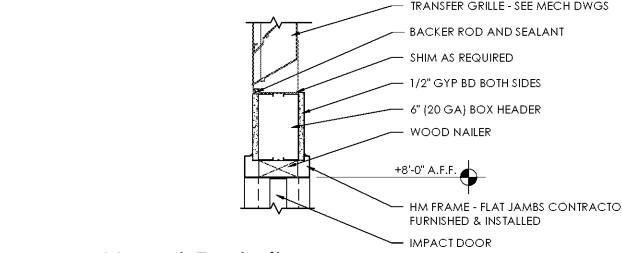
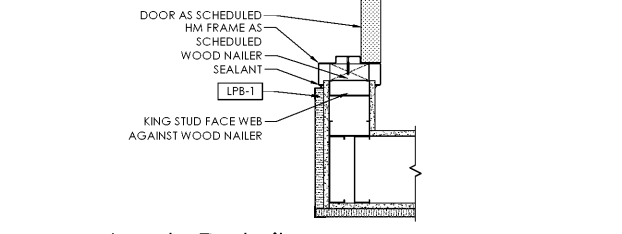
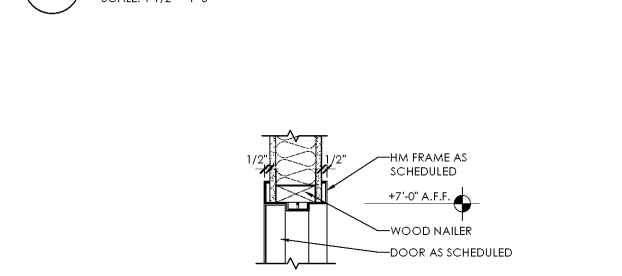
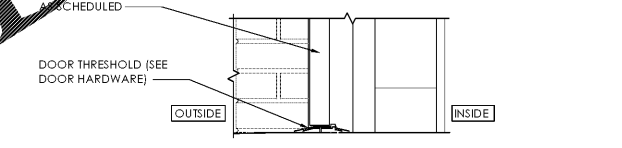
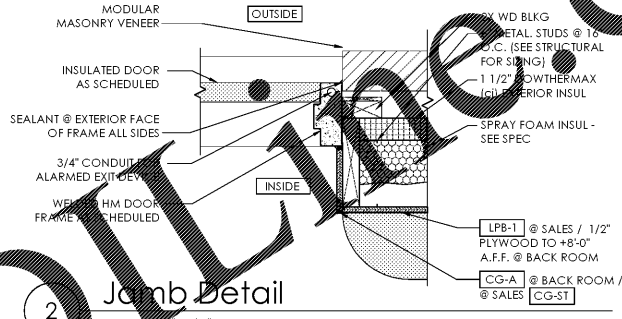
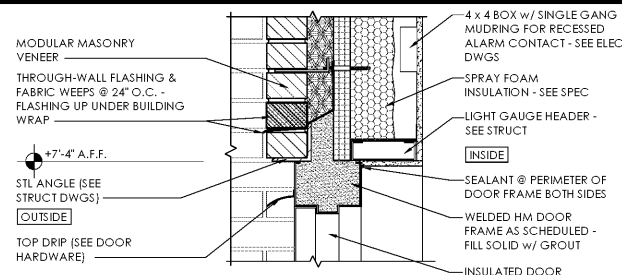
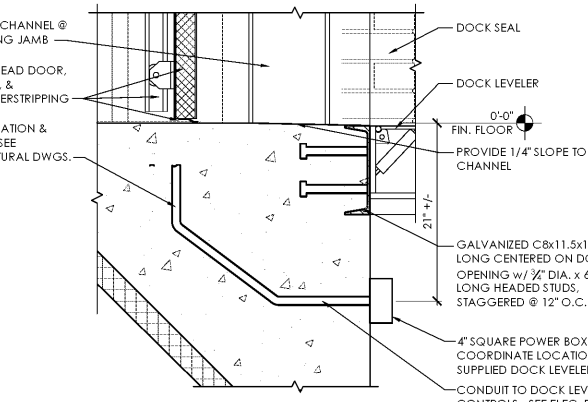
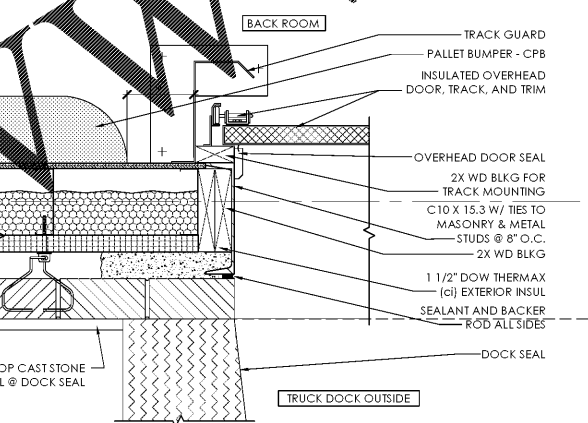
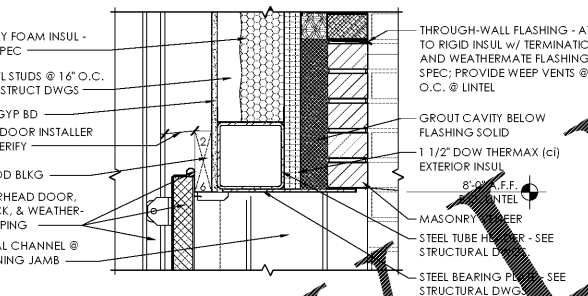
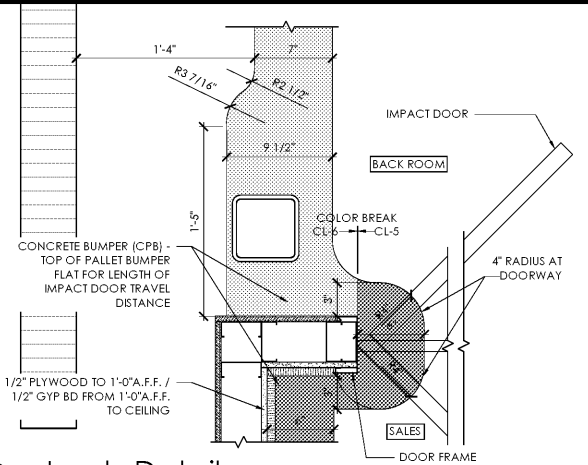
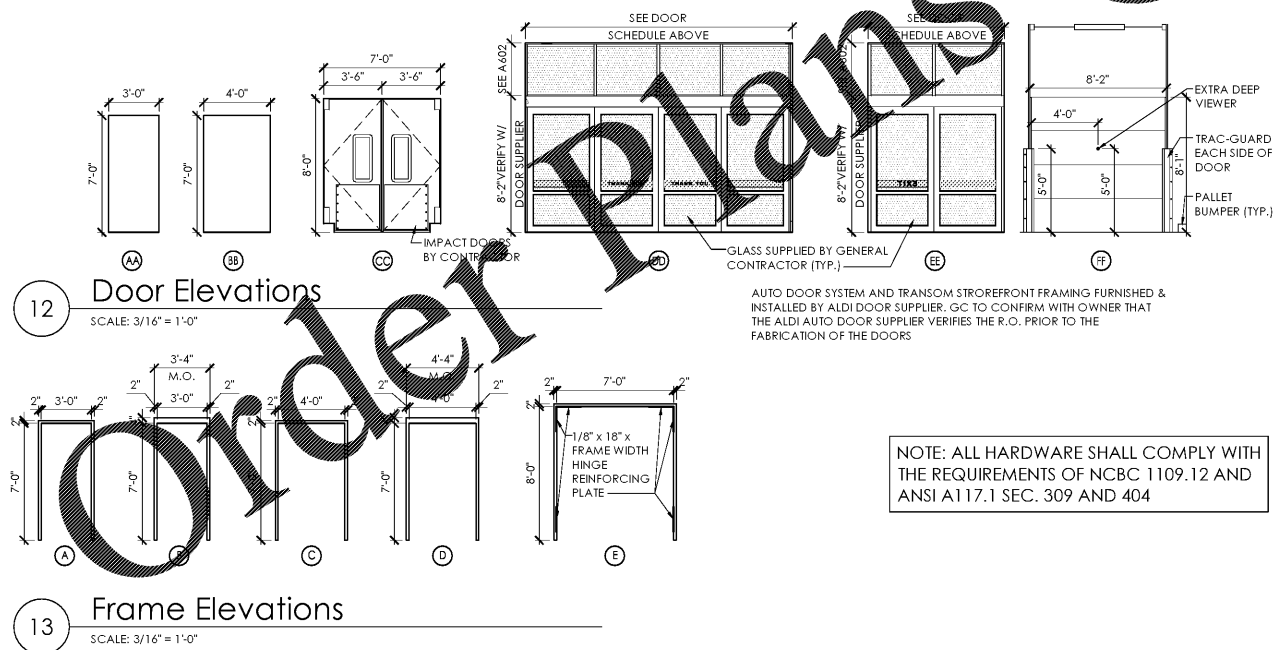
| LEGEND |                   |
|--------|-------------------|
| H.M.   | HOLLOW METAL      |
| ALUM.  | ANODIZED ALUMINUM |
| POLY   | POLYETHYLENE      |

**NOTE:**  
SEE SHEET A603 FOR FINISH SCHEDULES  
SEE SHEETS A212-A214 & E201 FOR POWER REQUIREMENTS & COMPONENT LOCATIONS AT DOORS 102B, 104, 109A & 109C.

| KEYNOTES - FINISHES (SEE A-603 COLOR/MATERIAL SCHEDULE) |              |                          |  |
|---------------------------------------------------------|--------------|--------------------------|--|
| 1                                                       | PF-3 / CL-5  | SEMGLOSS - INTERIOR SIDE |  |
| 2                                                       | PF-19 / CL-5 | SEMGLOSS - EXTERIOR SIDE |  |
| 3                                                       | PREFINISHED  | WHITE - INTERIOR SIDE    |  |

| DOOR HARDWARE SET NO. 100                                               |                         |                                                  |                        |        |
|-------------------------------------------------------------------------|-------------------------|--------------------------------------------------|------------------------|--------|
| DOOR NO. 101A, 101B, 101C; PROVIDED BY OWNER.                           |                         |                                                  |                        |        |
| DOOR HARDWARE SET NO. 200                                               |                         |                                                  |                        |        |
| DOOR NO. 103, 105; MENS & WOMENS; EACH TO HAVE THE FOLLOWING:           |                         |                                                  |                        |        |
| No.                                                                     | Item                    | Description                                      | Manufacturer           | Finish |
| 3                                                                       | HINGES                  | FBB179-NRP                                       | STANLEY HARDWARE (STH) | 626    |
| 1                                                                       | PRIVACY LOCK            | ND405                                            | SCHLAGE (SCH)          | 626    |
| 1                                                                       | CLOSER                  | 8501-BF-AL                                       | NORTON DOOR (NDC)      | AL     |
| 1                                                                       | WALL STOP               | 402-1/2                                          | IVES (IVS)             | AL     |
| 1                                                                       | 12" H. PROTECTIVE PLATE | 8400                                             | IVES (IVS)             | 630    |
| DOOR HARDWARE SET NO. 400                                               |                         |                                                  |                        |        |
| DOOR NO. 107 & 110A; OFFICE & FUTURE SPACE; EACH TO HAVE THE FOLLOWING: |                         |                                                  |                        |        |
| No.                                                                     | Item                    | Description                                      | Manufacturer           | Finish |
| 3                                                                       | HINGES                  | FBB179-NRP                                       | STANLEY HARDWARE (STH) | 626    |
| 1                                                                       | STOREROOM LOCK          | ND808DC                                          | SCHLAGE (SCH)          | 626    |
| 1                                                                       | CLOSER                  | 8501-BF-AL                                       | NORTON DOOR (NDC)      | AL     |
| 1                                                                       | WALL STOP               | 402-1/2                                          | IVES (IVS)             | AL     |
| 1                                                                       | DOOR VIEWER             | 698                                              | IVES (IVS)             | AL     |
| 1                                                                       | 42" H. PROTECTIVE PLATE | 8400                                             | IVES (IVS)             | 630    |
| DOOR HARDWARE SET NO. 401                                               |                         |                                                  |                        |        |
| DOOR NO. 106 & 106A; BREAK ROOM TO HAVE THE FOLLOWING:                  |                         |                                                  |                        |        |
| No.                                                                     | Item                    | Description                                      | Manufacturer           | Finish |
| 3                                                                       | HINGES                  | FBB179-NRP                                       | STANLEY HARDWARE (STH) | 626    |
| 1                                                                       | PRIVACY LOCK            | SCHLAGE L9485P 06A X L283-722 X 2 EMERGENCY KEYS | SCHLAGE (SCH)          | 626    |
| 1                                                                       | CLOSER                  | 8501-BF-AL                                       | NORTON DOOR (NDC)      | AL     |
| 1                                                                       | WALL STOP               | 402-1/2                                          | IVES (IVS)             | AL     |
| 1                                                                       | DOOR VIEWER             | 698                                              | IVES (IVS)             | AL     |
| 1                                                                       | 42" H. PROTECTIVE PLATE | 8400                                             | IVES (IVS)             | 630    |

| DOOR HARDWARE SET NO. 500                             |                     |                                                                                   |                        |               |
|-------------------------------------------------------|---------------------|-----------------------------------------------------------------------------------|------------------------|---------------|
| DOOR NO. 102B, 104; EGRESS TO HAVE THE FOLLOWING:     |                     |                                                                                   |                        |               |
| No.                                                   | Item                | Description                                                                       | Manufacturer           | Finish        |
| 2                                                     | HINGES              | FBB191(32D)-NRP                                                                   | STANLEY HARDWARE (STH) | 630           |
| 1                                                     | HINGE               | EW8-626                                                                           | DETEX                  | 626           |
| 1                                                     | THRESHOLD           | 896N                                                                              | NATIONAL GUARD (NGP)   | AL            |
| 1                                                     | EXIT/PANIC          | V40EX4XDxC7X KS(36"or48") - INCLUDES TRANSFORMER PP-5152-3                        | DETEX                  | 628           |
| 1                                                     | REMOTE SOUNDER      | CS-29405                                                                          | DETEX                  | GREY          |
| 1                                                     | CLOSER              | 8501-BF-AL                                                                        | NORTON DOOR (NDC)      | AL            |
| 1                                                     | DRIP STRIP          | 16A                                                                               | NATIONAL GUARD (NGP)   | CLEAR ANOD AL |
| 1                                                     | STICK-ON GASKET     | 5060B                                                                             | NATIONAL GUARD (NGP)   | CLEAR ANOD AL |
| 1                                                     | DOOR SWEEP          | 9605A                                                                             | NATIONAL GUARD (NGP)   | CLEAR ANOD AL |
| DOOR HARDWARE SET NO. 600                             |                     |                                                                                   |                        |               |
| DOOR NO. 109A; BACKROOM EGRESS TO HAVE THE FOLLOWING: |                     |                                                                                   |                        |               |
| No.                                                   | Item                | Description                                                                       | Manufacturer           | Finish        |
| 2                                                     | HINGES              | FBB191(32D)-NRP                                                                   | STANLEY HARDWARE (STH) | 630           |
| 1                                                     | HINGE               | EW8-626                                                                           | DETEX                  | 626           |
| 1                                                     | THRESHOLD           | 896N                                                                              | NATIONAL GUARD (NGP)   | AL            |
| 1                                                     | EXIT/PANIC          | V40092W 628x(R HR01HR)xEAx LDxC7xKxSx (36"or48") - INCLUDES TRANSFORMER PP-5152-3 | DETEX                  | 628           |
| 1                                                     | REMOTE SOUNDER      | CS-29405                                                                          | DETEX                  | GREY          |
| 1                                                     | CLOSER W/ HOLD OPEN | 1601H                                                                             | NORTON DOOR (NDC)      | AL            |
| 1                                                     | DRIP STRIP          | 16A                                                                               | NATIONAL GUARD (NGP)   | CLEAR ANOD AL |
| 1                                                     | STICK-ON GASKET     | 5060B                                                                             | NATIONAL GUARD (NGP)   | CLEAR ANOD AL |
| 1                                                     | DOOR SWEEP          | 9605A                                                                             | NATIONAL GUARD (NGP)   | CLEAR ANOD AL |
| 1                                                     | DOOR VIEWER         | 698                                                                               | IVES (IVS)             | AL            |



| Issued:             | Date:    |
|---------------------|----------|
| A Permit Set        | 12/05/17 |
| B Client Review Set | 05/03/18 |
| C Bid Set           | 05/11/18 |
| D                   |          |

| Revisions: | Date: |
|------------|-------|
| 1          |       |
| 2          |       |
| 4          |       |
| 5          |       |
| 7          |       |
| 8          |       |
| 9          |       |

**DO NOT SCALE PLANS**  
Copying, Printing, Software and other processes required to produce these prints can stretch or shrink the actual paper or layout. Therefore, scaling of this drawing may be inaccurate. Contact our consultants with any need for additional dimensions or clarifications.

**ms consultants, inc.**  
engineers, architects, planners  
920 Main Campus Drive  
Suite 430  
Raleigh, NC 27606-5213  
phone 919.772.5565  
fax 919.779.2308

DRAWN BY: MEM/KNW  
REVIEWED BY: JAB

Seal

**ALDI Inc.**  
1985 Old Union Church Road  
Salisbury, NC 28146  
(704) 642-0023  
(704) 642-0078 fax

ALDI Inc. Store #: 65  
Charlotte, NC  
6113 Idlewild Road  
Charlotte, NC 28212  
Mecklenburg County  
Project Name & Location:

| Door Schedules & Details |                      |
|--------------------------|----------------------|
| Prototype Rls. 09/07/17  | Project No. 40452-13 |
| Type: LHSD-V8            |                      |
| Scale: As Noted          | Drawing No. A-601    |