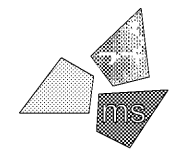


Issued:	Date:
A Permit Set	12/05/17
B Client Review Set	05/03/18
C Bid Set	05/11/18
D	
Revisions:	Date:
1	
2	
3	
4	
5	
6	
7	
8	
9	

DO NOT SCALE PLANS
 Copying, printing, software and other processes required to produce these prints can stretch or shrink the actual paper or layout. Therefore, scaling of this drawing may be inaccurate. Contact ms consultants with any need for additional dimensions or clarifications.



ms consultants, inc.
 engineers, architects, planners
 920 Main Campus Drive
 Suite 430
 Raleigh, NC 27606-5213
 phone 919.772.5565
 fax 919.779.2308

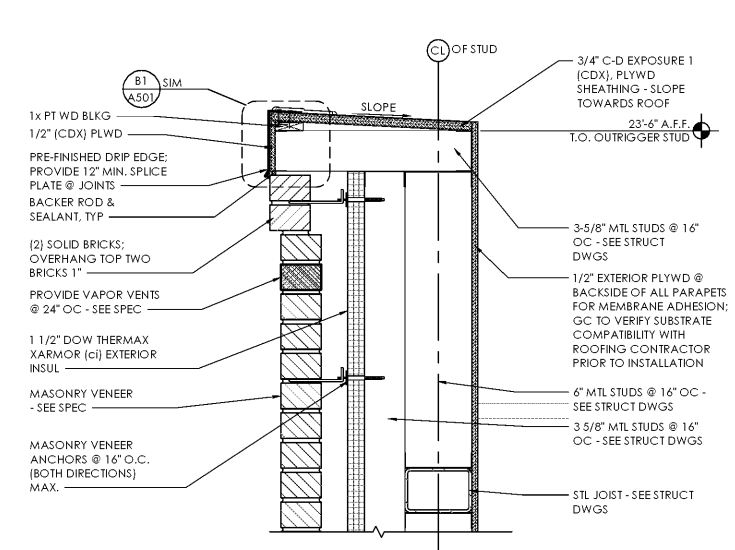
DRAWN BY: MEM/KNW
 REVIEWED BY: JAB

Seal

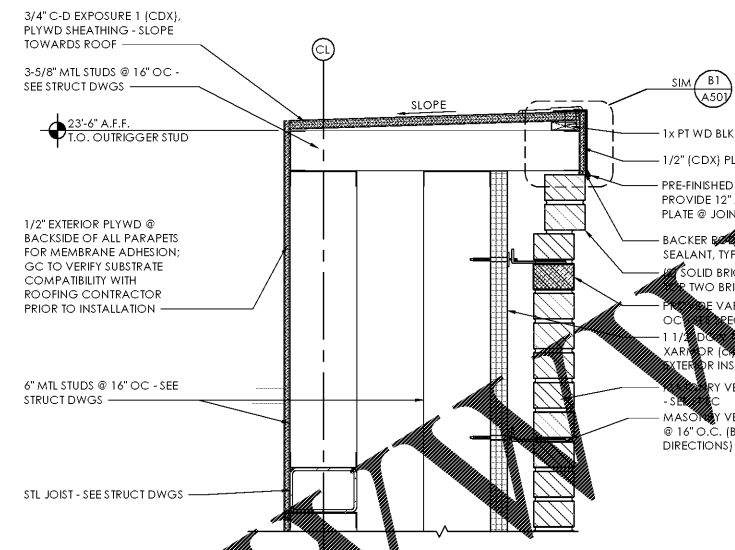


ALDI Inc. Store #: 65
 Charlotte, NC
 6113 Idlewild Road
 Charlotte, NC 28212
 Mecklenburg County
 Project Name & Location:

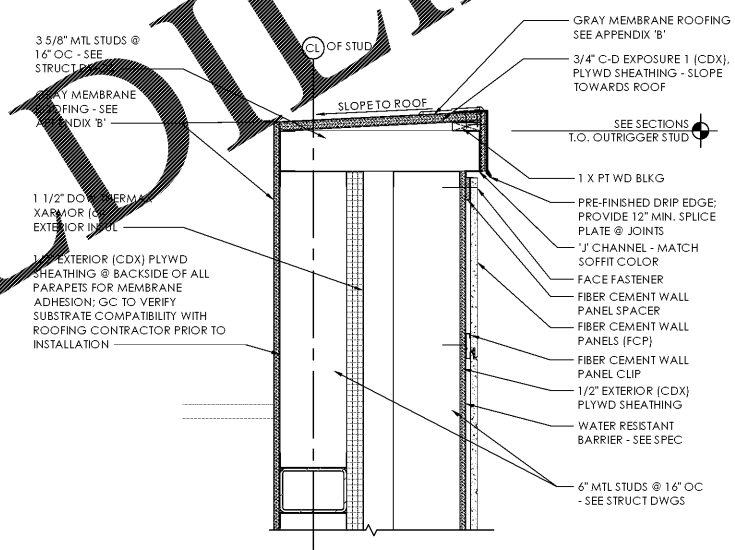
Exterior Details
 Drawing Name:
 Prototype Rls. 09/07/17 Project No. 40452-13
 Type: LHSD-V8
 A-506
 Scale: As Noted Drawing No.



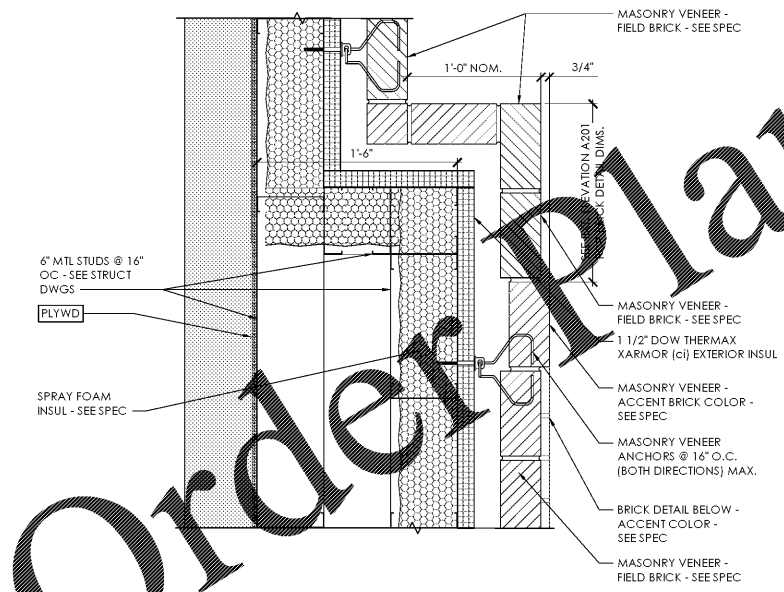
D2 Exterior Section Detail - 4" Brick Projection Wall Element
 SCALE: 3" = 1'-0"



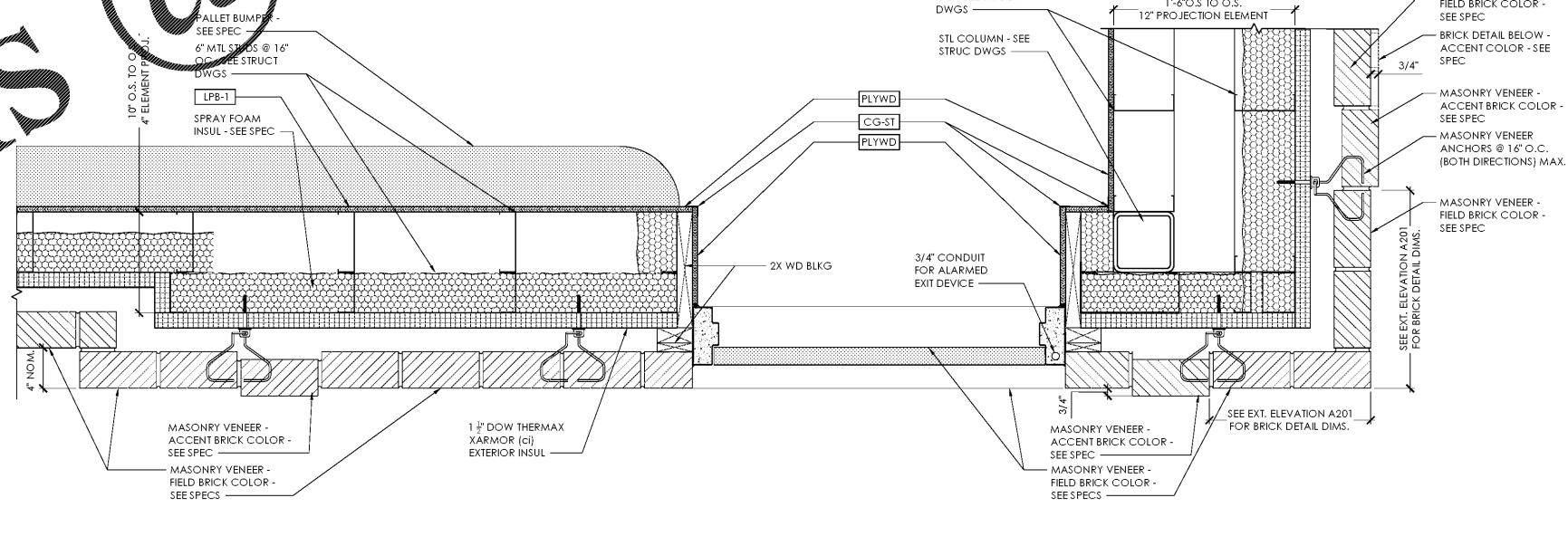
C2 Exterior Section Detail - 12" Brick Projection Wall Element
 SCALE: 3" = 1'-0"



A2 Exterior Section Detail - 4" Fiber Cement Wall Element
 SCALE: 3" = 1'-0"



D1 Exterior Plan Detail - 12" Brick Projection Wall Element
 SCALE: 3" = 1'-0"



C1 Exterior Plan Detail - Corner Brick 4" & 12" Projection @ Dock Door
 SCALE: 1 1/2" = 1'-0"

PLOTTED: 5/8/2018 3:55 PM