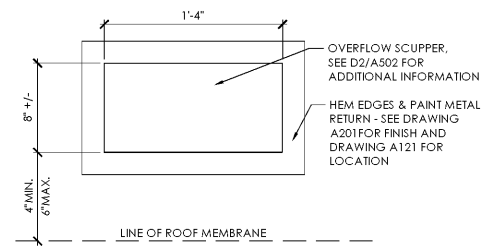


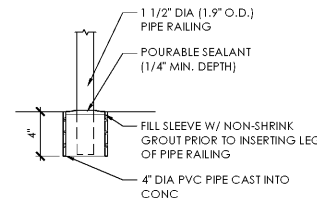
Exterior Section Detail - Roof Hatch

D3 SCALE: 1 1/2" = 1'-0"



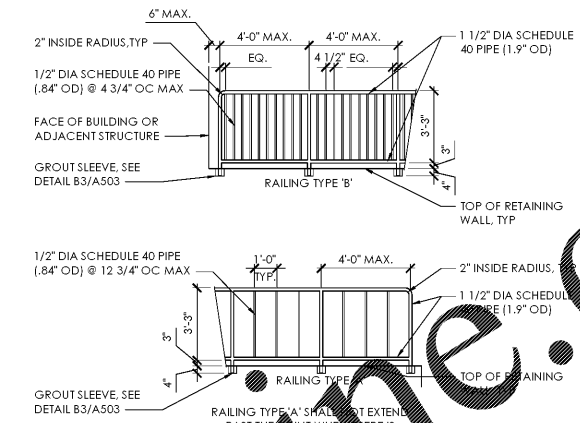
Exterior Detail - Roof Scupper

C3 SCALE: 1 1/2" = 1'-0"



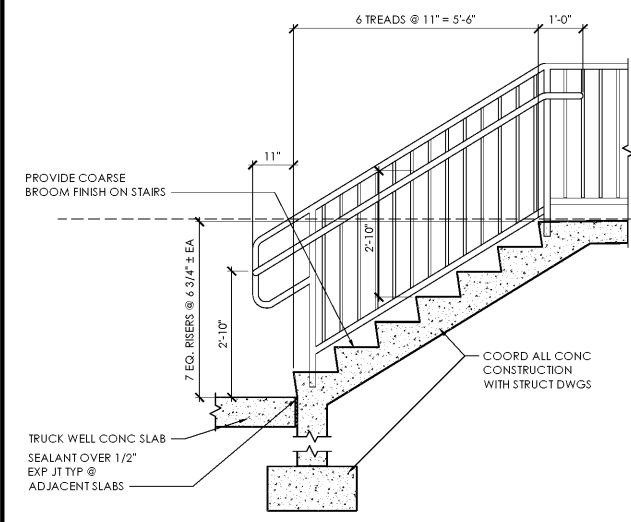
Exterior Detail - Railing Post Base

B3 SCALE: 1 1/2" = 1'-0"



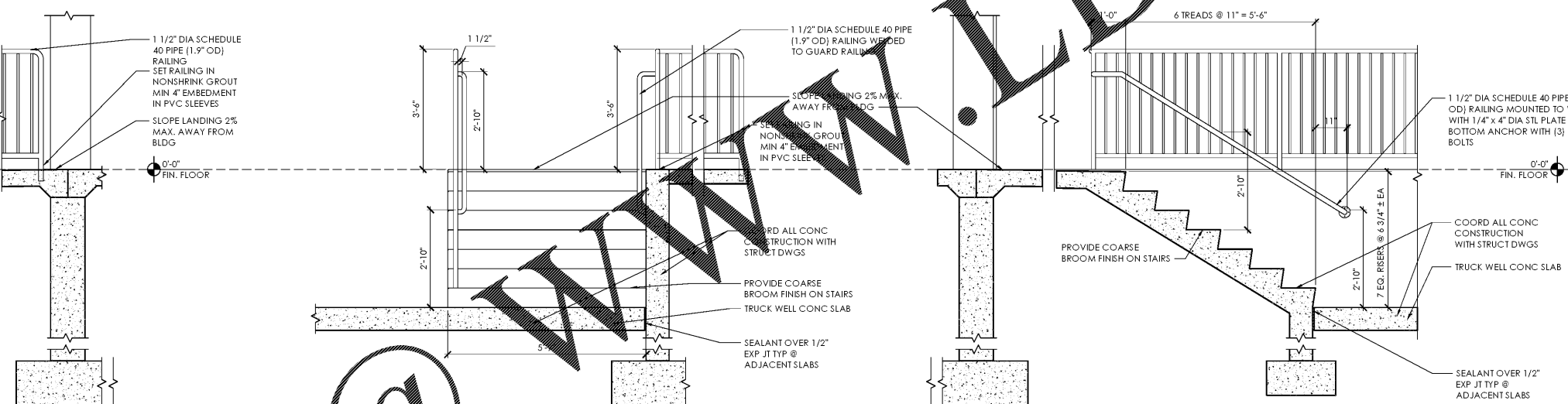
Exterior Detail - Railing Types

B3 SCALE: 1 1/4" = 1'-0"



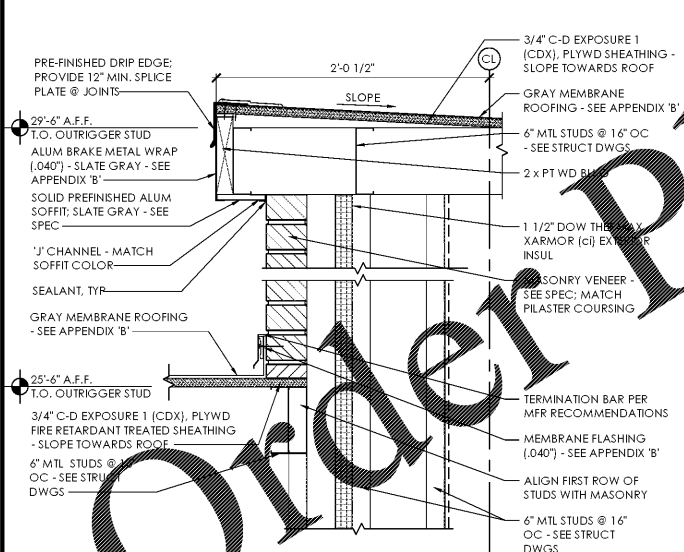
Exterior Section Detail - Loading Dock Stair

D2 SCALE: 1/2" = 1'-0"



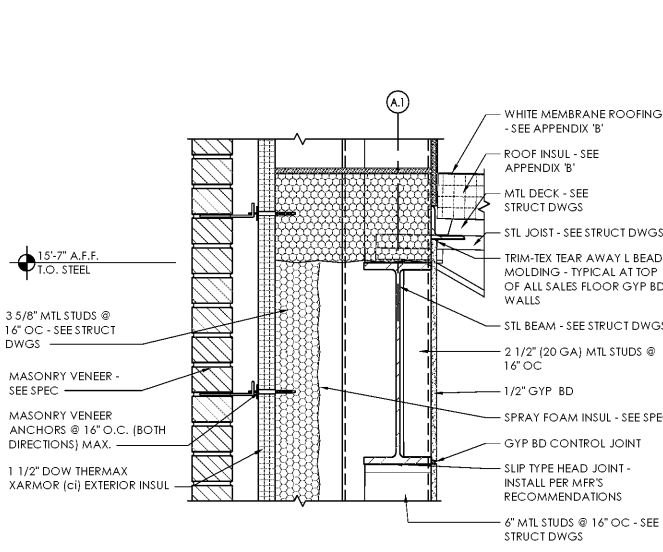
Exterior Section Detail - Primary Tower Side at Entry Pilaster

C1 SCALE: 1 1/2" = 1'-0"



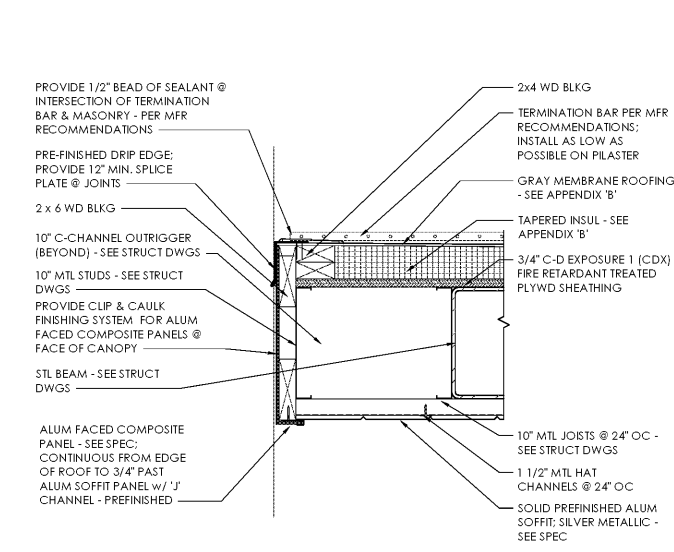
Exterior Section Detail - Tower Connection

D1 SCALE: 1 1/2" = 1'-0"



Exterior Section Detail - Wall Assembly at Entry Pilaster

B1 SCALE: 1 1/2" = 1'-0"



Exterior Section Detail - Canopy Return to Entry Pilaster

A1 SCALE: 1 1/2" = 1'-0"

Issued:	Date:
A Permit Set	12/05/17
B Client Review Set	05/03/18
C Bid Set	05/11/18
D	
Revisions:	Date:
1	
2	
3	
4	
5	
6	
7	
8	
9	

DO NOT SCALE PLANS
Copying, printing, software and other processes required to produce these prints can stretch or shrink the actual paper or layout. Therefore, scaling of this drawing may be inaccurate. Contact us consultants with any need for additional dimensions or clarifications.

ms consultants, inc.
engineers, architects, planners
920 Main Campus Drive
Suite 430
Raleigh, NC 27606-5213
phone 919.772.5565
fax 919.779.2308

DRAWN BY: MEM/KNW
REVIEWED BY: JAB

Seal

ALDI Inc.
1985 Old Union Church Road
Salisbury, NC 28146
(704) 642-0023
(704) 642-0078 fax

ALDI Inc. Store #: 65
Charlotte, NC
6113 Idlewild Road
Charlotte, NC 28212
Mecklenburg County
Project Name & Location:

Exterior Details
Drawing Name:
Prototype Rls. 09/07/17 Project No. 40452-13
Type: LHSD-V8
A-503
Scale: As Noted Drawing No.