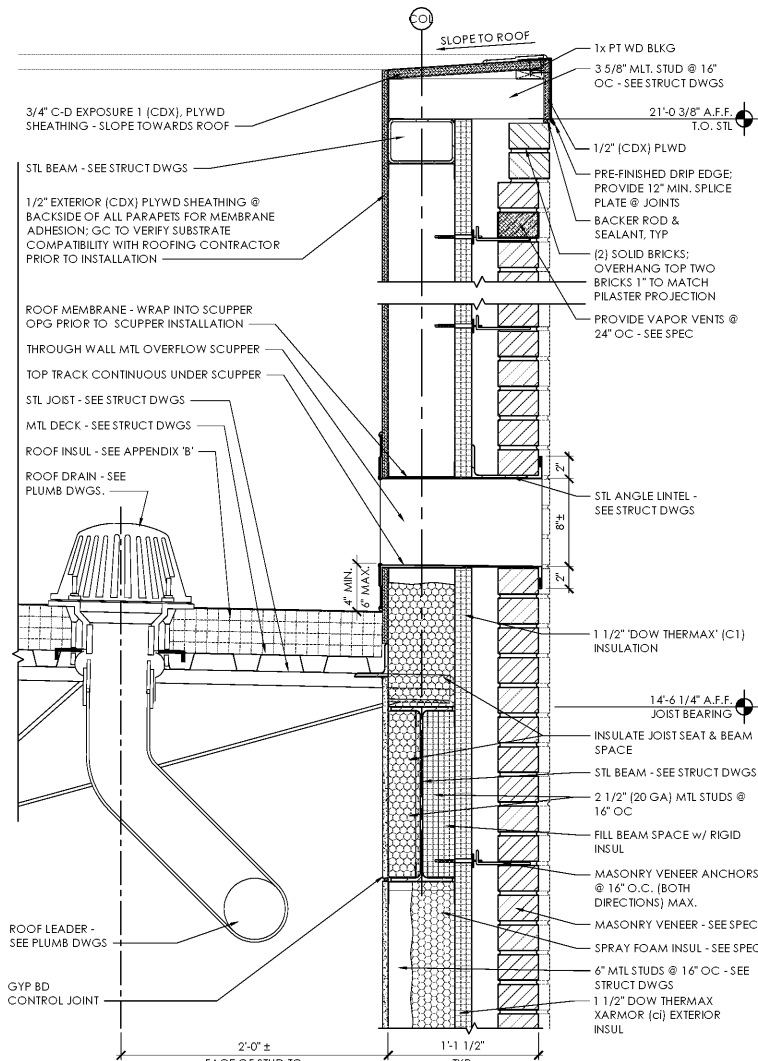


NOTE:  
PROVIDE WALL OPENING FLASHING AT ALL OPENING - REFER TO SPECIFICATIONS FOR FURTHER INFORMATION.

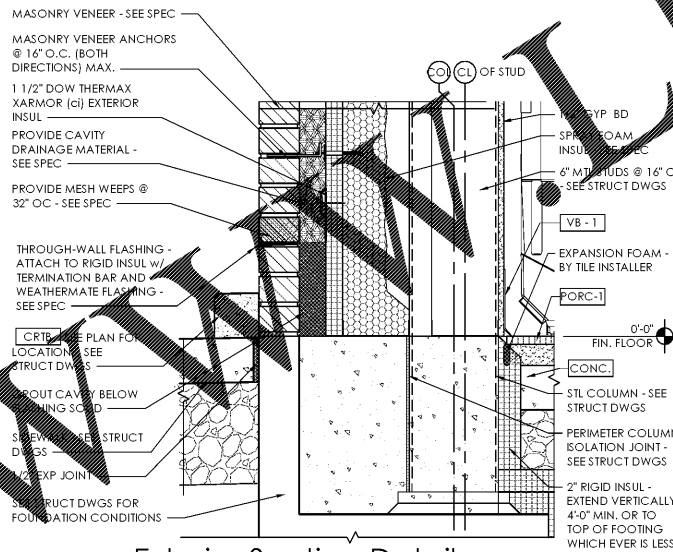
CONCRETE NOTE:  
CONCRETE SLABS SHALL MEET OR EXCEED ALL REQUIREMENTS AS SET FORTH IN NCSBC SECTION 1910.1 MINIMUM SLAB PROVISIONS:

-CONCRETE FLOOR SLABS SUPPORTED DIRECTLY ON GROUND WILL BE 5" NUB.  
-6 MIL POLYETHYLENE VAPOR RETARDER WITH JOINTS LAPPED NOT LESS THAN 6" PLACED BETWEEN THE BASE COURSE AND THE CONCRETE FLOOR SLAB



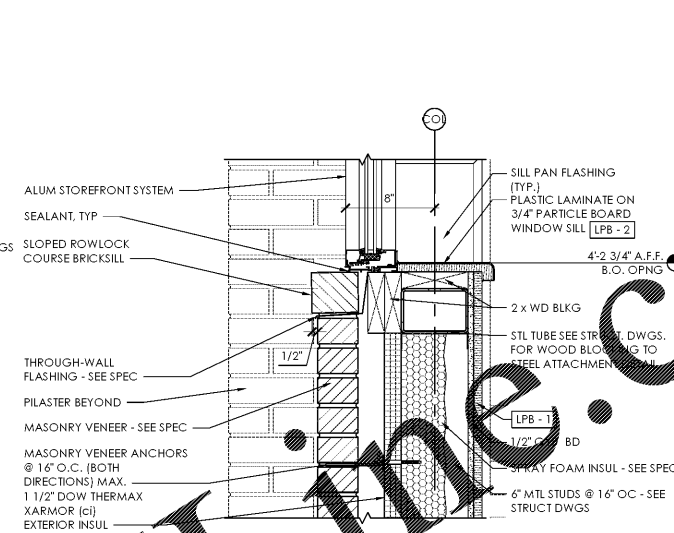
Exterior Section Detail - Canopy at End Pilaster

SCALE: 1 1/2\"/>



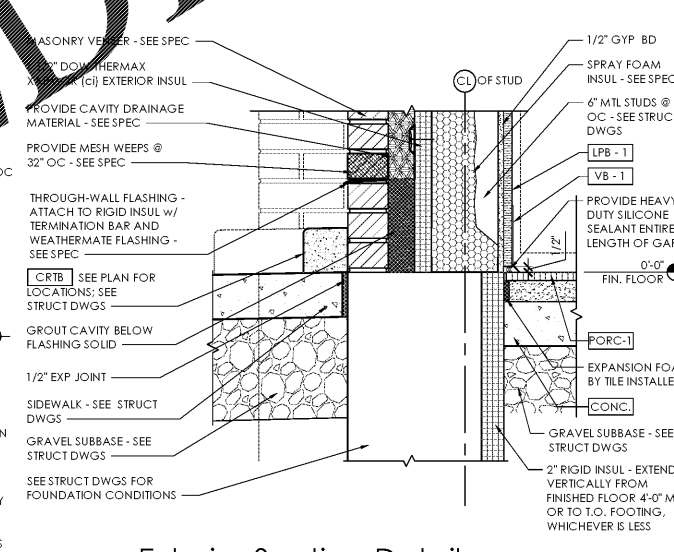
Exterior Section Detail - Column Base at End Pilaster

SCALE: 1 1/2\"/>



Exterior Section Detail - Full Height Window Opening

SCALE: 1 1/2\"/>

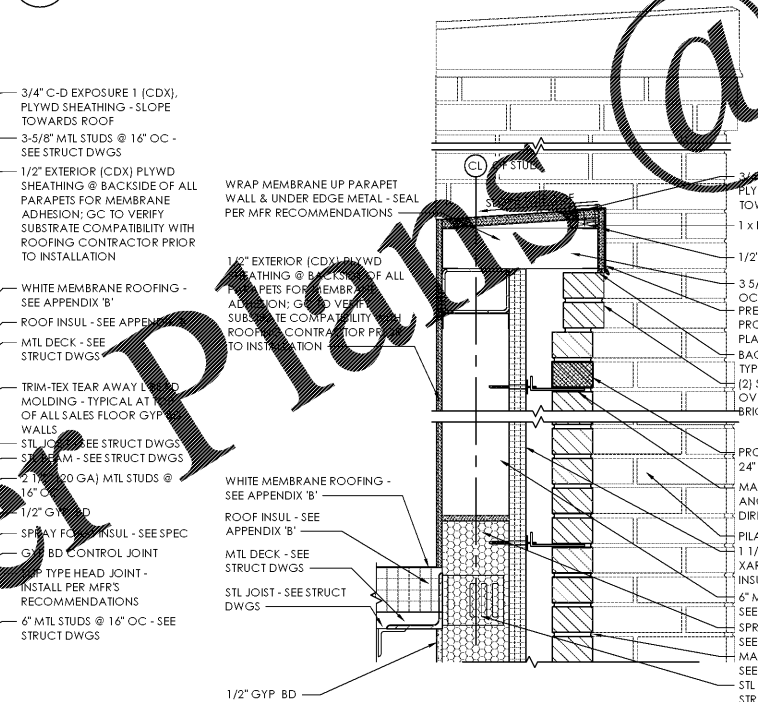


Exterior Section Detail - Typ. Wall Base at Sidewalk

SCALE: 1 1/2\"/>

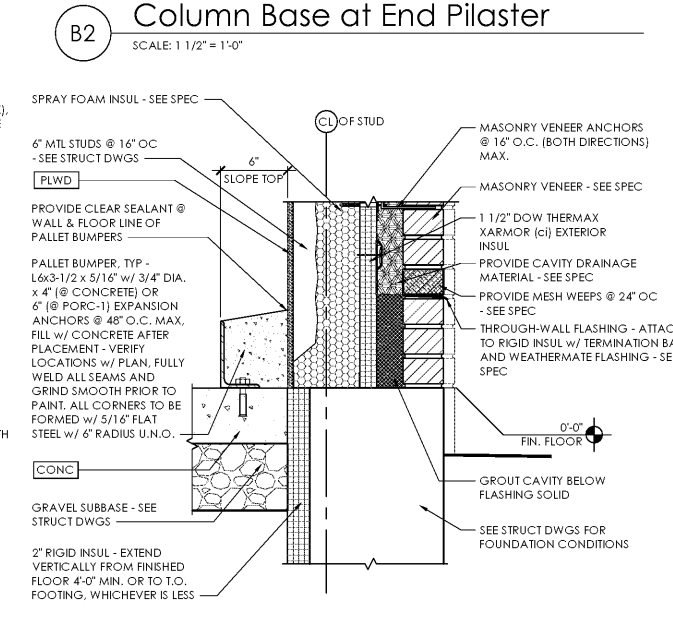
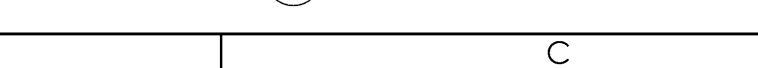
Exterior Section Detail - Parapet at Scupper (D2)

SCALE: 1 1/2\"/>



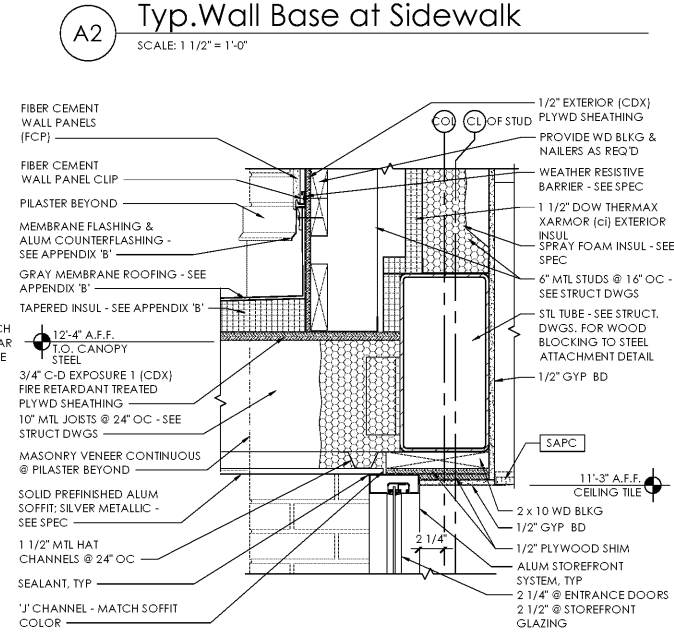
Exterior Section Detail - Parapet at Field (C1)

SCALE: 1 1/2\"/>



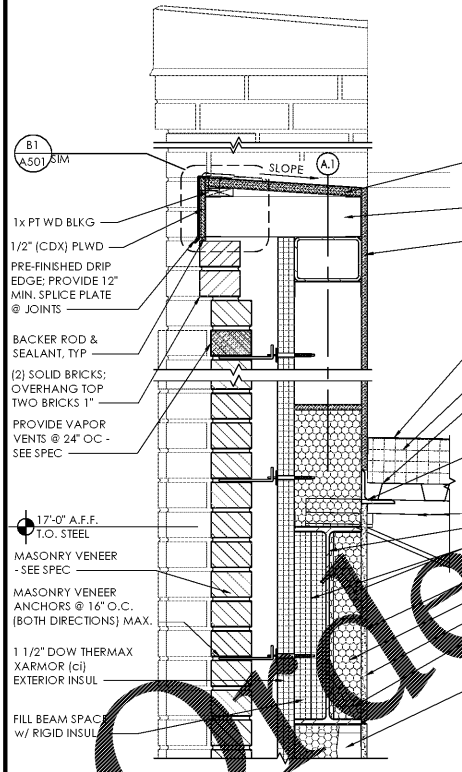
Exterior Section Detail - Typ. Wall Base at Grade (B1)

SCALE: 1 1/2\"/>



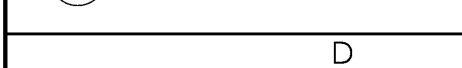
Exterior Section Detail (High Tower) - Canopy Connection at Storefront (A1)

SCALE: 1 1/2\"/>



Exterior Section Detail - Parapet at Field (D1)

SCALE: 1 1/2\"/>



Issued:	Date:
A Permit Set	12/05/17
B Client Review Set	05/03/18
C Bid Set	05/11/18

Revisions:	Date:
1	
2	
3	
4	
5	
6	
7	
8	
9	

DO NOT SCALE PLANS  
Copying, Printing, Software and other processes required to produce these prints can stretch or shrink the actual paper or layout. Therefore, scaling of this drawing may be inaccurate. Contact us consultants with any need for additional dimensions or clarifications.

**ms consultants, inc.**  
engineers, architects, planners  
920 Main Campus Drive  
Suite 430  
Raleigh, NC 27606-5213  
phone 919.772.5565  
fax 919.779.2308

DRAWN BY: MEM/KNW  
REVIEWED BY: JAB

Seal

**ALDI Inc.**  
1985 Old Union Church Road  
Salisbury, NC 28146  
(704) 642-0023  
(704) 642-0078 fax

ALDI Inc. Store #: 65  
Charlotte, NC  
6113 Idlewild Road  
Charlotte, NC 28212  
Mecklenburg County  
Project Name & Location:

Exterior  
Details - Section  
Drawing Name:  
Prototype Rls. 09/07/17 Project No. 40452-13  
Type: LHSD-V8  
A-502  
Scale: As Noted Drawing No.

PLOTTED: 5/8/2018 4:37 PM