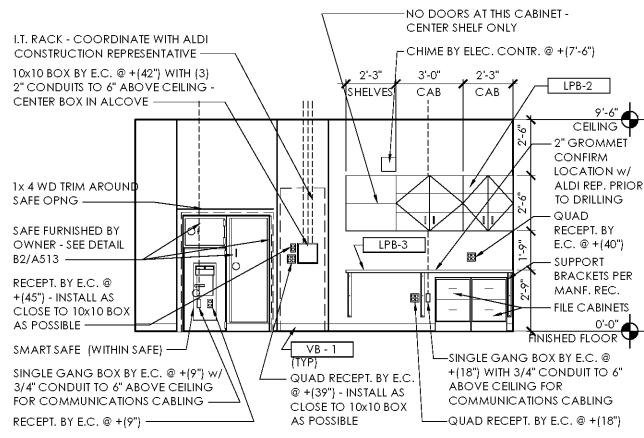
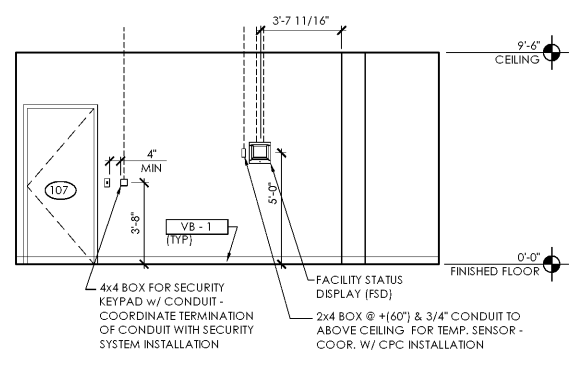


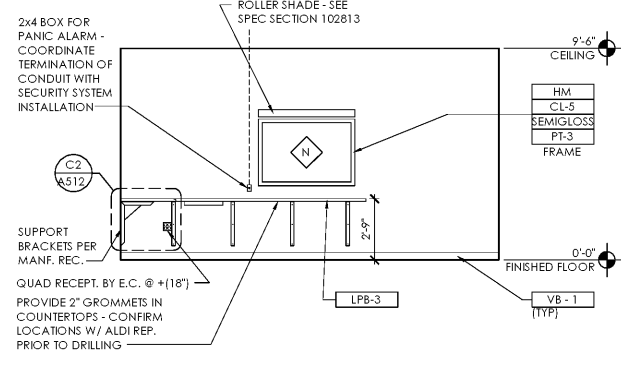
NOTE:
REFER TO DRAWING A-603
FOR ALL FINISH CALL-OUTS



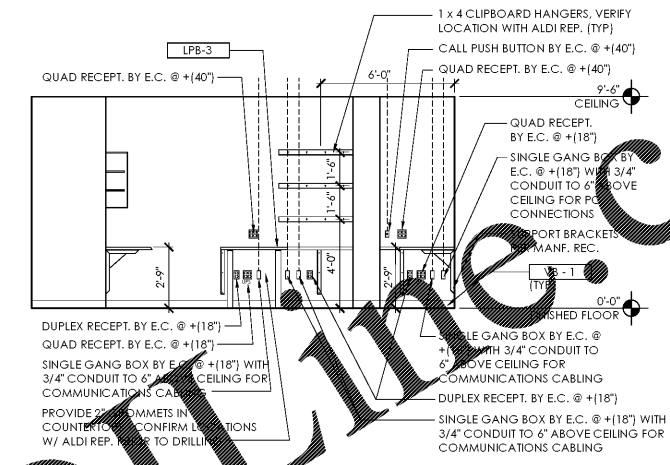
D3 Office #107
SCALE: 1/4" = 1'-0"



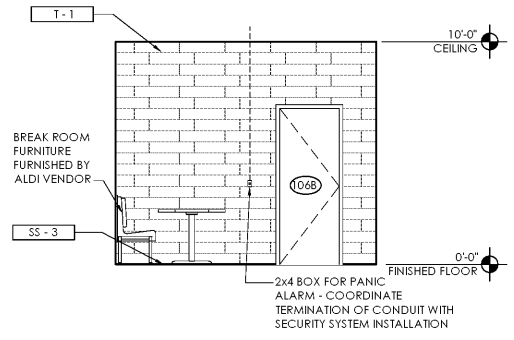
C3 Office #107
SCALE: 1/4" = 1'-0"



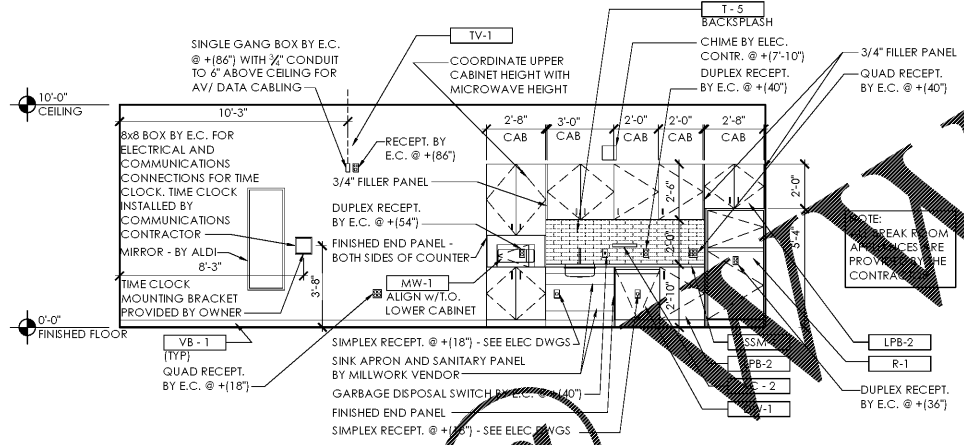
B3 Office #107
SCALE: 1/4" = 1'-0"



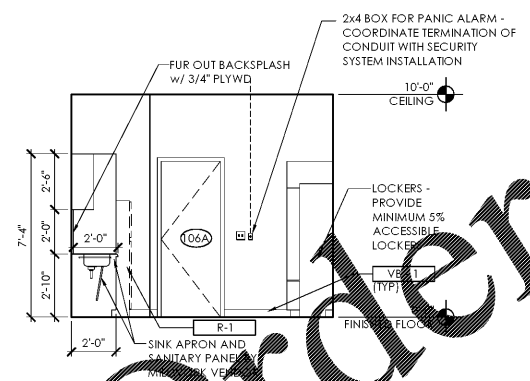
A3 Office #107
SCALE: 1/4" = 1'-0"



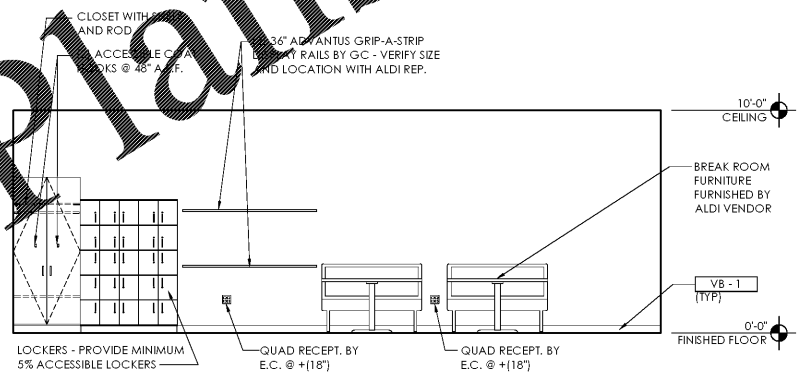
D2 Break Room #106
SCALE: 1/4" = 1'-0"



C2 Break Room #106
SCALE: 1/4" = 1'-0"



D1 Break Room #106
SCALE: 1/4" = 1'-0"

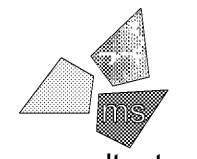


C1 Break Room #106
SCALE: 1/4" = 1'-0"

Issued:	Date:
A Permit Set	12/05/17
B Client Review Set	05/03/18
C Bid Set	05/11/18
D	

Revisions:	Date:
1	
2	
3	
4	
5	
6	
7	
8	
9	

DO NOT SCALE PLANS
Copying, Printing, Software and other processes required to produce these prints can stretch or shrink the actual paper or layout. Therefore, scaling of this drawing may be inaccurate. Contact ms consultants with any need for additional dimensions or clarifications.



ms consultants, inc.
engineers, architects, planners
920 Main Campus Drive
Suite 430
Raleigh, NC 27606-5213
phone 919.772.5565
fax 919.779.2308

DRAWN BY: MEM/KNW
REVIEWED BY: JAB

Seal



ALDI Inc. Store #: 65
Charlotte, NC
6113 Idlewild Road
Charlotte, NC 28212
Mecklenburg County
Project Name & Location:

Interior Elevations
Drawing Name:
Prototype Rls. 09/07/17 Project No. 40452-13
Type: LHSD-V8
A-216
Scale: As Noted Drawing No.