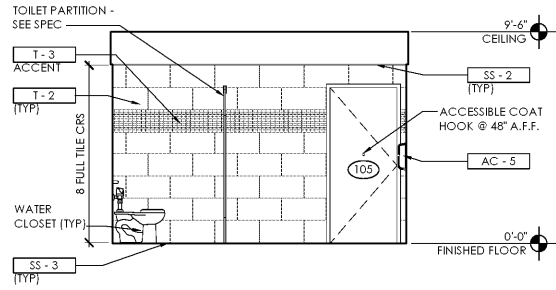
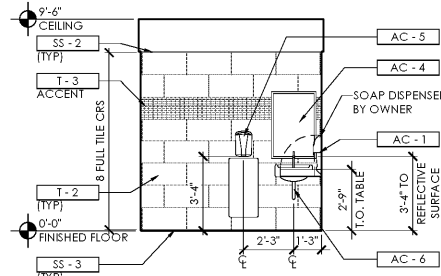


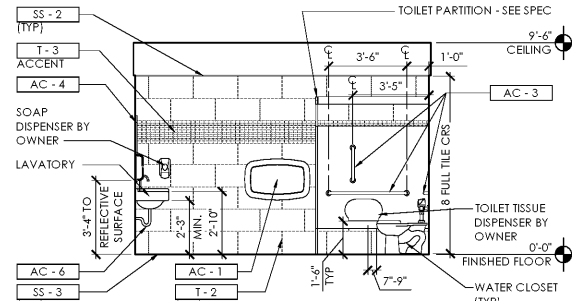
NOTE:
REFER TO DRAWING A-603
FOR ALL FINISH CALL-OUTS



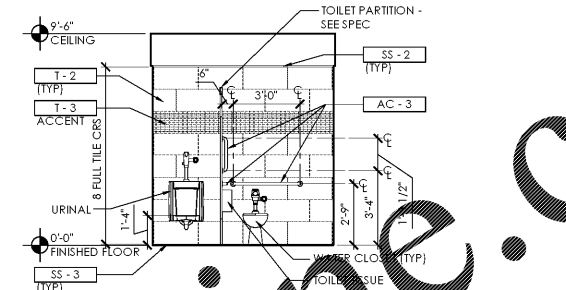
D3 Men's Lav. #105
SCALE: 1/4" = 1'-0"



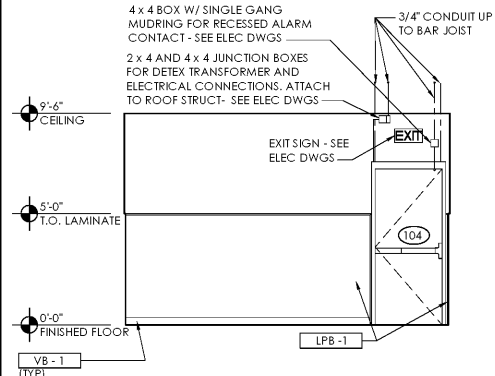
C3 Men's Lav. #105
SCALE: 1/4" = 1'-0"



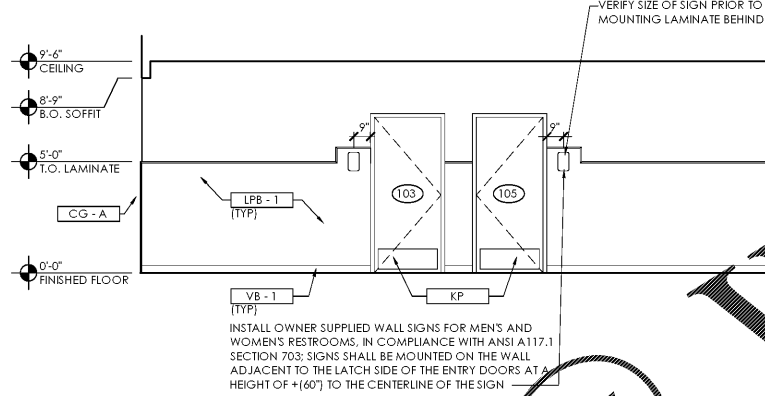
B3 Men's Lav. #105
SCALE: 1/4" = 1'-0"



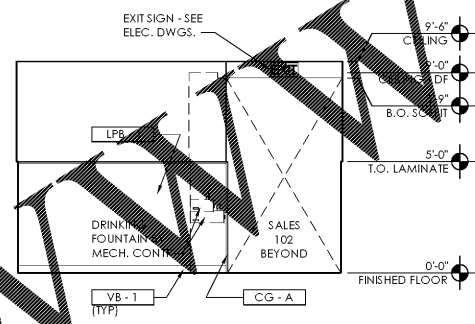
A3 Men's Lav. #105
SCALE: 1/4" = 1'-0"



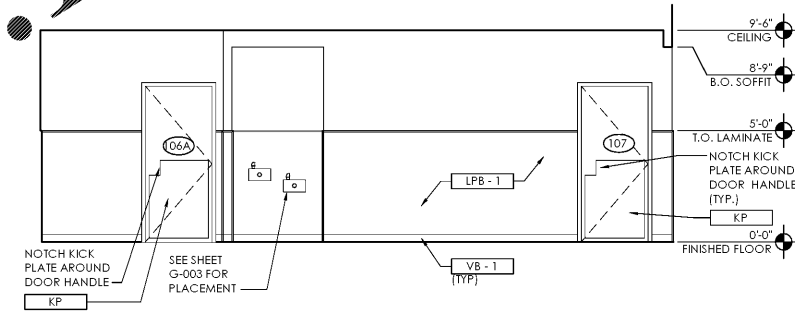
D2 Hallway #104
SCALE: 1/4" = 1'-0"



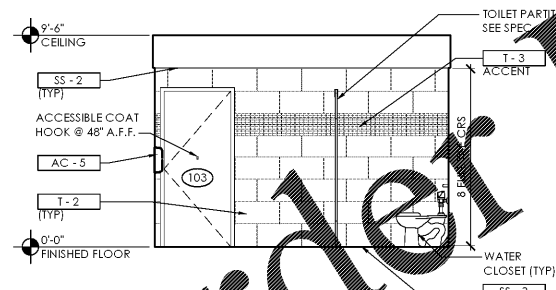
C2 Hallway #104
SCALE: 1/4" = 1'-0"



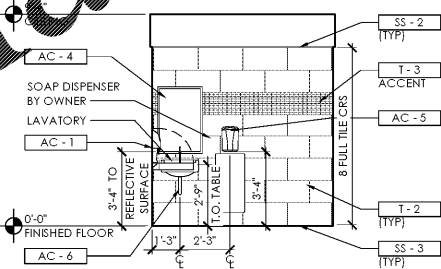
B2 Hallway #104
SCALE: 1/4" = 1'-0"



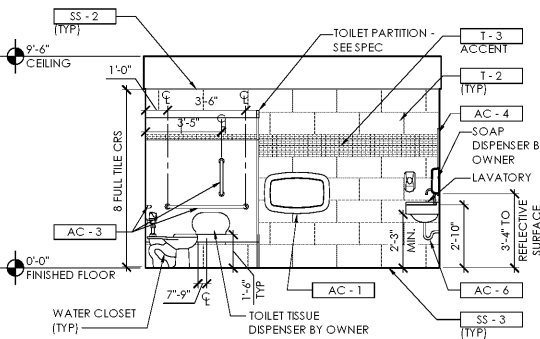
A2 Hallway #104
SCALE: 1/4" = 1'-0"



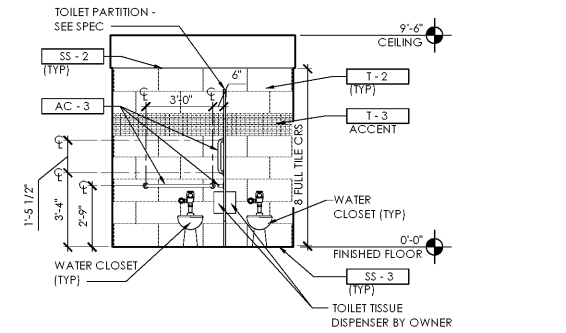
D1 Women's Lav. #103
SCALE: 1/4" = 1'-0"



C1 Women's Lav. #103
SCALE: 1/4" = 1'-0"



B1 Women's Lav. #103
SCALE: 1/4" = 1'-0"



A1 Women's Lav. #103
SCALE: 1/4" = 1'-0"

Issued:	Date:
A Permit Set	12/05/17
B Client Review Set	05/03/18
C Bid Set	05/11/18
D	

Revisions: _____ Date: _____
1 _____
2 _____
3 _____
4 _____
5 _____
6 _____
7 _____
8 _____
9 _____

ms consultants, inc.
engineers, architects, planners
920 Main Campus Drive
Suite 430
Raleigh, NC 27606-5213
phone 919.772.5565
fax 919.779.2308

DRAWN BY: MEM/KNW
REVIEWED BY: JAB

Seal

ALDI Inc.
1985 Old Union Church Road
Salisbury, NC 28146
(704) 642-0023
(704) 642-0078 fax

ALDI Inc. Store #: 65
Charlotte, NC
6113 Idlewild Road
Charlotte, NC 28212
Mecklenburg County
Project Name & Location:

Interior Elevations Drawing Name:	Prototype Rls. 09/07/17	Project No. 40452-13
	Type: LHSD-V8	
		A-215
Scale: As Noted		Drawing No.

PLOTTED: 5/8/2018 3:48 PM

Order Plans @ WWW.LDOnline.com

D C B A