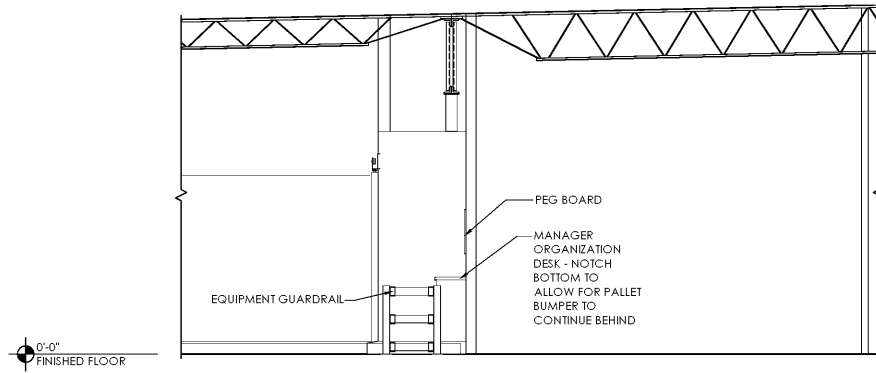
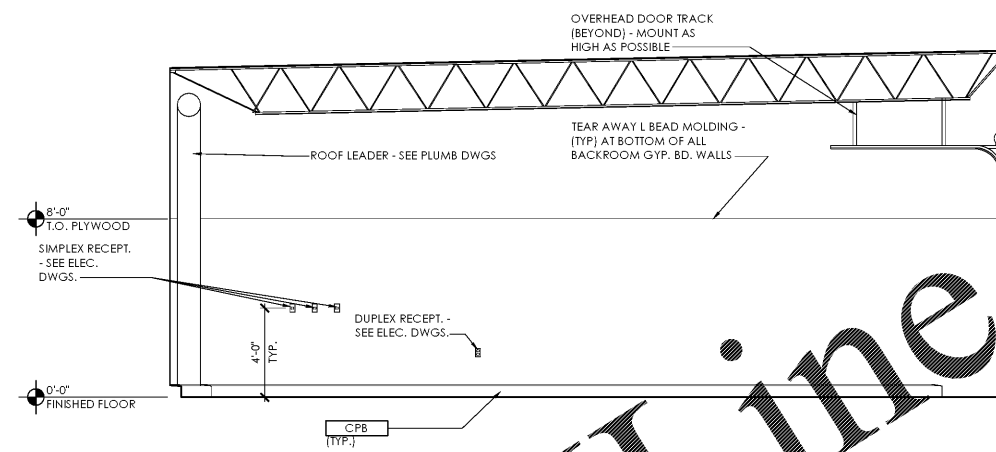


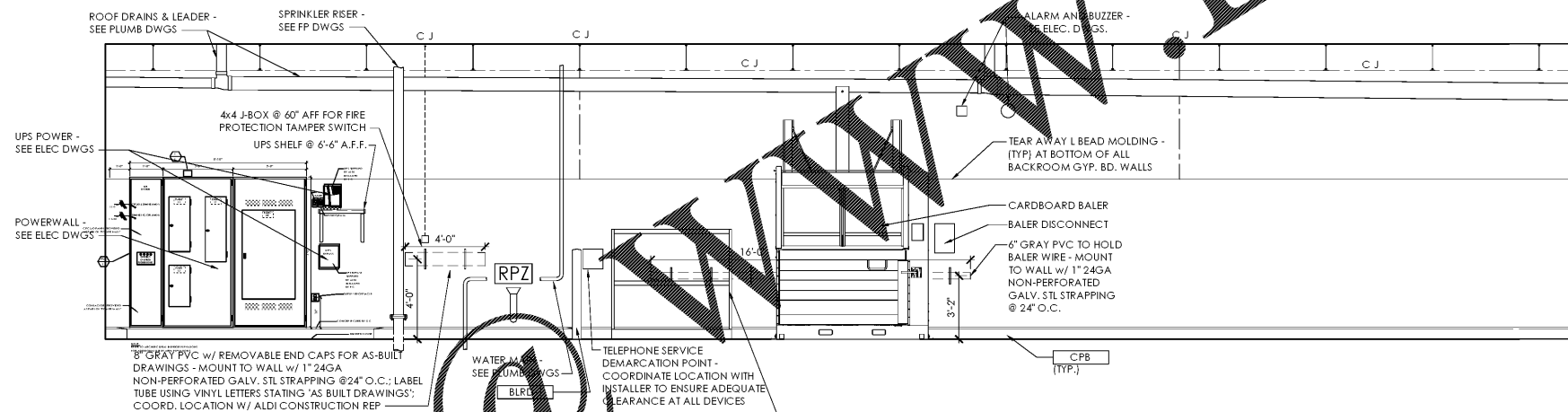
NOTE:
 1. REFER TO DRAWING A-603 FOR ALL FINISH CALL-OUTS
 2. VERIFY THE LOCATION OF ELECTRICAL OUTLETS WITH ELECTRICAL PLANS BEFORE INSTALLATION. IF THERE IS A CONFLICT, NOTIFY OWNER PRIOR TO ANY WORK.



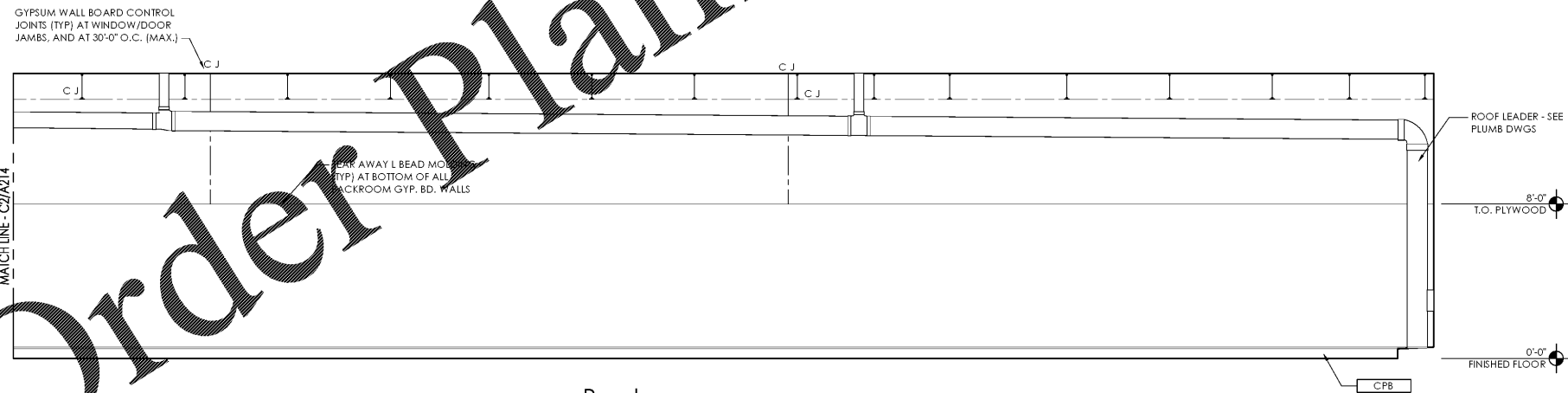
C3 Backroom Interior Elevation
 SCALE: 1/4" = 1'-0"



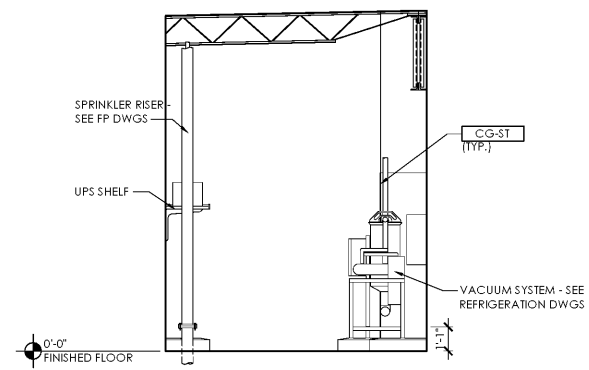
A2 Backroom Interior Elevation
 SCALE: 1/4" = 1'-0"



C2 Backroom Interior Elevation
 SCALE: 1/4" = 1'-0"



C1 Backroom Interior Elevation
 SCALE: 1/4" = 1'-0"

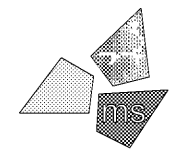


A1 Backroom Interior Elevation
 SCALE: 1/4" = 1'-0"

Issued:	Date:
A Permit Set	12/05/17
B Client Review Set	05/03/18
C Bid Set	05/11/18
D	

Revisions:	Date:
1	
2	
3	
4	
5	
6	
7	
8	
9	

DO NOT SCALE PLANS
 Copying, Printing, Software and other processes required to produce these prints can stretch or shrink the actual paper or layout. Therefore, scaling of this drawing may be inaccurate. Contact ms consultants with any need for additional dimensions or clarifications.



ms consultants, inc.
 engineers, architects, planners
 920 Main Campus Drive
 Suite 430
 Raleigh, NC 27606-5213
 phone 919.772.5565
 fax 919.779.2308

DRAWN BY: MEM/KNW
 REVIEWED BY: JAB

Seal



ALDI Inc. Store #: 65
 Charlotte, NC
 6113 Idlewild Road
 Charlotte, NC 28212
 Mecklenburg County
 Project Name & Location:

Interior Elevations Drawing Name:	
Prototype Rls. 09/07/17	Project No. 40452-13
Type: LHSD-V8	
	A-214
Scale: As Noted	Drawing No.

PLOTTED: 5/10/2018 1:32 PM

Order Plans

www.LDLine.com