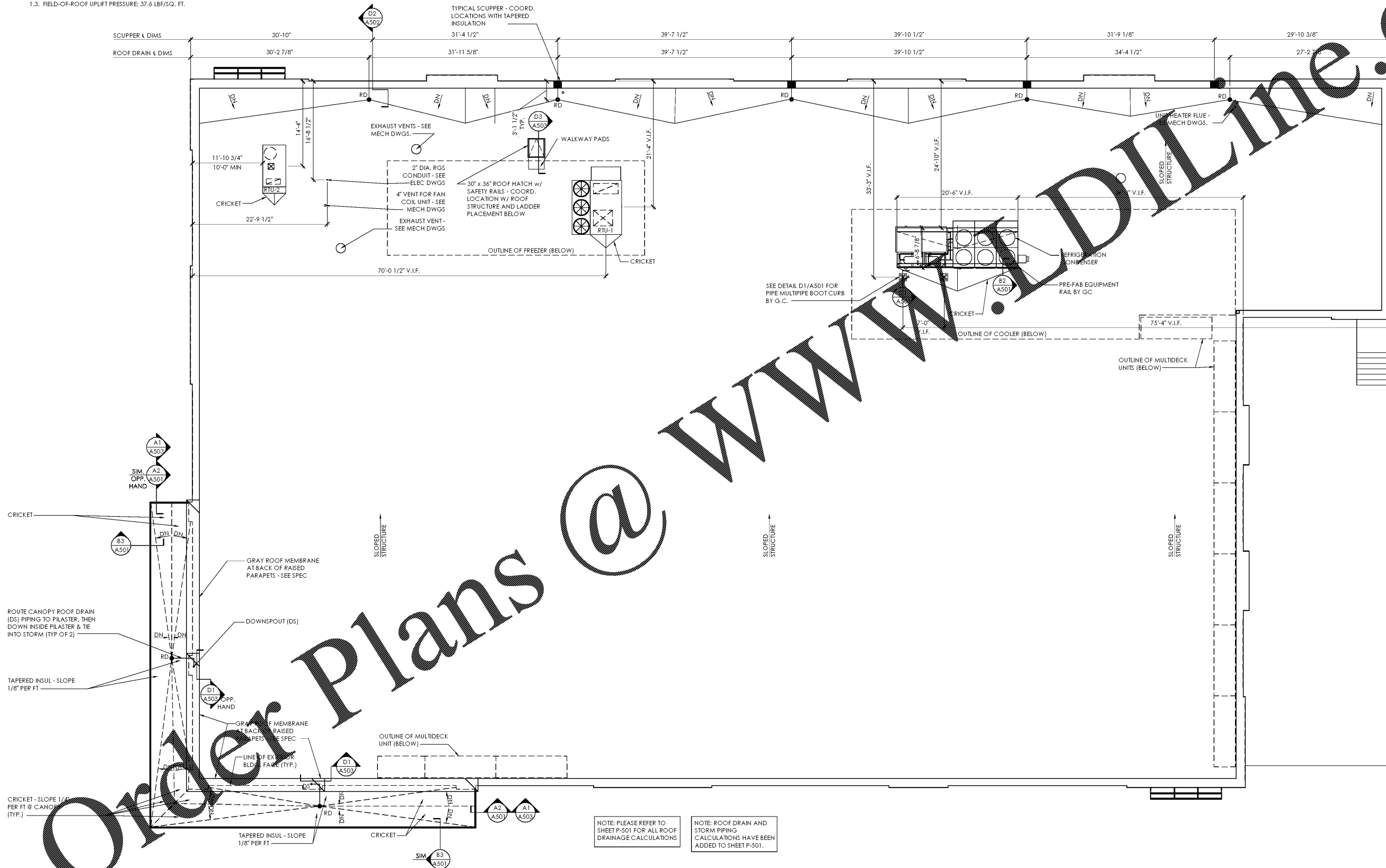


- NOTE:
- ROOFTOP EQUIPMENT, SCUPPER AND ROOF DRAIN LOCATION DIMENSIONS REFER TO EXTERIOR FACE OF MASONRY @ FINISHED FLOOR.
 - G.C. SHALL SUPPLY ALL NECESSARY BLOCKING, NAILERS, MISC. LUMBER, AND FASTENERS FOR ROOF TOP INSTALLATIONS TO ENSURE ITEMS ARE PLUMB, LEVEL AND SECURED AS RECOMMENDED BY ITEMS MANUFACTURER.
 - ROOF SYSTEM PERFORMANCE REQUIREMENTS
 - ACCELERATED WEATHERING: ROOFING SYSTEM SHALL WITHSTAND 2000 HOURS OF EXPOSURE WHEN TESTED ACCORDING TO ASTM G 152, ASTM G 154, OR ASTM G 155.
 - IMPACT RESISTANCE: ROOFING SYSTEM SHALL RESIST IMPACT DAMAGE WHEN TESTED ACCORDING TO ASTM D 3746 OR ASTM D 4272.
 - ROOFING SYSTEM DESIGN: TESTED BY A QUALIFIED TESTING AGENCY TO RESIST THE FOLLOWING UPLIFT PRESSURES:
 - CORNER UPLIFT PRESSURE: 72.2T LBF/SQ. FT.
 - PERIMETER UPLIFT PRESSURE: 47 LB/SQ. FT.
 - FIELD-OF-ROOF UPLIFT PRESSURE: 37.6 LBF/SQ. FT.



@

Order Plans

NOTE: PLEASE REFER TO SHEET P-501 FOR ALL ROOF DRAINAGE CALCULATIONS

NOTE: ROOF DRAIN AND STORM PIPING CALCULATIONS HAVE BEEN ADDED TO SHEET P-501.

1 Roof Plan
SCALE: 1/8" = 1'-0"



Issued:		Date:
A	Permit Set	12/05/17
B	Client Review Set	05/03/18
C	Bid Set	05/11/18
D		
Revisions:		Date:
1		
2		
4		
5		
7		
8		
9		

DO NOT SCALE PLANS

Copying, printing, software and other processes required to produce these prints can stretch or shrink the actual paper or layout. Therefore, scaling of this drawing may be inaccurate. Contact us consultants with any need for additional dimensions or clarifications.

ms consultants, inc.
engineers, architects, planners
920 Main Campus Drive
Suite 430
Raleigh, NC 27606-5213
phone 919.772.5565
fax 919.779.2308

DRAWN BY: MEM/KNW
REVIEWED BY: JAB

Seal

ALDI Inc.
1985 Old Union Church Road
Salisbury, NC 28146
(704) 642-0023
(704) 642-0078 fax

ALDI Inc. Store #: 65
Charlotte, NC
6113 Idlewild Road
Charlotte, NC 28212
Mecklenburg County
Project Name & Location:

Roof Plan	
Drawing Name:	Prototype Rls. 09/07/17
Type: LHSD-V8	Project No. 40452-13
Scale: As Noted	A-121
	Drawing No.

PLOTTED: 5/11/2018 4:01 PM