

FLOOR FINISH SCHEDULE

(01)	2 5/8" THICK SET TILE SYSTEM - FURNISHED AND INSTALLED BY OWNER
(02)	3/4" THIN SET TILE - FURNISHED BY OWNER; INSTALLED BY GC
(03)	CONCRETE SLAB - SMOOTH FINISH
(04)	CONCRETE SLAB (FREEZER) - MEDIUM BROOM FINISH
(05)	CONCRETE SLAB (COOLER) - SMOOTH FINISH

- NOTES:
- REFER TO DRAWING A-603 FOR COLOR/ FINISH/ MATERIAL SCHEDULES.
 - ALL PARTITION DIMENSIONS ARE TO FACE OF STUD UNLESS NOTED OTHERWISE (IE. CLEAR).
 - PROVIDE BLOCKING AS NEEDED FOR ALL WALL MOUNTED ITEMS
 - FLAT STEEL IS REQ'D AT MERCH. FIXTURES COORD LOCATIONS W/ ALDI REF.
 - REFER TO DRAWING A-603 FOR INTERIOR METAL STUD INFORMATION

(X) INDICATES COLUMN DESIGNATION

Issued:	Date:
A Permit Set	12/05/17
B Client Review Set	05/03/18
C Bid Set	05/11/18
D	

Revisions:	Date:
1	
5	
6	
7	
8	
9	

DO NOT SCALE PLANS
 Copying, Printing, Software and other processes required to produce these prints can stretch or shrink the actual paper or layout. Therefore, scaling of this drawing may be inaccurate. Contact ms consultants with any need for additional dimensions or clarifications.

ms consultants, inc.
 engineers, architects, planners
 920 Main Campus Drive
 Suite 430
 Raleigh, NC 27606-5213
 phone 919.772.5565
 fax 919.779.2308

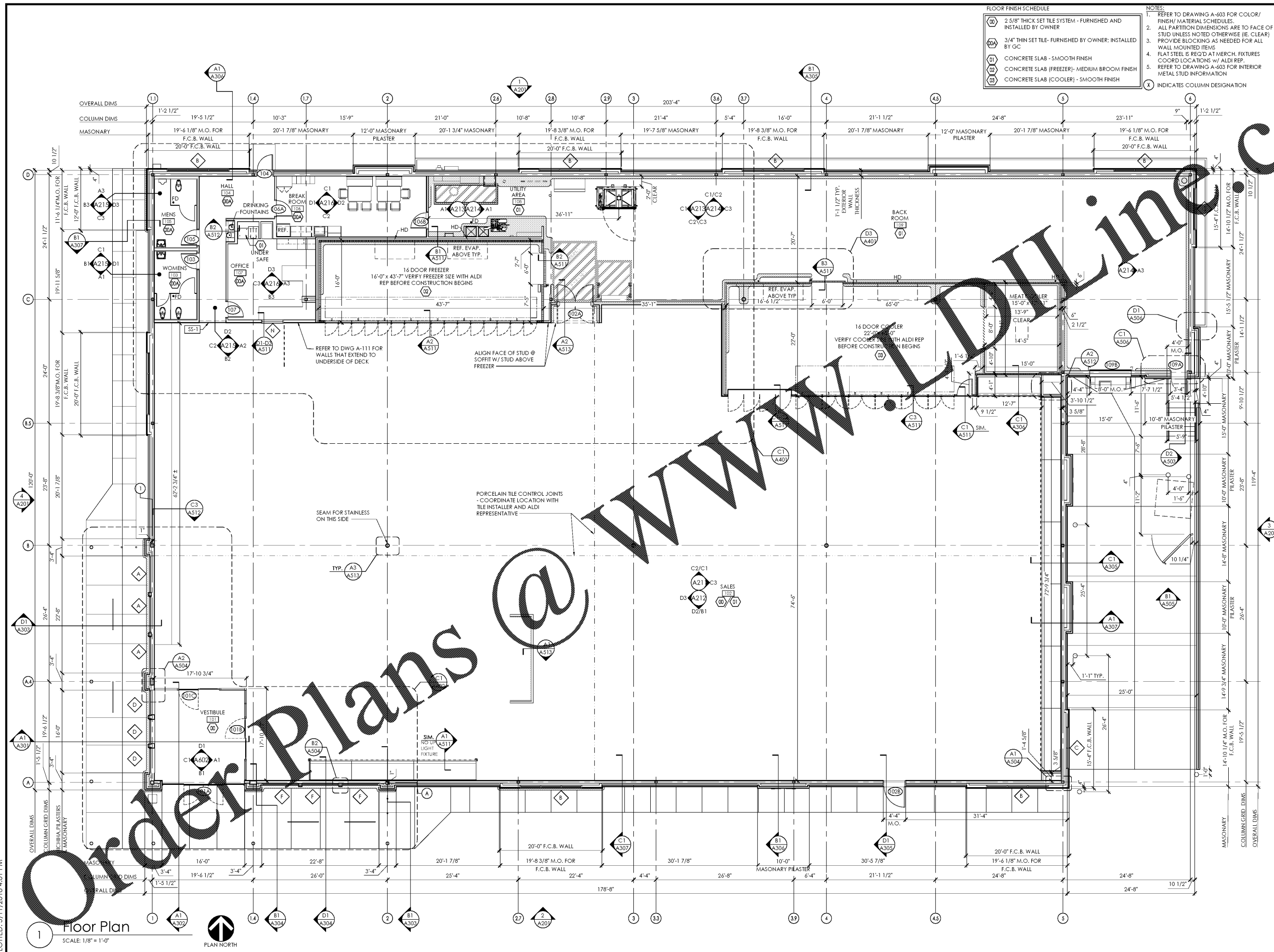
DRAWN BY: MEM/KNW
 REVIEWED BY: JAB

Seal

ALDI Inc.
 1985 Old Union Church Road
 Salisbury, NC 28146
 (704) 642-0023
 (704) 642-0079 fax

ALDI Inc. Store #: 65
 Charlotte, NC
 6113 Idlewild Road
 Charlotte, NC 28212
 Mecklenburg County
 Project Name & Location:

Floor Plan	
Drawing Name:	Project No.
Prototype Rls. 09/07/17	40452-13
Type: LHSD-V8	
	A-101
Scale: As Noted	Drawing No.



1 Floor Plan
 SCALE: 1/8" = 1'-0"
 PLAN NORTH

PLOTTED: 5/11/2018 4:01 PM