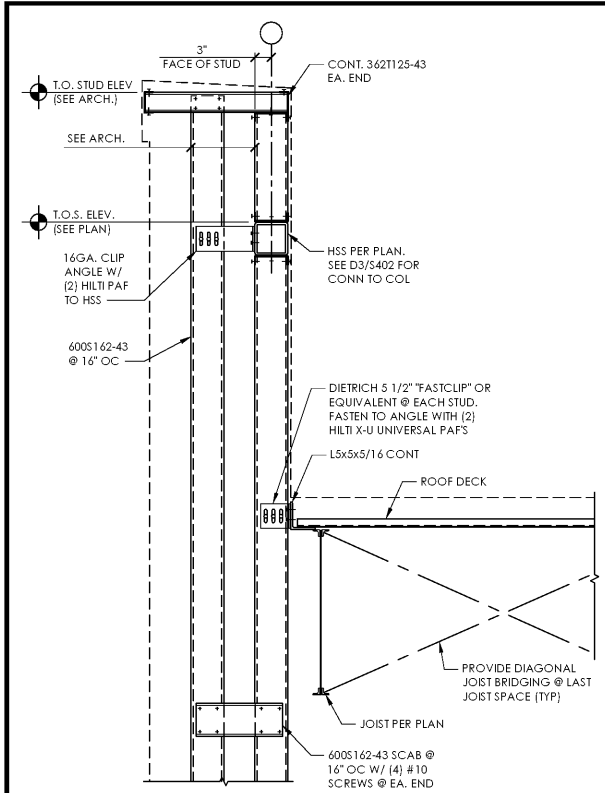
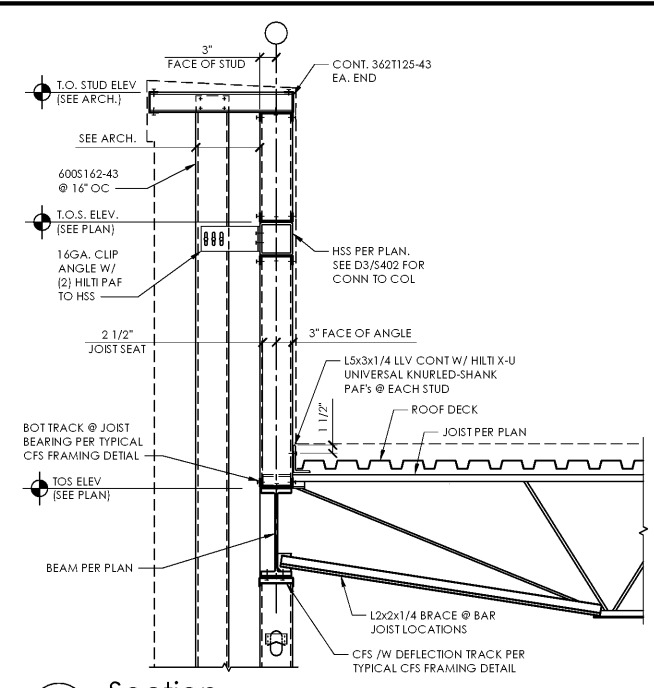


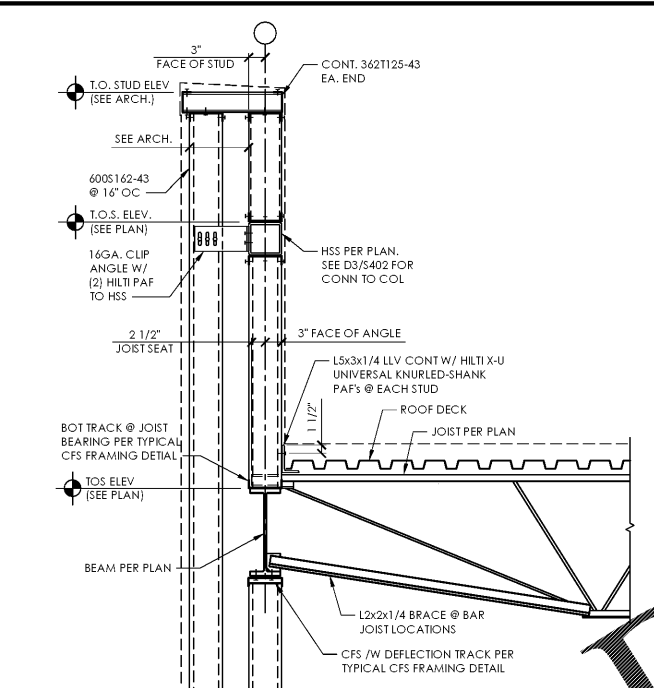
PLOTTED: 5/11/2018 8:55 AM



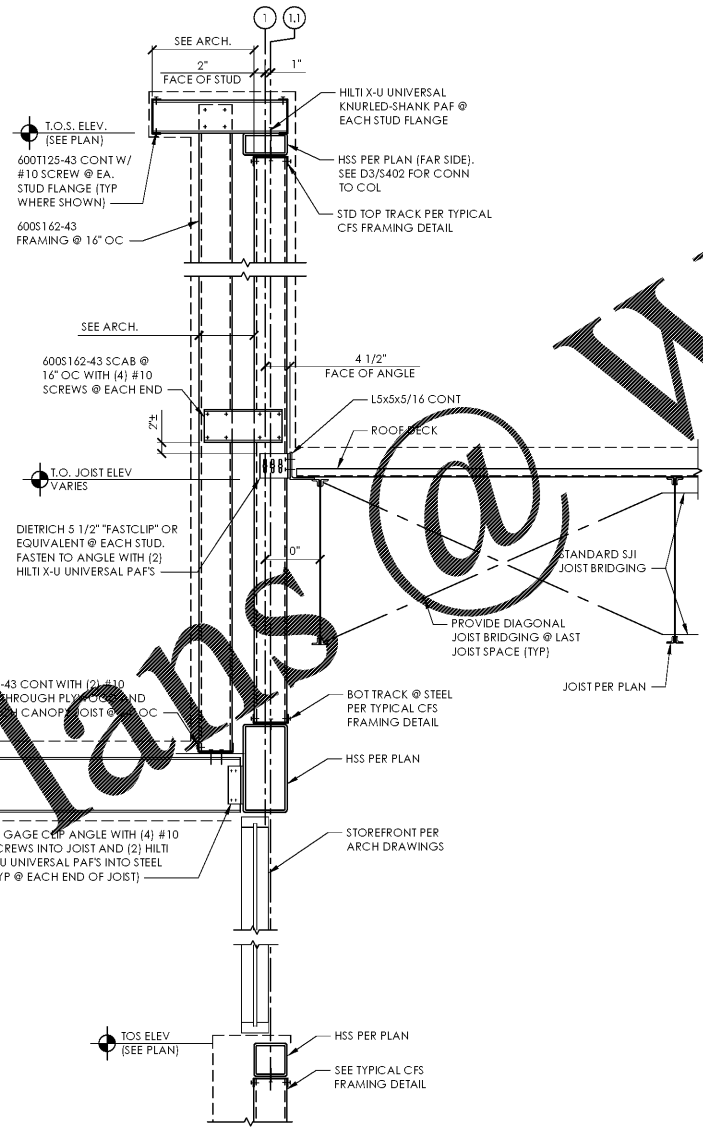
D3 Section
SCALE: 3/4" = 1'-0"



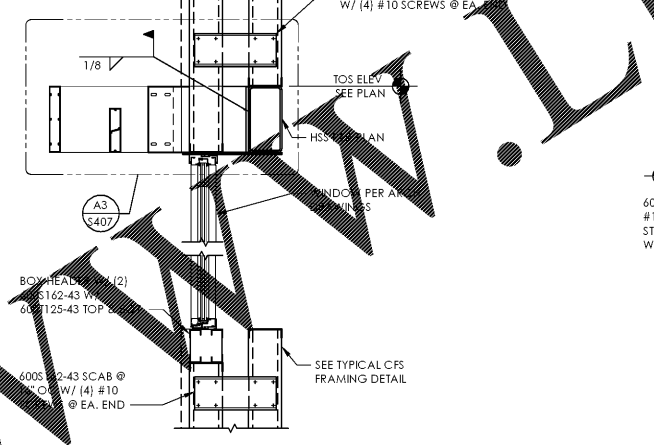
C3 Section
SCALE: 3/4" = 1'-0"



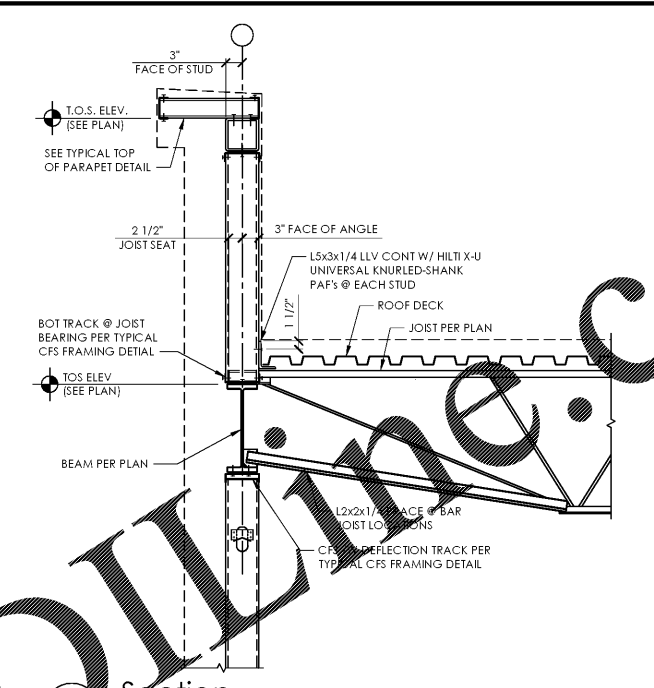
A3 Section
SCALE: 3/4" = 1'-0"



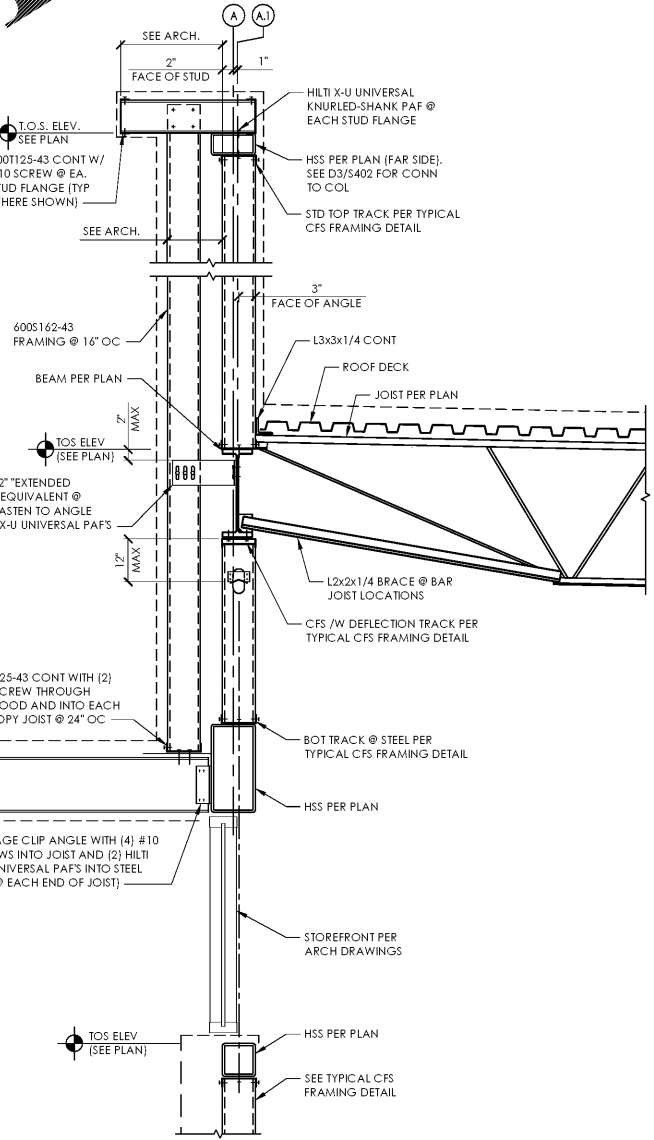
C1 Section
SCALE: 3/4" = 1'-0"



B2 Section
SCALE: 3/4" = 1'-0"



A1 Section
SCALE: 3/4" = 1'-0"



A2 Section
SCALE: 3/4" = 1'-0"

| Issued: | Date: |
|---------------------|----------|
| A Permit Set | 12/05/17 |
| B Client Review Set | 05/03/18 |
| C Bid Set | 05/11/18 |
| D | |

| Revisions: | Date: |
|------------|-------|
| 1 | |
| 2 | |
| 3 | |
| 4 | |
| 5 | |
| 6 | |
| 7 | |
| 8 | |
| 9 | |

DO NOT SCALE PLANS
 Copying, Printing, Software and other processes required to produce these prints on stretch or shrink the actual paper or layout. Therefore, scaling of this drawing may be inaccurate. Contact your consultants with any need for additional dimensions or clarifications.

ms consultants, inc.
 engineers, architects, planners
 920 Main Campus Drive
 Suite 430
 Raleigh, NC 27606-5213
 phone 919.772.5565
 fax 919.779.2308

DRAWN BY: CLS
 REVIEWED BY: CEM

Seal

ALDI Inc.
 1985 Old Union Church Road
 Salisbury, NC 28146
 (704) 642-0078 fax

ALDI Inc. Store #: 65
 Charlotte, NC
 6113 Idlewild Road
 Charlotte, NC 28212
 Mecklenburg County
 Project Name & Location:

| Steel Framing Section & Details | |
|---------------------------------|----------------------|
| Drawing Name: | |
| Prototype Rls. 09/07/17 | Project No. 40452-13 |
| Type: LHSD-V8 | |
| | S-403 |
| Scale: As Noted | Drawing No. |

Order Plans @ WWW.LDIDLINE.COM

D C B A