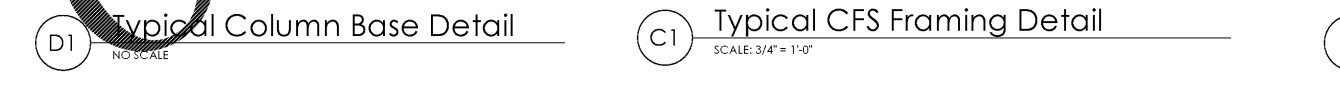
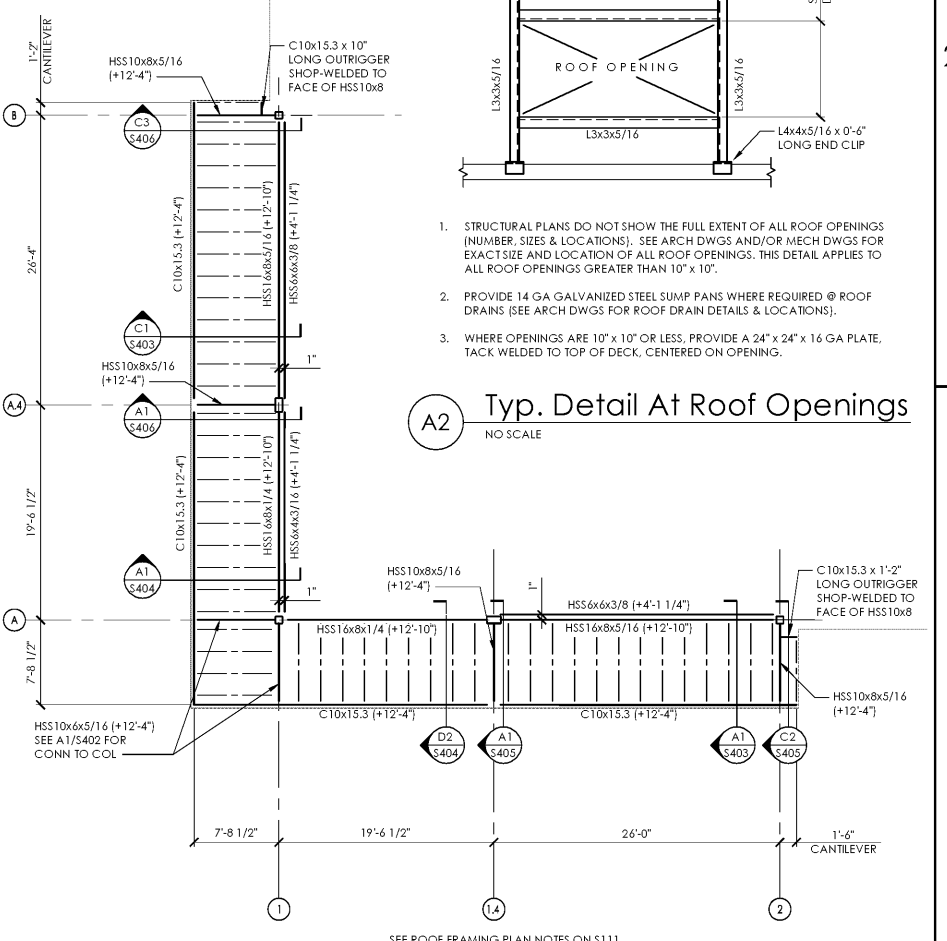
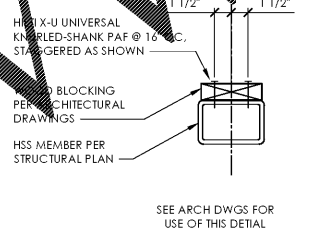
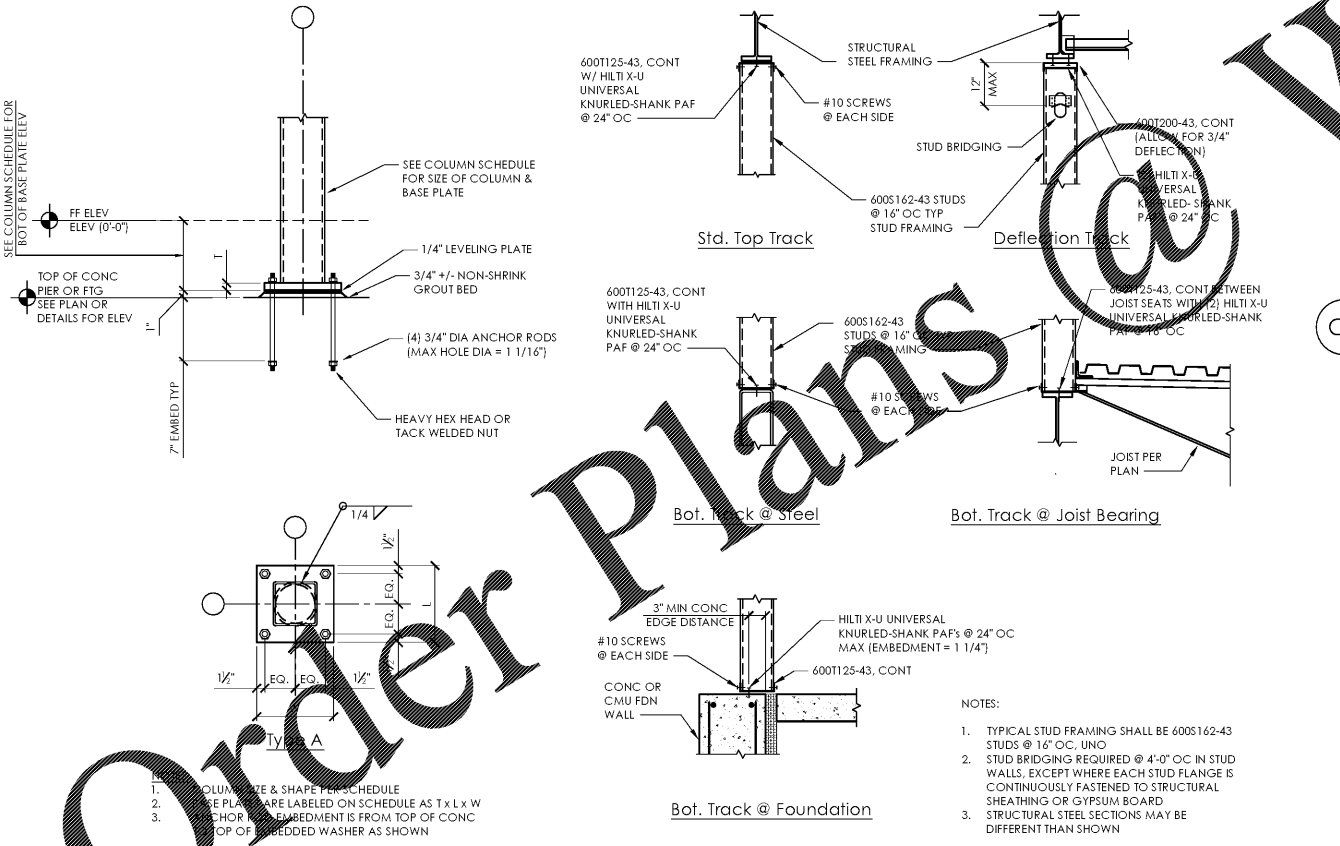
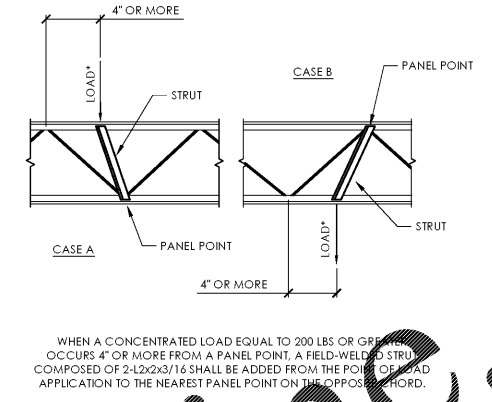
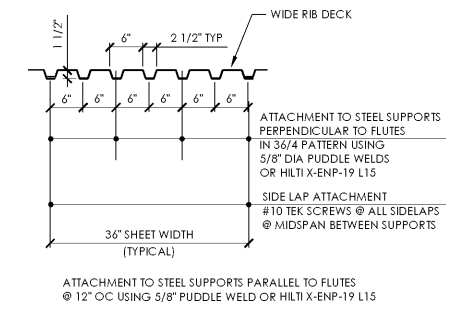


COLUMN SCHEDULE

COLUMN MARK	A	A.1	A.4	B	B.5	B.7	C	D
TOP OF STEEL DATUM ELEVATION (+14-6 1/4")								
LOW POINT								
FINISHED FLOOR ELEVATION (SEE GSN)								
DATUM ELEV (0'-0")								
BOTTOM OF BASE PLATE								
BASE PLATE SIZE & TYPE	3/4" x 14" x 14" (TYPE A)	3/4" x 22" x 14" (TYPE A)	3/4" x 14" x 14" (TYPE A)	3/4" x 12" x 12" (TYPE A)	3/4" x 12" x 12" (TYPE A)	3/4" x 17" x 12" (TYPE A)	3/4" x 17" x 12" (TYPE A)	3/4" x 17" x 12" (TYPE A)



Issued:	Date:
A Permit Set	12/05/17
B Client Review Set	05/03/18
C Bid Set	05/11/18
D	
Revisions:	Date:
1	
2	
3	
4	
5	
6	
7	
8	
9	

DO NOT SCALE PLANS  
Copying, Printing, Software and other processes required to produce these prints on e-trace or shrink the actual paper or layout. Therefore, scaling of this drawing may be inaccurate. Contact ms consultants with any need for additional dimensions or clarifications.

**ms consultants, inc.**  
engineers, architects, planners  
920 Main Campus Drive  
Suite 430  
Raleigh, NC 27606-5213  
phone 919.772.5565  
fax 919.779.2308

DRAWN BY: CLS  
REVIEWED BY: CEM

**ALDI Inc.**  
1965 Old Union Church Road  
Salisbury, NC 28146  
(704) 642-0023  
(704) 642-0078 fax

ALDI Inc. Store #: 65  
Charlotte, NC  
6113 Idlewild Road  
Charlotte, NC 28212  
Mecklenburg County  
Project Name & Location:

**Steel Framing Section & Details**  
Drawing Name:  
Prototype Rls. 09/07/17 Project No. 40452-13  
Type: LHSD-V8  
S-401  
Scale: As Noted Drawing No.

PLOTTED: 5/11/2018 8:54 AM