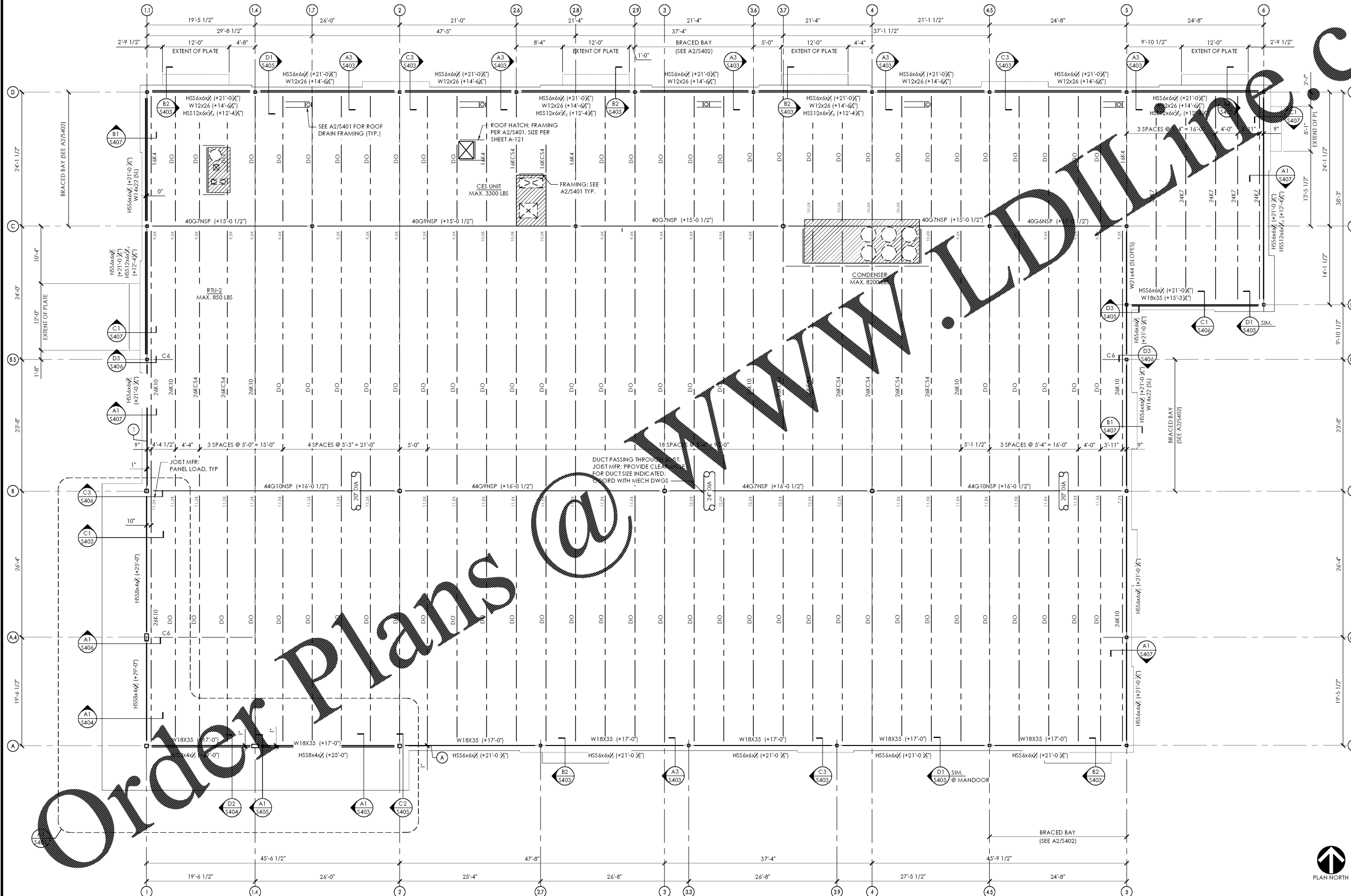


- TOP OF STEEL ELEVATIONS NOTED (+X'-X") ARE REFERENCED FROM FINISHED FLOOR DATUM ELEVATION. SEE GSN. (BOS+X'-X") REFERS TO BOTTOM OF STEEL ELEVATIONS.
- ROOF DECK SHALL BE 1 1/2" X 22 GAGE PAINTED TYPE B WIDE-RIB DECK. ALL EDGES OF ROOF DECK SHALL BEAR 1 1/2" MIN. ON STEEL PERIMETER ANGLE WITH ATTACHMENT PER THE TYPICAL ROOF DECK FASTENING SYSTEM DETAIL.
- SEE MECHANICAL & ARCHITECTURAL DRAWINGS FOR THE BALANCE OF ALL EQUIPMENT, ROOF PENETRATIONS, ETC. REQUIRED AT THIS LEVEL. GENERAL CONTRACTOR SHALL COORDINATE ALL RTU LOCATIONS AND PENETRATIONS WITH MECHANICAL CONTRACTOR PRIOR TO STEEL FABRICATION.
- DO NOT SCALE DRAWINGS. SEE ARCHITECTURAL FLOOR PLANS FOR ALL DIMENSIONS NOT INDICATED ON STRUCTURAL DRAWINGS.
- REACTIONS NOTED ARE COMBINED ASD LEVEL FORCES AND INCLUDE FRAMING SELF WEIGHT.
- JOIST MFR: DESIGN JOISTS AND JOIST GIRDERS FOR ALL LOADS NOTED IN THESE DWGS. SEE S-001 FOR REQD NET UPLIFT WIND LOADS. "TC=" AND "D=" INDICATE ASD LEVEL SEISMIC OR WIND FORCE (0.7E OR 0.6W) IN KIPS, APPLIED TO JOIST IN ADDITION TO STANDARD REQUIREMENTS OF SPECIFIED JOIST DESIGNATION. APPLY "TC" LOADS AXIALLY (TENSION OR COMPRESSION) TO JOIST TOP CHORD. DESIGN JOISTS TO TRANSFER "D" LOADS AXIALLY FROM TOP CHORD TO BOTTOM CHORD.
- JOIST MFR: PROVIDE JOIST BRIDGING IN ACCORDANCE WITH STEEL JOIST INSTITUTE CRITERIA.
- GC TO ENSURE ALL JOIST AND JOIST GIRDER TAGS ARE PROPERLY SECURED TO JOIST WEBBING AND CONCEALED FROM VIEW PRIOR TO PAINTING

STEEL DETAILER NOTE:

MEMBER CONDITIONS AT COLUMNS ARE REPRESENTED ON PLAN AS FOLLOWS:
 - □ = MEMBER FRAMES INTO SIDE OF COLUMN
 - ⊕ = MEMBER FRAMES OVER TOP OF COLUMN



Issued:	Date:
A Permit Set	12/05/17
B Client Review Set	05/03/18
C Bid Set	05/11/18
D	

Revisions:	Date:
1	
2	
3	
4	
5	
6	
7	
8	
9	

DO NOT SCALE PLANS
 Copying, Printing, Software and other processes required to produce these prints on stretch or shrink the actual paper or layout. Therefore, scaling of this drawing may be inaccurate. Contact us consultants with any need for additional dimensions or clarifications.

ms consultants, inc.
 engineers, architects, planners
 920 Main Campus Drive
 Suite 430
 Raleigh, NC 27606-5213
 phone 919.772.5565
 fax 919.779.2308

DRAWN BY: CLS
 REVIEWED BY: CEM

Seal

ALDI Inc.
 1985 Old Union Church Road
 Salisbury, NC 28146
 (704) 642-0022
 (704) 642-0078 fax

ALDI Inc. Store #: 65
 Charlotte, NC
 6113 Idlewild Road
 Charlotte, NC 28212
 Mecklenburg County
 Project Name & Location:

Roof Framing Plan	
Drawing Name:	Prototype Rls. 09/07/17
Project No.	40452-13
Type:	LHSD-V8
Scale: As Noted	Drawing No. S-111