
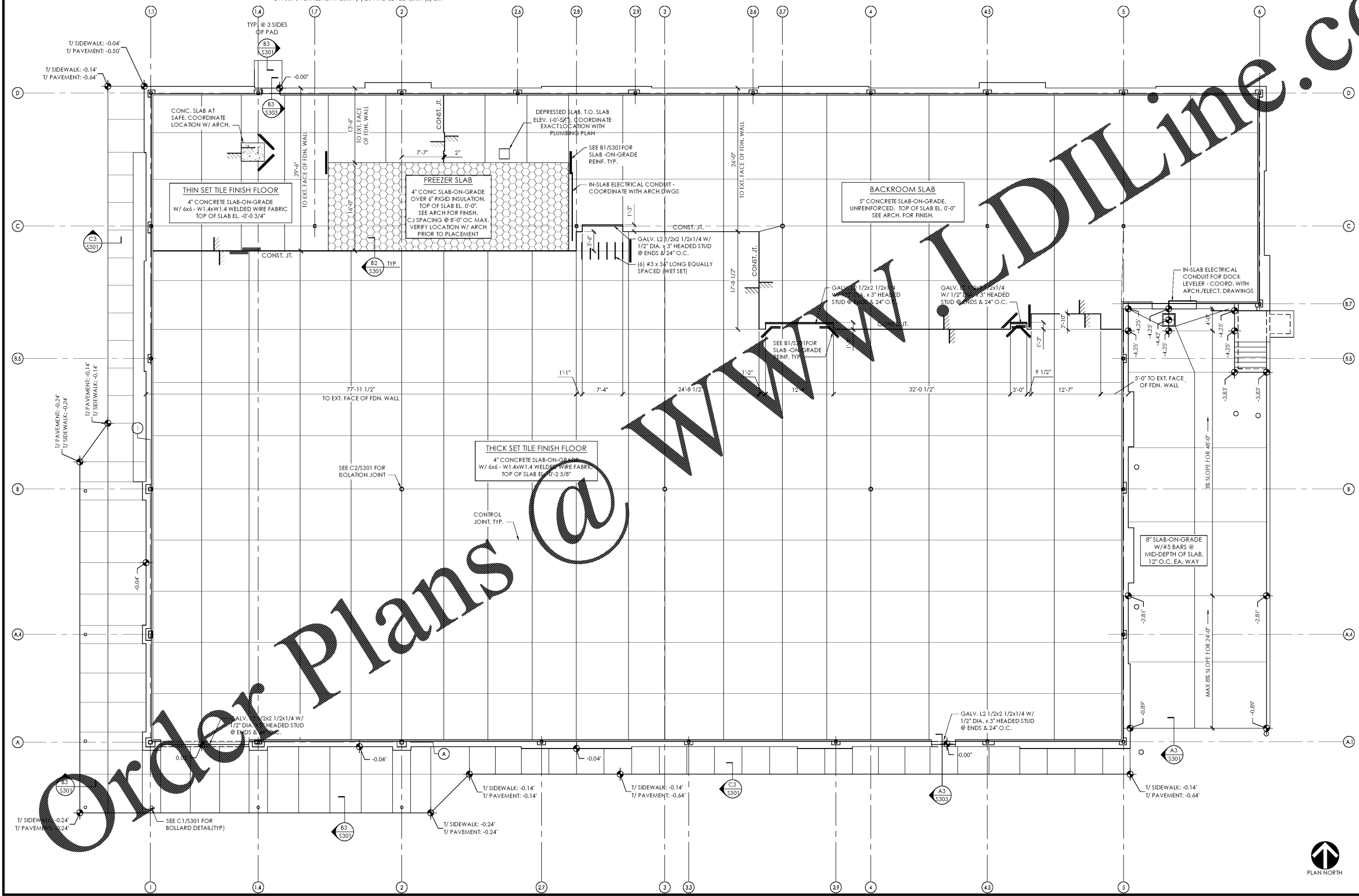


SLAB PLAN
1/8" = 1'-0"

- ELEVATIONS ARE REFERENCED FROM FINISHED FLOOR DATUM ELEVATION. SEE GSN.
- ALL SUB-BASE MATERIAL, THICKNESS AND PREPARATION SHALL BE IN ACCORDANCE WITH THE GEOTECHNICAL REPORT. SUB-BASE BENEATH TRUCK DOCK SLAB SHALL BE PER GEOTECHNICAL RECOMMENDATIONS FOR "HEAVY DUTY" PAVEMENT. SOIL BENEATH FOOTINGS SHALL BE INSPECTED AND APPROVED BY THE GEOTECHNICAL CONSULTANT PRIOR TO PLACING THE CONCRETE.
- SIDEWALK SLABS SHALL BE 4" SLAB-ON-GRADE WITH 6x6 - W2.1xW2.1 WELDED WIRE FABRIC.

-  = FREEZER SLAB LOCATION.
- SEE ARCHITECTURAL DRAWINGS FOR FLOOR FINISH REQUIREMENTS.
- IF REQUIRED BY SITE SPECIFIC CONDITIONS, PLACE A VAPOR BARRIER BETWEEN THE SOIL SUB-GRADE AND THE GRAVEL SUB-BASE.
- DO NOT SCALE DRAWINGS. SEE ARCHITECTURAL FLOOR PLANS FOR DIMENSIONS NOT INDICATED ON STRUCTURAL DRAWINGS.
- SECTIONS INDICATED ON PLAN ARE TYPICAL FOR SIMILAR CONDITIONS.
- CONTROL JOINTS SHOWN ARE SUGGESTED LOCATION. SEE SPEC.
- FLATNESS AND LEVELNESS REQUIREMENTS FOR INTERIOR SLABS PER ASTM E1155: OVERALL FLATNESS, F(F) 20 AND LEVELNESS, F(L) 20.



Issued:	Date:
A Permit Set	12/05/17
B Client Review Set	05/03/18
C Bid Set	05/11/18
D	

Revisions:	Date:
1	
2	
3	
4	
5	
6	
7	
8	
9	

DO NOT SCALE PLANS
Copying, Printing, Software and other processes required to produce these prints on stretch or shrink the actual paper or layout. Therefore, scaling of this drawing may be inaccurate. Contact us consultants with any need for additional dimensions or clarifications.



ms consultants, inc.
engineers, architects, planners
920 Main Campus Drive
Suite 430
Raleigh, NC 27606-5213
phone 919.772.5565
fax 919.779.2308

DRAWN BY: CLS
REVIEWED BY: CEM

Seal



ALDI Inc.
1985 Old Union Church Road
Salisbury, NC 28146
(704) 642-0022
(704) 642-0078 fax

ALDI Inc. Store #: 65
Charlotte, NC
6113 Idlewild Road
Charlotte, NC 28212
Mecklenburg County
Project Name & Location:

Slab Plan	
Drawing Name:	Project No.
Prototype Rls. 09/07/17	40452-13
Type: LHSD-V8	
	S-102
Scale: As Noted	Drawing No.



PLOTTED: 5/11/2018 8:52 AM