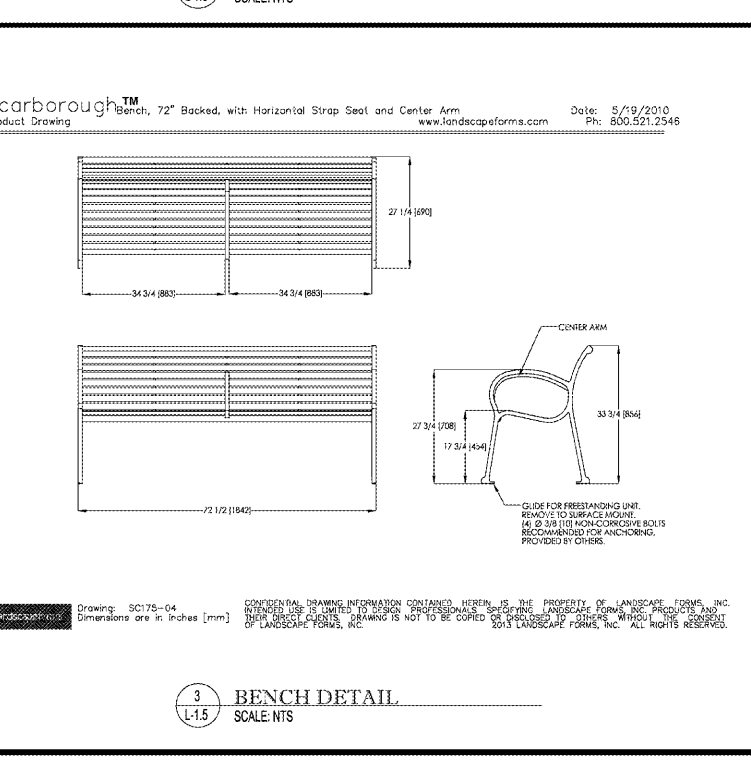
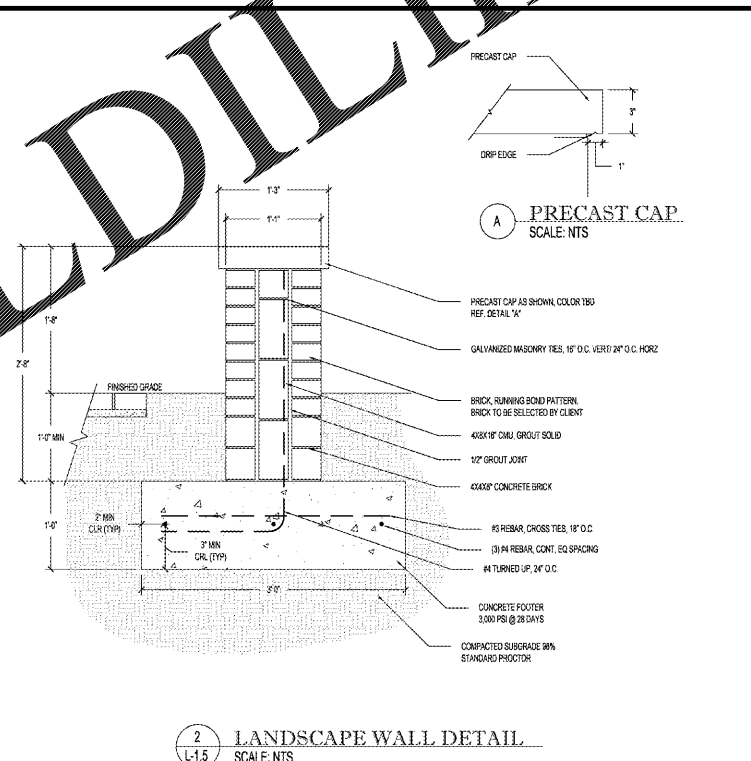
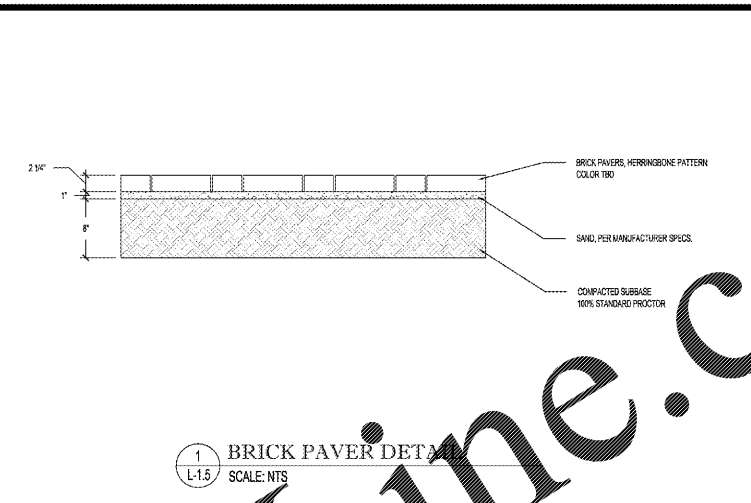


COMMUNITY PARK
1" = 5'



Order Plans @ www.LDILine.com

BOHLER ENGINEERING NO. PLLC
 1927 S. TRYON STREET, SUITE 310
 CHARLOTTE, NC 28203
 Phone: (880) 272-3400
 Fax: (880) 272-3401
 NC@BohlerEng.com

REV	DATE	COMMENT	BY
1	10/11/17	PER CITY OF CLT & NCDOT COMMENTS	SRF
2	11/28/17	PER CITY OF CLT & NCDOT COMMENTS	SRF

811
 KNOW WHAT'S BELOW
 ALWAYS CALL 811
 BEFORE YOU DIG
 It's fast. It's free. It's the law.

PROJECT NO.:	NCC162120
DRAWN BY:	SRF/AJS
CHECKED BY:	BWR
DATE:	8/8/17
SCALE:	AS NOTED
CAD I.D.:	LLO

PROJECT: **CONNECTION POINT**
 FOR
EASTSIDE CONNECTIONS JV, LLC
 LOCATION OF SITE
 MONROE RD & LONG AVE
 CHARLOTTE, NC 28212
 MECKLENBURG COUNTY

BOHLER ENGINEERING NO. PLLC
 1927 S. TRYON STREET, SUITE 310
 CHARLOTTE, NC 28203
 Phone: (880) 272-3400
 Fax: (880) 272-3401
 NC@BohlerEng.com

Professional Engineer Seal
 No. 31128
 11/28/17

SHEET TITLE: **AMENITY PLAN**
 SHEET NUMBER: **L-1.5**

Drawing: SC175-04
 Dimensions are in inches [mm]
 CONFIDENTIAL DRAWING INFORMATION CONTAINED HEREIN IS THE PROPERTY OF LANDSCAPE FORMS, INC. UNAUTHORIZED USE IS LIMITED TO DESIGN PROFESSIONALS SPECIFICALLY IDENTIFIED IN THIS DRAWING. ANY REPRODUCTION OR TRANSMISSION OF THIS DRAWING IS NOT TO BE COPIED OR PUBLISHED IN ANY MANNER WITHOUT THE EXPRESS WRITTEN PERMISSION OF LANDSCAPE FORMS, INC. ALL RIGHTS RESERVED. 2013 LANDSCAPE FORMS, INC.