

KEY	QTY.	BOTANICAL NAME	COMMON NAME	CAL.	CONT.	SIZE	Remarks
QUFH	51	Quercus phellos 'Hightower'	Hightower Willow oak	3" CAL	B+8	12-14 HT	Full Canopy Leader
QUAM	37	Quercus rubra	Red Oak	3" CAL	B+8	12-14 HT	Full Canopy Leader
ULPA	47	Ulmus parviflora 'Aler'	Minor Leafed Elm	3" CAL	B+8	12-14 HT	Full

LANDSCAPE COMPLIANCE CHART

PLANTING STRIP	REQUIREMENT	CALCULATION
1 LARGE MATURING TREE FOR EVERY 40 LF OF FRONTAGE MINIMUM 3" CAL.	MINIMUM 8" WIDE STRIP BETWEEN ROAD & SIDEWALK	IDEAL WID. REQ: 80 LF - 201 LF ACCESS RDS = 121 LF REQUIRED: 10 TREES PROVIDED: 19 TREES 47 O.C.
		LONG AVE: 153 LF - 150 LF ACCESS RDS = 99 LF X 2 REQUIRED: 6 TREES PROVIDED: 51 TREES 40 O.C.
		CONNECTION POINT BLVD: CENTERLINE = 124 LF X 2 - 248 LF REQUIRED: 47 TREES PROVIDED: 47 TREES 40 O.C.
		TWO WIND WAYS 248 LF - 40 LF = 496 LF X 2 REQUIRED: 10 TREES PROVIDED: 10 TREES 47 O.C.
		ZEPHYR WIND WAY 248 LF - 30 LF = 218 LF X 2 REQUIRED: 8 TREES PROVIDED: 7 TREES 47 O.C.
TREE SAVE	NS - 10% TREE SAVE REQUIRED (PARCELS 5 & 6)	NS 10% ON SITE (2.15 AC X .10) X 500 / 100 = \$21,500 PAID IN LIEU OR 320 AC
	MUD - 10% OF 1% TREE SAVE REQUIRED (PARCELS 1, 2, 3, 4, AND 7)	MUD: 8.00 AC ON SITE (8.00 AC X .25) X 500 / 100 = \$10,000 PAID IN LIEU OR 1.60 AC
	B2 - 10% OF 1% TREE SAVE REQUIRED (OUTPARCELS 1, 2, 3)	B2 - 10% ON SITE (3.37 AC X .25) X 500 / 100 = \$41,875 PAID IN LIEU OR 758 AC
		TOTAL REQUIRED - \$230,729 PAID IN LIEU OR 2,381 AC

BOHLER ENGINEERING PLLC
 REGISTERED PROFESSIONAL ENGINEER
 STATE OF NORTH CAROLINA
 LICENSE NO. 41128
 1927 S. TRYON STREET, SUITE 310
 CHARLOTTE, NC 28203
 Phone: (888) 272-3400
 Fax: (980) 272-3401
 NC@BohlerEng.com

REVISIONS

REV	DATE	COMMENT	BY
1	10/11/17	PER CITY OF CLT & NCDOT COMMENTS	SRF
2	11/29/17	PER CITY OF CLT & NCDOT COMMENTS	SRF
3	1/9/18	PER MECKLENBURG COUNTY COMMENTS	SRF

811
 KNOW WHAT'S BELOW
 ALWAYS CALL 811
 BEFORE YOU DIG
 It's fast. It's free. It's the law.

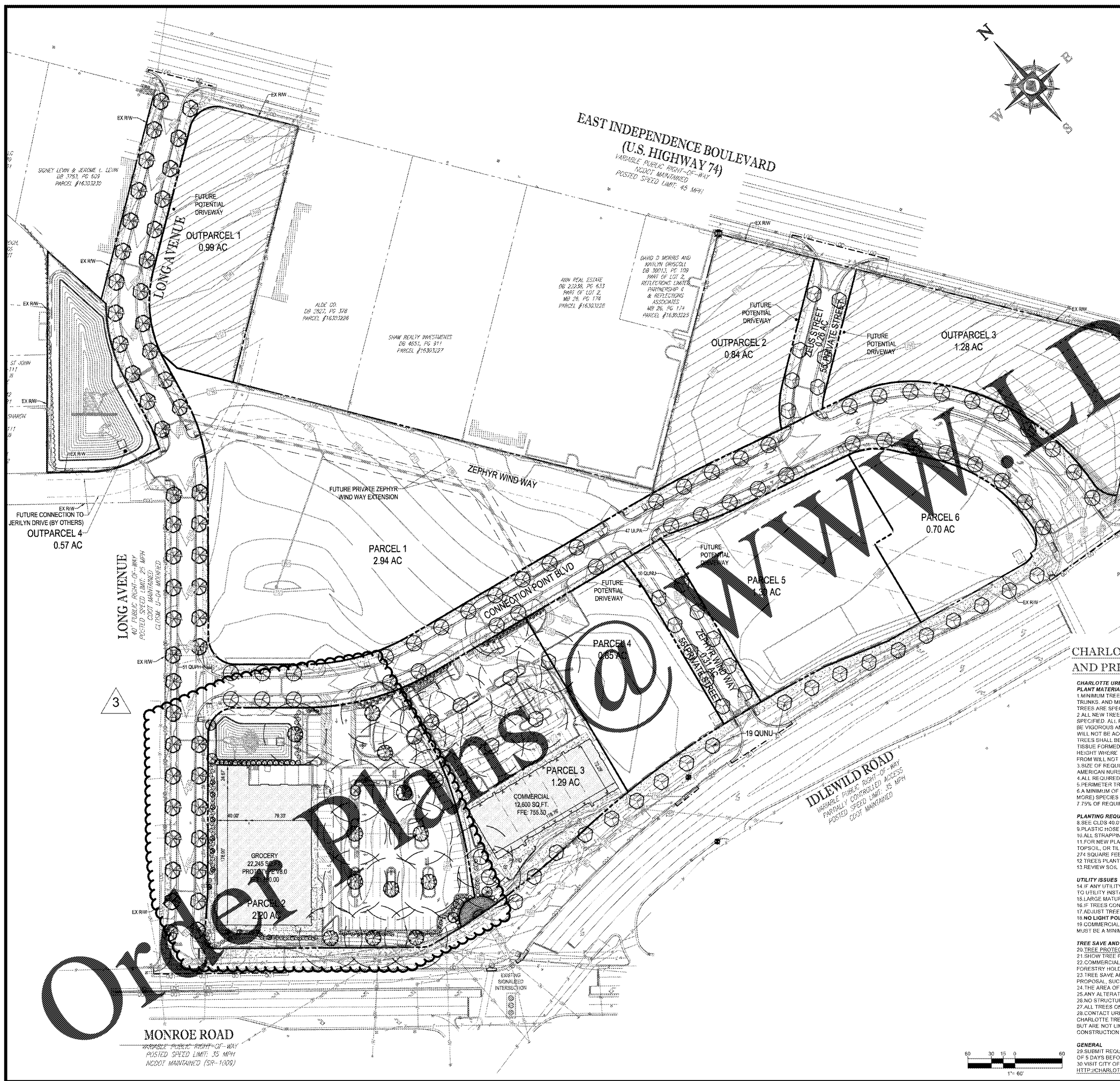
PROJECT No.: NCC162120
 DRAWN BY: SRF/AJS
 DATE: 8/8/17
 SCALE: 1"=60'
 CAD I.D.: LLO

CONNECTION POINT
 FOR
EASTSIDE CONNECTIONS JV, LLC
 LOCATION OF SITE
 MONROE RD & LONG AVE
 CHARLOTTE, NC 28212
 MECKLENBURG COUNTY

BOHLER ENGINEERING, INC., PLLC
 1927 S. TRYON STREET, SUITE 310
 CHARLOTTE, NC 28203
 Phone: (888) 272-3400
 Fax: (980) 272-3401
 NC@BohlerEng.com

REGISTERED PROFESSIONAL ENGINEER
 STATE OF NORTH CAROLINA
 LICENSE NO. 41128
 1/9/18

OVERALL LANDSCAPE PLAN
 SHEET NUMBER:
L-1.0



CHARLOTTE URBAN FORESTRY - TREE PLANTING AND PRESERVATION REQUIREMENTS

CHARLOTTE URBAN FORESTRY - TREE PLANTING AND PRESERVATION REQUIREMENTS (UPDATED 10/10/16)

PLANT MATERIAL
 1. MINIMUM TREE SIZE AT PLANTING IS 2" CALIPER AND 8' TALL FOR SINGLE-STEM TREES. ALL MULTI-STEM PLANTS MUST BE TREE FORM, MAXIMUM 3 TO 5 TRUNKS, AND MINIMUM 10' TALL, WHERE 3" SINGLE-STEM CALIPER TREES ARE SPECIFIED/REQUIRED THE MINIMUM HEIGHT SHALL BE 10' TALL, IF MULTI-STEM TREES ARE SPECIFIED THEN THEY SHALL BE A MINIMUM OF 12' TALL.
 2. ALL NEW TREES MUST HAVE STRAIGHT TRUNKS WITH STRONG CENTRAL LEADERS INTACT TO THE TOP OF THE CROWN UNLESS MULTI-STEM TREES ARE SPECIFIED. ALL REQUIRED TREES SHALL BE TYPICAL OF THE SPECIES AND VARIETY, HAVE NORMAL GROWTH HABITS, HAVE WELL DEVELOPED BRANCHES, BE VIGOROUS AND HAVE FIBROUS ROOT SYSTEMS. TREES WITH MAJOR GIRDLING ROOTS WILL NOT BE ACCEPTED. TREES WITH CO-DOMINANT BRANCHING WILL NOT BE ACCEPTED. TREES THAT HAVE BEEN SHEARED, TOPPED OR CUT BACK TO MULTIPLY THE BRANCHING STRUCTURE WILL NOT BE ACCEPTED. TREES SHALL BE FREE OF DISEASE, PESTS AND CRACKS. ALL PRUNING CUTS GREATER THAN 1/2" DIAMETER SHALL HAVE CALLUS TISSUE FORMED PRIOR TO PLANTING. NO PRUNING CUT ON THE TRUNK SHALL BE MORE THAN ONE-HALF THE DIAMETER OF THE CENTRAL LEADER AT THE HEIGHT WHERE THE CUT WAS MADE. ROOT FLARES SHALL BE LOCATED AT GRADE. TREES WITH MORE THAN 2" OF SOIL COVERING THE ROOT BALL/FLECK FROM WILL NOT BE ACCEPTED (GLS 46.09).
 3. SIZE OF REQUIRED PLANTS, SPREAD OF ROOTS AND SIZE OF BALLS SHALL BE IN ACCORDANCE WITH ANSI Z66.1 (LATEST EDITION) AS PUBLISHED BY THE AMERICAN NURSERY & LANDSCAPE ASSOCIATION, EXCEPT WHERE SPECIFIED/AUTHORIZED BY URBAN FORESTRY.
 4. ALL REQUIRED TREES OF A PARTICULAR SPECIES AND VARIETY SHALL BE UNIFORM IN SIZE AND CONFIGURATION.
 5. PERIMETER TREES IN URBAN ZONES SHALL BE 3" IN CALIPER AND BE FREE OF BRANCHES UP TO 8' FROM THE TOP OF ROOT CROWN (BALL).
 6. A MINIMUM OF 50% OF NEW TREES MUST BE NATIVE SPECIES, AND SITES WITH MORE THAN 20 TREES REQUIRED WILL HAVE TO INSTALL MULTIPLE (3 OR MORE) SPECIES PURSUANT TO THE TREE ORDINANCE GUIDELINES.
 7. 75% OF REQUIRED TREES MUST BE LARGE MATURE SPECIES EXCEPT IN SITUATIONS WITH OVERHEAD POWER LINE CONFLICTS.

PLANTING REQUIREMENTS
 8. SEE CLDS 40.01 & 40.09 (ON PLAN) FOR DETAILED TREE PLANTING REQUIREMENTS.
 9. PLASTIC HOSE PARTS WILL NOT BE ACCEPTED FOR TREE STAKING. SEE CLDS 40.01 FOR APPROVED STAKING METHODS/MATERIALS.
 10. ALL STRAPPING, AND TOP 1/3 OF WIRE BASKET AND BURLAP MUST BE CUT AWAY AND REMOVED FROM ROOT BALL WHEN PLANTING.
 11. FOR NEW PLANTING AREAS, REMOVE ALL FAVEMENT, GRAVEL SUB-BASE AND CONSTRUCTION DEBRIS, REMOVE COMPACTED SOIL AND ADD 18" NEW TOPSOIL, OR TILL AND AMEND THE TOP 18" OF EXISTING SOIL TO MEET TOPSOIL/PLANTING MIX STANDARDS FOR TREES (WITHIN ENTIRE MINIMUM AREA OF 274 SQUARE FEET).
 12. TREES PLANTED ON PUBLIC PROPERTY WILL NEED APPROVAL FROM THE CITY ARBORIST AND/OR NCDOT.
 13. REVIEW SOIL REQUIREMENTS IN THE TREE ORDINANCE GUIDELINES AT: [HTTP://CHARLOTTENC.GOV/LD](http://charlottenc.gov/ld) THEN CLICK TREES.

UTILITY ISSUES
 14. IF ANY UTILITY IS BEING INSTALLED IN OR NEAR ANY REQUIRED TREE(S) OR TREE SAVE AREA(S), CALL URBAN FORESTRY SPECIALIST TO RESOLVE PRIOR TO UTILITY INSTALLATION.
 15. LARGE MATURING TREES MAY NOT BE PLANTED WITHIN 25' OF OVERHEAD POWER DISTRIBUTION OR TRANSMISSION LINES.
 16. IF TREES CONFLICT WITH ANY UTILITIES OR SIGNS, CALL URBAN FORESTRY TO RESOLVE BEFORE PLANTING.
 17. ADJUST TREE PLANTING LOCATIONS TO AVOID EXISTING UNDERGROUND UTILITIES. PLANT 15' FROM ALL UNDERGROUND UTILITIES.
 18. NO LIGHT POLES, UTILITIES OR TRANSFORMERS CAN BE INSTALLED IN TREE ISLANDS.
 19. COMMERCIAL SCALE LIGHTING (15' IN HEIGHT) MUST BE A MINIMUM DISTANCE OF 30' FROM A TREE. PEDESTRIAN SCALE LIGHTING (5' 15" IN HEIGHT) MUST BE A MINIMUM DISTANCE OF 15' FROM A TREE. SHOW SITE LIGHTING ON LANDSCAPE PLAN.

TREE SAVE AND PRESERVATION
 20. TREE PROTECTION MUST BE INSTALLED AND VERIFIED BY URBAN FORESTRY PRIOR TO STARTING ANY CONSTRUCTION ACTIVITY.
 21. SHOW TREE PROTECTION AND TREES SAVE AREAS ON EROSION CONTROL, GRADING AND LANDSCAPE PLAN SHEETS.
 22. COMMERCIAL TREE SAVE AREAS MUST BE RECORDED ON A FINAL PLAT WITH THE MECKLENBURG COUNTY REGISTER OF DEEDS BEFORE URBAN FORESTRY HOLDS CAN BE RELEASED. A 10' NO BUILD ZONE AROUND TREE SAVE AREAS MUST BE REFERENCED ON THE PLAT.
 23. TREE SAVE AREAS SHALL BE FREE OF INVASIVE PLANT SPECIES. IF AN AREA PROPOSED FOR TREE SAVE CONTAINS INVASIVE PLANT SPECIES AT TIME OF PROPOSAL, SUCH INVASIVE PLANT SPECIES SHALL BE REMOVED PRIOR TO FINAL CO.
 24. THE AREA OF ANY EASEMENTS (WATER, SEWER, UTILITY, ETC.) CAN NOT BE COUNTED TOWARD THE TREE SAVE REQUIREMENT.
 25. ANY ALTERATIONS TO TREE SAVE AREAS MUST BE ACCOMPLISHED WITHOUT MECHANIZED EQUIPMENT.
 26. NO STRUCTURE WILL BE ALLOWED WITHIN 10' OF TREE SAVE AREAS UNLESS APPROVED BY URBAN FORESTRY.
 27. ALL TREES ON PUBLIC PROPERTY ARE PROTECTED AND REMOVAL MUST BE PERMITTED BY THE CITY ARBORIST (704)336-4262.
 28. CONTACT URBAN FORESTRY SPECIALIST PRIOR TO ANY CRANE SET-UP, MACHINERY OPERATION OR TEMPORARY BUILDING ERECTION THAT MAY IMPACT CHARLOTTE TREE ORDINANCE PROTECTED TREES OR TREE SAVE AREAS, INCLUDING TREES LOCATED IN STREET RIGHT-OF-WAY. IMPACTS MAY INCLUDE BUT ARE NOT LIMITED TO: ENCRoACHING WITHIN TREE DRIP-LINES, EXCAVATION, SOIL COMPACTION, TREE TRIMMING, ERECTING AND DISMANTLING OF CONSTRUCTION CRANES.

GENERAL
 29. SUBMIT REQUIRED COHOLD RELEASE FORM AT [HTTP://CHARLOTTENC.GOV/LD](http://charlottenc.gov/ld) FOR AN INSPECTION OF TREE PROTECTION/PLANTING AREAS. A MINIMUM OF 5 DAYS BEFORE THE COHOLD RELEASE IS NEEDED.
 30. VISIT CITY OF CHARLOTTE'S LAND DEVELOPMENT WEBSITE FOR ADDITIONAL INFORMATION AND URBAN FORESTRY REQUIREMENTS: [HTTP://CHARLOTTENC.GOV/LD](http://charlottenc.gov/ld) THEN CLICK TREES.