

Symbol	Qty	Label	Arrangement	Lumens/Lamp	LLF	Total Watts	Description
5	L21	SINGLE	4108	1,010	210	XSPW403MC-LCSP	
6	L23	SINGLE	N.A.	1,000	298.42	AL-42WLED-UD-CG-120	
4	L31	SINGLE	11648	1,000	344	OSQ-A-NM-4ME-B-57K-UL-CS W/ OSQ-DACS DIRECT ARM	
2	L34	4 @ 90 DEGREES	11648	1,000	888	OSQ-A-NM-4ME-B-57K-UL-CS W/ OSQ-DACS DIRECT ARM	

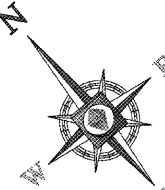
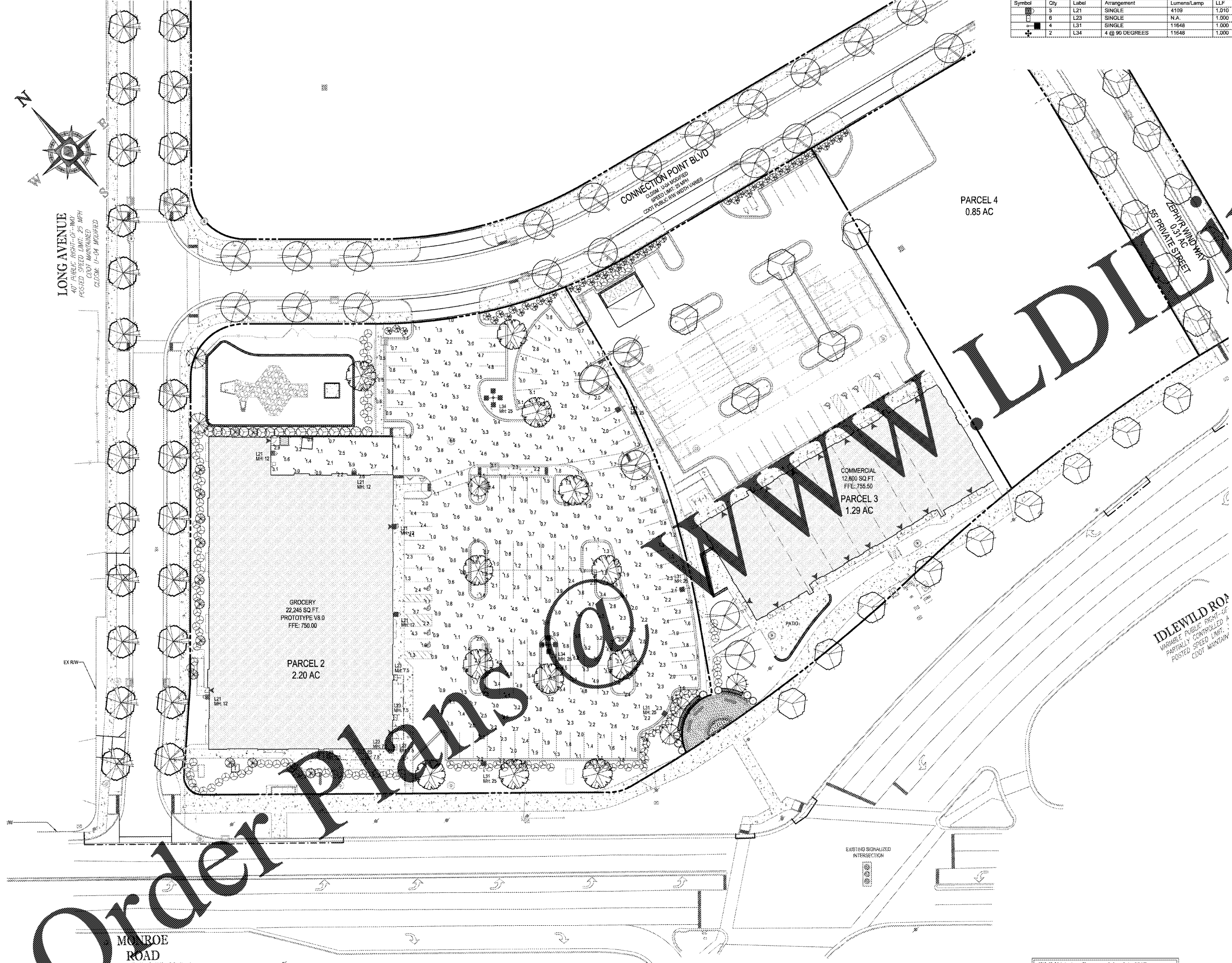
Footcandle calculated using initial lumen values				
Label	Avg	Max	Min	Max/Min
PAVEMENT	2.42	9.1	0.3	30.33

NATIONAL ACCOUNT PRICING, PLEASE CALL MIKE KREINER AT CREE LIGHTING
224-250-1561 OR MIKE.KREINER@CREE.COM

EQUIPMENT SCHEDULE:
(1) CL-SSP-4011-25-D1-PS-ABL (22' x 4' x 11ft) Steel Square Arm
(2) CL-SSP-4011-25-D6-PS-ABL (22' x 4' x 11ft) Steel Square Arm
Proposed Poles Meet 100MPH Sustained Winds.

(12) OSQ-DACS DIRECT ARM MOUNT
MOUNT 22' POLE ONLY CONCRETE BASE 1100-25

3



LONG AVENUE
45' PUBLIC RIGHT-OF-WAY
POSTED SPEED LIMIT: 25 MPH
CROSS-MANITAINED
CLOSURE: 11-04 MAINTAINED

CONNECTION POINT BLVD
CLOSURE: 11-04 MAINTAINED
SPEED LIMIT: 25 MPH
CROSS-PUBLIC-R/W WIDTH: 40'

IDLEWILD ROAD
VARIABLE PUBLIC RIGHT-OF-WAY
PARTIALLY CONTROLLED
POSTED SPEED LIMIT
CLOSURE MAINTAINED

MONROE ROAD
VARIABLE PUBLIC RIGHT-OF-WAY
POSTED SPEED LIMIT: 35 MPH
CROSS-MANITAINED (SR-1009)



Order Plans @ www.LDOnline.com

C-13.0 PHOTOMETRIC PLAN
FOR REFERENCE ONLY



1200 52nd Street - Shoreview, WI 53177
www.cree.com - (800) 238-6900

DLC V4 is in effect as of April 1, 2017, which impacts the rebate eligibility of many LED products. If you require DLC-qualified fixtures, please reference <https://www.designlights.org/search/> for updated qualified product listings. Email rebates@cree.com or mailto:rebates@cree.com for assistance.

Project Name: ALDI - CHARLOTTE, NC
Date: 1/6/2018 Scale: 1"=30' Footcandle calculated at grade
Filename: V:\CommonAppEng\NATALD-170705CHNCC\B AGI Layout by: CHRIS BOSANEC
SR-24574

Illustrative results shown on this lighting design are based on project parameters provided to Cree, Inc. used in conjunction with luminaires test procedures conducted under laboratory conditions. Actual project conditions differing from these design parameters may affect field results. The customer is responsible for verifying dimensional accuracy along with compliance with any applicable electrical, lighting, or energy code.