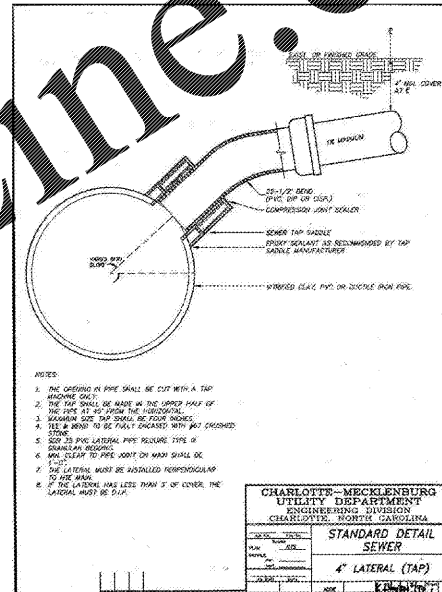


Order Plans

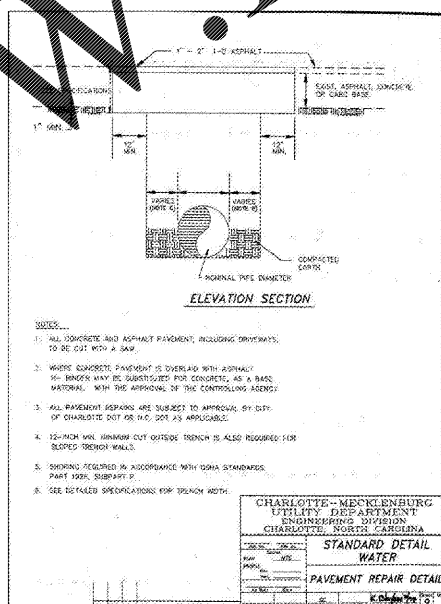
@

WWW.LDILINE.COM



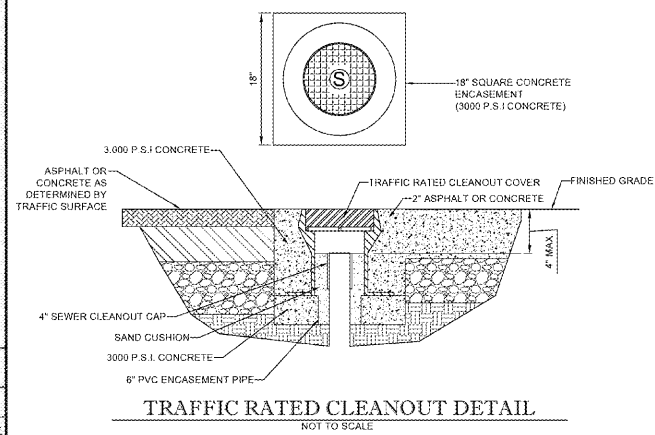
- NOTES:
1. THE OPENING IN PIPE SHALL BE CUT WITH A TAP MACHINE ONLY.
 2. THE TAP SHALL BE MADE IN THE LOWER HALF OF THE PIPE 24\"/>

CHARLOTTE-MECKLENBURG UTILITY DEPARTMENT
ENGINEERING DIVISION
CHARLOTTE, NORTH CAROLINA
STANDARD DETAIL
SEWER
4" LATERAL (TAP)

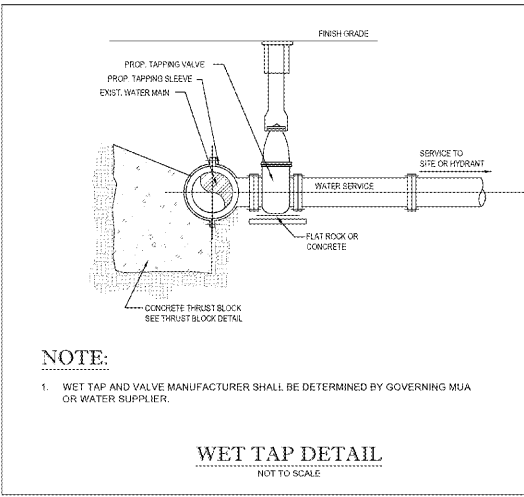


- NOTES:
1. ALL CONCRETE AND ASPHALT PAVEMENT, INCLUDING DRIVEWAYS, TO BE CUT WITH A SAW.
 2. WHERE EXISTING PAVEMENT IS OVERLAIN WITH ASPHALT OR BRICKS, HAVE AN UNDERLAYER FOR CONCRETE AS A BASE MATERIAL. WITH THE APPROVAL OF THE CONTROLLING AGENCY.
 3. ALL PAVEMENT REPAIRS ARE SUBJECT TO APPROVAL BY CITY OF CHARLOTTE DOT PER M.C. 209 AS APPLICABLE.
 4. 12-INCH WIDE, 4-INCH DEEP TRENCH IS ALSO REQUIRED FOR SUSPENDED TRENCH WALLS.
 5. TRENCHES REQUIRED IN ASPHALT SHALL BE REPAIRED PER PART 1909, SUBPART P.
 6. SEE RELATED SPECIFICATIONS FOR TRENCH WIDTH.

CHARLOTTE-MECKLENBURG UTILITY DEPARTMENT
ENGINEERING DIVISION
CHARLOTTE, NORTH CAROLINA
STANDARD DETAIL
PAVEMENT REPAIR DETAIL

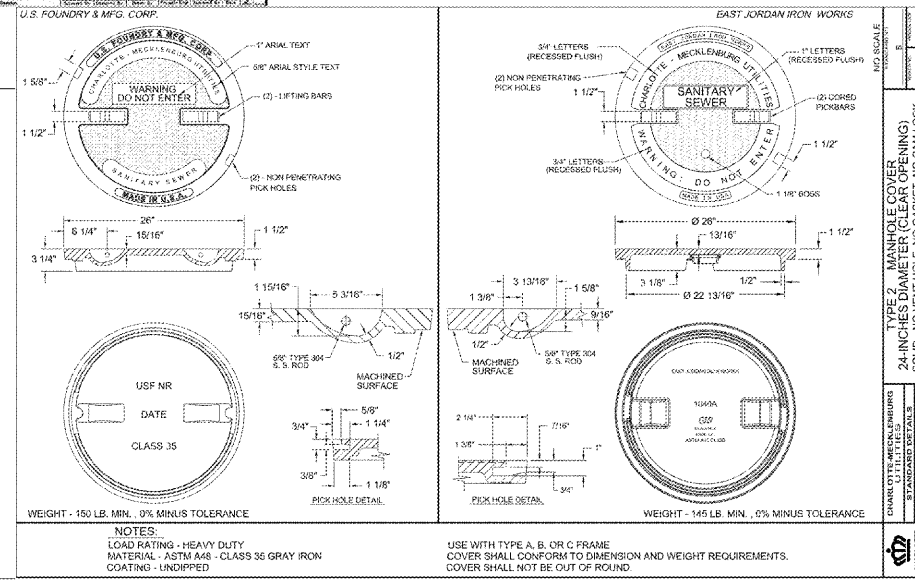


TRAFFIC RATED CLEANOUT DETAIL
NOT TO SCALE



- NOTE:
1. WET TAP AND VALVE MANUFACTURER SHALL BE DETERMINED BY GOVERNING MUA OR WATER SUPPLIER.

WET TAP DETAIL
NOT TO SCALE



WEIGHT - 150 LB. MIN., 0% MINUS TOLERANCE
NOTES:
LOAD RATING - HEAVY DUTY
MATERIAL - ASTM A48 - CLASS 30 GRAY IRON
COATING - UNPAINTED
USE WITH TYPE A, B, OR C FRAME
COVER SHALL CONFORM TO DIMENSION AND WEIGHT REQUIREMENTS.
COVER SHALL NOT BE OUT OF ROUND

REVISIONS

REV	DATE	COMMENT	BY
1	10/11/17	PER CITY OF CLT & NCDOT COMMENTS	SRF
2	11/28/17	PER CITY OF CLT & NCDOT COMMENTS	SRF

811
KNOW WHAT'S BELOW
ALWAYS CALL 811
BEFORE YOU DIG
It's fast. It's free. It's the law.

PROJECT No. NCC 182 120
DRAWN BY: SRF/JLS
CHECKED BY: EWR
DATE: 8/9/17
SCALE: AS NOTED
CAD I.D.: SDP

PROJECT:
CONNECTION POINT
FOR
EASTSIDE CONNECTIONS JV, LLC
LOCATION OF SITE:
MONROE RD & LONG AVE
CHARLOTTE, NC 28212
MECKLENBURG COUNTY

BOHLER ENGINEERING, INC. PLLC
1927 S. TRYON STREET, SUITE 310
CHARLOTTE, NC 28203
Phone: (980) 272-3400
Fax: (980) 272-3401
NC@BohlerEng.com

REGISTERED PROFESSIONAL ENGINEER
No. 31128
11/28/17

SHEET TITLE:
UTILITY DETAILS
SHEET NUMBER:
C-10.1