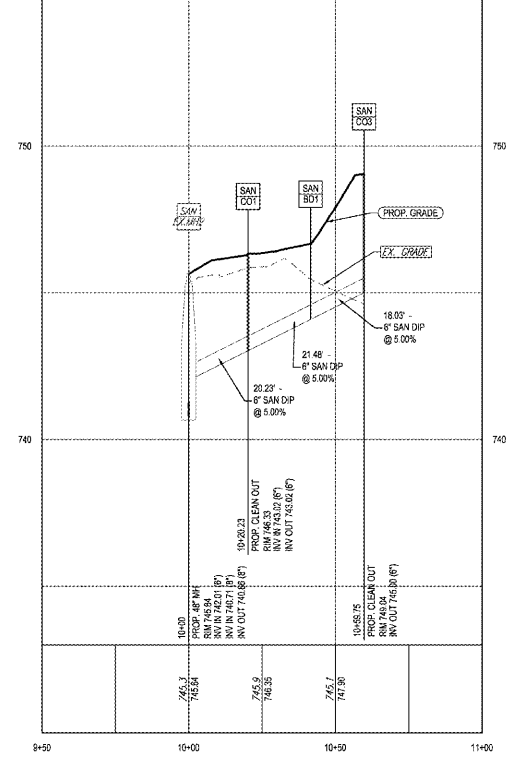
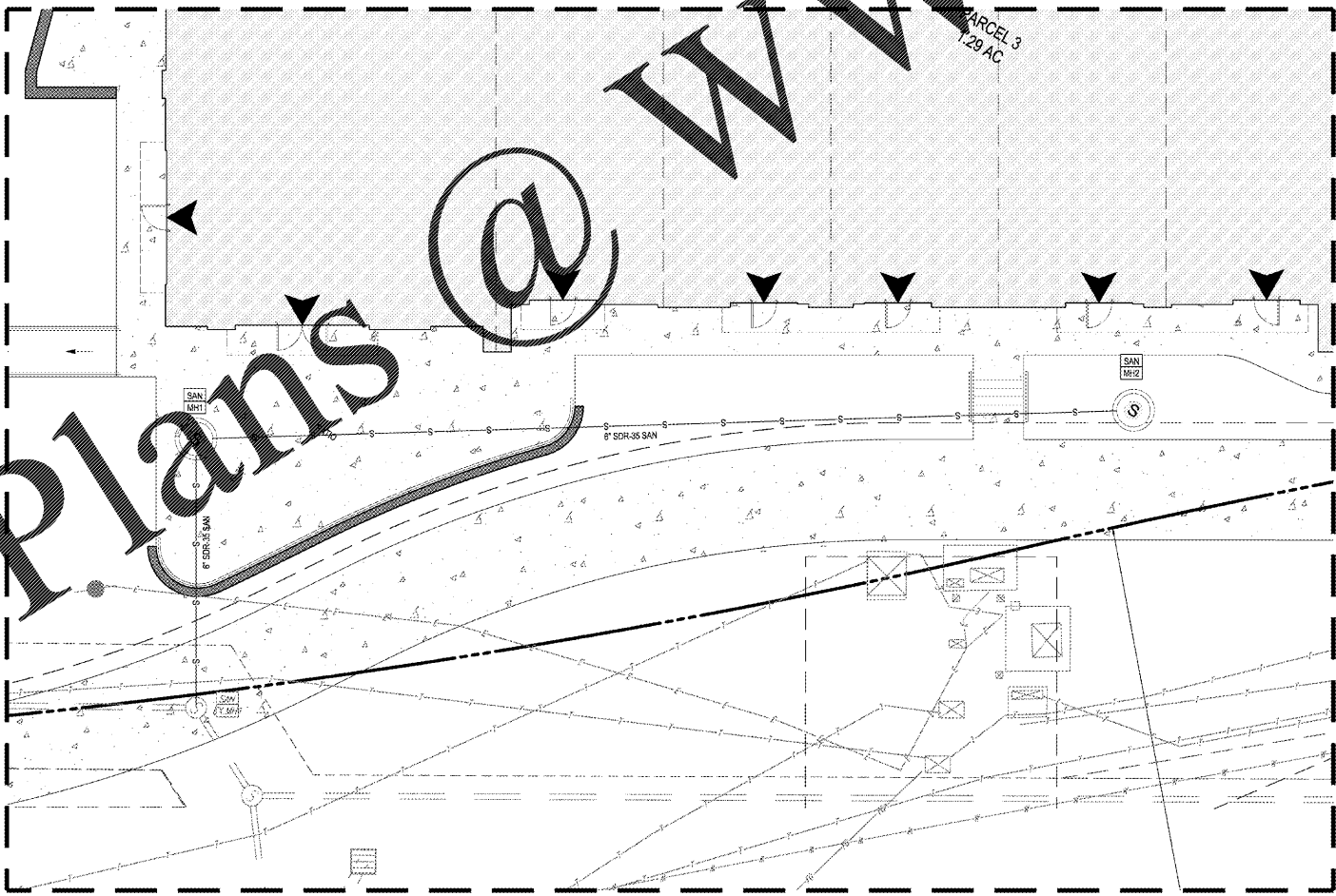
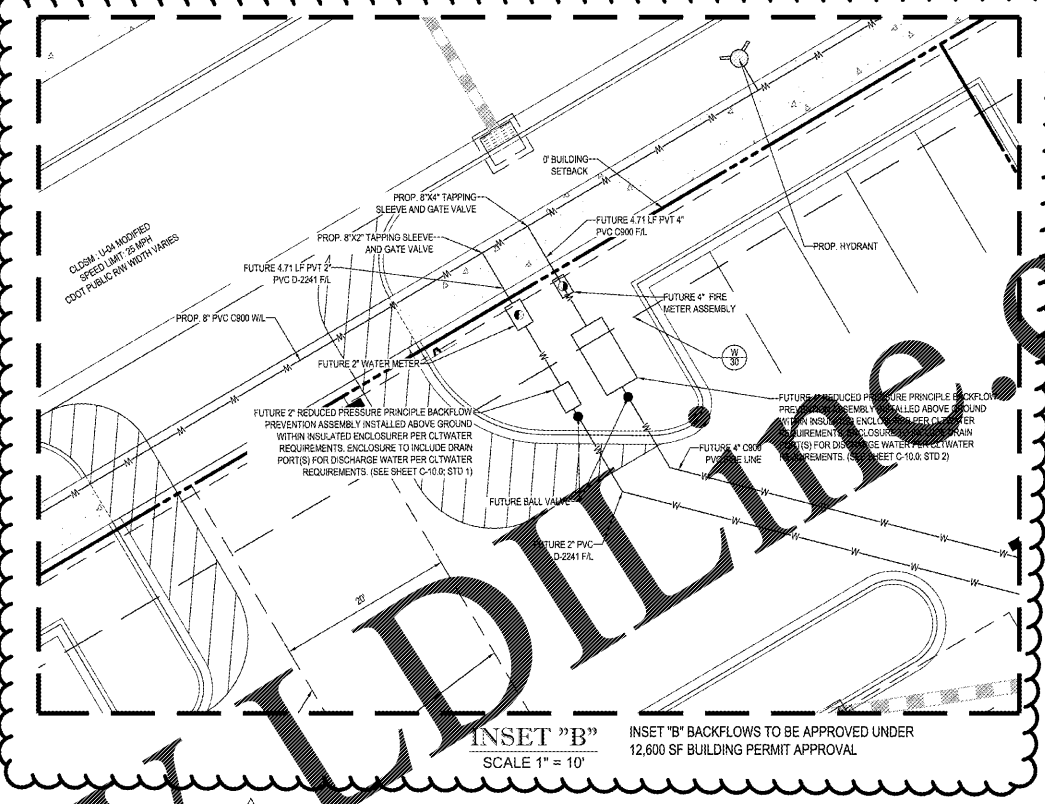
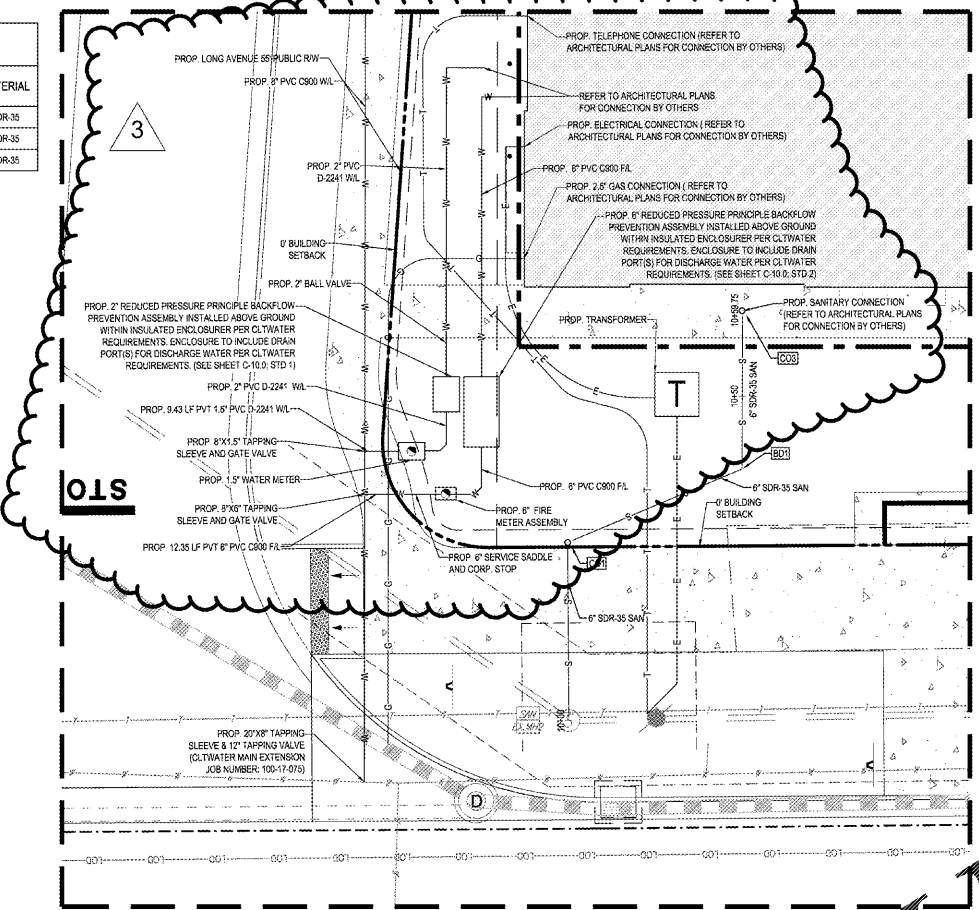
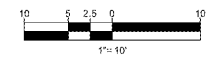


SANITARY PIPE SCHEDULE							
TO	TO INV	FROM	FROM INV	PIPE LENGTH	SLOPE (%)	DIAMETER (IN.)	MATERIAL
B01	744.10'	CO3	745.00'	18.00'	3.00%	6"	SDR-35
CO1	743.02'	B01	744.10'	21.46'	5.00%	6"	SDR-35
EX MH2	742.01'	CO1	743.02'	20.23'	5.00%	6"	SDR-35



PROPOSED EASEMENT LEGEND *	
(Symbol)	SIGHT DISTANCE
(Symbol)	STORM DRAIN
(Symbol)	SANITARY SEWER
(Symbol)	WATER
(Symbol)	PUBLIC ACCESS
(Symbol)	COMMON SHARED
(Symbol)	INGRESS-EGRESS
(Symbol)	PUBLIC UTILITY
(Symbol)	VARIABLE WIDTH S



**BOHLER ENGINEERING NO. PLLC**  
 STATE OF NORTH CAROLINA  
 REGISTERED PROFESSIONAL ENGINEER  
 NO. 31128  
 1/9/18

PROJECT: MONROE RD & LONG AVE, CHARLOTTE, NC  
 DRAWN BY: SRF/AJS  
 CHECKED BY: BWR  
 DATE: 8/17/18  
 SCALE: AS NOTED  
 CAD I.D.: UPD

REVISIONS				
REV	DATE	COMMENT	BY	
1	10/11/17	PER CITY OF CLT & NCDOT COMMENTS	SRF	
2	11/20/17	PER CITY OF CLT & NCDOT COMMENTS	SRF	
3	1/9/18	PER MECKLENBURG COUNTY COMMENTS	SRF	

**811**  
 KNOW WHAT'S BELOW  
 ALWAYS CALL 811  
 BEFORE YOU DIG  
 It's fast. It's free. It's the law.

**CONNECTION POINT**  
 FOR  
**EASTSIDE CONNECTIONS JV, LLC**  
 LOCATION OF SITE  
 MONROE RD & LONG AVE  
 CHARLOTTE, NC 28212  
 MECKLENBURG COUNTY

**BOHLER ENGINEERING NO. PLLC**  
 1927 S. TRYON STREET, SUITE 310  
 CHARLOTTE, NC 28203  
 Phone: (888) 272-3400  
 Fax: (888) 272-3401  
 NC@BohlerEng.com

**REGISTERED PROFESSIONAL ENGINEER**  
 NORTH CAROLINA  
 No. 31128  
 1/9/18

SHEET TITLE:  
**UTILITY PLAN**  
 SHEET NUMBER:  
**C-7.4**

Order Plans @ [WWW.DIEME.COM](http://WWW.DIEME.COM)