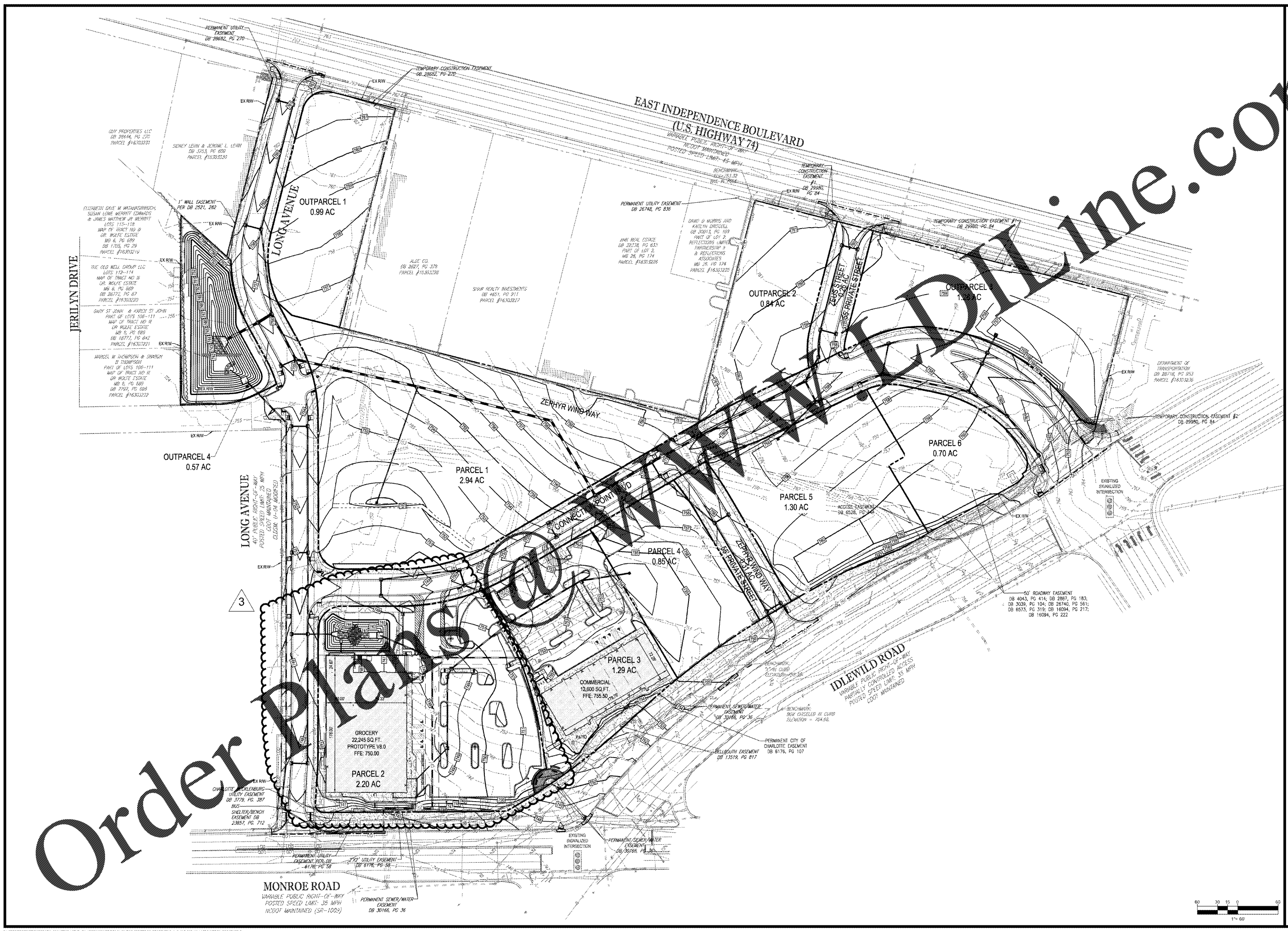


Order Plans



BOHLER ENGINEERING NO. PLLC
 1927 S. TRYON STREET, SUITE 310
 CHARLOTTE, NC 28203
 Phone: (880) 272-3400
 Fax: (880) 272-3401
 NC@BohlerEng.com

REV	DATE	COMMENT	BY
1	10/11/17	PER CITY OF CLT & NCDOT COMMENTS	SRF
2	11/28/17	PER CITY OF CLT & NCDOT COMMENTS	SRF
3	1/9/18	PER MECKLENBURG COUNTY COMMENTS	SRF

811
 KNOW WHAT'S BELOW
 ALWAYS CALL 811
 BEFORE YOU DIG
 It's fast. It's free. It's the law.

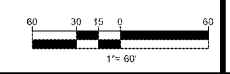
PROJECT NO.:	NCC162120
DRAWN BY:	SRF/AJS
CHECKED BY:	BWR
DATE:	08/17
SCALE:	1"=60'
CAD I.D.:	GLU

PROJECT:
CONNECTION POINT
 FOR
EASTSIDE CONNECTIONS JV, LLC
 LOCATION OF SITE
 MONROE RD & LONG AVE
 CHARLOTTE, NC 28212
 MECKLENBURG COUNTY

BOHLER ENGINEERING NO. PLLC
 1927 S. TRYON STREET, SUITE 310
 CHARLOTTE, NC 28203
 Phone: (880) 272-3400
 Fax: (880) 272-3401
 NC@BohlerEng.com



SHEET TITLE:
OVERALL GRADING PLAN
 SHEET NUMBER:
C-6.0



© 2018 BOHLER ENGINEERING NO. PLLC. ALL RIGHTS RESERVED. THIS DOCUMENT IS THE PROPERTY OF BOHLER ENGINEERING NO. PLLC. IT IS TO BE USED ONLY FOR THE PROJECT AND SITE SPECIFICALLY IDENTIFIED HEREIN. ANY REUSE OR REPRODUCTION OF THIS DOCUMENT WITHOUT THE WRITTEN PERMISSION OF BOHLER ENGINEERING NO. PLLC IS STRICTLY PROHIBITED.