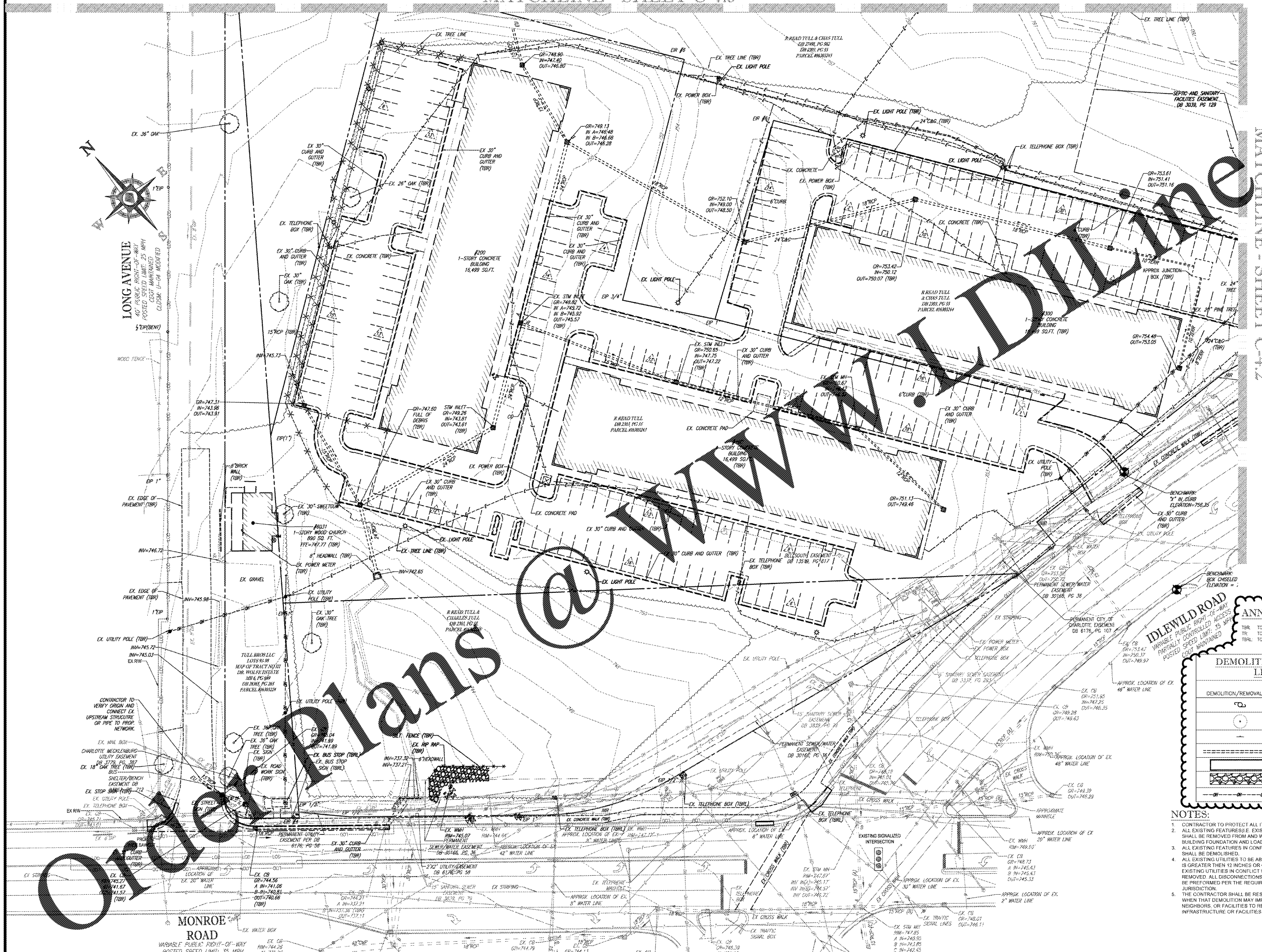
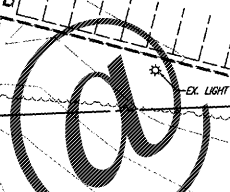




LONG AVENUE
40' PUBLIC RIGHT-OF-WAY
POSTED SPEED LIMIT: 35 MPH
CROSS-MANUAL SIGN
CLOSE TO OR ADJACENT



Order Plans @



MONROE ROAD

WASHABLE PUBLIC RIGHT-OF-WAY
POSTED SPEED LIMIT: 35 MPH
NOBODY MAINTAINED (SR-100B)

BOHLER ENGINEERING PLLC
REGISTERED PROFESSIONAL ENGINEERS
REGISTERED PROFESSIONAL ARCHITECTS
REGISTERED PROFESSIONAL SURVEYORS

REGISTERED OFFICES:
 • CHARLOTTE, NC
 • RALEIGH, NC
 • WASHINGTON, DC
 • FAYETTEVILLE, NC
 • DALLAS, TX
 • HOUSTON, TX
 • MEMPHIS, TN
 • NASHVILLE, TN
 • OKLAHOMA CITY, OK
 • TAMPA, FL
 • WASHINGTON, DC

REVISIONS

| REV | DATE | COMMENT | BY |
|-----|----------|----------------------------------|-----|
| 1 | 10/11/17 | PER CITY OF CLT & NCDOT COMMENTS | SRF |
| 2 | 11/20/17 | PER CITY OF CLT & NCDOT COMMENTS | SRF |
| 3 | 1/9/18 | PER MECKLENBURG COUNTY COMMENTS | SRF |

811
KNOW WHAT'S BELOW
ALWAYS CALL 811
BEFORE YOU DIG
It's fast. It's free. It's the law.

PROJECT NO.: NCC162100
 DRAWN BY: SRF/AJS
 CHECKED BY: BWR
 DATE: 8/5/17
 SCALE: 1"=30'
 CAD 1.D.: 550

CONNECTION POINT
FOR
EASTSIDE CONNECTIONS JV, LLC

LOCATION OF SITE
 MONROE RD & LONG AVE
 CHARLOTTE, NC 28212
 MECKLENBURG COUNTY

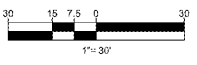
ANNOTATION LEGEND

| | |
|-----|-----------------|
| TBR | TO BE REMOVED |
| TR | TO REMAIN |
| TBL | TO BE RELOCATED |

DEMOLITION/REMOVAL LEGEND

| DEMOLITION/REMOVAL NOTE | TYPICAL NOTE TEXT |
|-------------------------|---------------------------------|
| (Symbol) | UTILITY POLE |
| (Symbol) | TREE |
| (Symbol) | SIGN |
| (Symbol) | STORM PIPE |
| (Symbol) | EXISTING STRUCTURE |
| (Symbol) | RIPRAP OR CONSTRUCTION ENTRANCE |
| (Symbol) | OVERHEAD UTILITY LINE |

- NOTES:**
- CONTRACTOR TO PROTECT ALL ITEMS TO REMAIN.
 - ALL EXISTING FEATURES (E.G. EXISTING BUILDING FOUNDATIONS, UTILITIES) SHALL BE REMOVED FROM AND WITHIN TEN (10) FEET OF THE PROPOSED BUILDING FOUNDATION AND LOADING DOCK RETAINING WALL.
 - ALL EXISTING FEATURES IN CONFLICT WITH PROPOSED IMPROVEMENTS SHALL BE DEMOLISHED.
 - ALL EXISTING UTILITIES TO BE ABANDONED SHALL BE REMOVED IF DIAMETER IS GREATER THAN 12 INCHES OR GROUTED FULL IF LEFT IN PLACE. ALL EXISTING UTILITIES IN CONFLICT WITH OTHER IMPROVEMENTS MUST BE REMOVED. ALL DISCONNECTIONS AND CAPPING OF EXISTING UTILITIES MUST BE PERFORMED PER THE REQUIREMENTS OF THE AUTHORITIES HAVING JURISDICTION.
 - THE CONTRACTOR SHALL BE RESPONSIBLE FOR ALL PHASING OF DEMOLITION WHEN THAT DEMOLITION MAY IMPACT TRAFFIC, ACCESS OR UTILITIES TO NEIGHBORS, OR FACILITIES TO REMAIN AND OTHER SURROUNDING INFRASTRUCTURE OR FACILITIES.



BOHLER ENGINEERING PLLC
 1927 S. TRYON STREET, SUITE 310
 CHARLOTTE, NC 28203
 Phone: (880) 272-3400
 Fax: (880) 272-3401
 NC@BohlerEng.com

NORTH CAROLINA REGISTERED PROFESSIONAL ENGINEER
 No. 31128
 1/9/18

EXISTING AND DEMOLITION PLAN
 SHEET NUMBER:
C-4.1